

ADUVA

R. ISTITUTO BOTANICO DI PADOVA

Sala...

Palco...

N. Inv.

BIBL. R. ORTO
BOTANICO-PADOVA

Ar,

57

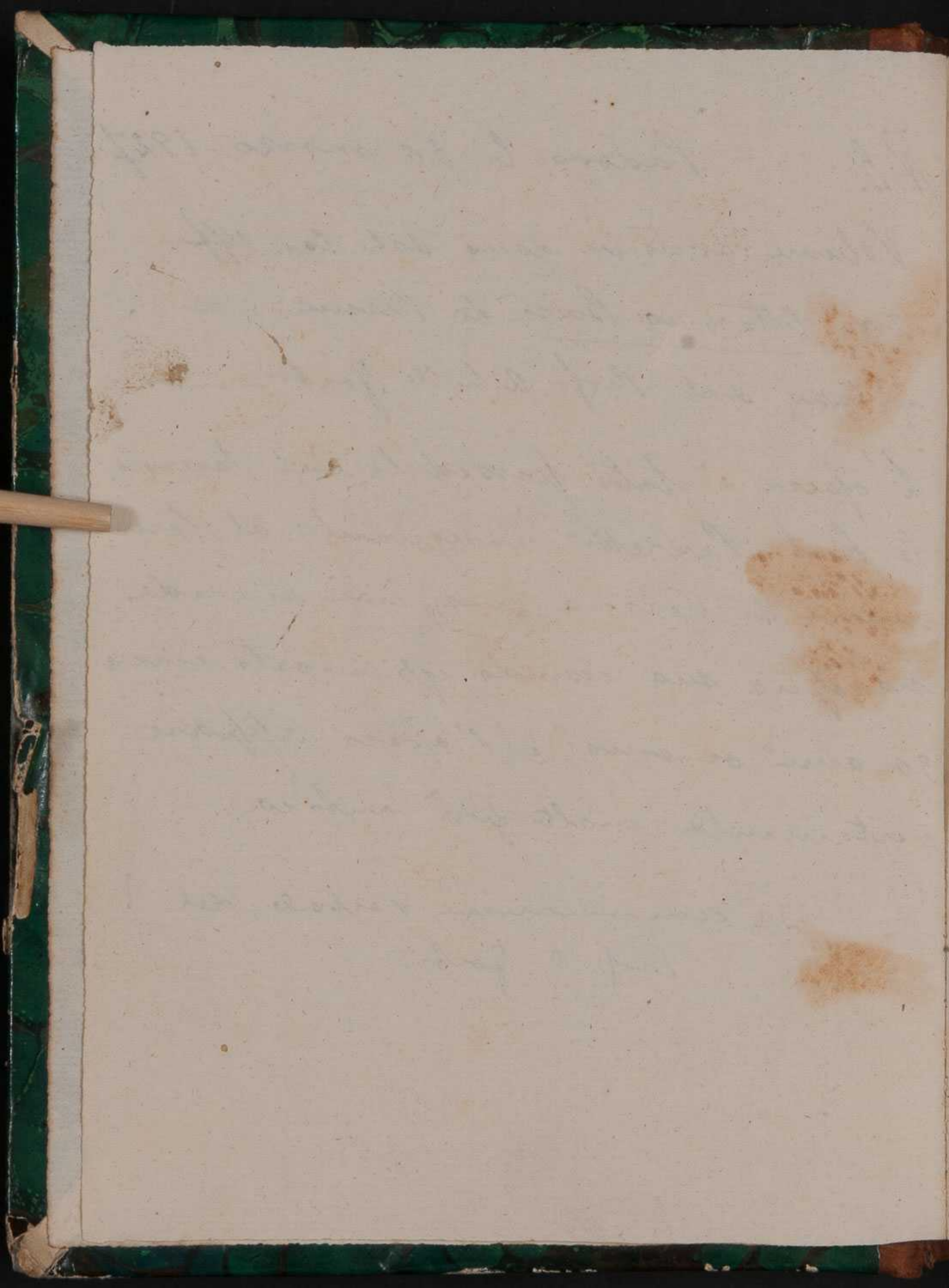
n° 1316

N.B. Padova li' 30 marzo - 1927

Volume avuto in dono dal Car. Off.
avv. Ottorino Bissi da Verona, a
mezzo dal Prof. Achille Forti —

L'opera è stata posseduta dal sacerdote
te Prof. Pedretti, insegnante al Semi-
nario di Verona, ma non si crede
sia opera sua, essendo egli morto circa
30 anni or sono, e l'opera appare
certamente molto più antica.

(Da comunicazione verbale del
Prof. A. Forti.)



[Faint handwritten text, likely bleed-through from the reverse side of the page. Some words are partially legible in red ink.]

[Faint handwritten text, likely bleed-through from the reverse side of the page. The text is mostly illegible due to fading.]

[Faint, illegible handwriting in two columns]



A

<i>Acanthus Mollis</i>	— — — — —	9
<i>Achillea Millefolium</i>	— — — — —	10
<i>Acinos Caryophyllatum</i>	— — — — —	13
<i>Aconitum Lycoctonum</i>	— — — — —	1
<i>Aconitum Napellus</i>	— — — — —	1
<i>Acianthum Tenerum</i>	— — — — —	3
<i>Aconis Aestivalis</i>	— — — — —	11
<i>Agrimonia Eupatoria</i>	— — — — —	26
<i>Agrostema Githago</i>	— — — — —	8
<i>Agrostis Vulgaris</i>	— — — — —	2
<i>Aira Caryophylla</i>	— — — — —	5
<i>Alisma auricula ursi</i>	— — — — —	12
<i>Alisma Primula veris</i>	— — — — —	11
<i>Alisma Sylv. et Prat.</i>	— — — — —	12
<i>Alsine Media</i>	— — — — —	20
<i>Alsine Minor</i>	— — — — —	14
<i>Alopecurus Pratensis</i>	— — — — —	5
<i>Alopecurus Geniculatus</i>	— — — — —	3
<i>Alyssum Sideritis Heraclea</i>	— — — — —	14
<i>Alyssum flosculis caulinis</i>	— — — — —	13
<i>Anchusa Officinalis</i>	— — — — —	18
<i>Anemone Hepatica</i>	— — — — —	24
<i>Anemone nemorosa</i>	— — — — —	24
<i>Anemone Pulsatilla</i>	— — — — —	11
<i>Antirrhinum Cimbale</i>	— — — — —	21
<i>Antirrhinum Majus</i>	— — — — —	22
<i>Antoxanthum Dorat.</i>	— — — — —	20
<i>Aquilegia Sylvestris</i>	— — — — —	15
<i>Aquilegia Vulgaris</i>	— — — — —	23

A.

<i>Arbutus Uredo</i>	— — — — —	19
<i>Arabis Caeulea</i>	— — — — —	7
<i>Aristolochia Clematis</i>	— — — — —	7
<i>Arnica glauca</i>	— — — — —	7
<i>Aronicum Plusii</i>	— — — — —	8
<i>Arum Maculatum</i>	— — — — —	4
<i>Arundo Phragmites</i>	— — — — —	6
<i>Asperugo Procumbens</i>	— — — — —	18
<i>Aster Amellus</i>	— — — — —	17
<i>Astragalus</i>	— — — — —	16
<i>Avena Sativa</i>	— — — — —	25
<i>Avena Strigosa</i>	— — — — —	25

B

<i>Ballota Nigra</i>	— — — — —	29
<i>Balsamina noli-tangere</i>	92.28	
<i>Betonica Offic.</i>	— — — — —	29
<i>Berberis Vulgaris</i>	— — — — —	27
<i>Borrago Offic.</i>	— — — — —	27
<i>Blitum Capitatum</i>	— — — — —	31
<i>Brassica Oleracea Cap.</i>	— — — — —	33
<i>Brassica Olerac. Sab.</i>	— — — — —	34
<i>Briza Media</i>	— — — — —	32
<i>Buglossa</i>	— — — — —	73
<i>Bughtalmum Salic.</i>	— — — — —	32
<i>Butomus Umbellatus</i>	— — — — —	30
<i>Buxus sempervirens</i>	— — — — —	31

C.

<i>Pacalia Sagittata</i>	65
<i>Callitriche verna</i>	35
<i>Camedrio</i>	185
<i>Calluna Vulgaris</i>	63
<i>Caltha Palustris</i>	37
<i>Camelina Sativa</i>	36
<i>Campanula Alpina</i>	41
<i>Campanula Barbata</i>	42
<i>Campanula Excisa</i>	42
<i>Campanula Morettiana</i>	42
<i>Campanula Penisia</i>	41
<i>Campanula Rotundifolia</i>	44
<i>Campanula Scheutzerü</i>	43
<i>Campanula Spicata</i>	44
<i>Campanula Trachelio</i>	39
<i>Campanula Thyrsoides</i>	44
<i>Campanula Loysü</i>	41
<i>Cardamina Pratensis</i>	54.49
<i>Carex Arenaria</i>	35
<i>Carex Paspitosa</i>	47
<i>Carduus crispus</i>	53
<i>Carlina Acaulis</i>	50
<i>Pentaurea Nigricans</i>	47
<i>Pentaurea Cyanus</i>	36
<i>Cerastium Avenae</i>	46
<i>Cerintho Major</i>	37
<i>Chama Vulgaris</i>	49
<i>Chenopodium bon. Enricus</i>	46
<i>Chelidonium Majus.</i>	45

C

<i>Chondrilla Avenensis</i>	52
<i>Chondrilla rad. tuberosa</i>	52
<i>Ciuta Officinalis</i>	51
<i>Cirsecum Acaule</i>	50
<i>Clematis Vitalba</i>	45
<i>Clinopodium Vulgare</i>	51
<i>Clymenum vel Caltha</i>	52
<i>Colchicum Autumnale</i>	48
<i>Conium Maculatum</i>	51
<i>Corydalis Bulbosa</i>	76
<i>Consolida Minor</i>	187
<i>Crocus Sativus</i>	48
<i>Crocus Vernus</i>	48
<i>Cochlearia Officinalis</i>	49
<i>Cucubalus Behem</i>	40
<i>Cuscuta Europaea</i>	113
<i>Cyclamen Europaeum</i>	40
<i>Cynoglossum Officinale</i>	38
<i>Cyperus Fuscus</i>	46

D

<i>Datura Stramonium</i>	60
<i>Dianthus Alpinus</i>	58
<i>Dianthus Carthusianorum</i>	56
<i>Dianthus Monspeulanus</i>	58
<i>Dianthus Sylvestris</i>	58
<i>Dactylis Glomerata</i>	56
<i>Ditamus Albus</i>	62
<i>Digitalis Purpurea</i>	55

D.

<i>Dipsacus Sylvestris</i>	— — — 61
<i>Delphinium Consolida</i>	— — 57
<i>Doronicum Australe.</i>	— 59
<i>Doronicum Cordifolium</i>	— 59
<i>Draba Aizooides</i>	— — — 60
<i>Draba Verna</i>	— — — 58
<i>Drosera Rotundifolia</i>	— — 60
<i>Dryas Octopetala</i>	— — 62

E

<i>Echium Vulgare</i>	— — — 73
<i>Emilia Flammea</i>	— — 65
<i>Epilobium Angustifolium</i>	— 68
<i>Epilobium Dodonaei</i>	— — 67
<i>Epipactis nidus-avis</i>	— — 65
<i>Epipactis Latifolia</i>	— — 71
<i>Equisetum Arvense</i>	— — 72
<i>Equisetum Fluviale</i>	— 72
<i>Equisetum Vulgare</i>	— — 72
<i>Erica Vulgaris</i>	— — — 63
<i>Erica (alia)</i>	— — 70
<i>Erigeron Aere</i>	— — — 63
<i>Eringium Amethystin.</i>	— 67
<i>Eriophorum Angustif.</i>	— 66
<i>Eriophorum Latifolium</i>	— 64
<i>Euphrasia Officinalis</i>	— 64
<i>Erysimum Cheiranthoi.</i>	— 68
<i>Eupatorium Cannabin.</i>	— — 74

E

<i>Euphorbia Cyparissias</i>	— — — 69
<i>Euphorbia Esula</i>	— — — 68
<i>Erytraea Centaurium</i>	— — — 67
<i>Evonimus Europaeus</i>	— — — 66

F

<i>Filices varia</i>	— — — — 80
<i>Festuca</i>	— — — — 78
<i>Floemide Fruticosa</i>	— — — 77
<i>Fritillaria Imperial.</i>	— — — 79
<i>Fumaria Bulbosa</i>	— — — 76
<i>Fumaria Offic.</i>	— — — — 75

F

<i>Gagea Pratensis</i>	— — — 135
<i>Gentiana Major</i>	— — — 84
<i>Gentiana (alia)</i>	— — — 86
<i>Geranium Pratense</i>	— — — 83
<i>Glicera Fluitans</i>	— — — 78
<i>Gnaphalium Dioicum</i>	— — — 82
<i>Gnaphalium Leontop.</i>	— — — 82
<i>Gonfrena Globosa</i>	— — — 86
<i>Gratiola Officinalis</i>	— — — 81

H

<i>Hedisarum Onobrychis</i>	— — — 90
<i>Helianthemum Vulg.</i>	— — — 87
<i>Hieracium Pelosella</i>	— — — 89

H

<i>Hieracoides Picris</i>	- - -	89
<i>Holcus Lanatus</i>	- - -	90
<i>Hottonia Palustris</i>	- - -	87
<i>Humulus Lupulus</i>	- - -	87
<i>Hydrocaride morsus-ranae</i>	- - -	93
<i>Hypericum Perfoliatum</i>	- - -	89
<i>Hyosciamus Niger</i>	- - -	88

I

<i>Iberis Nudicaulis</i>	- - -	95
<i>Ilex Aquifolium</i>	- - -	95
<i>Impatiens noli-tangere</i>	- - -	92
<i>Indigofera</i>	- - -	94
<i>Inula Dissenterica</i>	- - -	91
<i>Iris Florentina</i>	- - -	93
<i>Iris Pseudacorus</i>	- - -	96
<i>Isatis Tinctoria</i>	- - -	96
<i>Isopirum</i>	- - -	15

J

<i>Juniperus Communis</i>	- - -	85
<i>Jasminum Offic.</i>	- - -	98
<i>Juncus Articulatus</i>	- - -	97
<i>Juncus Conglomeratus</i>	- - -	98
<i>Juncus Effusus</i>	- - -	97

L

<i>Lathrda Squamaria</i>	- - -	104
<i>Lathyrus Tuberosus</i>	- - -	102

L

<i>Lamium Album</i>	- - -	106
<i>Lemna Minor</i>	- - -	104
<i>Leontodon Autumn.</i>	- - -	101
<i>Leontodon Taraxac.</i>	- - -	109
<i>Leonurus Cardiaea</i>	- - -	105
<i>Leucogon Vernum</i>	- - -	112
<i>Lilium Bulbiferum</i>	- - -	111
<i>Lilium Martagon</i>	- - -	112
<i>Linaria Oxyris</i>	- - -	108
<i>Linaria Vulgaris</i>	- - -	108
<i>Linum Tenuifolium</i>	- - -	108
<i>Lithospermum Arv.</i>	- - -	103
<i>Lithrum Virgatum</i>	- - -	165
<i>Lobelia Siphilitida</i>	- - -	99
<i>Lolium Perenne</i>	- - -	108
<i>Lolium Temulentum</i>	- - -	100
<i>Lotus Corniculatus</i>	- - -	100
<i>Lycnis Flavauculi</i>	- - -	110
<i>Lycopsis Arvensis</i>	- - -	103
<i>Lycopus Europaeus</i>	- - -	104
<i>Lysimachia Vulg.</i>	- - -	100
<i>Lunaria Annua</i>	- - -	107
<i>Lupinus Albus Luteus</i>	- - -	105

M

<i>Malva Alcea</i>	- - -	118
<i>Marsillea Quadrifolia</i>	- - -	117
<i>Marrubium Vulg.</i>	- - -	115
<i>Martellina Sylvest.</i>	- - -	117

M

<i>Medicago Lupulina</i> — — — 119
<i>Medicago Sativa</i> — — — 113
<i>Matricaria Camomilla</i> — — — 122
<i>Melampyrum Arvense</i> — — — 121
<i>Melilotus Officinalis</i> — — — 120
<i>Melissa Officinalis</i> — — — 121
<i>Mentha Crispa</i> — — — 114
<i>Mentha Piperita</i> — — — 114
<i>Miosotis</i>
<i>Monotropa Hypopithys</i> — — — 116
<i>Montia Fontana</i> — — — 116
<i>Mulgedium Alpinum</i> — — — 117

N

<i>Narcissus Poeticus</i> — — — 123
<i>Narcissus Pseudonarcis.</i> — — — 123
<i>Nardus Stricta</i> — — — 124
<i>Nasturtium Offic.</i> — — — 124
<i>Ninfea Alba</i> — — — 125
<i>Ninfea Luteo-Cerulea</i> — — — 126

O

<i>Ocinum Caviophyllatum</i> — — — 13
<i>Oenothera Biennis</i> — — — 128
<i>Orobrychis Sativa</i> — — — 135
<i>Ononis Spinosa</i> — — — 133
<i>Oenopordon Ananthium</i> — — — 127
<i>Ophrys Apifera</i> — — — 131
<i>Ophrys Speculum</i> — — — 131

O

<i>Ophrys nidus-avis</i> — — — 65
<i>Orchis Calceolus</i> — — — 132
<i>Orchis Conopsea</i> — — — 130
<i>Orchis Latifolia</i> — — — 129
<i>Orchis Militaris</i> — — — 129
<i>Orchis Morio</i> — — — 132
<i>Orchis Myoides</i> — — — 130
<i>Orchis Pyramidalis</i> — — — 132
<i>Orchis Ustulata</i> — — — 130
<i>Ornithogalum Luteum</i> — — — 135
<i>Orobanche Caryophylla</i> — — — 136
<i>Oxalis Sylvatica</i> — — — 16
<i>Oxalis Acetosella</i> — — — 134
<i>Oxalis Cornuta</i> — — — 133
<i>Oxalis Violacea</i> — — — 134
<i>Osmunda Regalis</i> — — — 133

P

<i>Panicum Viride</i> — — — 143
<i>Papaver Rhoeas</i> — — — 146
<i>Parnassia Palustris</i> — — — 140
<i>Pervina</i> — — — 137
<i>Pisum Arvense</i> — — — 145
<i>Pisum aliud arvense</i> — — — 146
<i>Pinguicula Vulgaris</i> — — — 144
<i>Plantago Aquatica</i> — — — 139
<i>Plantago Major</i> — — — 139
<i>Plantago Minor</i> — — — 140
<i>Poligala Amara</i> — — — 147. 138

P

<i>Polygonum Chamæbuxus</i> - - -	147
<i>Polygonum Vulgaris</i> - - -	141
<i>Polygonum Fagopyrium</i> - - -	138
<i>Polygonum Orientale</i> - - -	137
<i>Polygonum Rumex</i> - - -	138
<i>Portulaca Oleracea</i> - - -	144
<i>Potentilla Anserina</i> - - -	138
<i>Prunella Grandiflora</i> - - -	148
<i>Prunella Vulgaris</i> - - -	148
<i>Pulmonaria Angustif.</i> - - -	142
<i>Pulsatilla Vulgaris</i> - - -	146
<i>Pyrola Rotundif.</i> - - -	141

Q

<i>Quercus</i> - - - - -	185
--------------------------	-----

R

<i>Ranunculus Acris</i> - - -	155
<i>Ranunculus Lanclat.</i> - - -	154
<i>Ranunculus Montan.</i> - - -	149
<i>Ranunculus Scelleratus</i> - - -	153
<i>Ruscus Lutea</i> - - -	149
<i>Rhinanthus Major</i> - - -	152
<i>Ribes Grossularia</i> - - -	156
<i>Rosa Canina</i> - - -	150
<i>Rubus Fruticosus</i> - - -	151
<i>Ruscus Sulcatus</i> - - -	153
<i>Ruta Graveolens</i> - - -	153
<i>Ryteuma Spiata</i> - - -	152

S

<i>Salicaria</i> - - - - -	165
<i>Salvia Pratensis</i> - - -	162
<i>Sambucus Nigra</i> - - -	157
<i>Satureja Arvensis</i> - - -	172
<i>Saxifraga Granulata</i> - - -	162
<i>Scabiosa folio-integro</i> - - -	166
<i>Schoenus Albus</i> - - -	167
<i>Scirpus Maritimus</i> - - -	161
<i>Scutellaria Alpina</i> - - -	165
<i>Scutellaria Galericulata</i> - - -	173
<i>Secum Aere</i> - - -	167
<i>Scymnus aliqua</i> - - -	163
<i>Secum Montanum</i> - - -	164
<i>Senecio Vulgaris</i> - - -	165
<i>Serapias Rubra</i> - - -	167
<i>Sherardia Arvensis</i> - - -	166
<i>Silene nutans</i> - - -	169
<i>Simphytum Offic.</i> - - -	168
<i>Sisymbrium Offic.</i> - - -	174
<i>Solanum Dulcamara</i> - - -	170
<i>Solanum Malvacabum</i> - - -	169
<i>Solanum Nigrum</i> - - -	169
<i>Spartium Scoparium</i> - - -	171
<i>Stachys Palustris</i> - - -	174
<i>Stachys Sylvatica</i> - - -	173
<i>Symphoricarpos Ruscifera</i> - - -	169
<i>Statice Armeria</i> - - -	158
<i>Saponaria</i> - - - - -	159
<i>Tanacetum Vulgare</i> - - -	188
<i>Teucrium Chamædrys</i> - - -	185
<i>Teucrium Chamægrithys</i> - - -	185

T

Teucrium Marum - - - 186
Thlaspi bursa pastoris - - 176
Thymus Consoleida - - - 187
Thymus Serpyllium - - - 187
Trifolium Pratense - - - 175
Trifolium Repens - - - 176
Tragium aut Tragopogon - 177
Tragopogon Pratense - - 187
Trapa satans - - - - 188
Tritium Repens - - - 178
Tulipa Sylvestris - - - 188
Turritis Glabra - - - - 186
Typha Angustifolia - - 178

Triticum

1.3. *T. muticum rufum glabrum* 179
 2. *T. vulg. aristatum nigrum* "
 4. *T. vulg. arist. rubrum* "
 5. *T. V. album glabrum seminibus albidis.* - - - - "
 6. *T. V. arist. fuscum glabrum* - "
 7. *T. V. arist. rufum velutin.* - "
 8. *T. V. spica laxa aristatata caerulecente glabra.* - - - "
 9. *T. muticum rufum glabr.* - 180
 10. 11. *T. muticum velutinum* - "
 12. 13. *T. V. muticum album* - "
 glabrum seminibus aureis. - "
 14. 15. *T. V. muticum album velutinum.* - - - - "

T

16. *Trit. compactum muticum* 180
 17. *T. V. erinaceum hibern.* - 181
 18. *T. V. erinac. aetivum* - - "
 19. *T. turgidum album velut.* - "
 20. *T. turgidum violaceum velutinum.* - - - - "
 21. *T. durum album glabrum* - "
 22. *T. turgidum compositum album glabrum.* - - - - "
 23. *T. durum compactum albidum velutin. aristis albidis.* - "
 24. *T. Polonicum vulgare* - 182
 25. *T. Spelta spica mutica alba glabra.* - - - - - "
 26. *T. Spelta spica aristata rufa* "
 27. *T. amygdum spica alba glabra ramosa.* - - - - - "
 28. *T. amygdum semicanum villosum* - - - - - "
 29. *T. Secale cereale.* - - - 183
 30. *T. hordeum vulg. spica flavescente.* - - - - - "
 31. *T. hordeum exastichon spica longa.* - - - - - "
 32. *T. hordeum distichon nudum.* "
 33. *T. hordeum Leoriton.* - - - "

U.

<i>Urtica Latifolia</i>	- - -	189
<i>Urtica Labeo</i>	- - -	190
<i>Urtica Vulgaris</i>	- - -	
<i>Utricularia Vulgaris</i>	- - -	189
V.		
<i>Valeriana Officinalis</i>	- - -	195
<i>Verbascum Thapsus</i>	- - -	199
<i>Veronica Anagallis caerulea</i>		198
<i>Veronica Anagallis rubra</i>		192
<i>Veronica Officinalis</i>	- - -	191
<i>Veronica Fruticulosa</i>	- - -	191
<i>Veronica Saxatilis</i>	- - -	196
<i>Veronica Triphyllus</i>	- - -	194
<i>Veronica s.</i>	- - -	192
<i>Viburnum Opulus</i>	- - -	199
<i>Vicia Faba</i>	- - -	194
<i>Vicia Lepium</i>	- - -	193
<i>Vicia Sativa</i>	- - -	192
<i>Vicia V Peruviana</i>	- - -	137
<i>Visum Album</i>	- - -	198
<i>Vitex</i>	- - -	200
<i>Verbena Offic.</i>	- - -	197



Quercus bicolor
Common, rich soil, mountains



Quercus agrifolia. - Mountain slopes, common
at night, yellow

[Faint, illegible handwritten text, likely bleed-through from the reverse side of the page.]

[Faint, illegible handwritten text, likely bleed-through from the reverse side of the page.]





Aconitum Lycocitronum
V. Pelucaria, piè de l'ovo, trizagine



Aconito napello. Aconitum Napellus (Ranunculaceae)
V. Napel, Napel



Agrostis vulgaris o *capillaris*. Agrostide comune
(Graminacee)



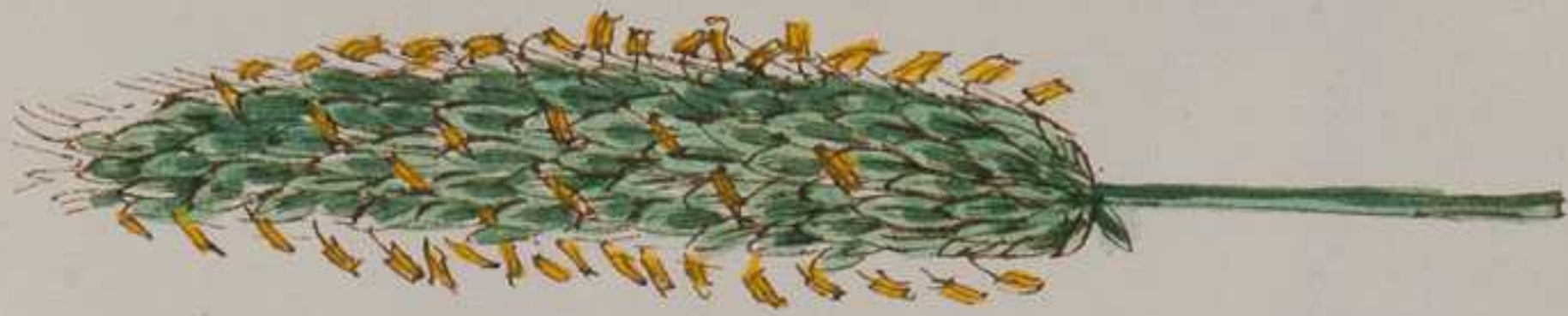
1/2

Alopecurus geniculatus
 V. Codino aquatico, Strozza ranocchie.

Sciantum tenerum



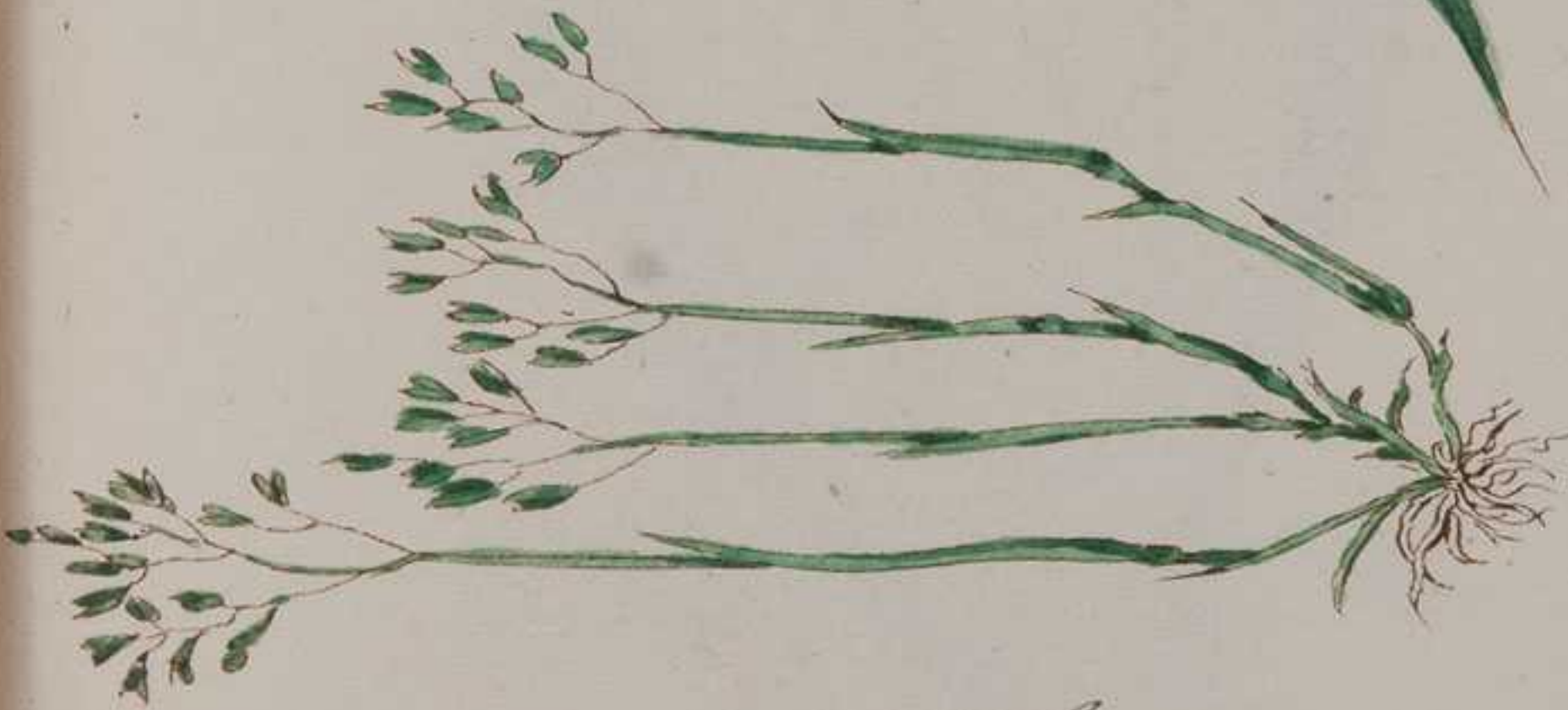
V. Aro Maculato. Volg. Gichero
Arum Maculatum



Alopecurus pratensis



Aira Caryophylla



germ.



Arunco
V. Scoble

Phragmites



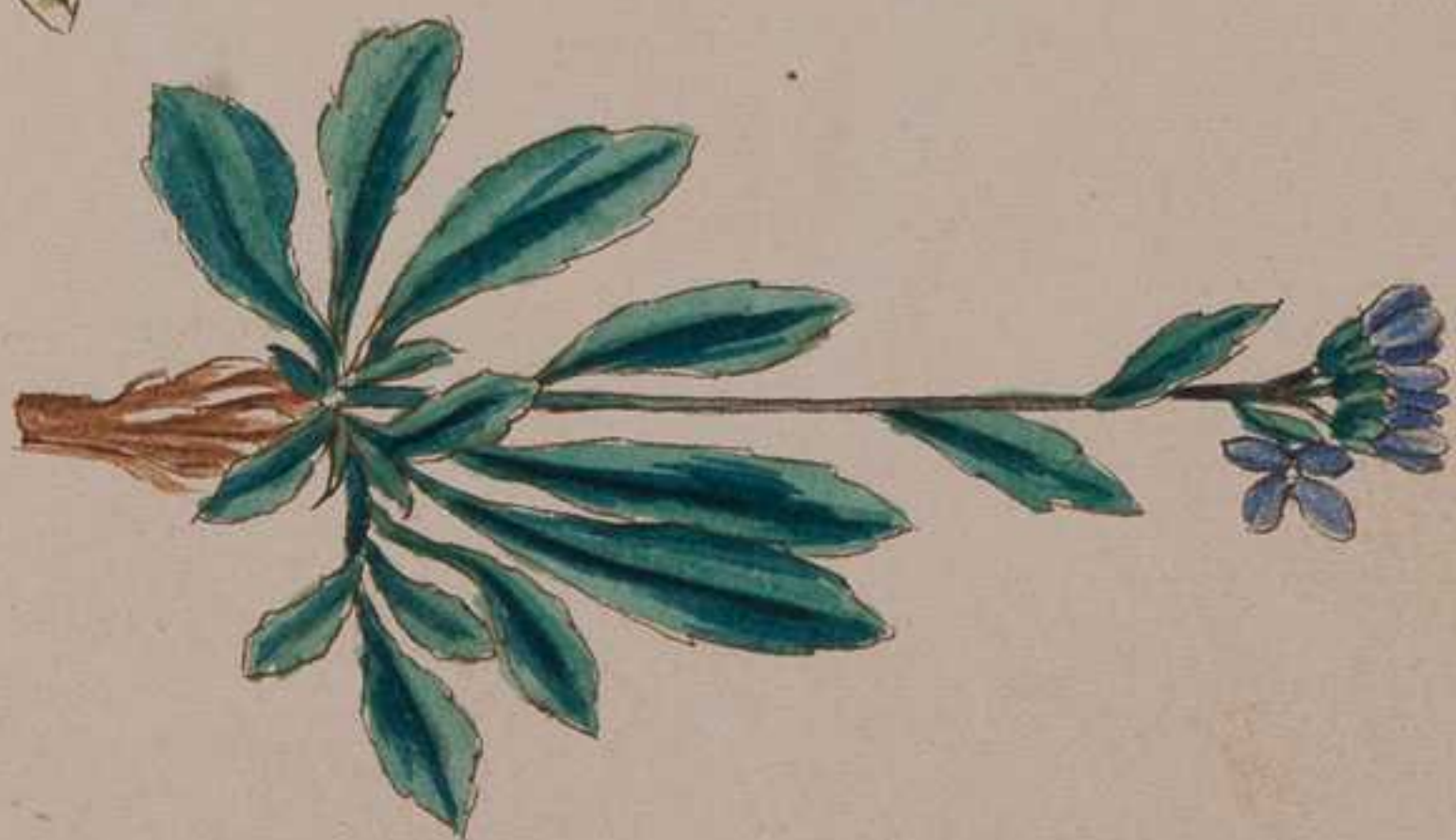
Arnica

Glacialis



Aristolochia Clematites

Sphacelium curvum





Arenicum Clusii



Agrostema Lithago
Gettone. Voludini



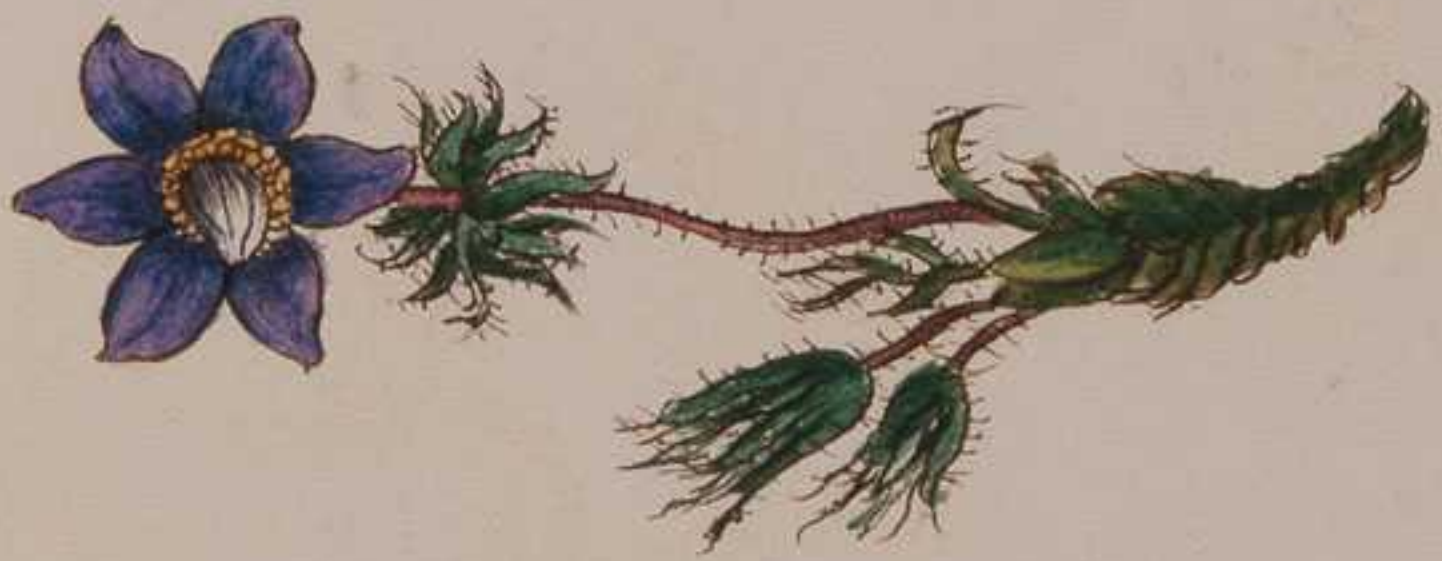
Acanthus mollis

(Dicot. Scartaceae)

Volg. Branca Orsina



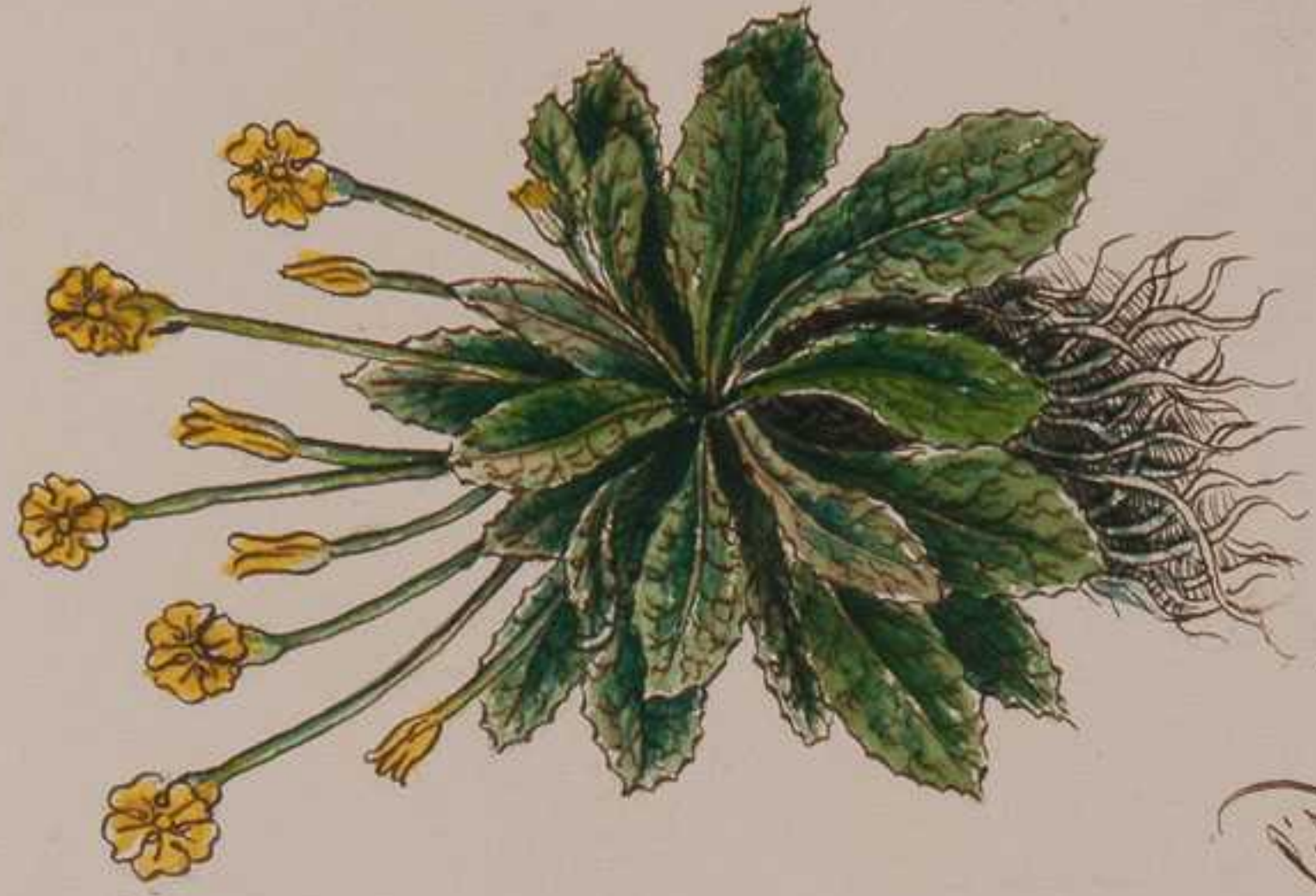
Achillea millefolium. *Achillea Millefolium*



Anemone Pulsatilla



(*Adonis vernalis*)



Primula Veris



Alisma. Auricula ursi



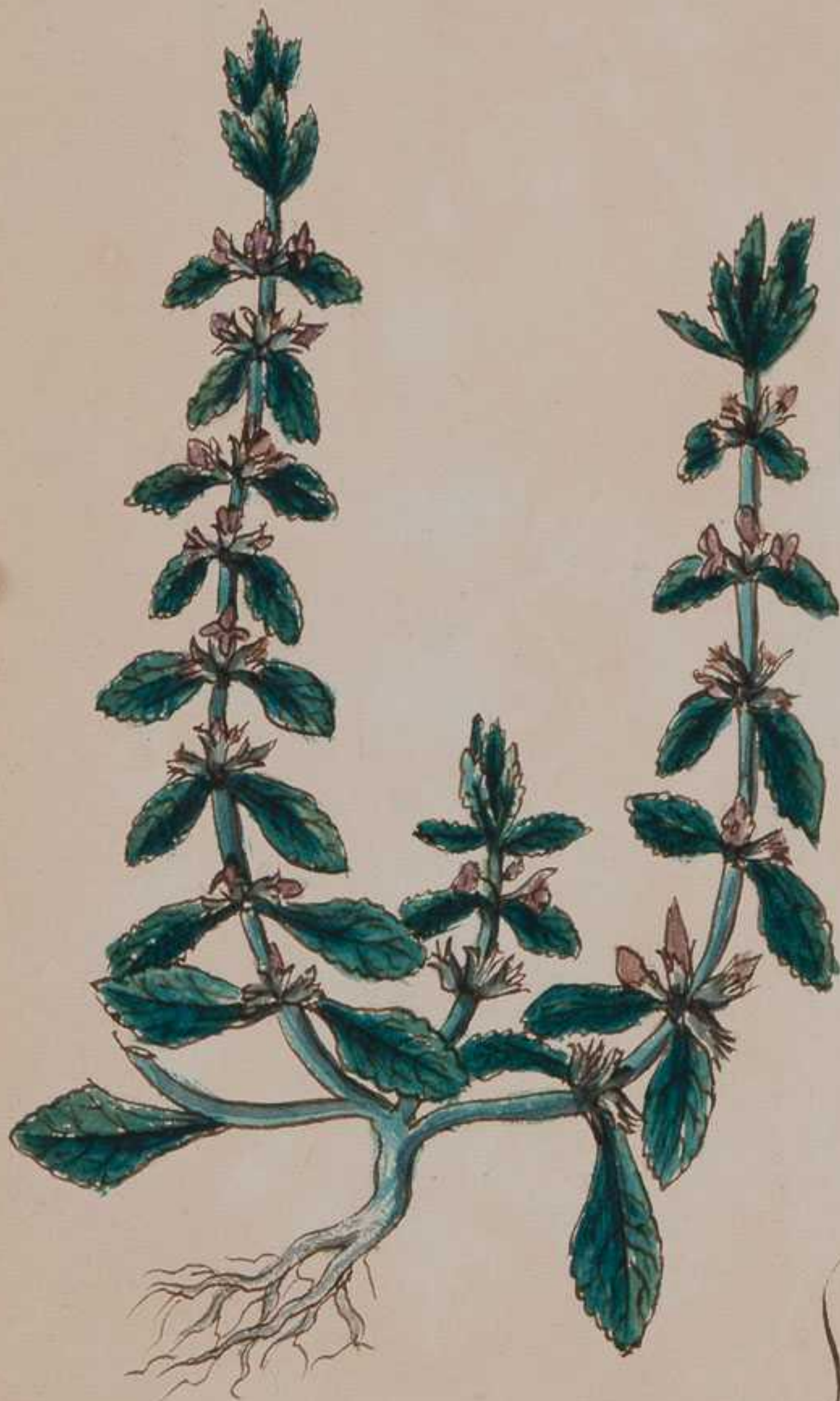
*Alisma Sylv. et
pratense*



*Scimus. Cimium Caryophyllatum
monachorum.*

Natiella

*Alissum.
Veronica flosculis cauliculis
adhaerentibus.*



Thysanum Sievertis Heraclia
Marrubiastum flos candidante

Alsine Minor

Nasci sui muri, postea dicitur odor de cucurbitis.



Aquilegia Sylvestris . Tropyrum



Astragalus, Crubus sylvaticus



Aster Amellus



Achusa Officinalis

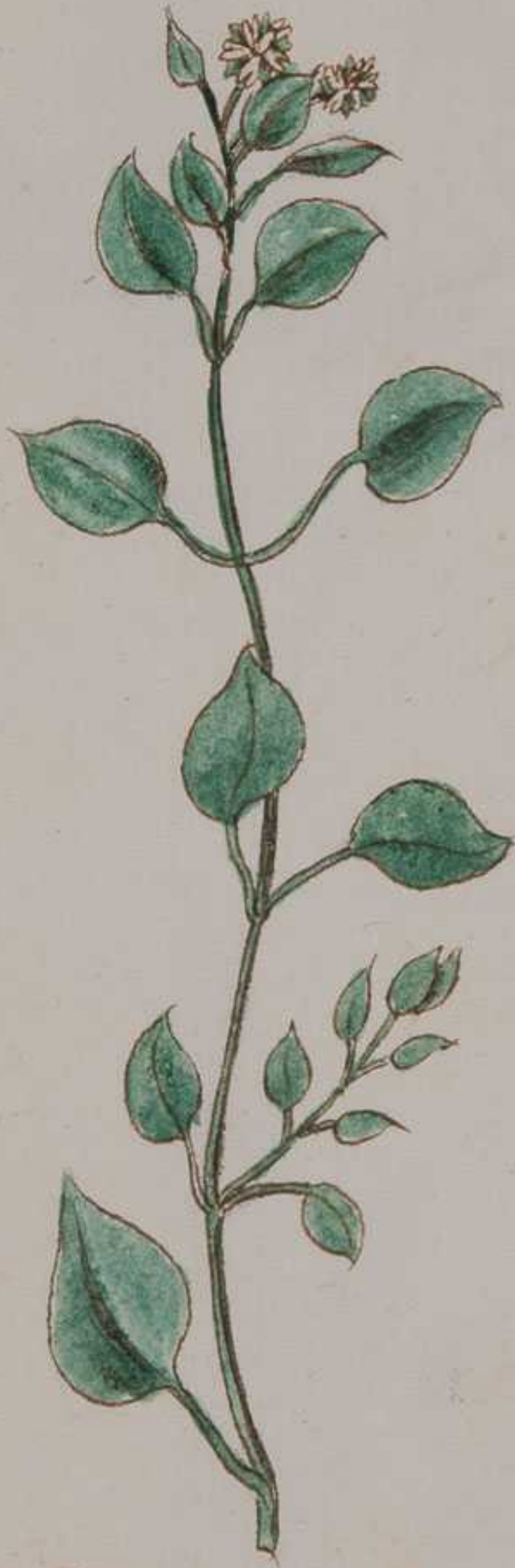


Asperugo

Procumbens



Arbutus Unedo 9^o Fraghe di montagna



Alsine Media
V. Pavarina

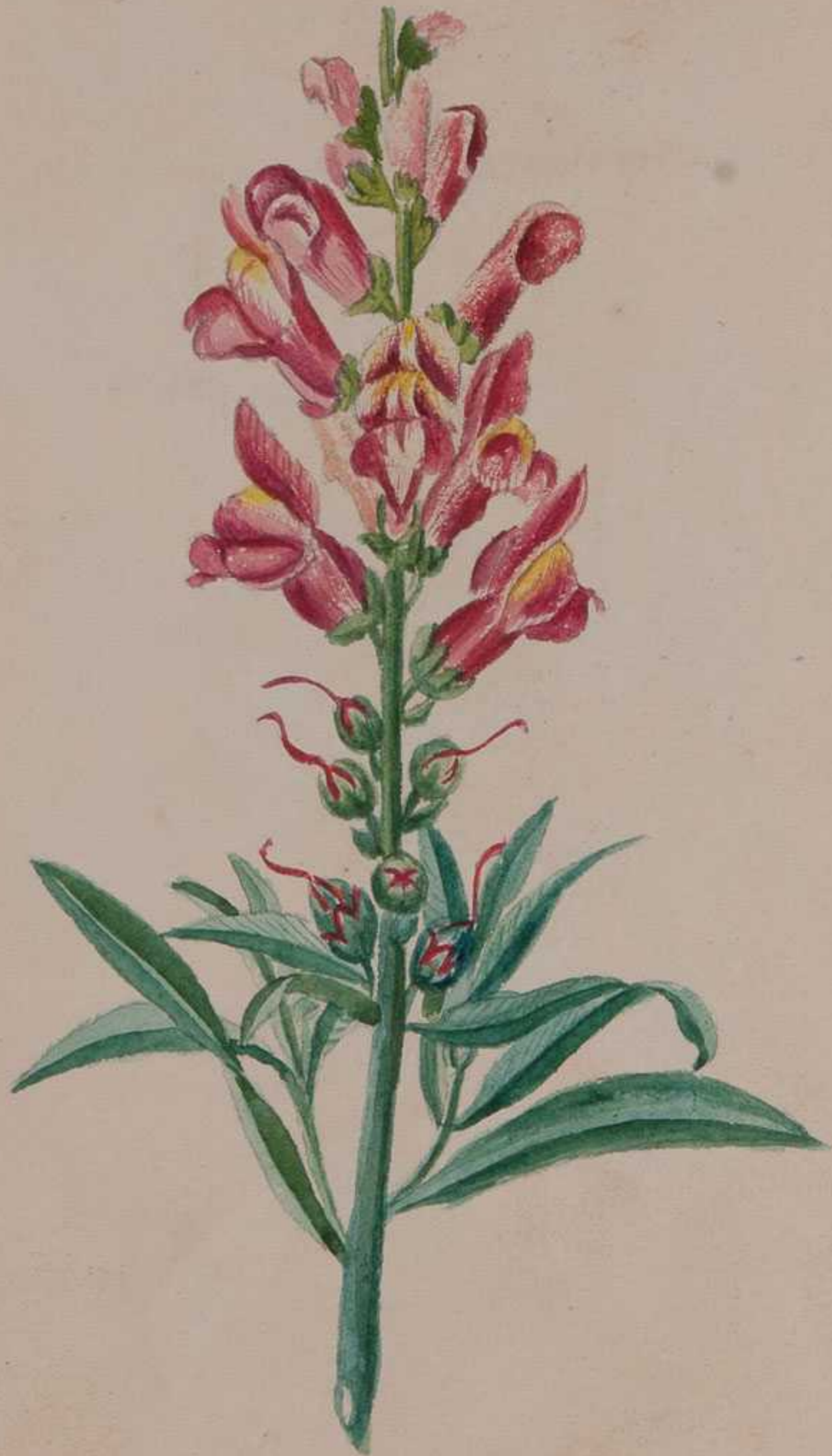


Anthoxanthum Odoratum



Antirrhinum
Anserina 0

Pimballaria



Antirrhino Mag.
V. Draghi

Bocche di Drago
V. Bocca di Leon



Aquilegia vulgaris

Stemone Hepatica nobilis



Stemone Anemone





Avena strigosa



Avena sativa fragrans

26



Agrimonia Eupatoria



Berberis vulgaris
 W. Berberis. Prespin



Borago officinalis
 V. Boraso



Balsamina noli-tangere. Volg. Erba impaziente
Impatiens
(nei boschi)



Ballota nigra



Betonica officinalis
V. Betonega



Butomus Umbellatus
V. Castagnola, Guineo florido



Buxus sempervirens



Blitum capitatum



Buphthalmum salicifolium

Briza media



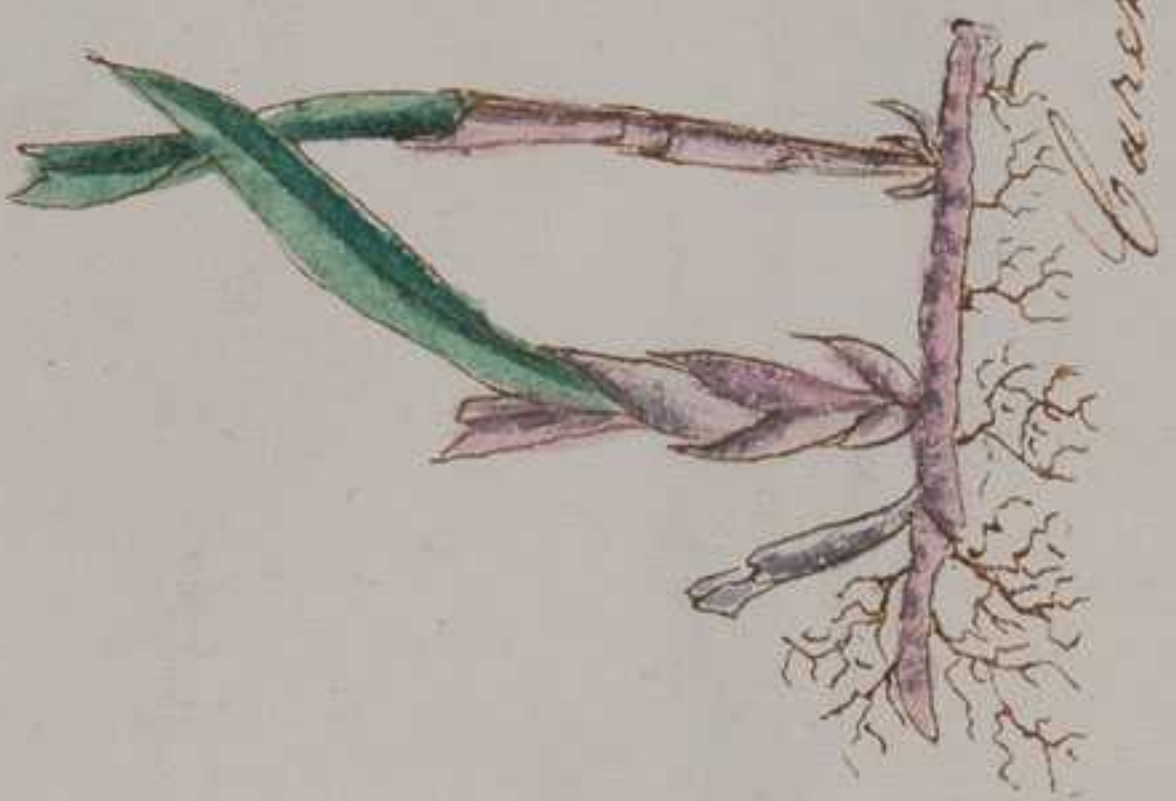
Brassica Ceracea Capitata



Brassica Oleracea Sabauda



Arenaria



Carex



Callitriche verna



Camelina Sativa) *Centaurea Cyanus*
V. Miagro



Caltha palustris



Cerinthe major



Cynoglossum Officinale



Campanula Trachelio *Campanula Trachelium*
 (Campanulaceae)



Lysichiton europaeum
 (Völg. Pamporsin)
 Artanita

Cucubalus behem



Campanula
trachelium



Campanula Alpina



Campanula
trachelium



*Campanula
Barbata*

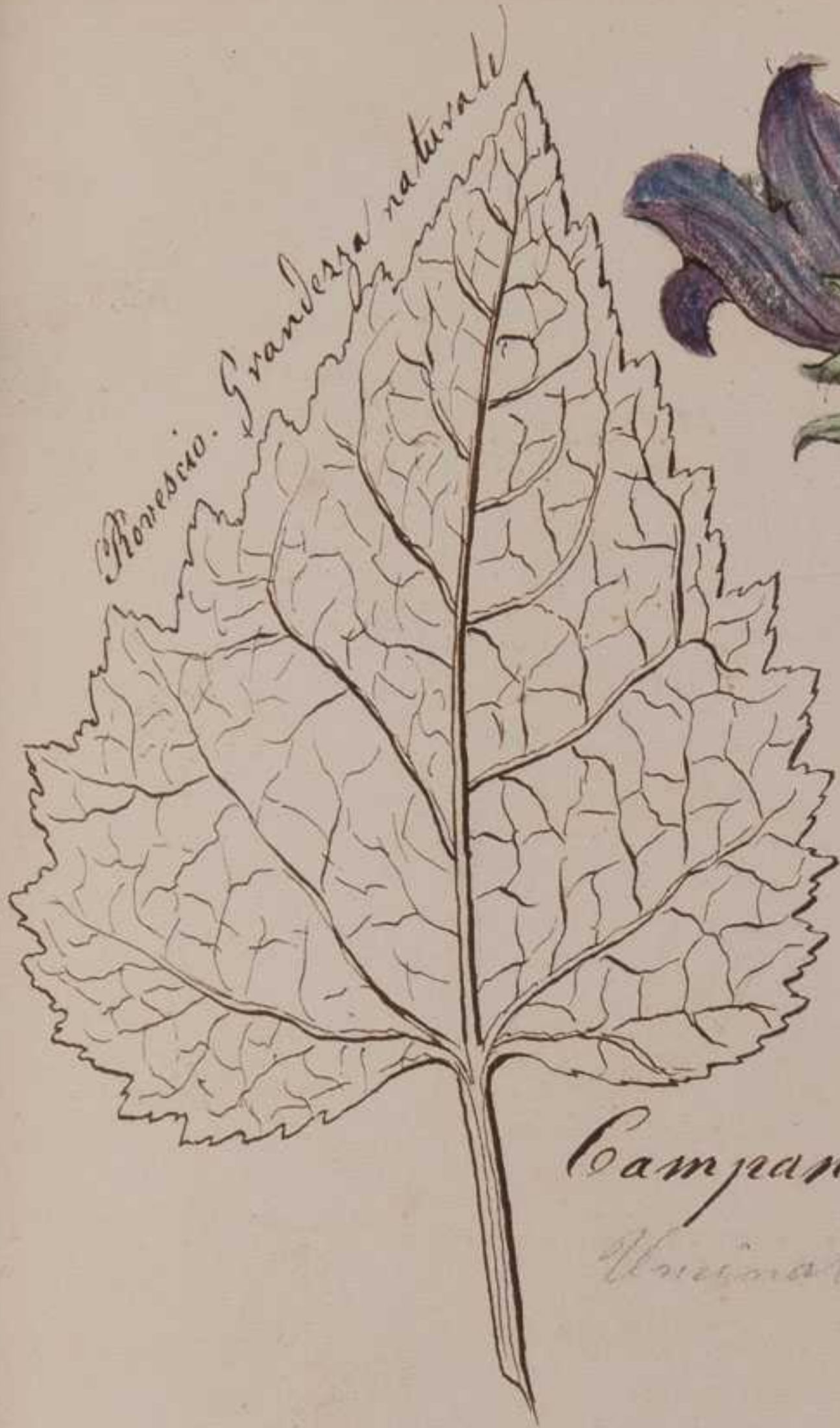


*Campanula
Excisa*



*Campanula
Morettiana*

Protescio. Grandezza naturale



Campanula
trachelium



Campanula
Scheuchzeri



Campanula Thyrsoidea



Campanula Spicata

Campanula rotundifolia





Chelidonium. Majus

Fr. L. cognata



Clematis Vitalba

*Theracopodium
Bononiensis*



Ceratium sibiricum



*Pyrenus sibiricus
Lep. sibiricus*

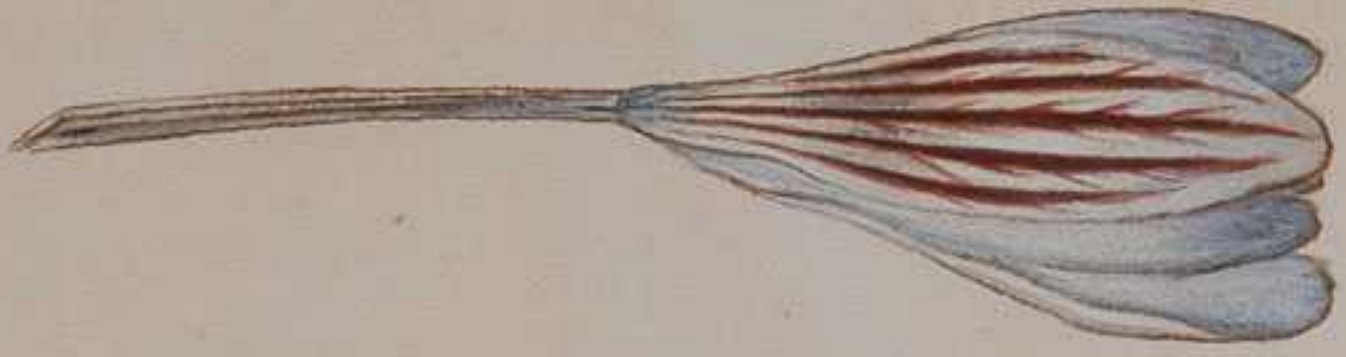




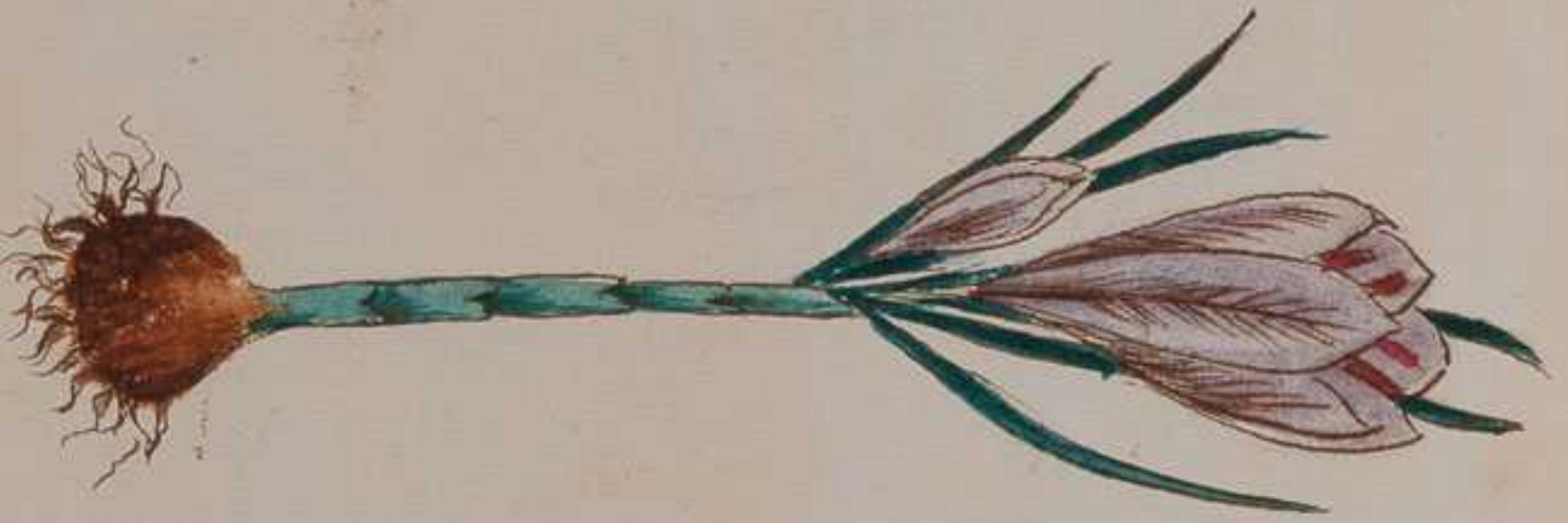
Carex laspiitosa



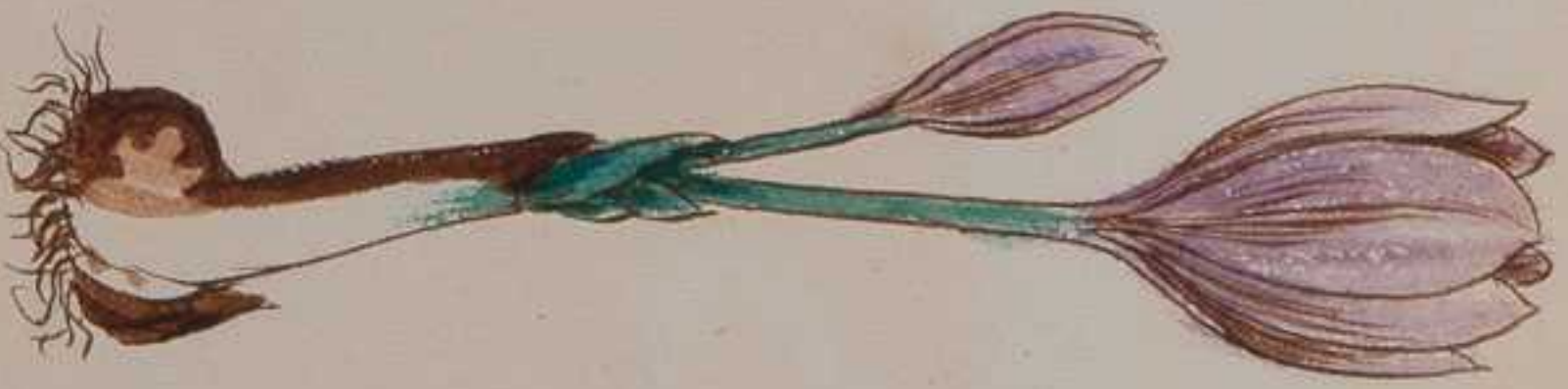
Centaurea nigricans



Crocus Janus



*Crocus
Jatanius
(affinis)*



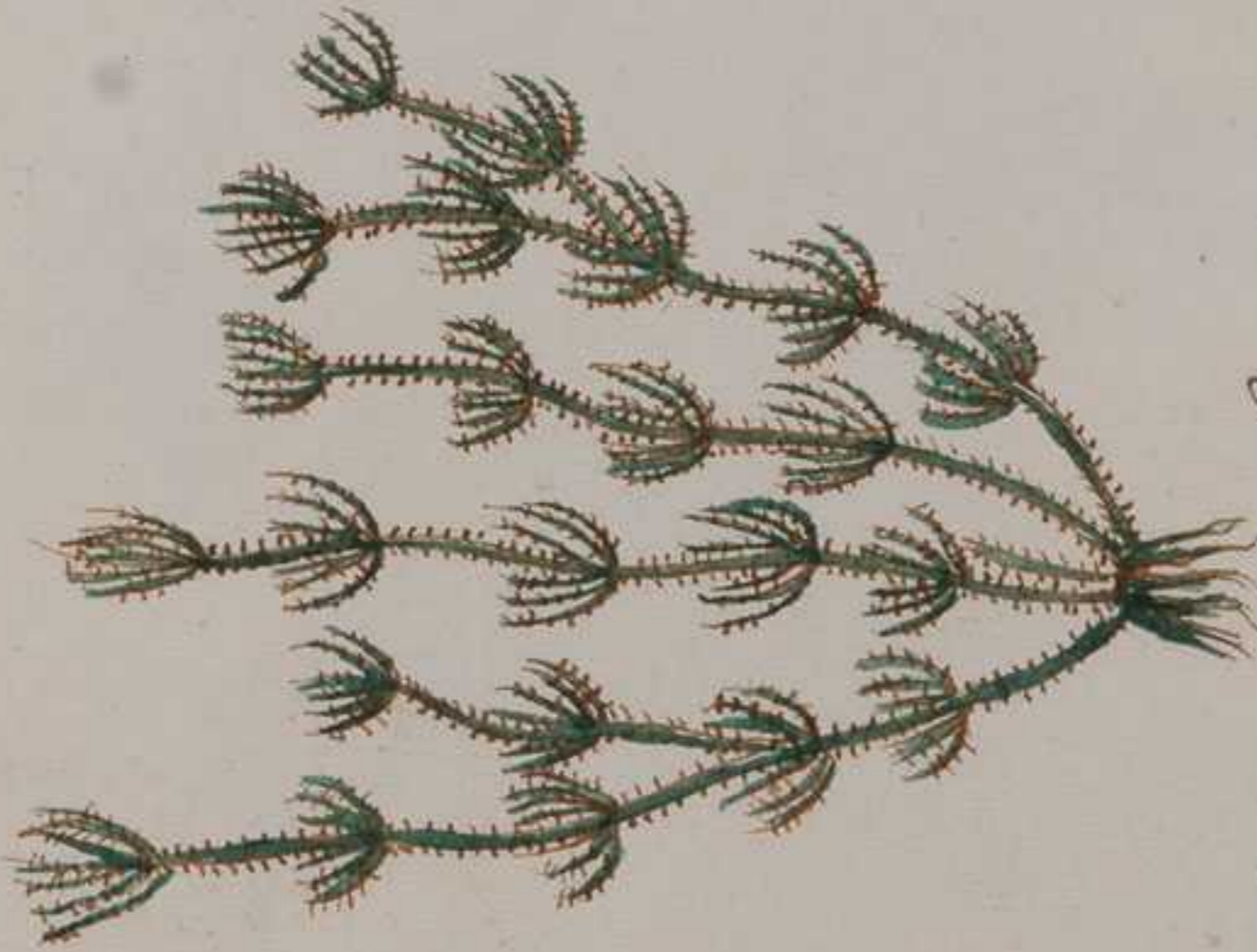
*Cochicum
schumannii*



Cochlearia officinalis



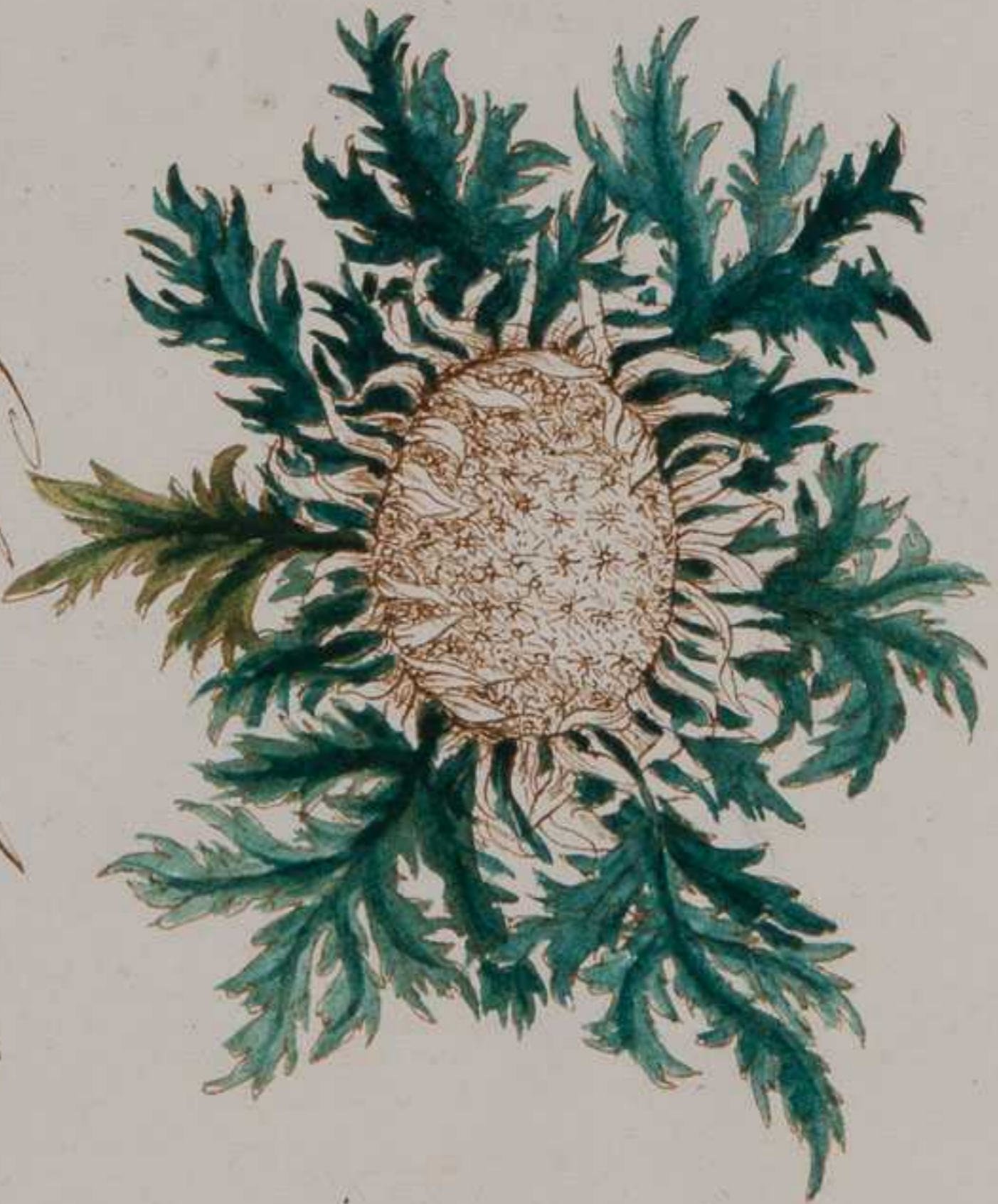
*Cardamina
pratensis*



*Chara
vulgaris*



Pteridium aquilinum
N. J. et Americae Septentrionalis
C. americana



Asplenium adnigrum
N. J. et Americae Septentrionalis
C. americana



*Cicuta major. Cicuta officinale
 Conium maculatum.*

54
Thondrilla shrenkii
juvencæ utropatæ



Thondrilla var. *tuberosa*
Saba strobilata



Thymum
salutæ vulgaris





53

In 2 a 4 pedic

Carduus crispus

52

Monarda sp.
Juncea viscosa

Faba striata

Castilla Vulgaris

54



Clinopodium Vulgare

Cardamine pratensis



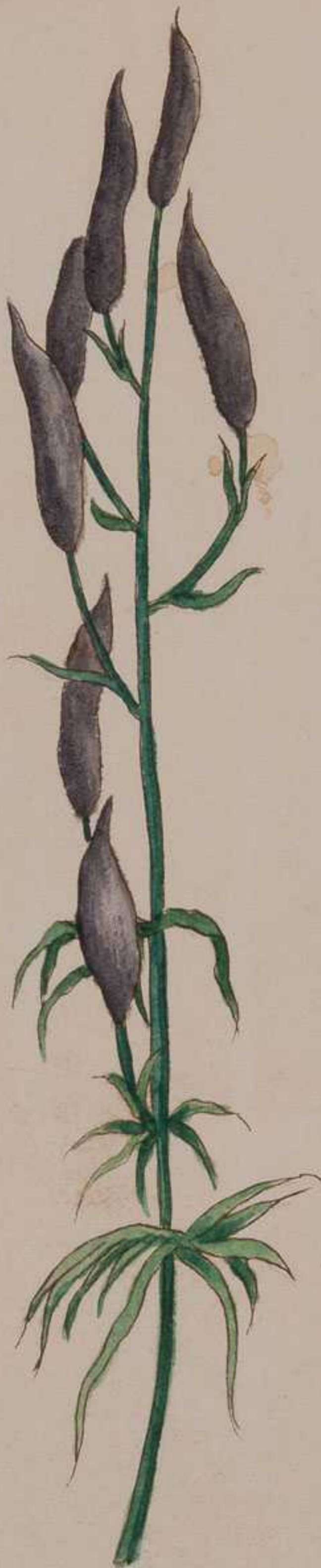
Digitale Purpurea

Quercus viciifolia

Quercus agrifolia



Dianthus Carthusianorum
Dactylis Glomerata



Delphinium Consolida



Dyanthus Sylvestris) (*D. Alpinus*) *D. Monspessulanus*

Draba Helena



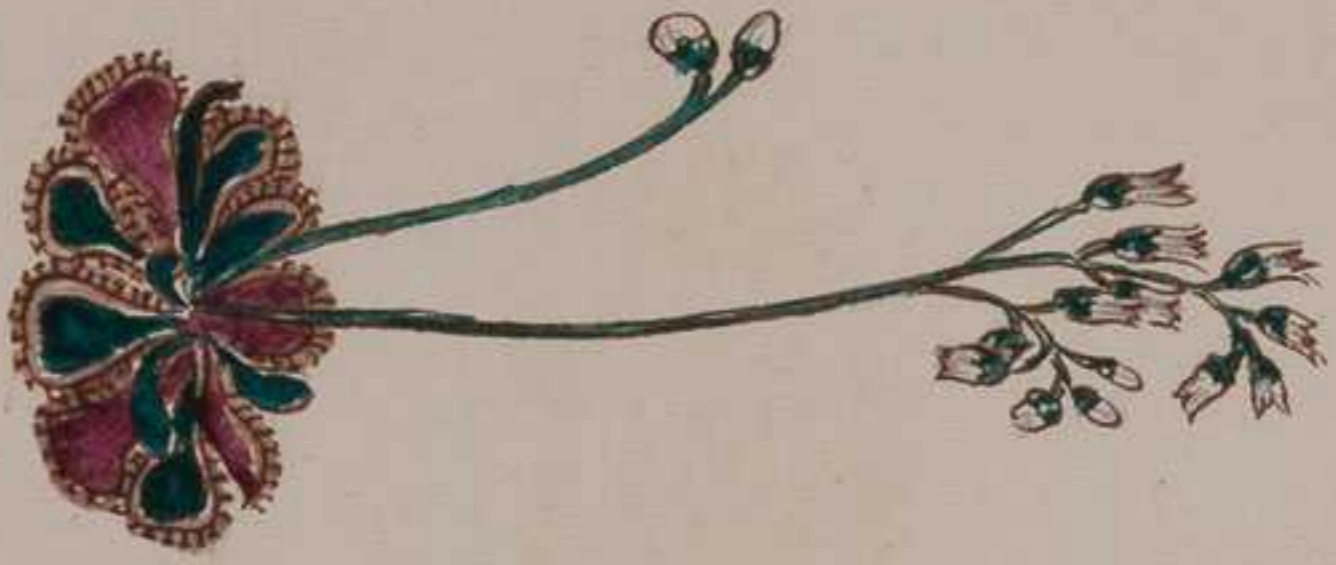


Doronicum cordifolium 59



Doronicum austriacum

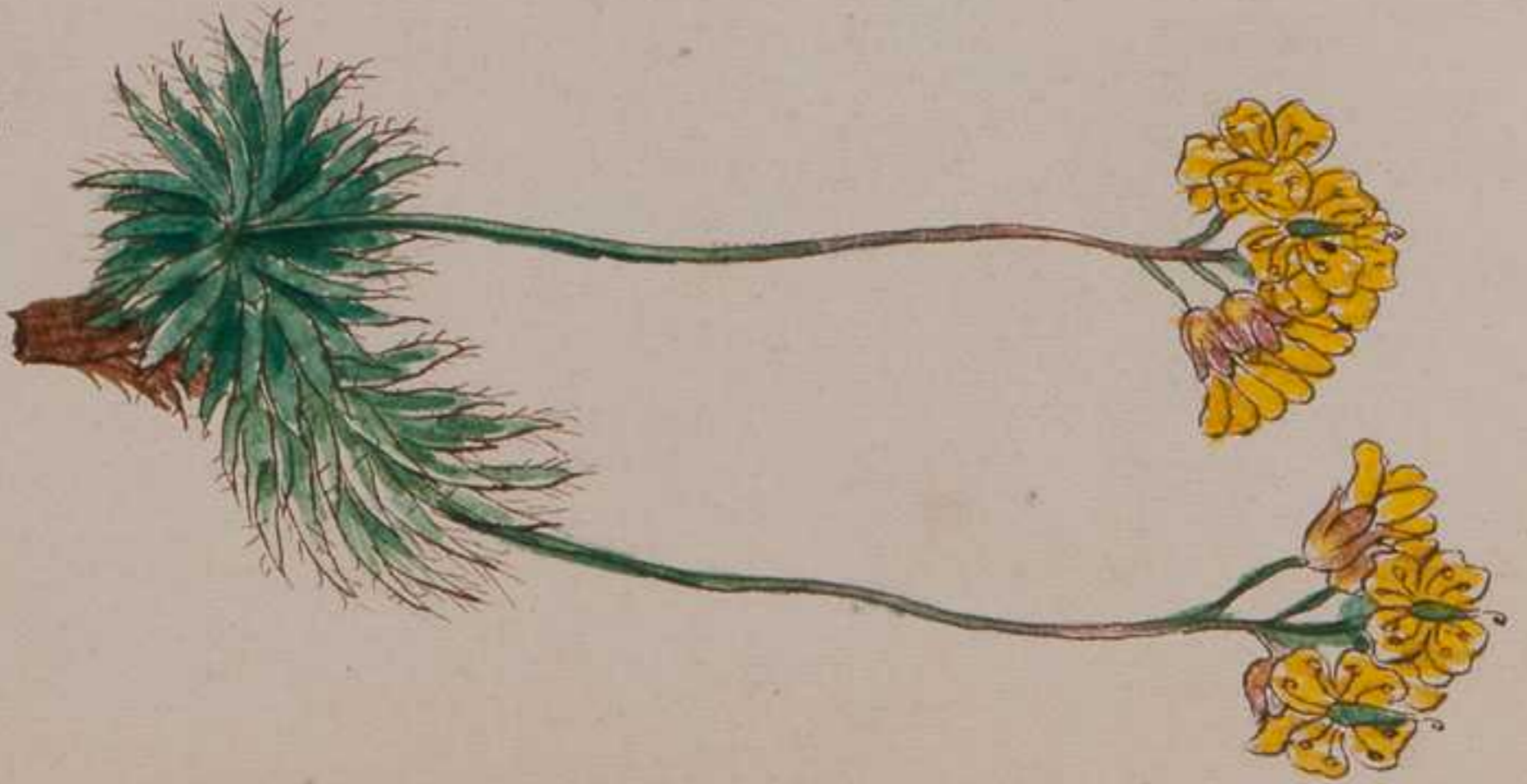
Trisera Rotundifolia



Satura Hammonium
Satura



Saba nigricans





*Dipsacus Sylvestris. Scardiglione Sclavico. Volg. Labbro di
Venere o Verga di Pastore.*



Scitamus Albus



Dryas Pctopetala



Erigeron Acris



1=3 piedi

Erica o Calluna Vulg.

49

Euphrasia



officinalis

Scrophularium luteifolium

4 gr.





o *Caralia sagittata*

Epipactis nidus-avis
Zehrys

Emilia flammea
V. *Emilia scarlatta*
Cuchis di Venere

66



Eriophorum angustifolium

Evonymus Europaeus
V. Fusca



Erythra Pentaurium



2, a 3 pueli in capoglo

Epilobium Debonai



Eriogonum
Amethystinum



Euphorbia Cyparissia
P. altissimi, titonata



Erysimum Cheiranthoides
Tharides



Erythraea stragulaefolia
stragulaefolia





Euphorbia Cyparissias

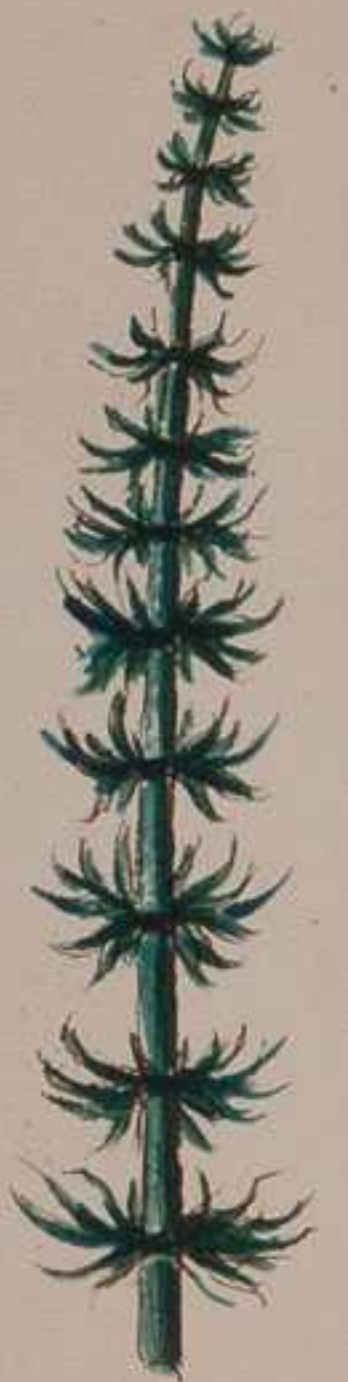


gr. nat.

Erica



Elleborina ^{*latifolia*} *diffoglie larghe.* *Epipactis latifolia*



*Equisetum
hyemale
vulgare*



*Equisetum
arvense*



*Equisetum
fluviale*

(Vulg.) Code de Cavallo



Echinops Vulgare
 V. Pugl'osa, Echio



Eupatorium

Cannabinum



Fumaria officinalis



Fumaria o Corydalis Bulbosa



Flomide fruticosa

V. Salvia Salvatica

(Labiata)

78.



Festuca o *Glyceria Fluitans*



Fritillaria imperialis Volg. Corona Imperiale

Adiantum filix mas



Pteropodium vulgare (Pteris aquilina)



P. Schlegelii



P. Schlegelii



Gratiola Officinalis



Gnaphalium Dioicum



*Gnaphalium
Leontopodium*



Geranium pratense



Genziana Maggiore



Juniperus communis
Juniperus communis



Gentiana



Gentiana Globosa



Hottentia Palustris



Humulus Lupulus
Articuli. Buscangi
Rovaja



Helianthemum Vulgare



Hyoscyamus Niger



Hypericum

perfoliatum

(ora)
St. John's Wort, *herba S. Iohannis*,
succiacidantoli, igerico.
o. Aoyron



Hieracium pilosella



Hieracium pictum



Holcus Lanatus



Hedysarum Onobrychis



Inula Dysenterica



Impatiens noli-tangere
Balsamina



Iris Fiorentina
Germanica
Sp. Guaggiuolo
Gazoi

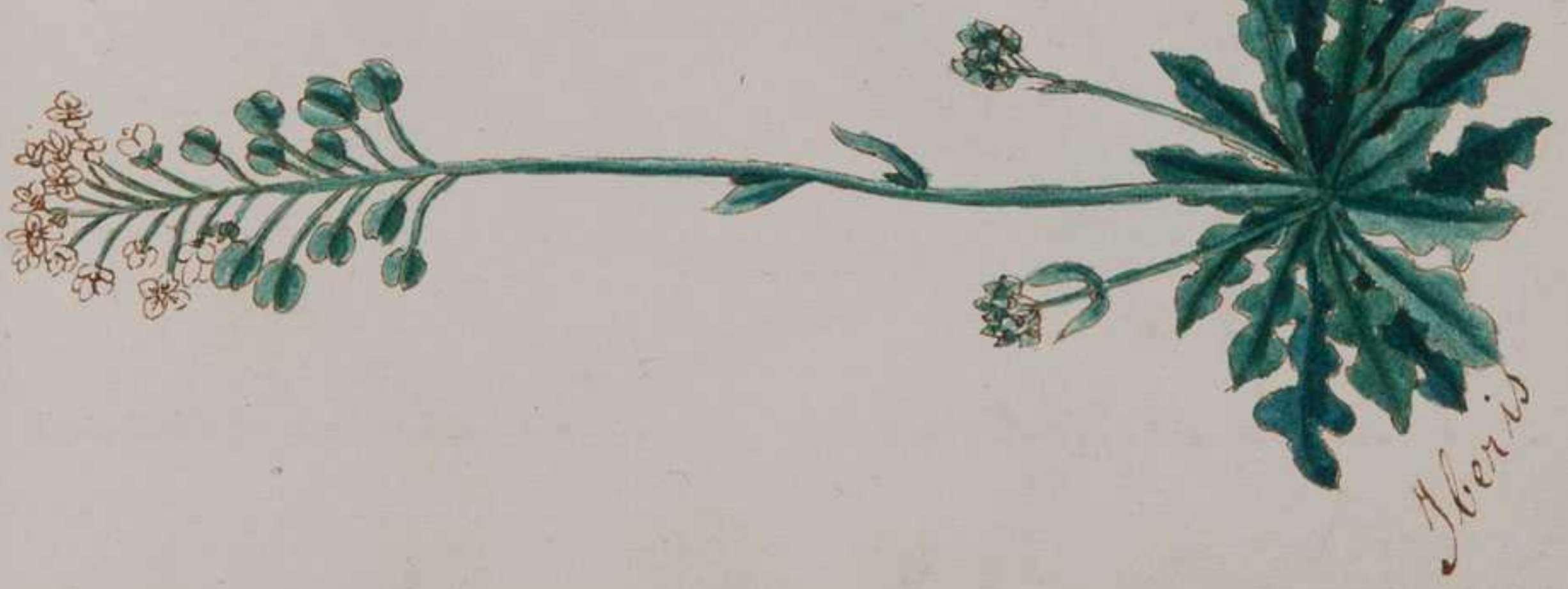
Hydrocaride morsus-randæ



Indigofera Volg. Indaco domestico



Ilex Aquifolium



Thalictrum

Theris



Isatis Tinctoria



Iris Pseudacorus



grand. nat.

Juncus articulatus



Juncus effusus

Jasminum Officinale



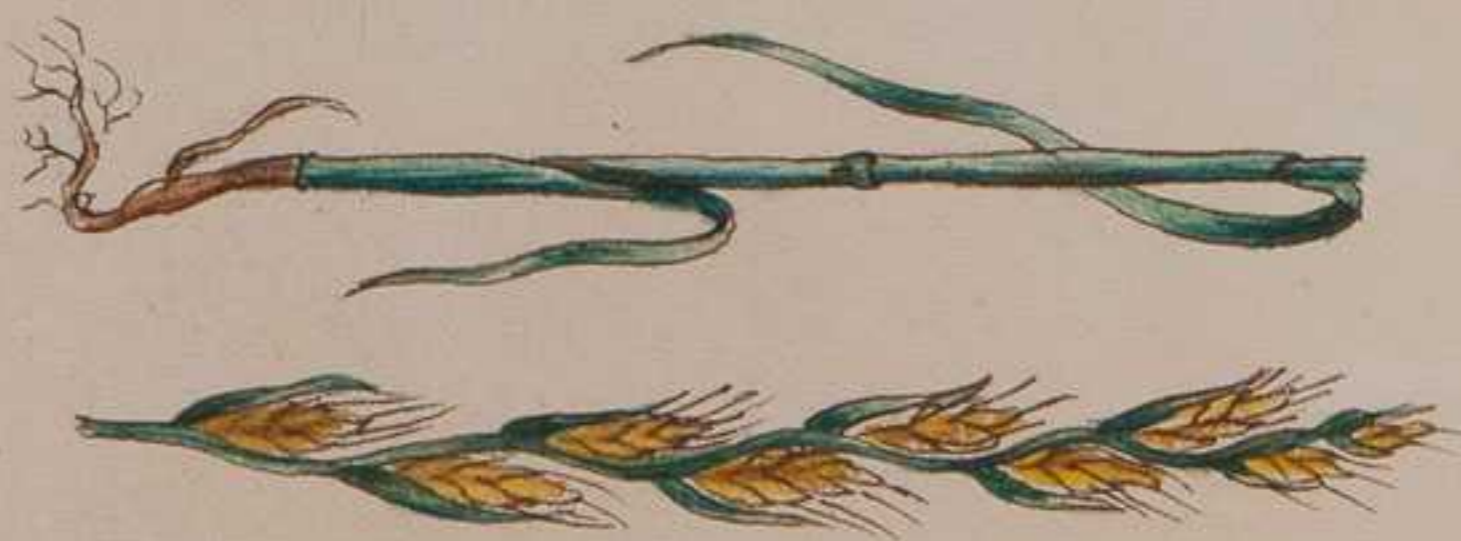
Juncus conglomeratus





Lobelia Siphilitica

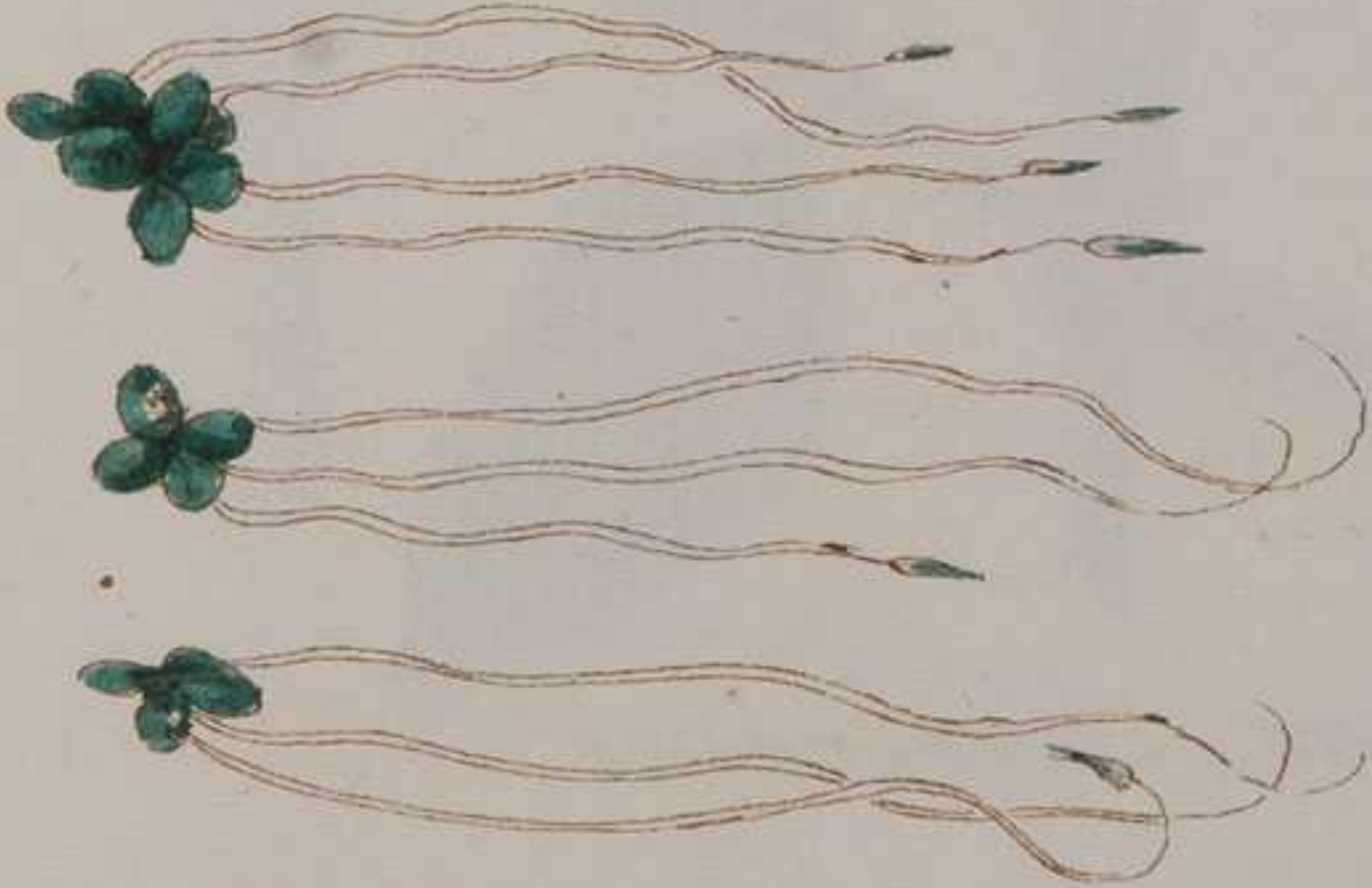
Lotus corniculatus (*Spinnachia vulgaris*)



Lotum
semulentum



Leontodon autumnale



Lemna minor
(Duckweed)

102



Lathyrus Tuberosus



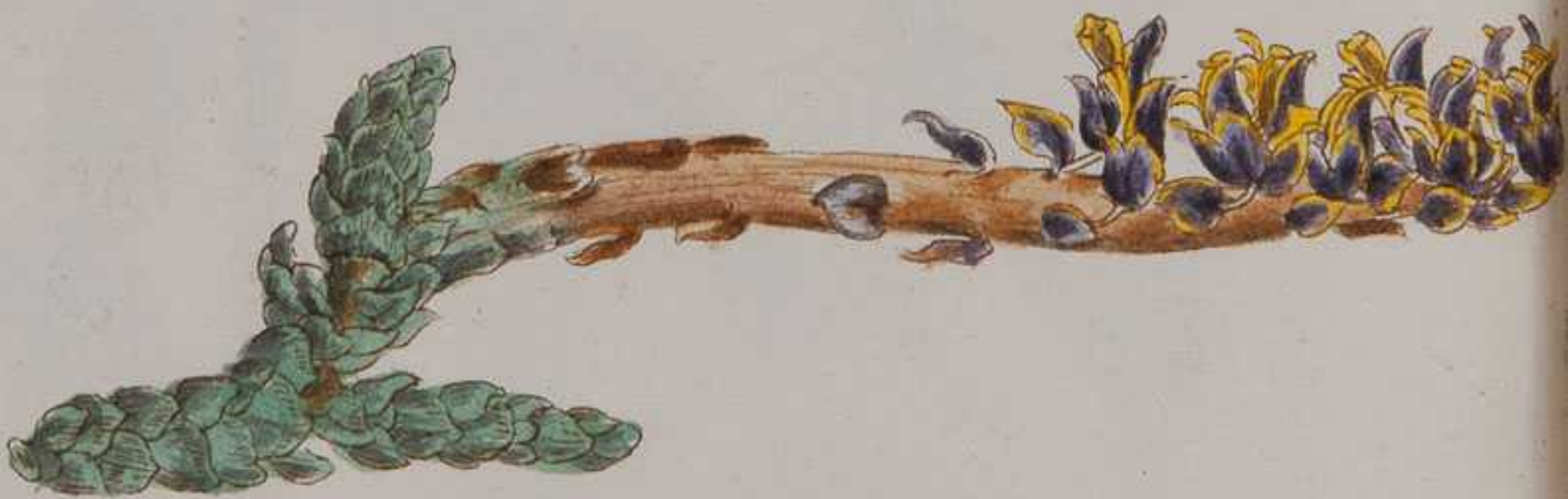
Lycopsis Arvensis

Lithospermum Arvense

104
Lychnis Europæus



Salthora Squamaria





Lupinus luteus



Leonurus cardiaca

106



Lanium Album



grand. nat. tar.

Linaria vulgaris
o Pelloria



Lunaria Annuua
Lunaria Maggiore
V. Erba argentina



1/3

Linaria Vulg.
Coryis o
Linaria
vulgaris

Lolium perenne
V. Logliarella o giogliarello

Linum tenuifolium



Leontodon Taraxacum o *Taraxacum officinale*
 Volg. Dente di Leone, pisacani, taraxaco.



Lycnis Flosculi



Lilium Bulbiferum



Leucojum Vernum



Lilium Martagon



Cuscuta Europaea } sopra la *Medicago sativa*
V. Granchiarella } *V. Erba medica*

114

Mentha piperita



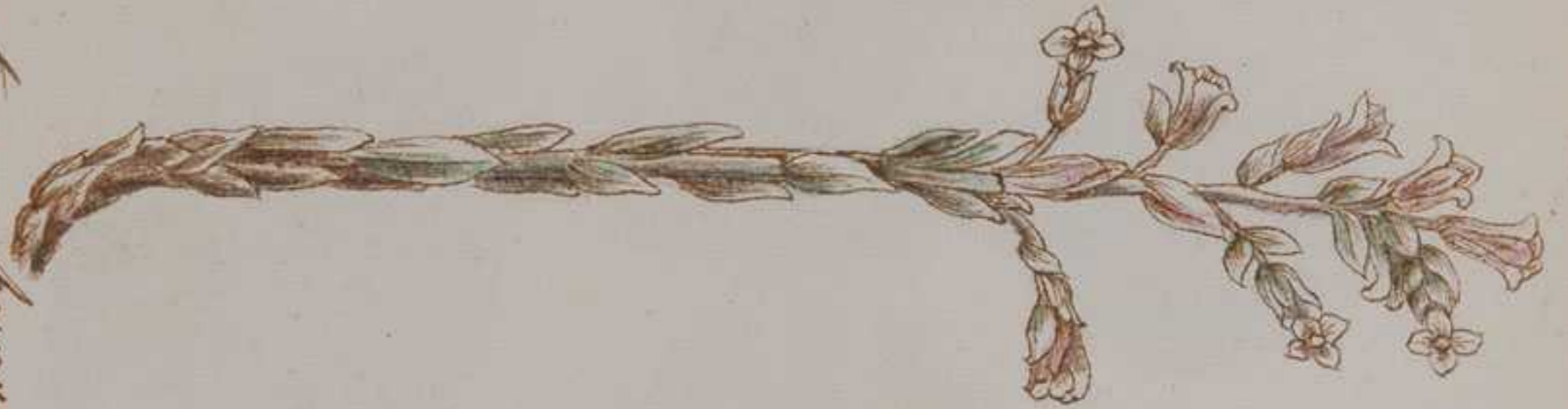
Mentha crispata



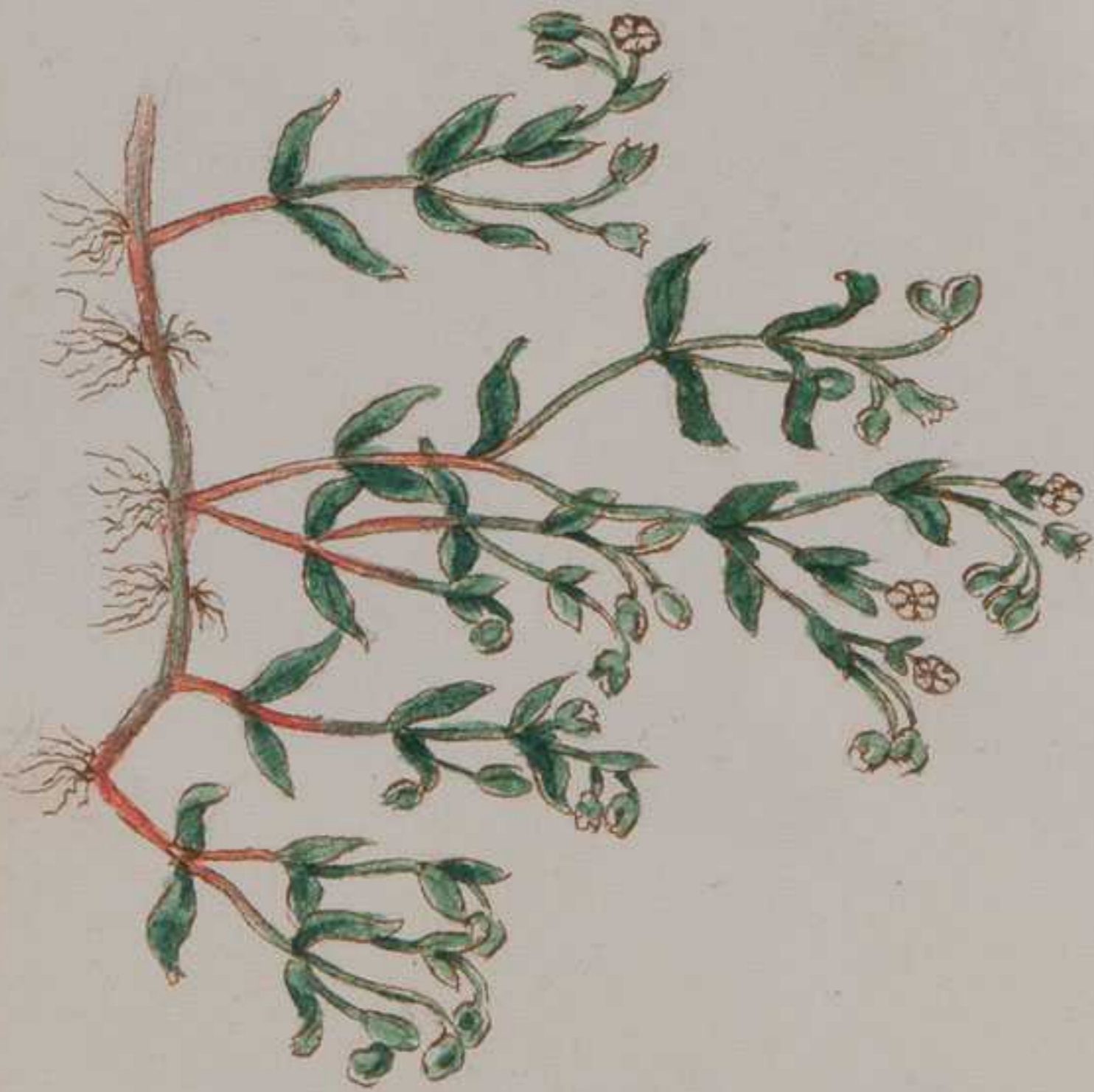


Marrubium Vulgare

Monotropa hypopithys



Monarda fontana





(Miosotis)

Peronnia Peacabunga



(Mulgedium alpinum)

Marsilea quadrifolia





Malva Alcea



Medicago Lupulina



Melilotus Offic.



Melampyrum arvense) *Melissa officinalis*

122



Matricaria chamomilla



Narcissus poeticus



Narcissus pseudonarcissus

Pastinaca officinale



Chenopodium stricatum





Nymphaea Alba
N. Capellazgi, nenufar

126



Ninfea Lotus Coerulea



Inopordon Acanthium

128



Cenothera Biennis



Orchis latifolia



Orchis Militaris

Cochlos Mitrata



Cochlos Tomopsea



Cochlos Myodes





Ophrys Apifera
Ophrys Apifera

Ophrys Speculum

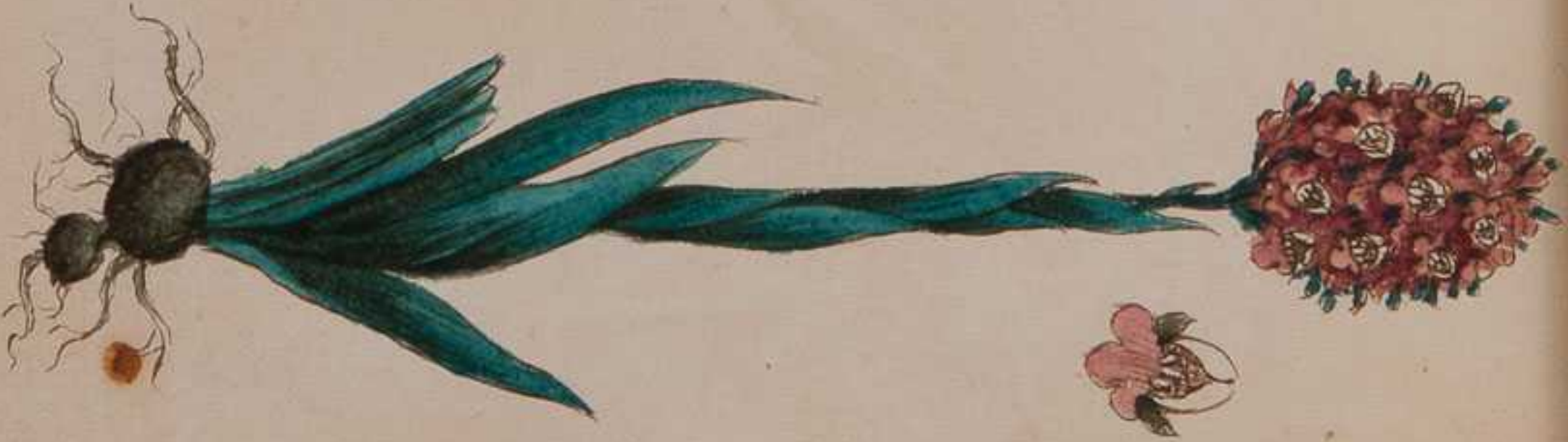
Orchis Moris



*Orchis Eypriodorum
calceolus*



Orchis Pyramidalis





Opalis Cornuta
V. Aetiosella, carpina, lucjola
trifoglio acetoso, pannucolo



Cnōris Spinosa
V. Bulimicula



V. Felice
Florida



Oxalis Acetosella



Oxalis Violacea



Anisothogalum luteum
 = *Gagea Pratensis*



Crobylchis Sativa



Lobelia Caryophyllacea



Vinca perrinca

Polygonum orientale
V. cochine rose

Polygomon
Bumex stricta



Polygomon
Tagoxylum

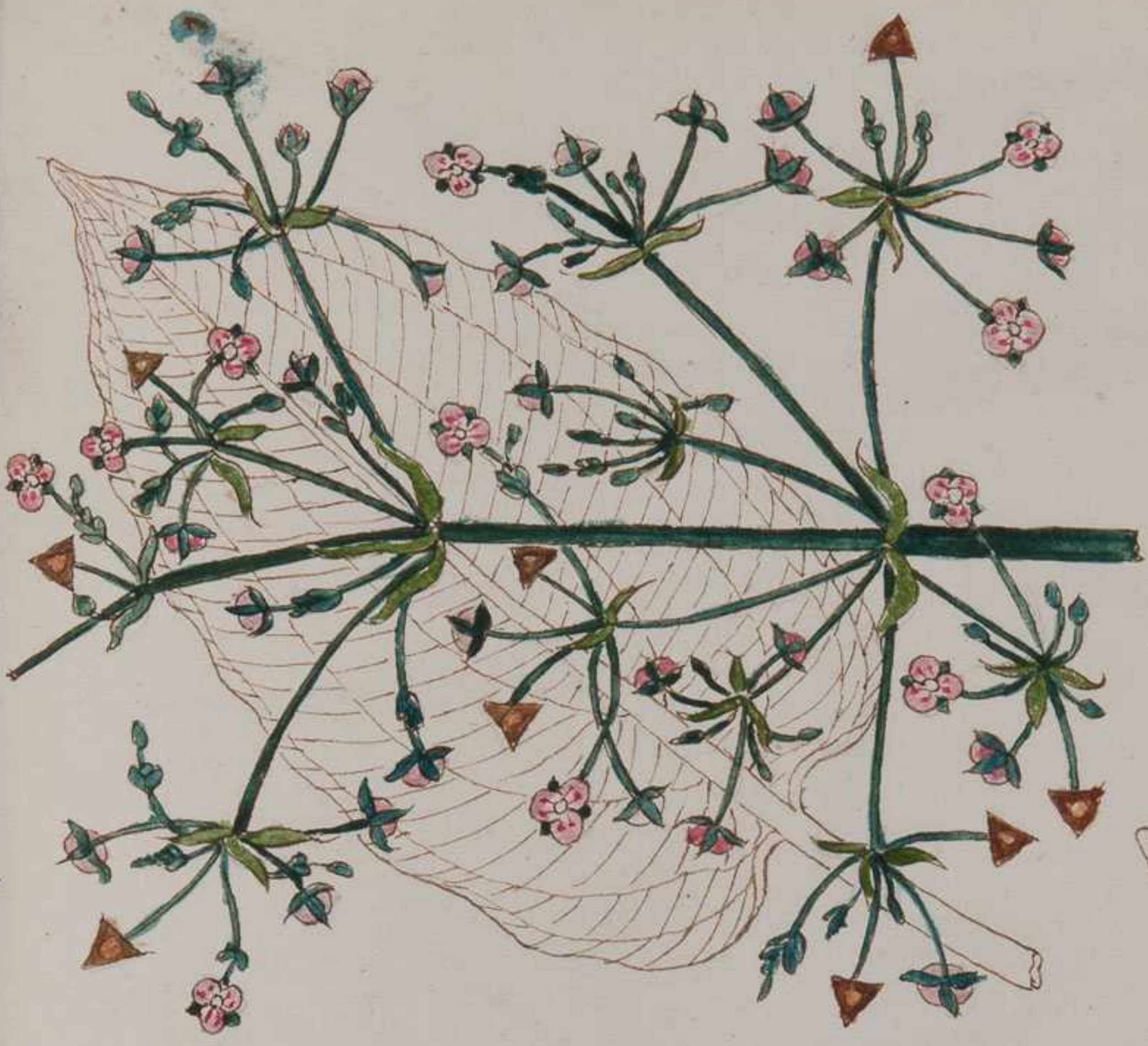


Potentilla
Amisima



Polygala
amarum





Plantagine aquatica

Alisma plantago



Plantago major. Petasicola

Plantagene

humilis

140

Plantago minor lanceolata



Plantago subulata





Pyrola rotundifolia.

Polygala vulgaris
V. Erba Corzolina.



Pulmonaria angustifolia Vitz. *Pulmonaria* Fy. Ste.
(Dirot. Borraginace)



Panicum viride V. *Panicastrel* o
Pandel



Portulaca

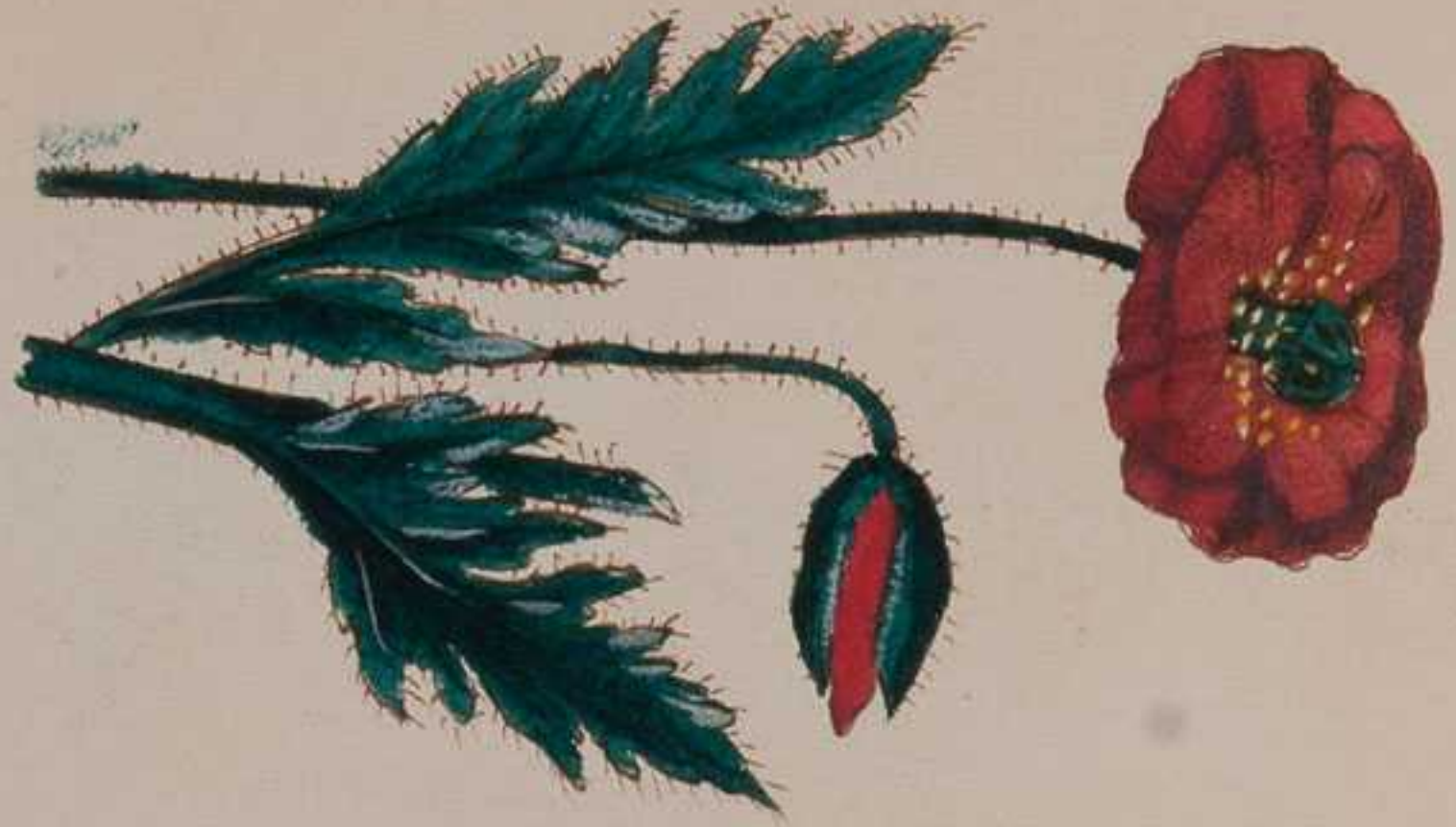


Pinguicula Vulgaris

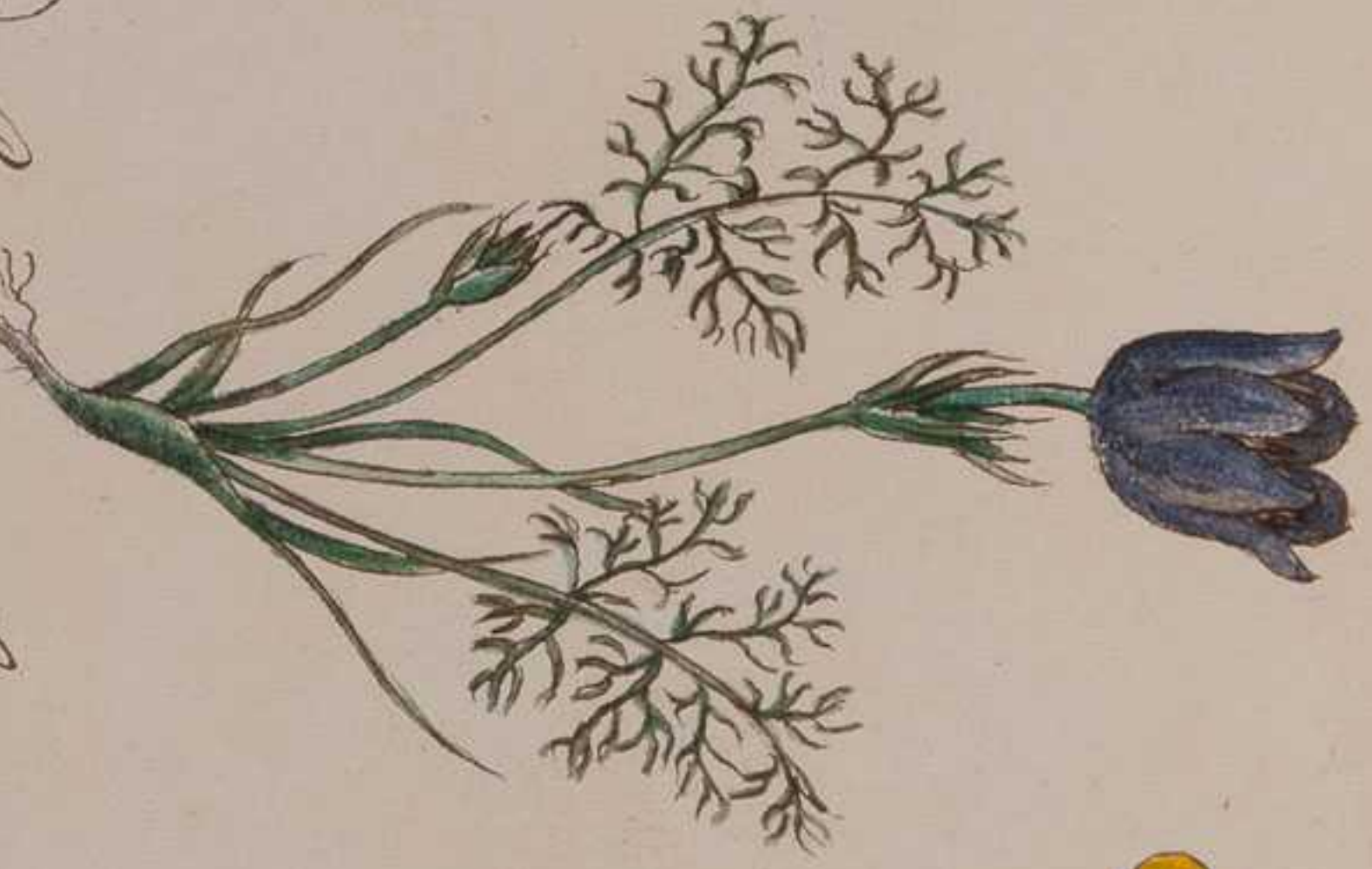


Pisum Arvense *Pisello Selvatico*
(Leguminosae)

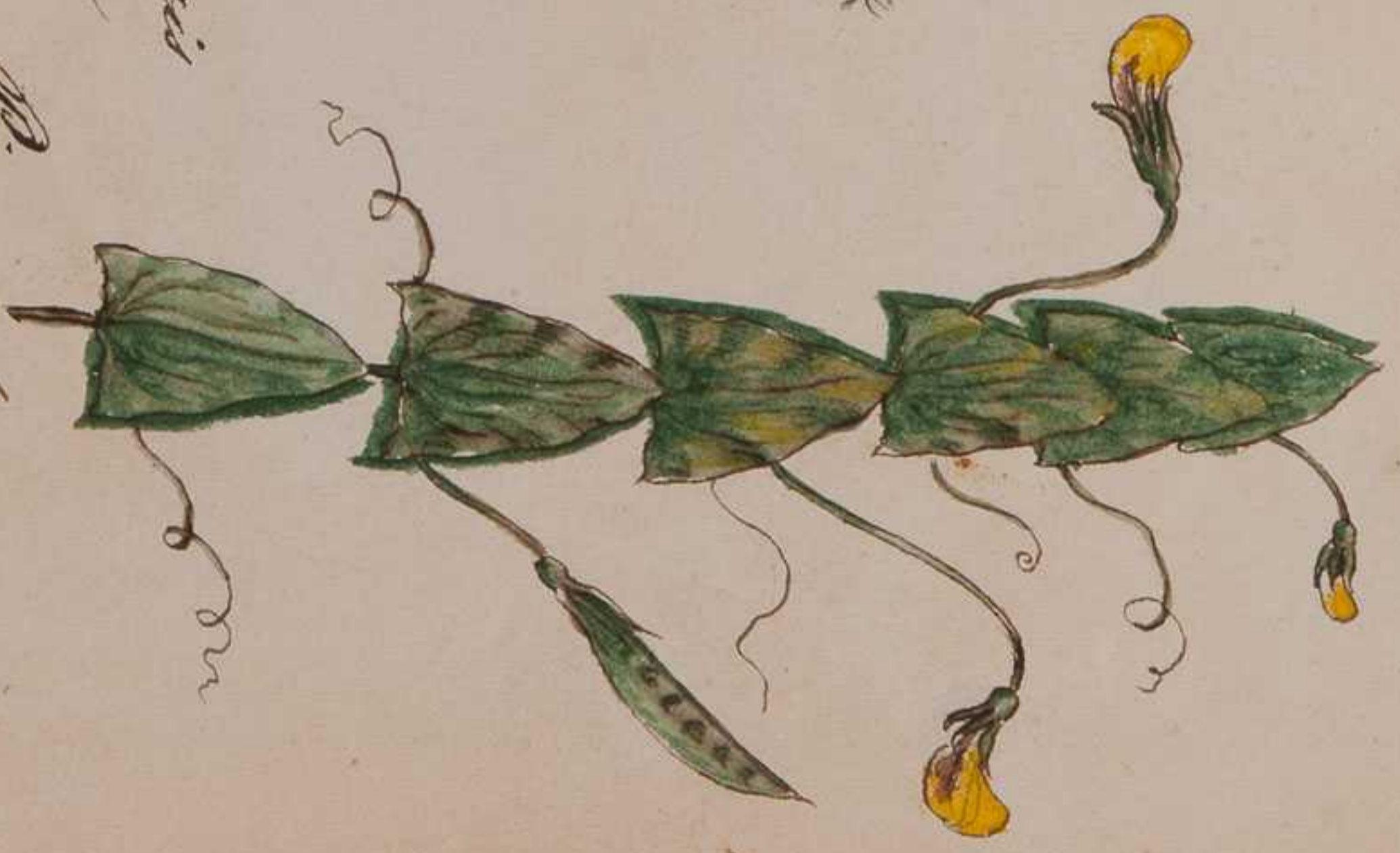
Papaver Rhoeas
P. serotinum, noronhaiis



Pulsatilla Nuttallii
P. Nuttallii, Nuttallii



Pisum sativum





Polygala amara



Polygala chamaedryas
P. Martelliana silvestre



Prunella Grandiflora



Prunella Vulgaris
V. Brunella, Consolida
minore



Ranunculus montanus
Ranunculus montanus
Ranunculus montanus
Ranunculus montanus

Ranunculus montanus

750



Rosa Canina



Rubus Fruticosus



Pipturus spirata





*Ranunculus
sceleratus*



Ruta graveolens



Ruscus aculeatus

Mirtò spinoso, Brusco, Spruneggiolo. 153

754



Ranunculo Lanced. ^{to} Ran. ^{us} Lingua
o. Jelle canne.



Ranunculus acris

Arisaema



Ribes Grossularia
V. Uva Spina



Sambucus nigra

158



Static Armeria. V. Pickett
bordura di giardini



Saxonaria Officinalis



Silene acaulis



(Arbusto)

Symphoricarpos racemosa



Scirpus maritimus



P. Scutella) *Salvia Pratensis*)

granulata



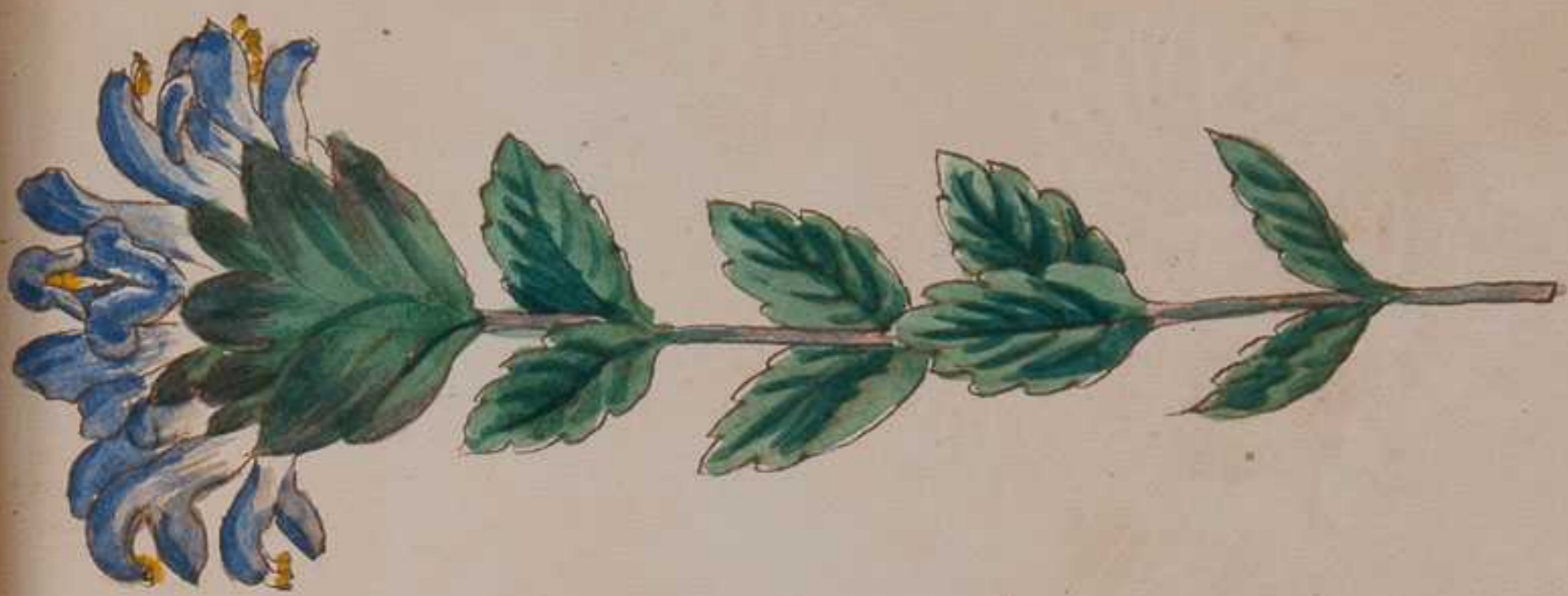
Saxifraga granulata



Semperviva tectorum



Sempervivum montanum



Scutellaria alpina 154



Lithium virgatum
Sp. Salicaria



Senecio vulgaris



Scabiosa folio integro
Pyenocomon



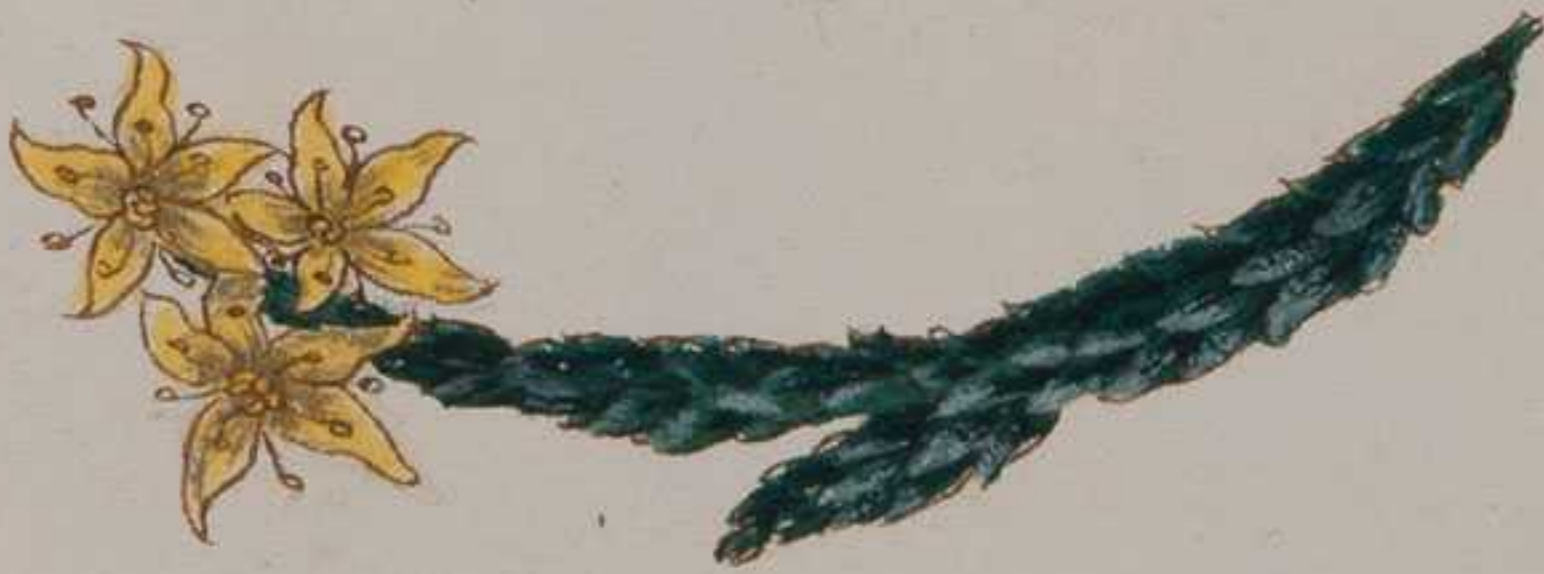
Therarodia Arvensis
Serardia de' campi
 delle Galliee, Galliee.



Scirpus Rubra



Schoenus albus



Secum acre

168



Symphytum officinale



Solanum halimifolium



169
Solanum nigrum
N. Solatvo. Gesege. Intense

470



4. S. yuicki

Solanum Dulcamara



Spartium Scoparium

Scutellaria Galericulata



Satureja hortensis
V. Salezola, Satureja



Stachys Silvatica

174

Stachys Palustris



Stigmbium officinale





Trifolium Pratense
V. Lerscho, trifolium

Thalictrum bursa-pastoris
M. Bonaldi



Trifolium repens
M. Bonaldi





Tragium, o Tragoselinum minus
per desfontainii

178



Typha angustifolia

Typha angustifolia
V. Sala



Triticum Repens







17



18



19



20

181



21



22



23

182



24



25



26



27



28



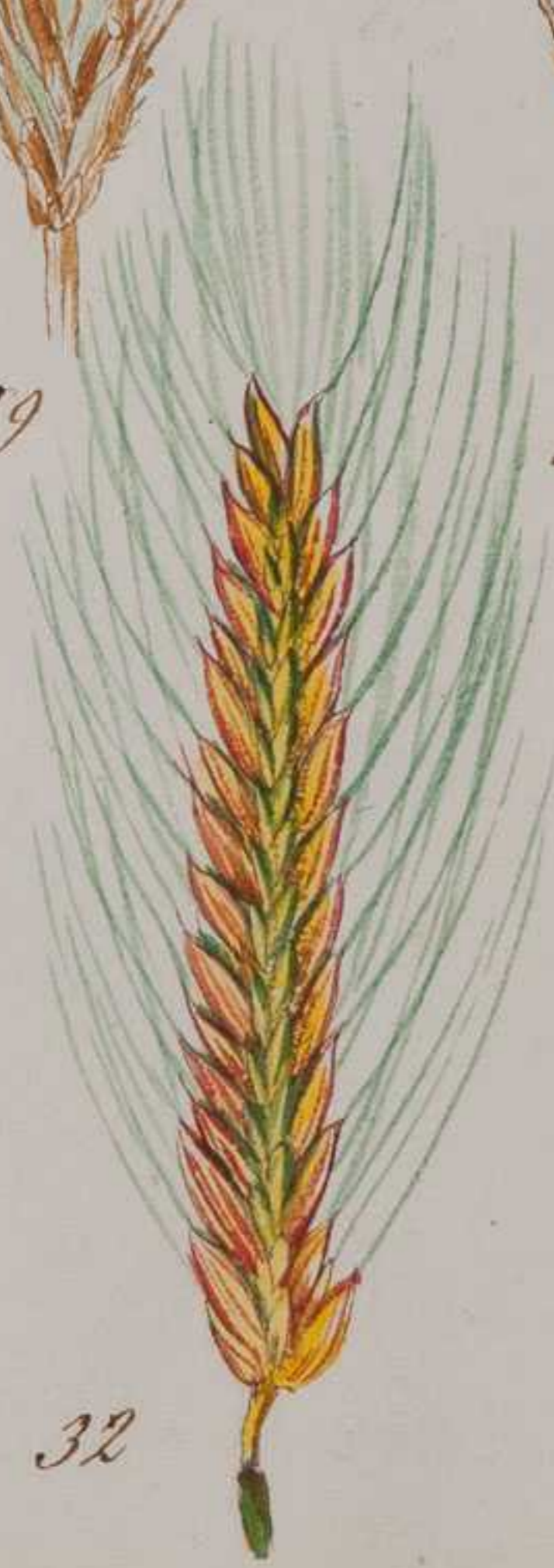
29



30



31



32



33

184



Teucrium chamaedrys
V. camædrio, querciola



Teucrium chamaepithys



Tenebrio Marum
V. Maro



Turritis Glabra



Thymus Consolida



Thymus Serpyllum



1/3

Tragopogon Pratenstis

Tanacetum Vulgare



Tulipa sylvestris



Thymus pratensis
Thymus vulgaris





2/3 gr. nat.

Urtica latifolia



2/3

Urticularia vulgaris
V. Erba vesica
(aquatica)



Urtica labeo foetida
V. Galiopsi Ladanum

Veronica officinalis



Fig.



Veronica Fruticulosa

Geranium



Geranium phaeum
rubrum



Geranium phaeum
caeruleum





Vicia sepium

194
Perovnia triphylla



Alcea rosea



195



Valeriana officinalis



Veronica saxatilis



Pisum sativum



Verbena Offic. (Ciba di S. Giovanni)

198

St. Isaacum album



Piburnum Spulid

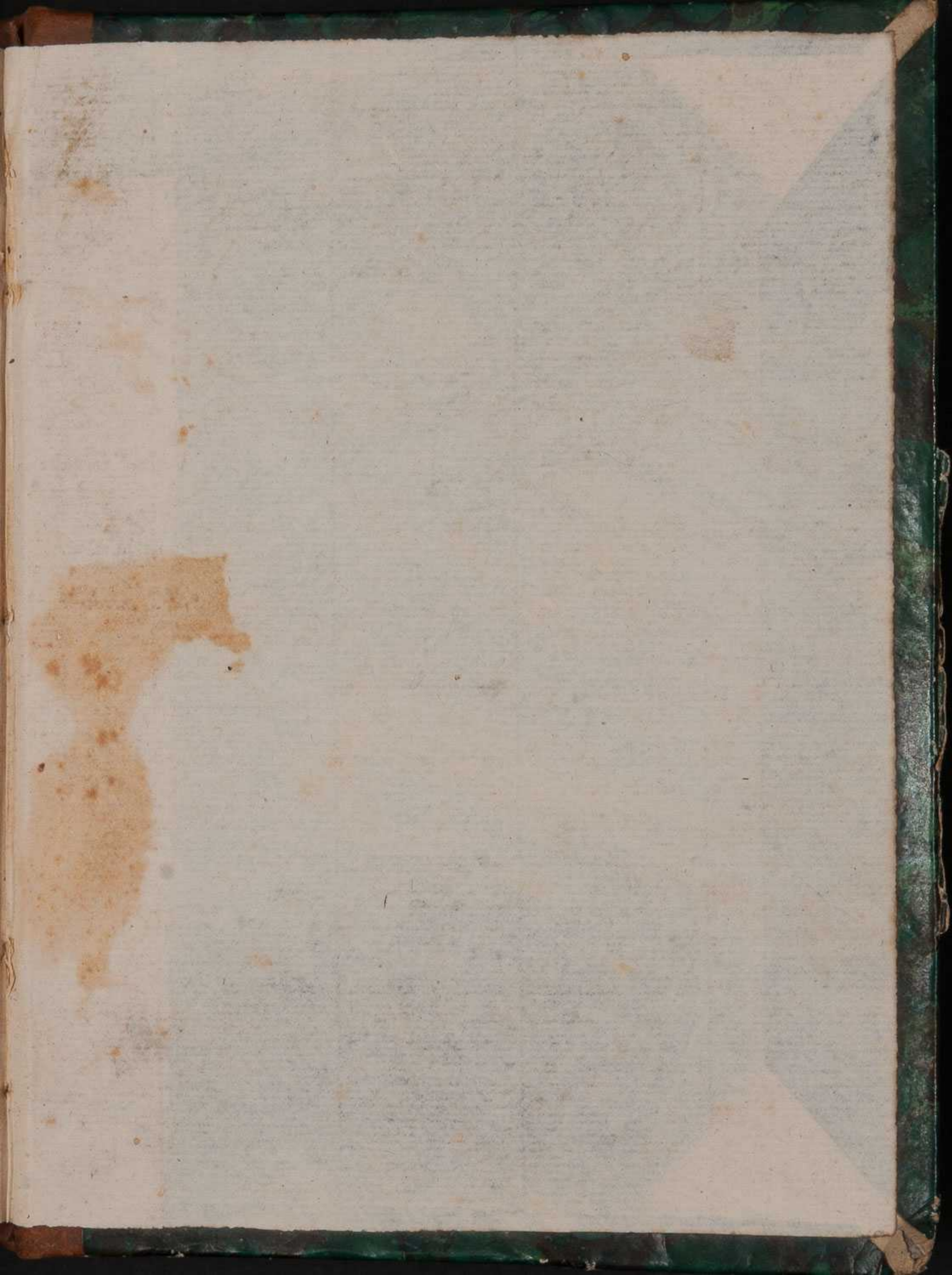


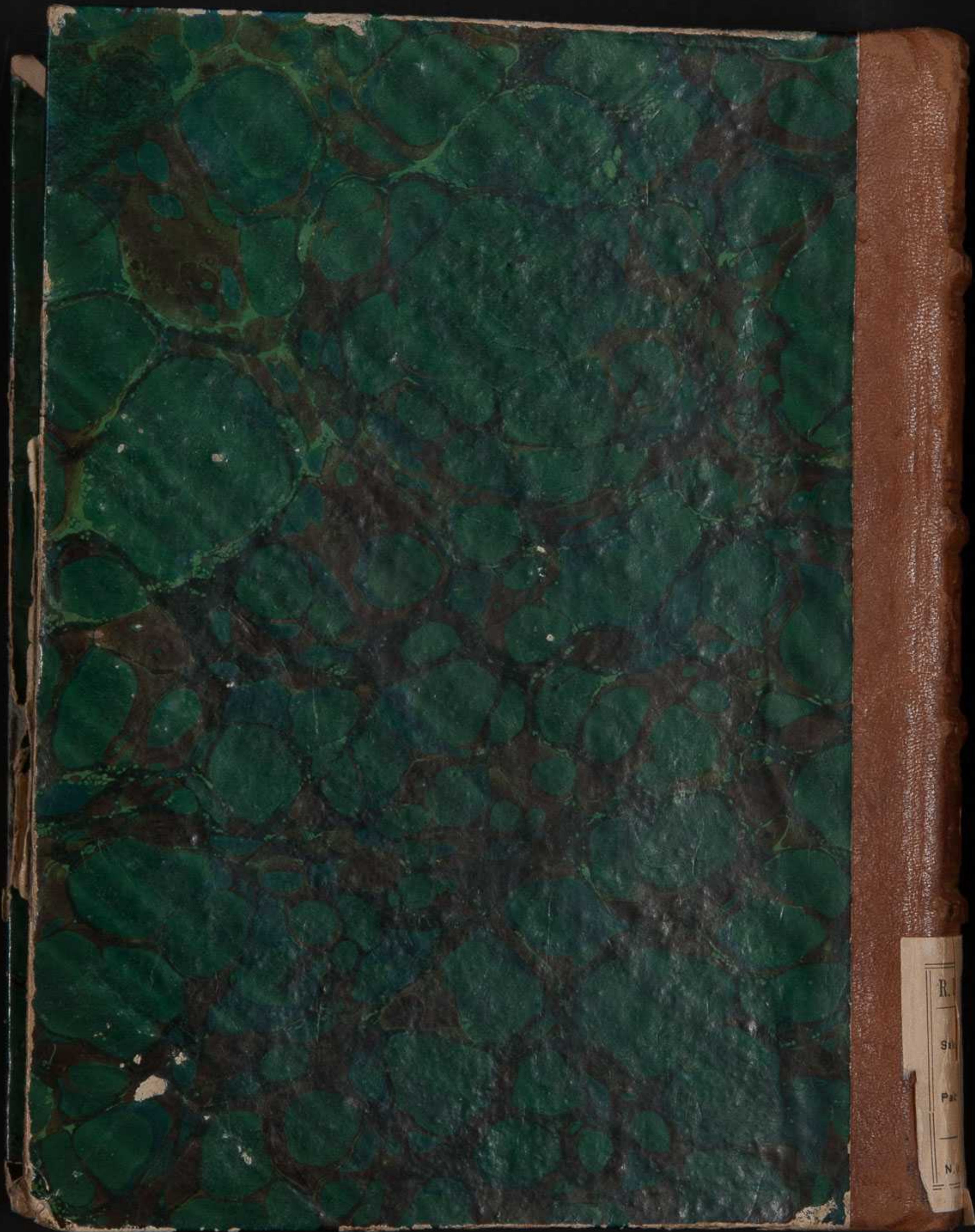
Verbascum Lapsus





Vitex





R.
S.
P.
N.