

Inceptum Kal. Sept. MDCCCLX

Molluscorum
Icones conchiliorum

aequatilium et terrestrium, aliorumque
indigenorum animalium per Sylvan,
nemusque Montellum collectorum.

Plantarum aliquot rariorum fissio-capnotipia

1860

Propheten A. M. M. M. M.

1811. 1812. 1813. 1814. 1815.

1816. 1817. 1818. 1819. 1820.

1821. 1822. 1823. 1824. 1825.

Spiegazione

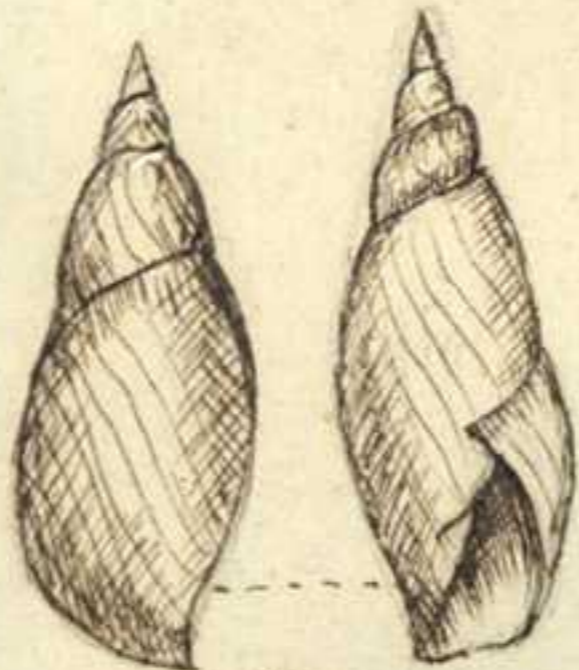
- Fig. 1. *Paludina vivipara* β
 " 2 *Lymnaea stagnalis*
 " 3 *Helix umbilicaris* - *Helix planospira*
 " 4 (*Acathina acicula* (?)) (*Clausilia papillaria*)
 " 5. *Cydotoma elegans* (Pupa frumentum)
 " 6 *Helix nemoralis*
 " 7. *Lymnaea auricularia*
 " 8 - *Planorbis corneus*
 " 9. (*Lymnaea palustris*) *Paludina impura*
 " 10 *Planorbis carinatus*.
 " 11 *Helix obvoluta* sine peristomate.
 " 12 *Helix cellaria*
 " 13 *Pomatias maculatum*
 " 14 *Helix acutimargo* - *H. isodoma*
 " 15 *Paludina vivipara* - γ.
 " 16 *Helix obvoluta*

A. W. W. A.

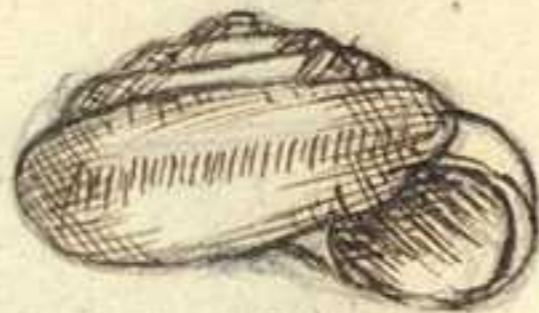
1. *Albion*
 2. *Albion*
 3. *Albion*
 4. *Albion*
 5. *Albion*
 6. *Albion*
 7. *Albion*
 8. *Albion*
 9. *Albion*
 10. *Albion*
 11. *Albion*
 12. *Albion*
 13. *Albion*
 14. *Albion*
 15. *Albion*
 16. *Albion*
 17. *Albion*
 18. *Albion*
 19. *Albion*
 20. *Albion*



Fig. 1



2



3-a



4



3-b



5



6



7



8



9



10



11



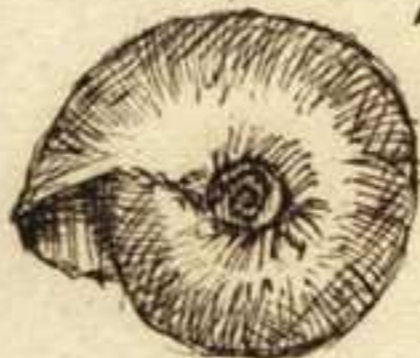
12



13



14



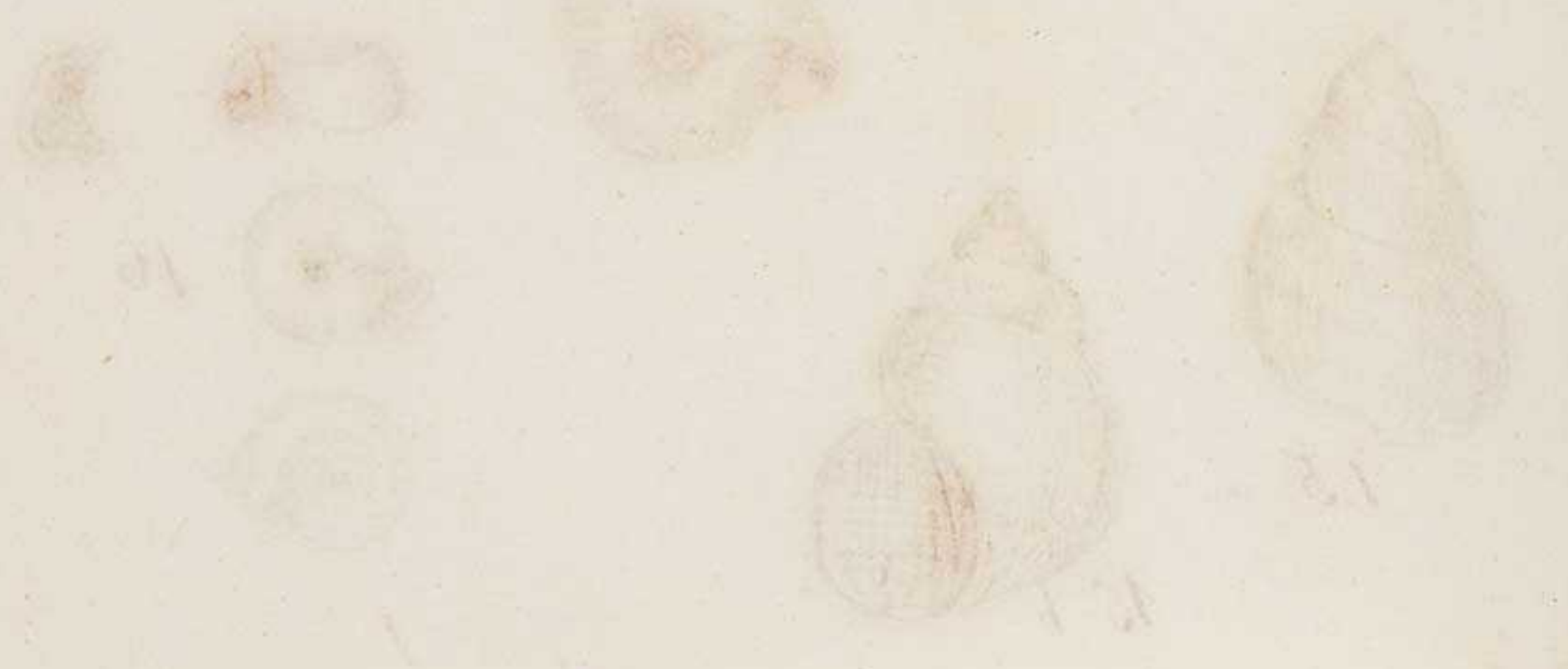
16

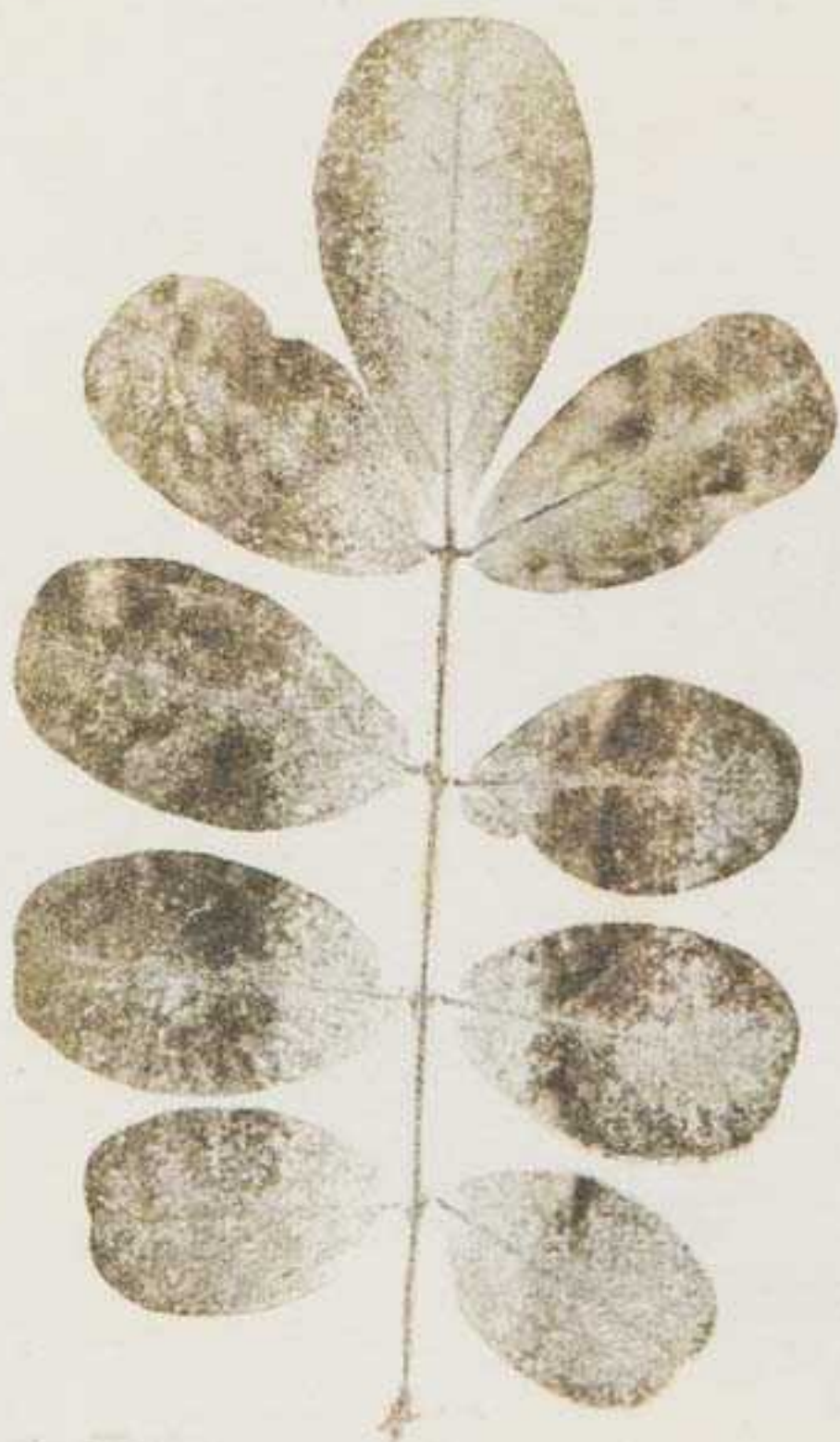


15-a



15-b









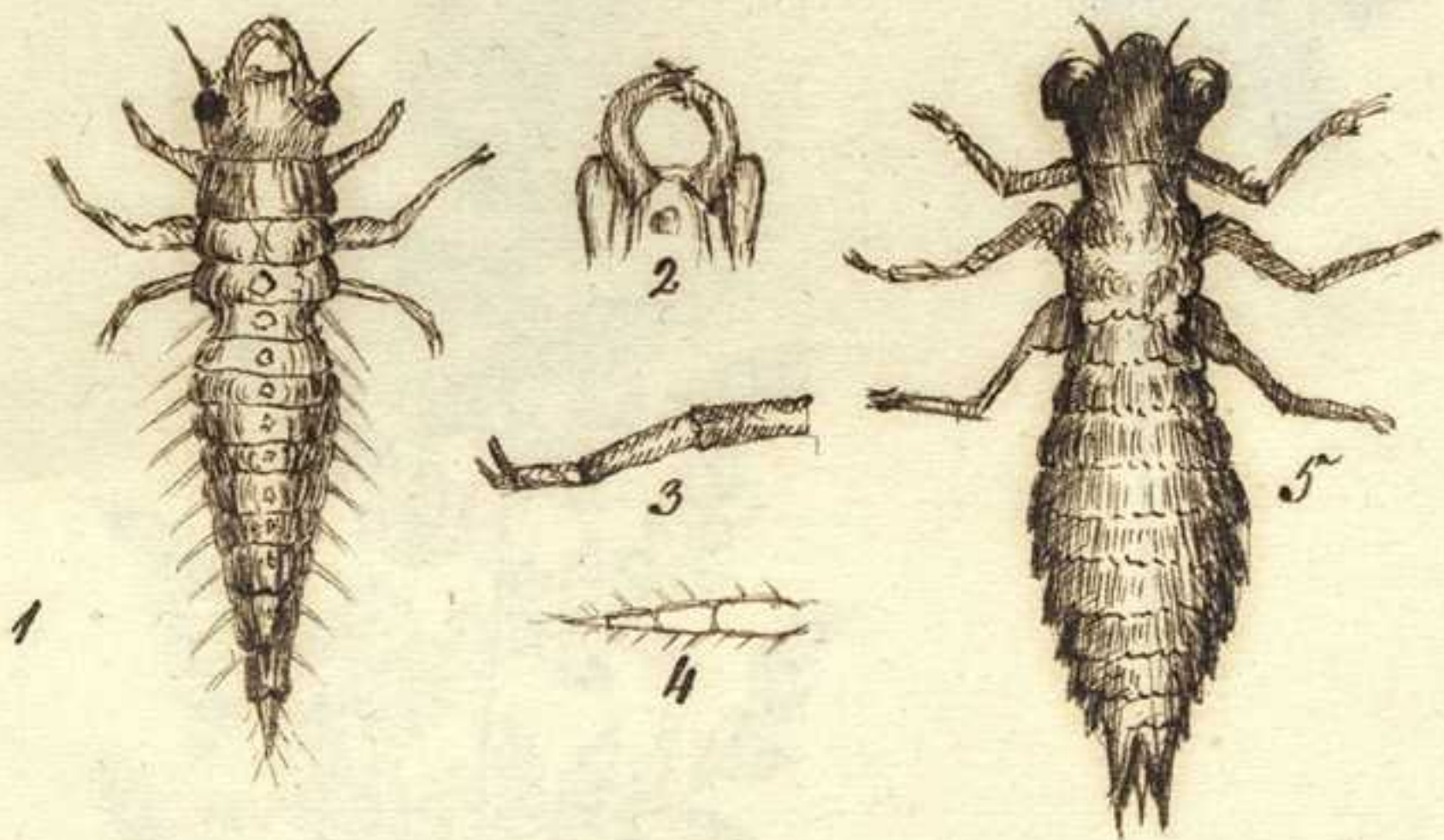


34/0009-3



Larvæ atteræ

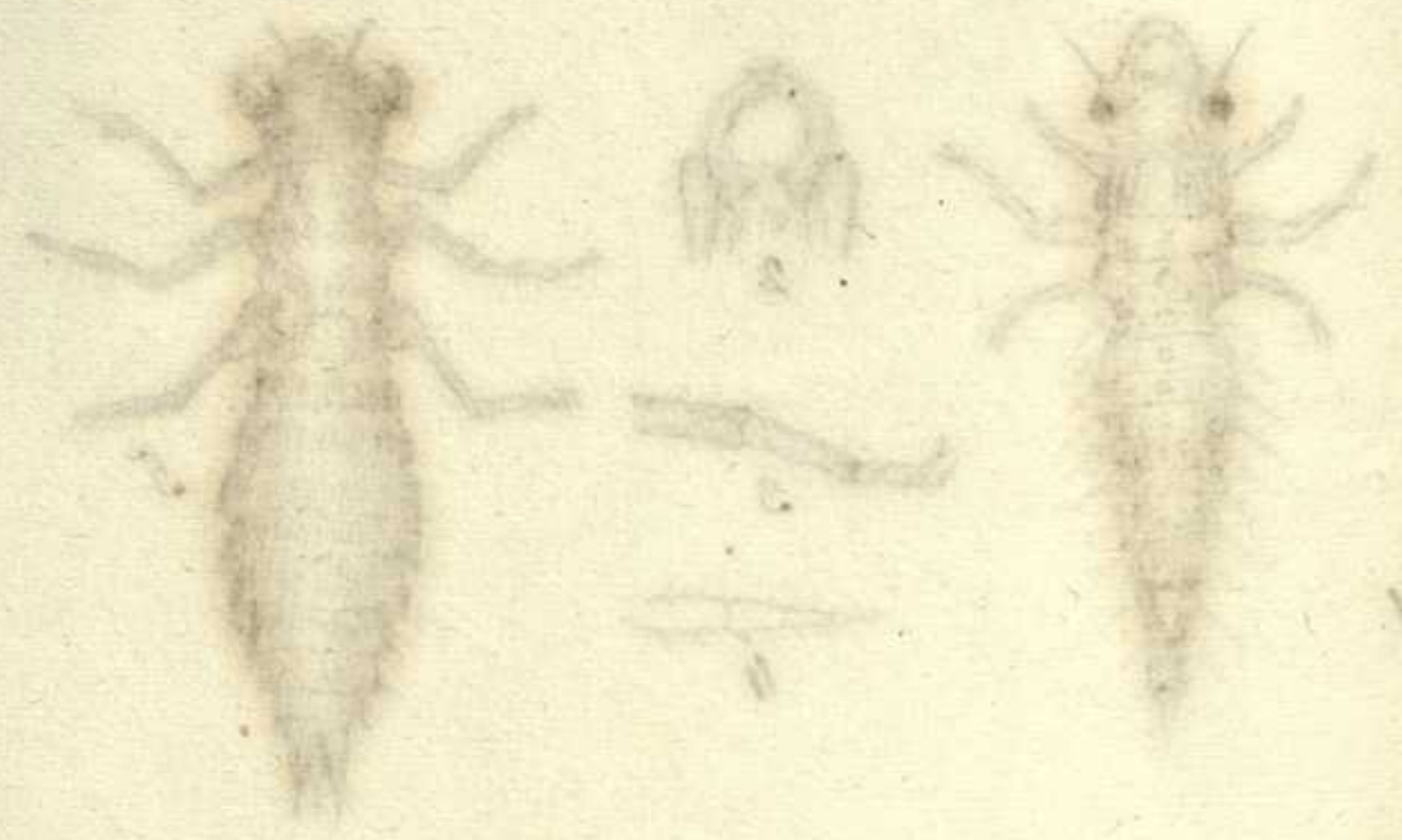
complectens icones aliorum animalium.



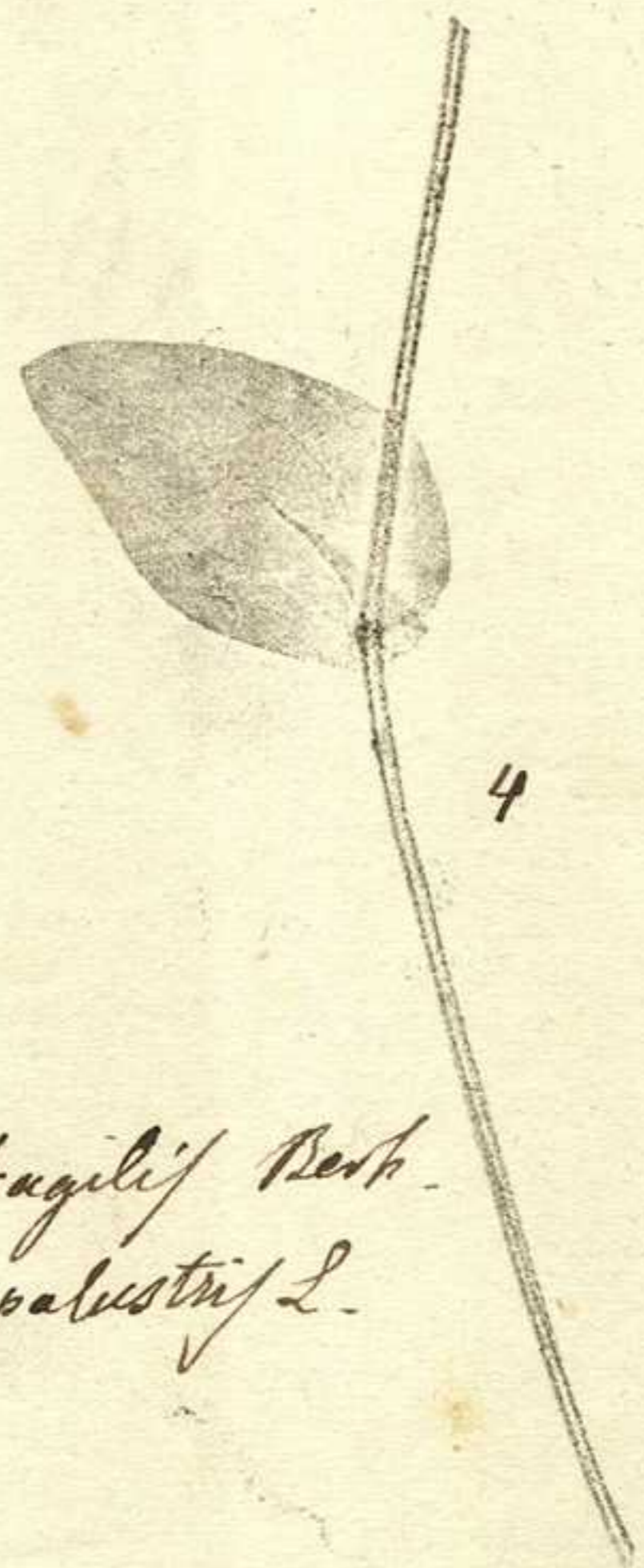
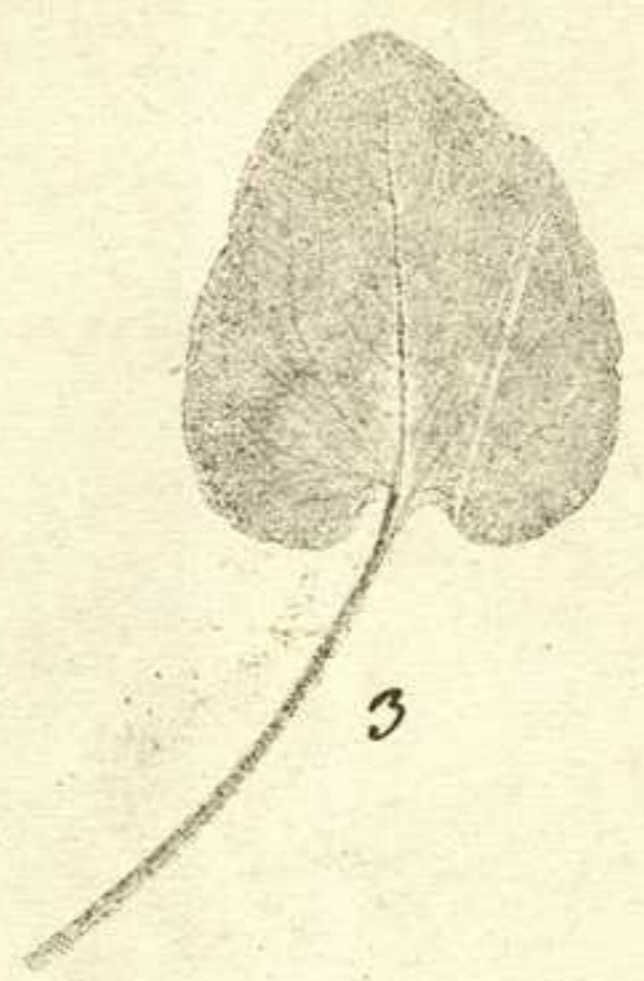
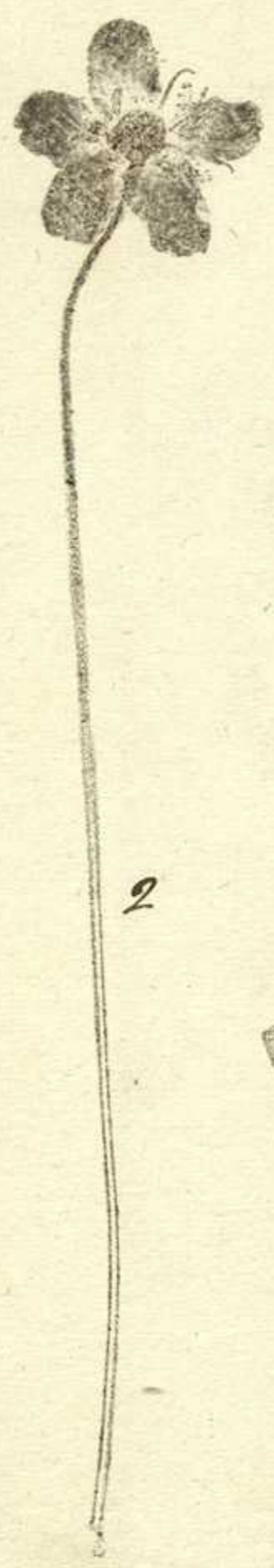
- 1 Larva di un *Dytiscus* (?) ingrandita del decuplo.
- 2 La sua testa veduta di dietro e ingrandita circa 12 volte.
- 3 Una delle zampe mediane ingrandita circa 12 volte.
- 4 Una delle franzie laterali ingrandita oltre 20 volte.
- 5 Larva di un *Hydrophilus* (?) ingrandita del quadruplo.

2000

Amphipoda (Amphipoda) ...



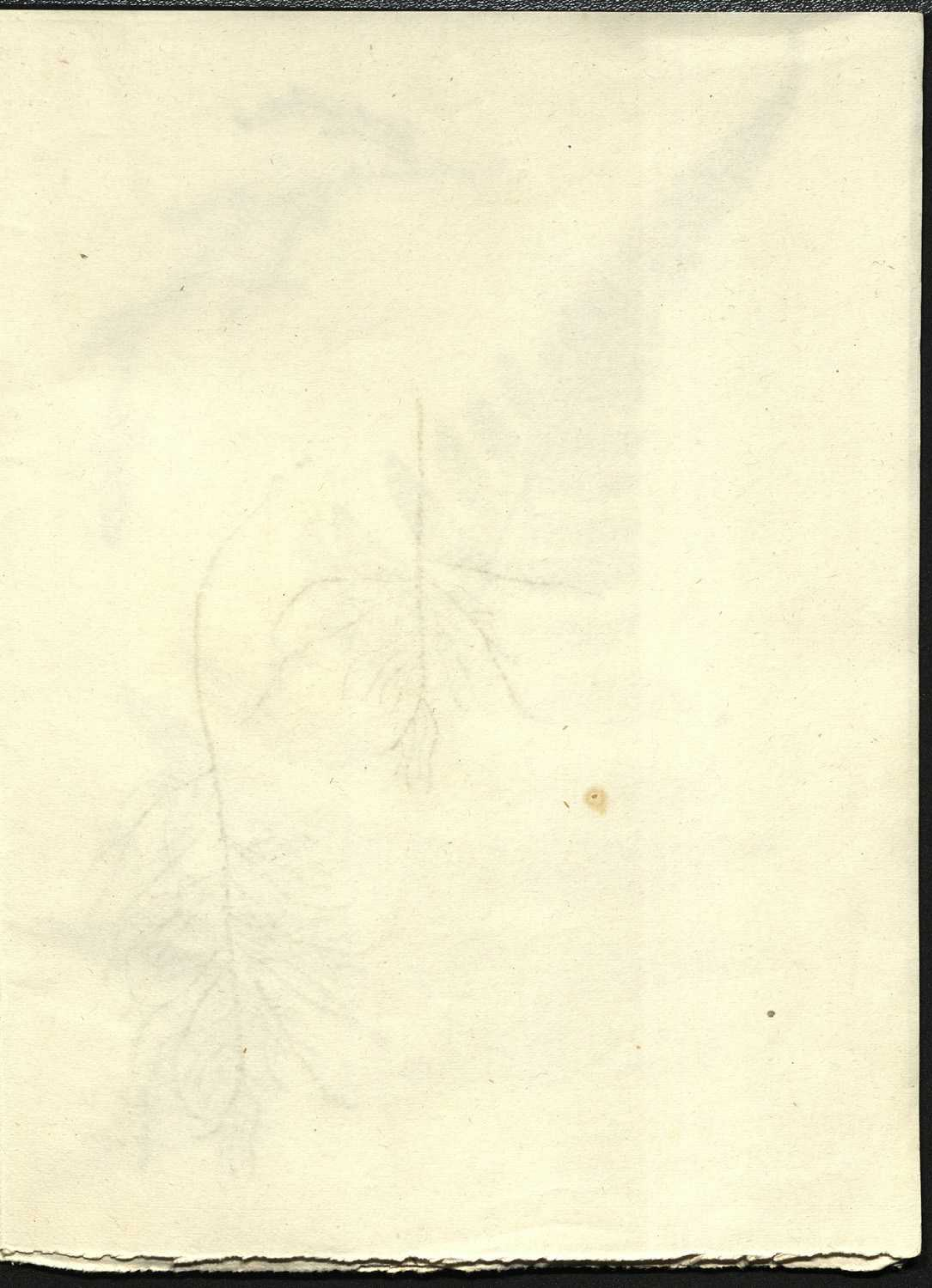
Faint handwritten notes in cursive script, likely describing the specimens or their collection details.



1. *Cystopteris fragilis* Berk.
2. 3. 4. *Parnassia palustris* L.



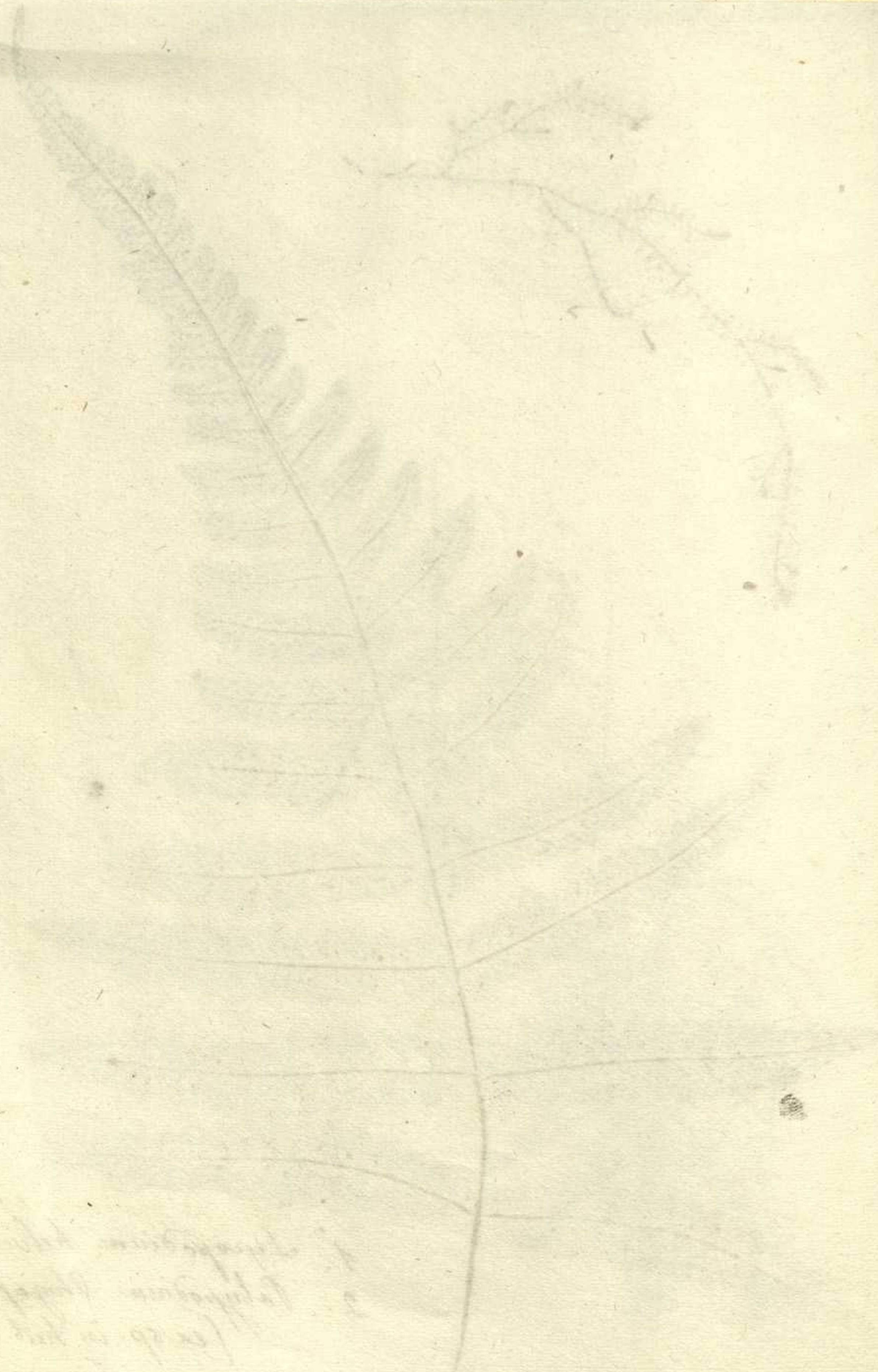
[Faint, illegible handwritten text, possibly a signature or address, located in the lower center of the page.]



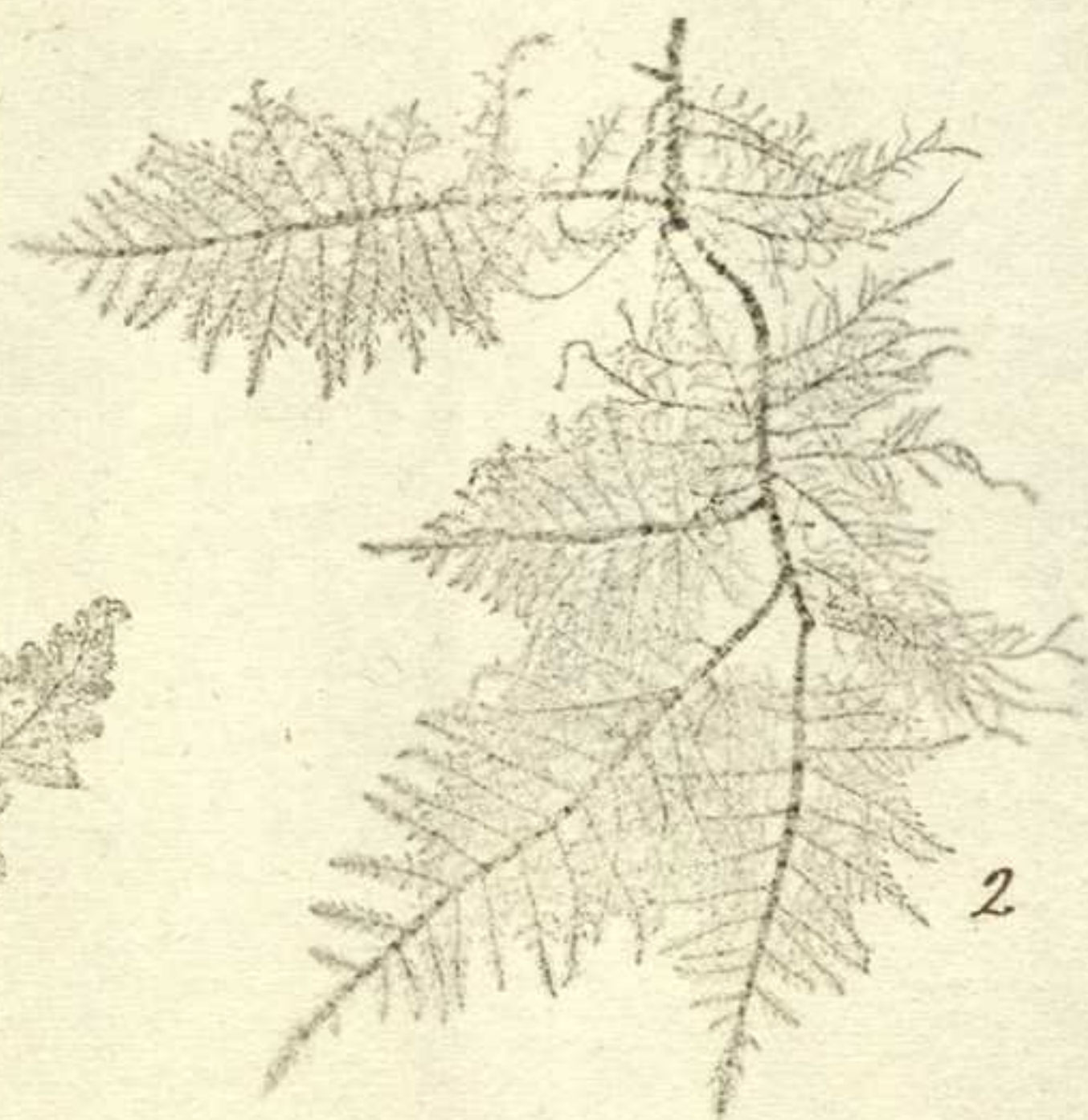




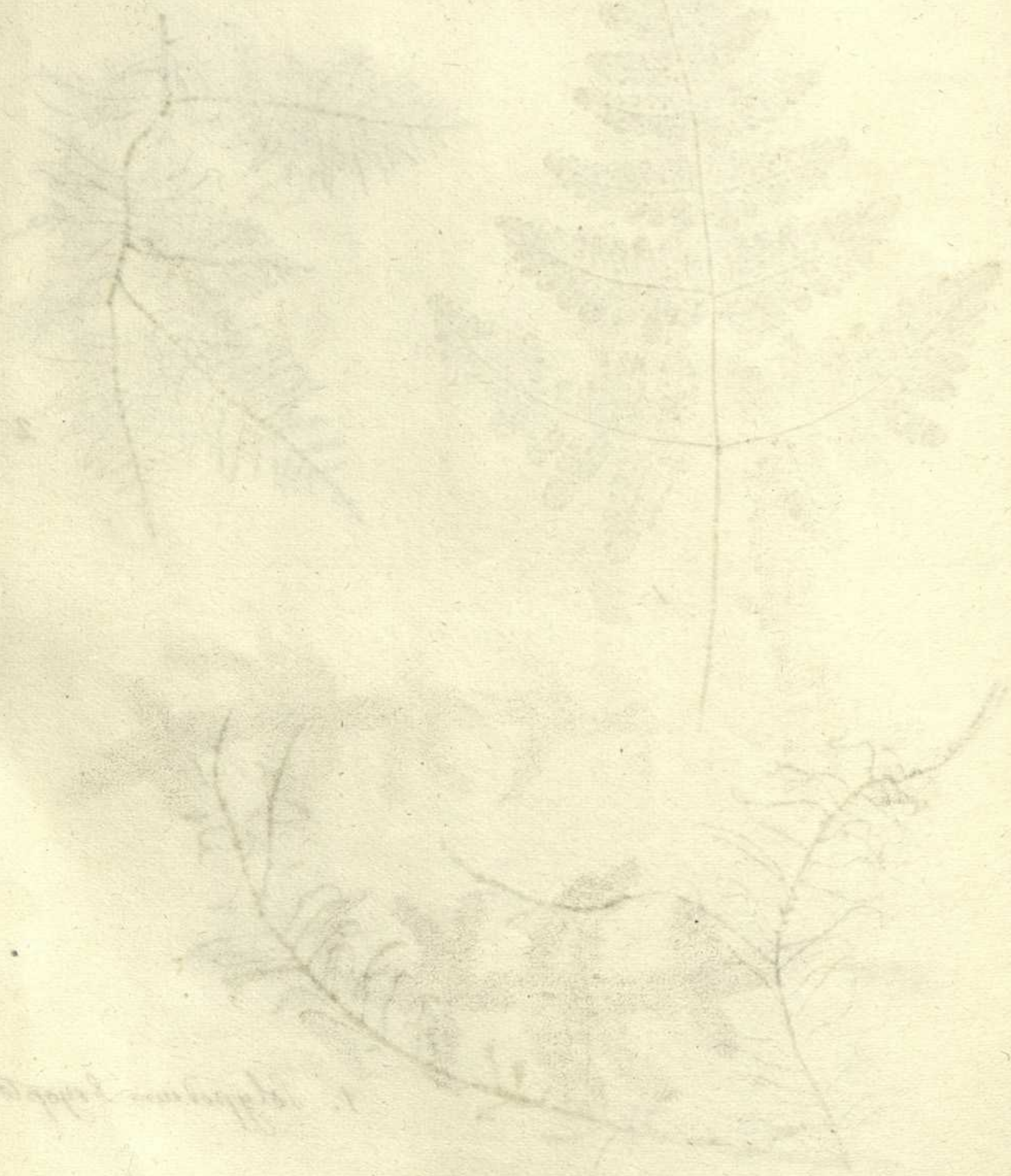
1. *Lycopodium helveticum*
2. *Polypodium thigopteryx*
(ex sp. in herb. Lindberci)



Handwritten notes in cursive script, likely describing the specimens shown in the sketches above.

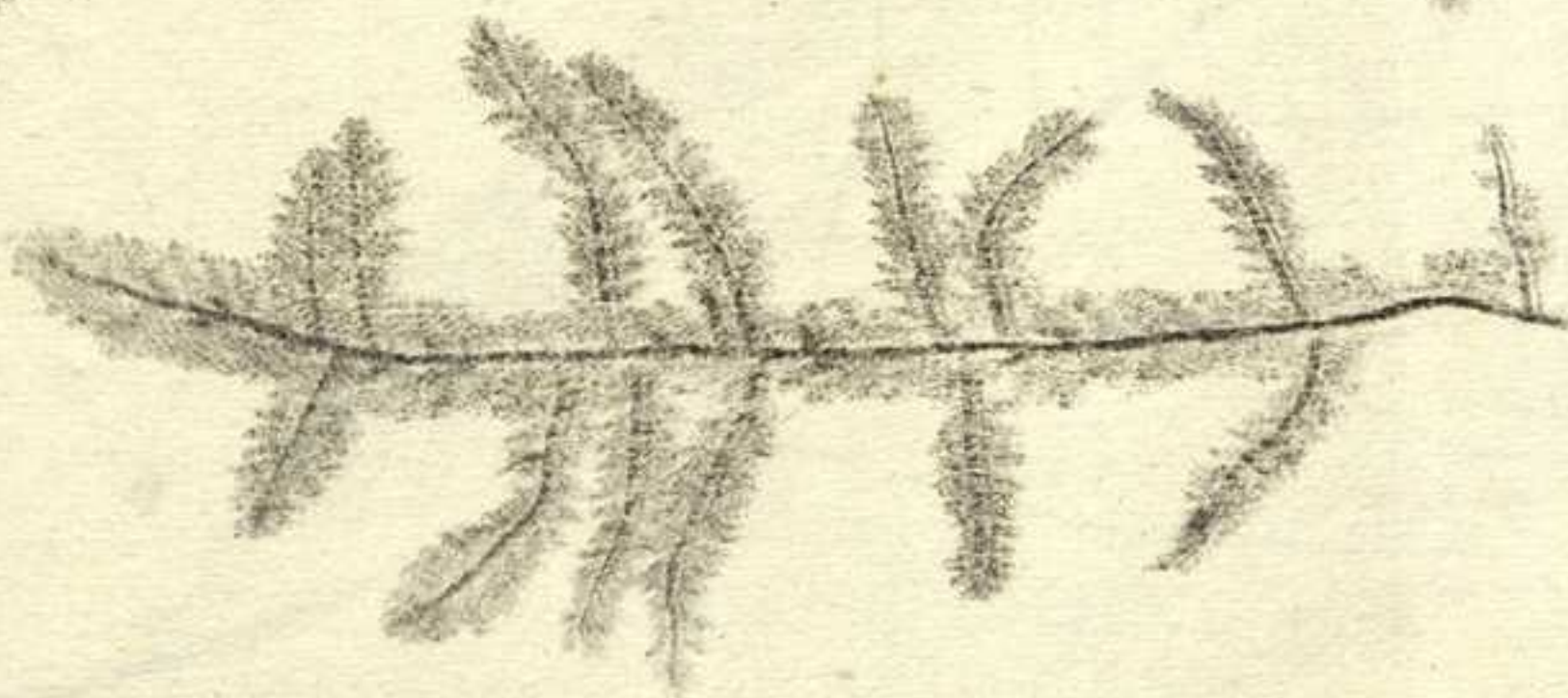
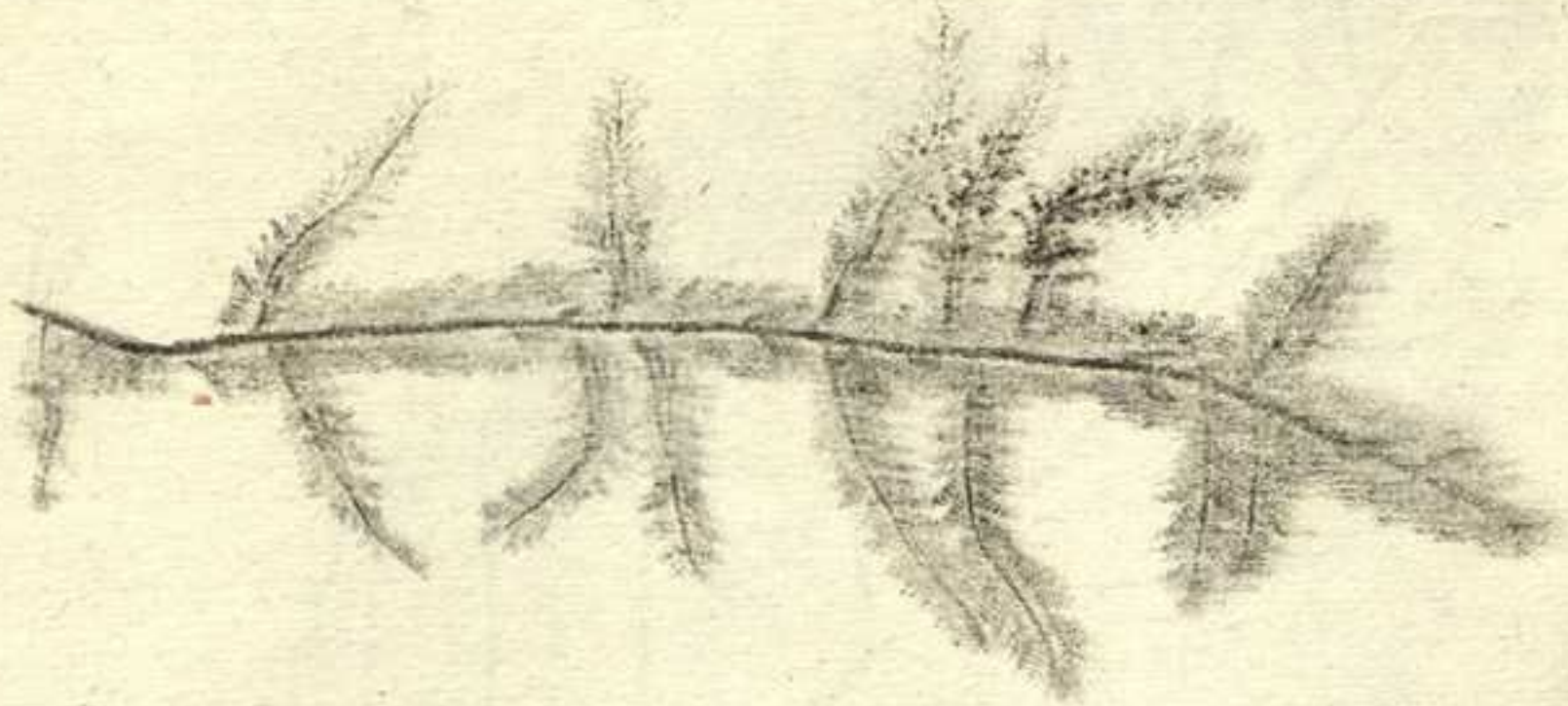
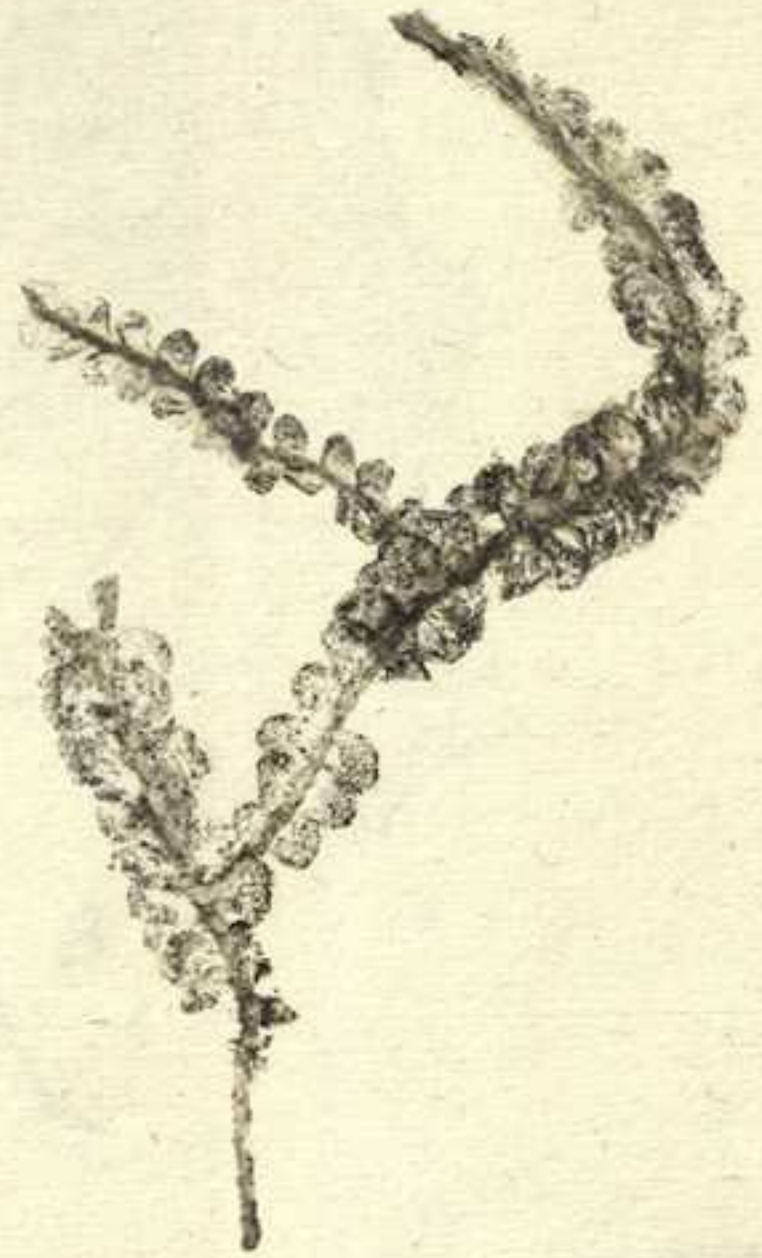
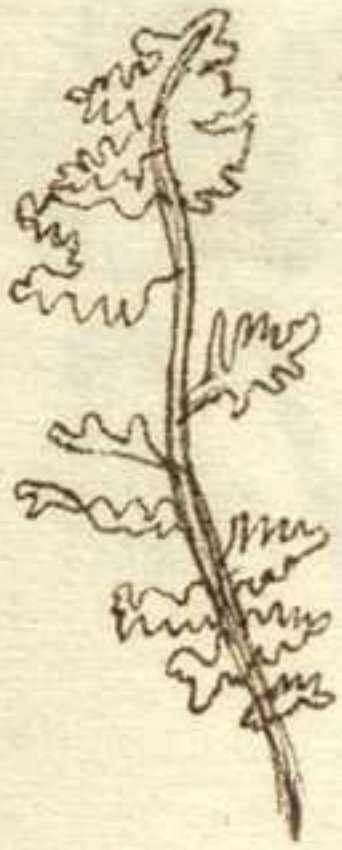


1. *Polypodium Dryopteris*



Faint, illegible handwritten text, possibly a species name or description.

Plantarum minus cognitarum
Icones.



Handwritten text at the top of the page, possibly a title or header, written in a cursive script. The text is oriented horizontally but appears to be written on a page that has been rotated or is otherwise oriented differently. The text is faint and difficult to decipher.



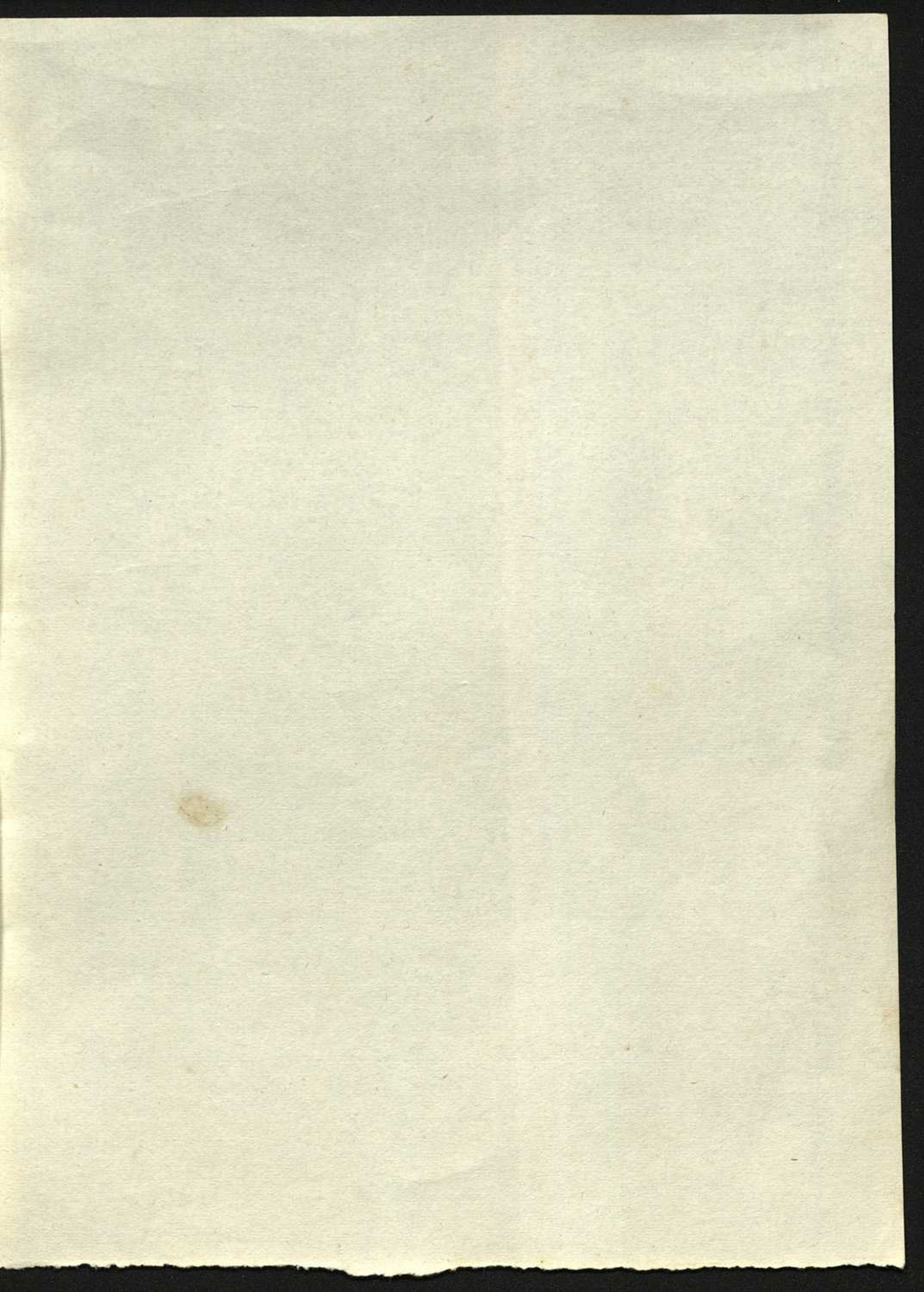
A small, faint handwritten word or label, possibly in red ink, located in the lower left quadrant of the page. The word is difficult to read but appears to be a single word.

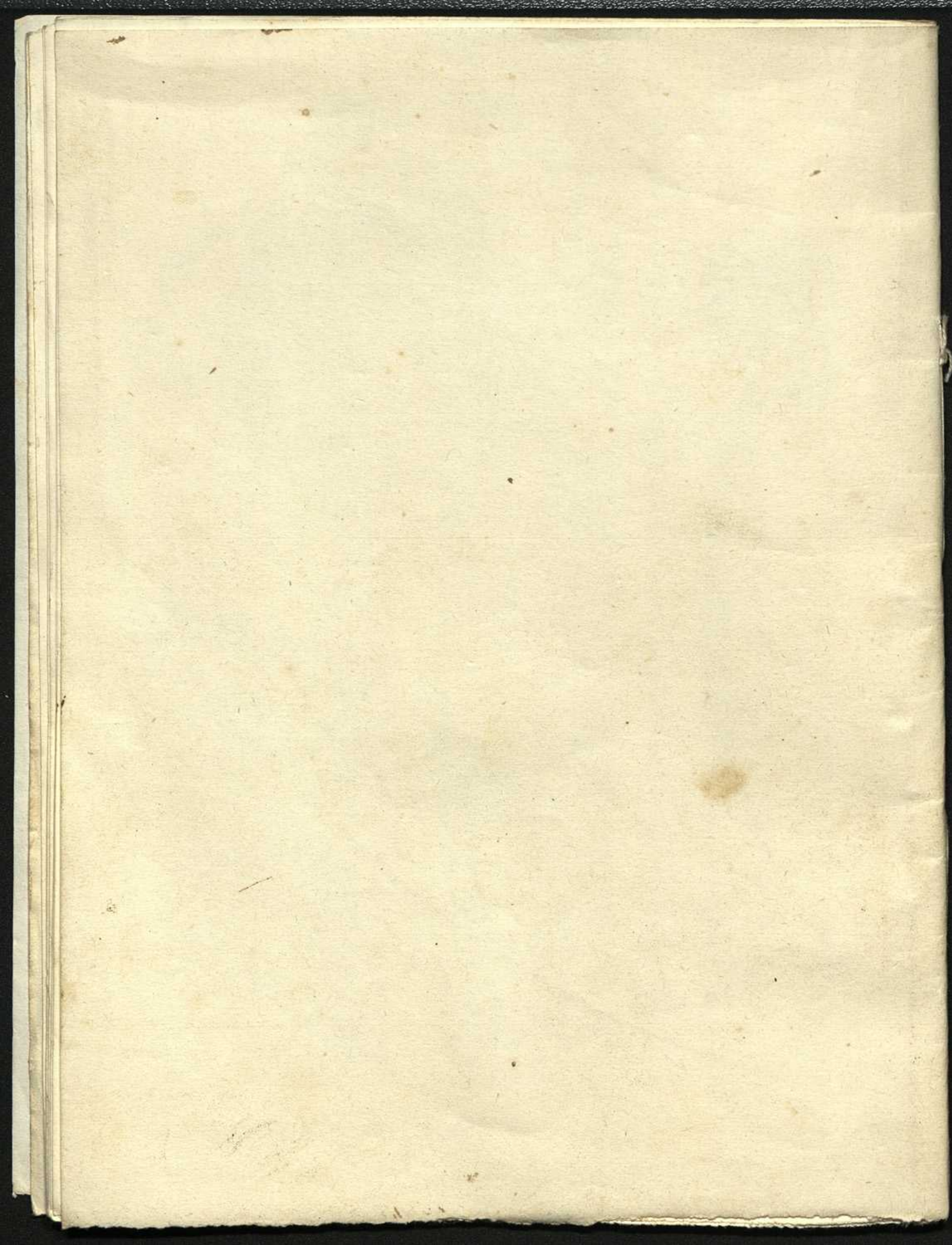


1-2 *Chrysosplenium alternifolium* - (3 *Salvia sclarea*) 4 *Sorbus aria*
 3 *Salvia verticillata* Linn. (Ex specim. in h. bot viso)

(6)
(7)
(8)
(9)
(10)

Faint, illegible handwriting at the bottom of the page, possibly bleed-through from the reverse side.







Amaranthus flavus
Fagetej musta —

34/0009-4-2



Pinnula auricula

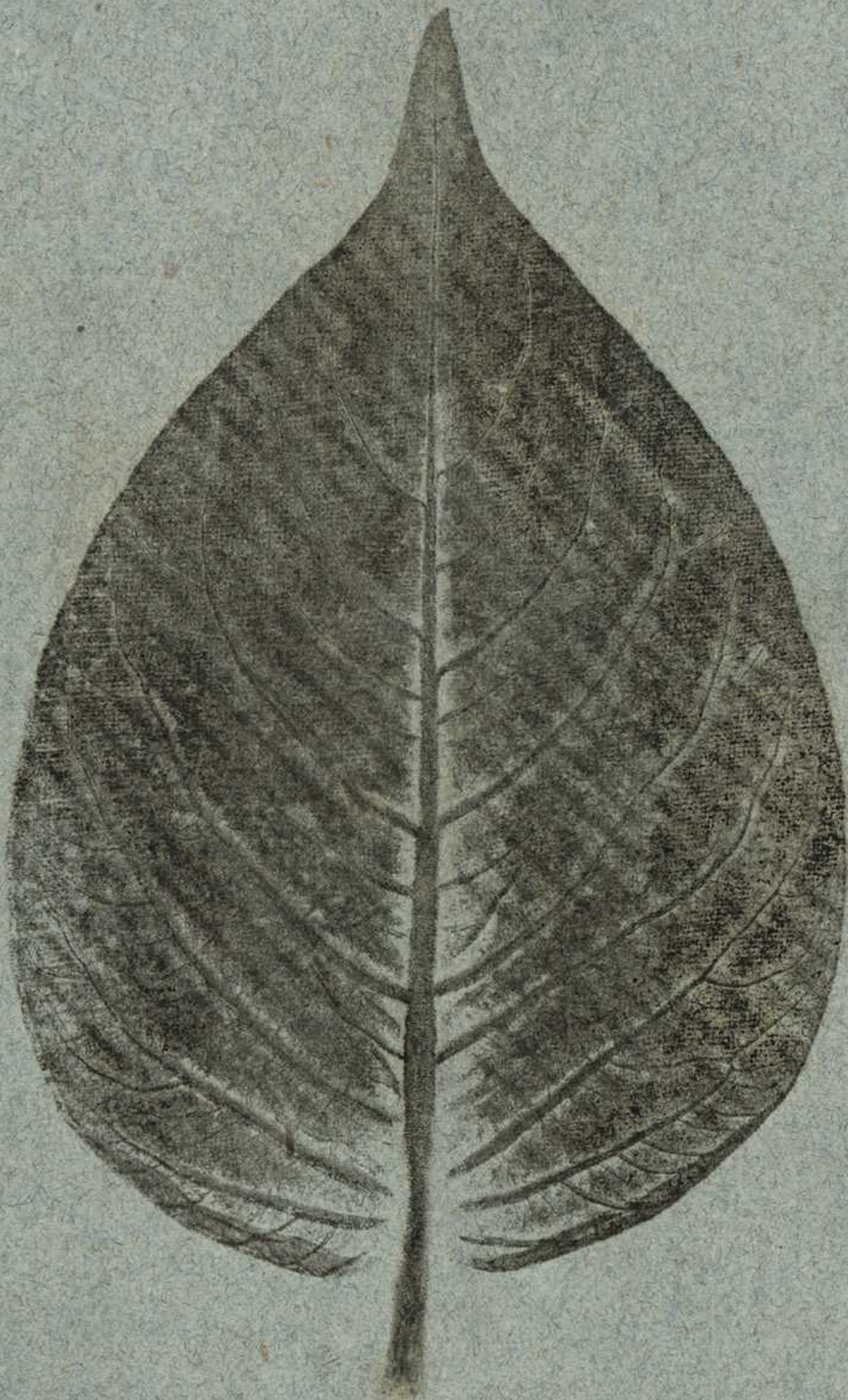


Rosa centifolia

34/0009-4-4



Petroselinum sativum



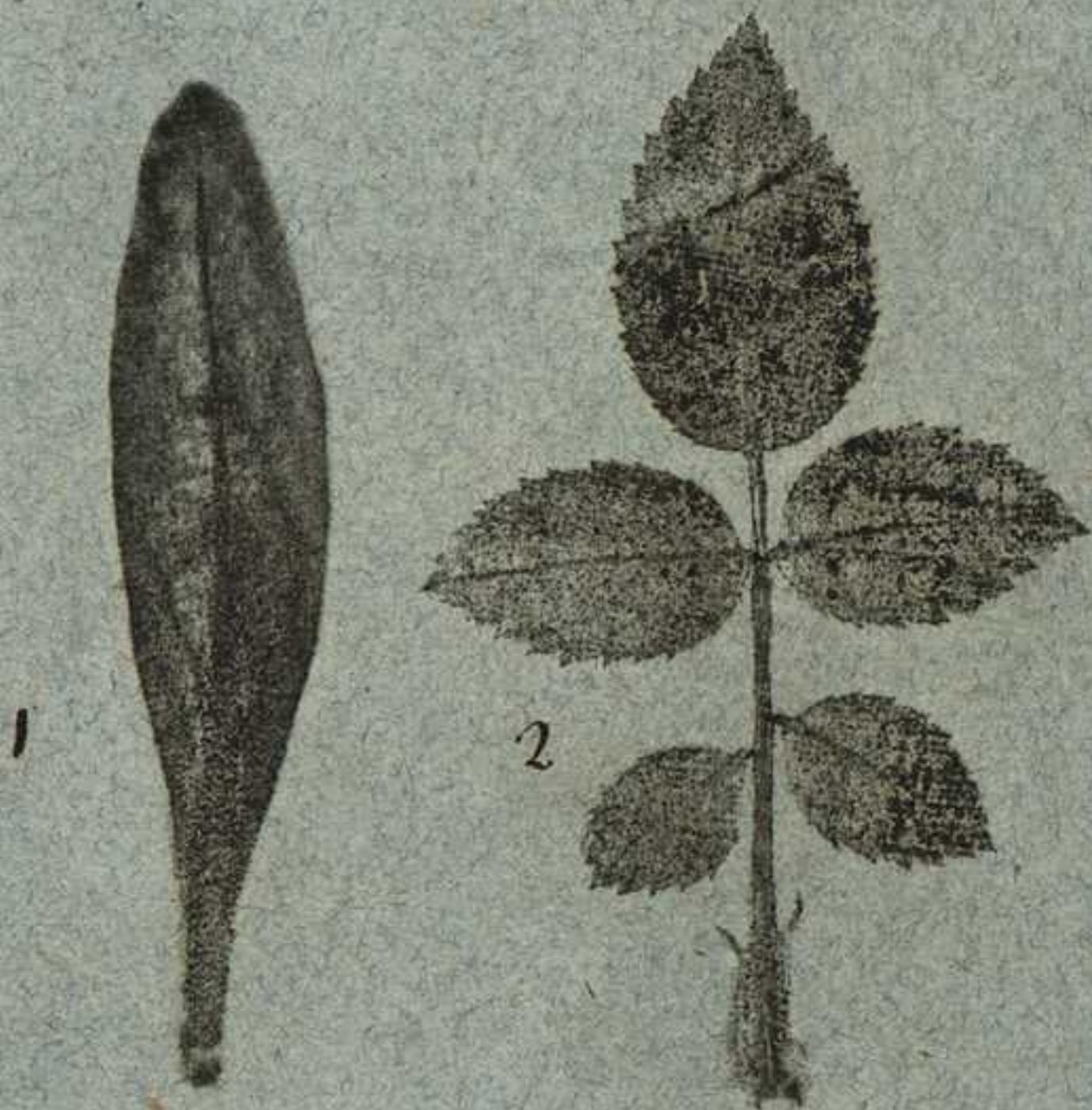
Amaranthus caudatus
corr. *Polygonum orientale*



Philadelphus coronarius



Scabiosa columbaria
var. Scabiosa atro purpurea



1 Cheiranthus 2 Rosa
Cheiri rubrispina)
japonica



1



2

1 *Reseda odorata*

2 *Pelargonium roseum*

34/0009-4-10



Balsamite
Hyoscyamus albus



Delphinium Ajacis



Aloysia citriodora



Viola odorata