

Musci Tarvisini.  
Historia et comparata Descriptio.  
1872  
in Act. Soc. Ven. Trent.

Muschi.

*Sinonimia vernacula.*

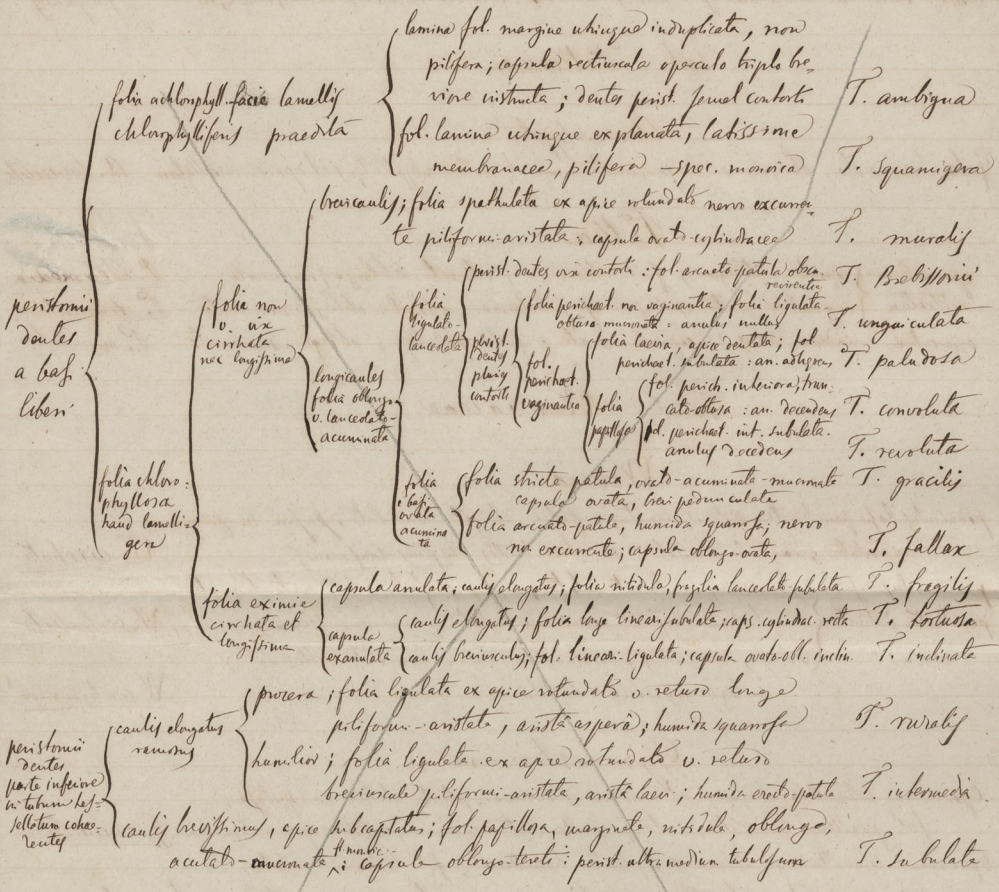
*Insetti e Aracnidi -*

- |                             |  |      |
|-----------------------------|--|------|
| 1. Zentogambe =             | <i>Telus terrestris</i> - Galia - Scolopendra          |      |
| Lecc' agnina -              | <i>Taxos vicinus</i> (Fortuna) coleoptera              |      |
| Stamf' sira =               | <i>Scutigera lineata</i> Lillj                         |      |
| Scorpio europeo =           | Scorpion   |      |
| Ugni' araneidito =          | Ragno, Ràin  |      |
| 2. Lampyrin' splend' =      | <i>Lupariola</i> , <del>...</del>                      |      |
| Carol, larici -             | <i>Strobilium pertinax</i> et <i>lilj fronticornis</i> |      |
|                             | <i>Dermentes lardarius</i>                             |      |
| <i>Lupariola dei fassai</i> | <i>Gyrinus natalor</i>                                 | 879  |
| Tarpansa                    | <i>Melolontha vulgaris</i>                             | 123  |
| « Mosca d'ora               | <i>Cetonia aurata</i>                                  | 1002 |
| Cervo volante               | <i>Lucanus cervus</i>                                  |      |
| Moschin                     | <i>Trichius fasciatus</i>                              |      |
| «                           | <i>Cetonia turca? marmorata?</i>                       |      |
| Famre -                     | <i>Tenebrio molitor</i>                                |      |
| Torcol p. Torcui            | <i>Pyncites Bacchus</i>                                |      |
| Gambareti -                 | <i>Apion pumicearium</i>                               |      |
| Ave. manè -                 | <i>Coccinella septempunctata</i>                       |      |
| Forfeseta -                 | <i>Forficula auricularia, minor</i>                    |      |
| Schiavo                     | <i>Blatta orientalis</i>                               |      |
| Lucchera -                  | <i>Gryllotalpa vulgaris</i>                            |      |
| Griè -                      | <i>Gryllus campestris</i> - Domesticus                 |      |
| Orsaret                     | <i>Gryllus pellucens</i> - Lat.                        |      |
| Lavaletta <del>viva</del>   | <i>Locusta virescens</i> -, <i>remaneva</i> -          |      |
| « di bosk                   | <i>Locusta punctatissima</i>                           |      |
| Vimej salvarego -           | <i>Pentatomia grisea</i> - <i>nigri lineate</i> -      |      |

23322



Tortula



Pleurochaste

Fol. e basi latiore linear. lanceolata, apice serrata, ex quibus cimbata, et  
humida subito recurro-squamifera

P. squarrosa

Dicymodon

Caulis es. pilifera, inferne rubiginosus; fl. syneris v. polygam. ; folia e basi ovata  
laevicaulis subulata; capsula anulata, oblongo-cylindrica; oper. corio-acutum

Caulis es. pilifera, ubique lunde virens, v. cautes; fl. dioici; folia ovato-acutata  
capsula exanulata, oblongo-cylindrica; oper. corio-acutum brev

D. rubella

D. lividus

# Ind. Trichostomaceae

## Circidostely

- |   |                        |
|---|------------------------|
| peristomium (capsula perichata immersa); fructus cladocarpici                 | <i>C. fontinalodes</i> |
| completum (capsula alte exorta); fructus acrocarpici                          | <i>C. nipanicum</i>    |
| peristomium pinnatifidum, tuberculatum; capsulae exorta; fructus cladocarpici | <i>C. aquaticum</i>    |

## Trichostomum

- |   |   |   |
|---|---|---|
| folia elongata<br>v. oblonga<br>apice rotundata           | folia coriacea, distichetia, in sicco crispata, nitida, flex. monocii;<br>capsulae anulo lata: persist. dentes uniseriati | <i>T. anomelum</i>  |
| folia non<br>coriacea<br>monostichetia                    |   | folia apice caudiculata cucullata, obtusa, mucronulata<br><i>T. crispulum</i> |
|   | folia arcte ligulata, obtusa, non cucullata<br><i>T. tophiacum</i>  |   |
| folia e basi<br>amplexantia ovata<br>lanceolata-attenuata | fl. divisi; planta laevide s. ferruginea et flavida viridis<br>fl. monocii; planta insigniter glaucescens                 | <i>T. rigidulum</i>   |
|   |   | <i>T. glaucescens</i>   |

## Leptotrichum

- |  |   |
|--|---|
| florae monocii; bracteale; folia apiculata-subulata; pedunculus flavescens | <i>L. pallidum</i>  |
| florae divisi  | longicaule, inferne ferrugineo-tomentosum; folia elongata-subulata<br>non excavata apice exalata, pinnis secundatis<br><i>L. flexicaule</i> |
|  | bracteale; folia lanceolata-attenuata non ad apicem alata<br><i>L. tortile</i>  |



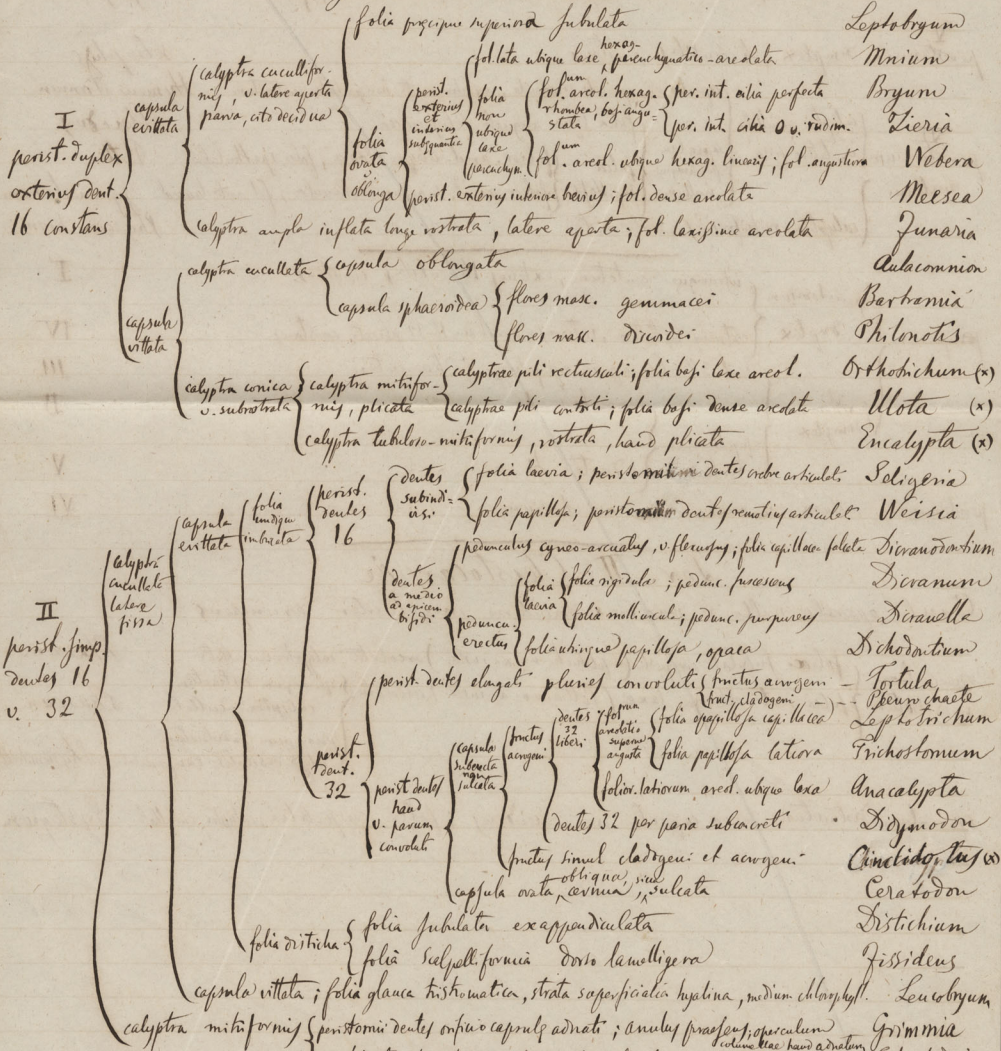
# Cohors II Acrocarpi

Fructus terminales, v. ob plantarum innovationes, pseudolaterales.

## Sex. I Stegocarpi

Capsula parte sua superiore operculo circumscisso dehiscens

### Genera



(+) Horum generum species nonnullae persist. simplici utuntur v. omnino carent.







Musci tarvisini enumerati

atque  
tabulis dichotomicis strictim comparateque descripti

a  
Dr. P. A. Saccardo.





# Species

Cohors I Peurcarpeae (C. Müll.)

Ser. I Lamprophyllae (D. Mbs.)

Trib. 1. Fontinalaceae (Schimp.)

Gen. Fontinalis (Dill.)

Folia late ovata, ~~acutiuscula~~ <sup>subtusculis</sup> ~~profunde concava-carinata, adulegata~~  
caulis ramisque principibus exsertite hirsutus *F. antipyrretica* L!

Trib 2. Ampelothoeae (D. Mbs.)

Gen. Thamnium B. Schimp

<sup>subtusculis</sup> caulis basi subnudus, apice densiusculus; folia ovata acutata concava;  
capsulae ovatae inclinatae, operculo rotato *T. Allopecurum* 2

Gen. Rhynchosyrium B. Schimp emend.

- |                 |                 |   |   |   |
|-----------------|-----------------|---|---|---|
| flos<br>divisi  | pedunculus<br>2 | costa tenuis, brevissima, bipida                              | rami puberissimi; folia cordato-lanceolata<br>acuminata vix fulcata, nervis $\frac{1}{2}$ | R. depressum 7  |
|                 |                 |   |   | costa elongata<br>simplex                                     |
| pedunculus<br>3 | flos<br>memori  | folia ovata, concava, apice abrupte piliformi-cuspidata       |   | R. strictum 6   |
|                 |                 | folia ovato-triangulata, acuta, apice non piliformi-cuspidata |   | R. Vaucherii 3  |
| pedunculus<br>3 | flos<br>memori  | folia lanceolata subhirsuta integris                          |   | R. proclongum 4   |
|                 |                 | folia ovata   | nervis sub apice deflexis; folia planiuscula serrulata<br>late ovata acuta                | R. Lorallum 11  |
|                 |                 | retundata   | nervis<br>sub<br>apice<br>deflexis  | folia profunde concava, ovata, breviter<br>obtusius acuminata |
| pedunculus<br>3 | flos<br>memori  | folia lanceolata, acuminata, subobovata; nervis $\frac{1}{2}$ | folia concaviuscula, ovata longe<br>acuminata   | R. murale 9   |
|                 |                 |   |   | R. confertum 8  |
|                 |                 |   |   | R. Teesdoli 12  |

## Hylonomium

- |   |   |  |                |    |
|---|---|--|----------------|----|
| folia ovata<br>apice rotundate<br>mutica v. apiculata<br>paraphyll. nulla | } | caulis pallidus; fol. apice rotundate brevif. apiculat; nervif $\frac{1}{2}$ | H. purum       | 13 |
|   |   | caulis tuberosus; fol. apice rotundate mutica, brevif. 2-3 nervif            | H. Schroberi   | 14 |
|   |   | caulis in planum bipinnato-rampif; fol. ovata, flex. curvif.                 | H. Splandey    | 15 |
|   |   | caulis (fol. imbr. breviter curvif. apice rotundate)                         | H. Oakesii     | 16 |
|   |   | vage rampif (fol. squarrosif), incurv. subulate, vix serrulate               | H. beviria     | 17 |
| folia ovata<br>v. cordate<br>acuminata<br>v. carpiodate                   | } | paraphyll. (rudif.); folia valde rugosa, adpresse secunde falcate            | H. rugosum     | 18 |
|   |   | paraphylla (nulla) folia triangular. longe acuminata, erecto-squarrosif      | H. hijetum     | 19 |
|   |   | folia ovata longe acuminata, haec trif. squarrosif                           | H. squarrosif. | 20 |

## Ptilium Lall.

Caulis procerus, elegans bipinn. pinnatis profundis; folia ovato-subulata, secunde falcata;  
 capsula oblongo-cylindracea, incurva; opercul. unicum, muscul. P. ovata *estrop.* 21

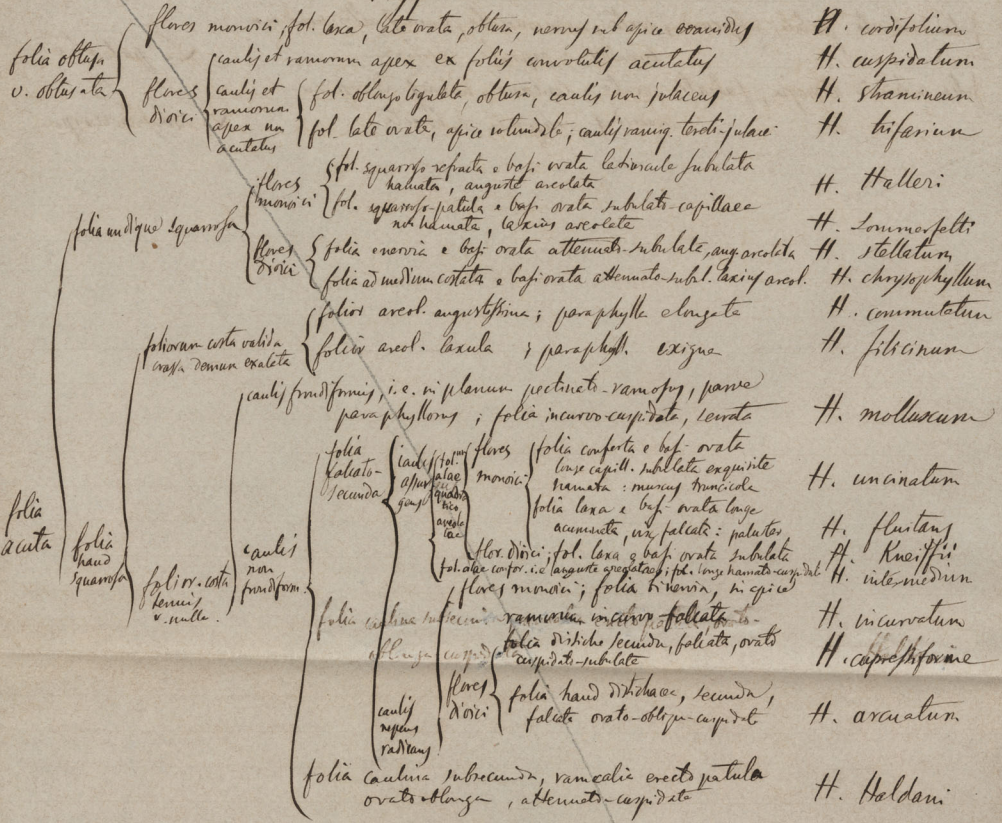
## Brachythecium

- |                   |   |  |  |               |
|-------------------|---|--|--|---------------|
| flores<br>monovii | } | pedunc. laevif; folia ovata, longe acuminata-subulata          | B. latifolium  | 23            |
|                   |   | pedunc. <sup>mutica</sup> <sub>robustum</sub>                  | tenuillum; folia e basi angusta longe ovata-cappif.<br>data, haud plicata, in variet. secunda, planiuscula | B. velatum    |
|                   |   | pedunc. <sub>robustum</sub>                                    | robustum; folia late ovata-acuminata, serrif.<br>lata, sive subplicata, haud secunda                       | B. rotundatum |
|                   |   | pedunc. <sub>robustum</sub>                                    | pedunc. superne <sub>robustum</sub> ; folia ovata superne acuminata-curvif.                                | B. propuleum  |
| flores divii;     | } | folia ovata-acuminata, eximie falcata; capsula ovata inclinata | B. tuberosum   | 22            |

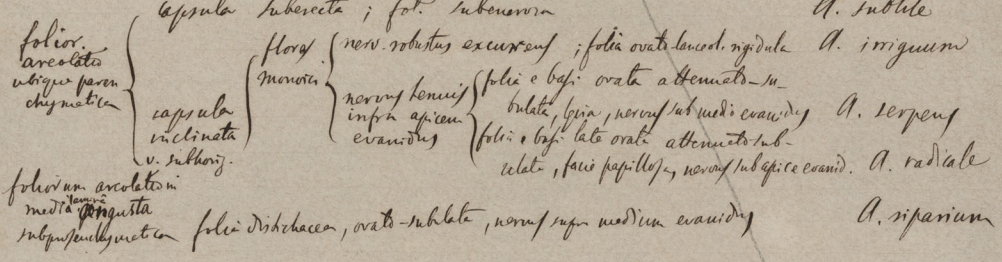
## Anthylogrum

- |                 |   |   |  |                  |
|-----------------|---|---|--|------------------|
| oblongif. folie | } | flores monovii; folia laeva, late ovata, obtusa, nervif oblique exaristif     | A. cordifolium   |                  |
|                 |   | flores divii  | fol. oblongo-ligulate, obtusa; caulis non julaceus   | A. stramineum    |
|                 |   | fol. late ovata, apice rotundate; caulis & rami tereti-julacei                | A. trifarium   |                  |
|                 |   | fl. divii; folia ovato-curvif. date hamata                                    | folior. areol. angustissima; paraphyll. elongata   | A. commutatum    |
|                 |   | flores monovii; folia ovata lanceolata, apice un. hamata                      | folior. areol. laxula; paraphyll. crispata   | A. plicatum      |
| acutifolia      | } | species proceriorif<br>folia longissima<br>squarrosifoliate<br>areol. angusta | flores monovii   | A. virgatum      |
|                 |   | nervif. sub. apice exaristif  | folia compta e basi ovata<br>longe capsulae subulate,<br>exquisite hamata, lamina            | A. uncinatum     |
|                 |   | nervif. sub. apice exaristif  | folia laxa e basi ovata longe<br>acuminata, vix falcate, ped.                                | A. fluitans      |
|                 |   | fol. areol. imbricate punctata  | nervif. sub. apice exaristif   | A. nigrum        |
|                 |   | folia late imbricata, e basi ovata superne subulate, nervif $\frac{1}{2}$     | nervif. sub. apice exaristif   | A. Kneipii       |
|                 |   | folia squarrosifoliate, e basi subulata subulate nervif $\frac{1}{2}$         | nervif. sub. apice exaristif   | A. chrysophyllum |
|                 |   | folior. nervif. areolatus<br>capsula inaequalif.                              | folia e basi ovata attenuata subulate, gen.<br>nervif. sub. medio exaristif                  | A. serpens       |
|                 |   | folior. nervif. areolatus<br>capsula inaequalif.                              | folia e basi late ovata attenuata subulate<br>facif. papillato, nervif. sub. apice exaristif | A. radiale       |
|                 |   | folior. nervif. areolatus<br>capsula inaequalif.                              | folior. nervif. areolatus<br>capsula inaequalif.   | A. subtile       |

# Hypnum



# Amblystegium





*Linnaeus*

*Folia imbricata, patula, subpinnata, ovata, concavivittata, nervis altera medianis*

*crassis; capsula recurva*

*L. palustre*

*Folia imbricata adpressa, falcata, ovata, concava, nervis ad apicem*

*e*

*crassis; capsula subrecta*

*L. subplacerosperma*

*[Faint, mostly illegible handwritten notes and bleed-through from the reverse side of the page.]*

## Cylindrothecium

- fl. nuda; <sup>caulis</sup> <sup>iniquit.</sup> <sup>tristis</sup> <sup>caulis</sup> <sup>regul.</sup> <sup>pinato-ramosus</sup>; folia ovata-apiculata  
 fl. divisi; <sup>caulis</sup> <sup>regul.</sup> <sup>pinato-ramosus</sup>; folia ovata-obtusa
- C. clausenianum  
C. concinnum

## Antitrichia

- caulis prolixis pinato-ramosus; folia ovata-acuminata; pedunc. breviss., curvi, caps. ell. recte  
 opac. concinnum
- A. curtipendula

## Cryphaea

- Truncata; caulibus semi-pinato-ramosis; fol. densa, ovata-acuta; capsulae subrotundae, subimbric. C. heteromalla

## Pterigynandrum

- Rami <sup>opac.</sup> <sup>obtusati</sup> <sup>filiformes</sup>, subnervi; folia ovata-acuta, serrata, inf. papillosa
- P. filiforme

## Leucodon

- Rami subfalcati; folia, ovata-acuminata, integerrima, enervia, sulcata
- L. sciurorum

## Ser. II Thuidiaceae

### Thuidium

- |  |   |  |  |                                |
|--|---|--|--|--------------------------------|
| folia compressa  | } | caulis <sup>bi-tri-pin-</sup> <sup>ato-ramosus</sup>   | caulis tri-pinato-ramosus; folia suboblonga, utrinque papillosa; folia perichaet. super. fimbriata | T. lanarivinum                 |
| papilloso-sulcata  |   | caulis <sup>bi-pin-</sup> <sup>ato-ramosus</sup>   | caulis bi-pinato-ramosus; folia suboblonga utrinque magis papillosa; perichaetalia haec fimbriata  | T. delicatulum                 |
| folia sublaevia, ovata-acutata; caulibus vix ramosis; ramis scandentibus, filiformibus |   | caulis <sup>dupliciter</sup> <sup>pinato-ramosus</sup> ; ramis squatis, foliis late ovato-acuminatis <sup>sub</sup> <sup>rotundatis</sup> , perichaetaliis <sup>dentatis</sup> |  | T. abietinum<br>T. catenulatum |

### Leskea

- fl. nuda; caulibus <sup>opac.</sup> <sup>vix</sup> <sup>vix</sup>; folia ovata-acuminata, papillosa, costata, integra
- L. polycarpa

### Anomodon

- |   |   |   |   |                               |
|---|---|---|---|-------------------------------|
| folia humida undique recurvo-squamifera, ovata-ligulata; nervis $\frac{1}{2}$                               | } | caulis <sup>ovata</sup> <sup>ramosus</sup> <sup>conformis</sup>   | fol. ovata-ligulata obtusa <sup>capitata</sup> <sup>varicillata</sup> | A. listii                     |
| folia laevia secunda, humida non recurvo-squamifera, nervis subopac. <sup>caulis</sup> <sup>conformis</sup> |   | caulis, cum ramis <sup>normaliter</sup> <sup>obtusatis</sup> , in <sup>fructu</sup> <sup>decurvatis</sup> | fol. ovata-ligulata acutiuscula: caps. exaristata                     | A. viticulosa<br>A. abnormata |

*Pagiethes*

foliorum <sup>nitentium</sup> arcuatis	} fol. ovato-lanceolata, subulata, subfoliata, perichastidia 2-naria	<i>P. incurvatum</i>
perangusta		<i>P. filisicam</i>
folior. subopposita	} fl. divisi; fol. complanata-subulata, ovato-lanceolata; areol. laxa	<i>P. sylvarum</i>
areol. laxa		<i>P. denticulatum</i>

Tribo. ~~Stoethecae~~  
*Neckera*

capsula perichastidii immersa	} perist. extensum intumescens squarrosa; folia plana ovata-retundata costata	<i>N. pinnata</i>
capsula emersa		<i>N. crispata</i>
longis pedunculata		<i>N. pumila</i>
		<i>N. complanata</i>
		<i>N. trichomanes</i> Hartm.

*Climacium*

caulis basi subnudus apice anguste ramisus, dendroideus; folia undata ovato-  
apiculata; capsula erecta, hymenitica ovata elongata, oper. convexo-attenuat. *C. dendroideus*

*Hemalothecium*

capsulae pedunculatae raris; rami incurvi	folia perich. hujus caps. date; calyptra basi barbata	<i>H. sericeum</i>
capsulae pedunculatae laevibus; rami rectiusculi	fol. perich. abrupte cuspidata; calyptra glabra	<i>H. phillypceanum</i>

*Orthothecium*

fl. divisi; rami fasciati; fol. folio-repouente nitida, ovato-acuminata, pilis erecto-petiol. *O. rufescens*

*Pylaisia*

fl. divisi; rami caespit. subsecundi; fol. sericeo-ovata ovato-lanceolata subulata, rami subsecundi, non pilati *P. polyantha*

*Boothecium*

rami, turgidi; subsecundi; folia ovata, ovato-guadrata concava; capsulae oblonge erecte *B. Myurum*

Tortula

- peristomii dentes a basi liberi

  - folia chlorophyllosa, dorsum ~~concolori~~ lamellis chlorophylliferis puncta

    - lamina marginis utrinque induplicata, non pilifera

      - capsula recta, operculo quadrifido breviori, deorsum plerumq[ue] curvata T. anthyra
      - capsula recta, operculo e dimidiis breviori, deorsum plerumq[ue] curvata T. rigida
      - capsula obliqua, operculo e dimidiis breviori, deorsum via curvata T. aloides
    - lamina utrinque explanata, latissima non bracteosa pilifera T. squarrosa
  - late striato-v. striato-lanceolatis

    - folia chlorophyllosa; species minorca, folia bipectata, ex apice rotundata, setarum piliferarum aristata, nectarem benelem lateri T. muralis
  - folia chlorophyllosa oblonga, v. brevis lanceolata, submutica fl. divisi

    - submutica

      - unguiculatae
  - peristomii dentes a basi liberi

    - folia chlorophyllosa oblonga v. lanceolata, submutica, v. carinata fl. divisi

      - submutica

        - convolutae
    - folia brevis lanceolata, flexuosa, auriculata, ciliolata, crispata, peristomii lanceolata submutica

      - testanae

- peristomii dentes parte inferiore in tubum serrulatum lobis reutes

  - caulis humilis fl. divisi

    - fol. oblongo-spatulata limbo mucronata; capsula elongata subcurvata

      - T. sulcata
    - minorca, folia pile laevi

      - T. laevipila
    - folia pile rubeo-rubra

      - T. muralis
    - folia pile hyalina

      - T. intermedia
  - caulis ciliatus inde dichotomus ramis

    - fl. divisi

      - folia pile hyalina

        - T. fallax
- unguiculatae

  - folia e basi breviter puncta acuminata, acute, humida ex parte, capsula solida, plerumq[ue] cylindrica

    - T. fallax
  - folia oblongo-lanceolata, latiuscula, humida, capsula mollis, plerumq[ue] cylindrica

    - T. unguiculata
  - folia ovali-lanceolata, majora, capsula mollis, plerumq[ue] cylindrica

    - T. gracilis
- convolutae

  - folia brevis lanceolata, acute, apice serrulata, plerumq[ue] placida, peristomii cognatae, capsula peristomii inf. umbellata, integumentum omnino mucronis ciliata, peristomii ciliata, capsula pedicellata, basi umbellata

    - T. placida
  - folia lanceolata obtusa, axillata, peristomii ciliata, peristomii ciliata, capsula pedicellata, basi umbellata

    - T. revoluta
  - folia bipectata lanceolata, acute integra, alij inferius reflexa; peristomii intus convoluta multica. v. breviter capsula ciliata: capsula pedicellata, pedicello flavo

    - T. convoluta

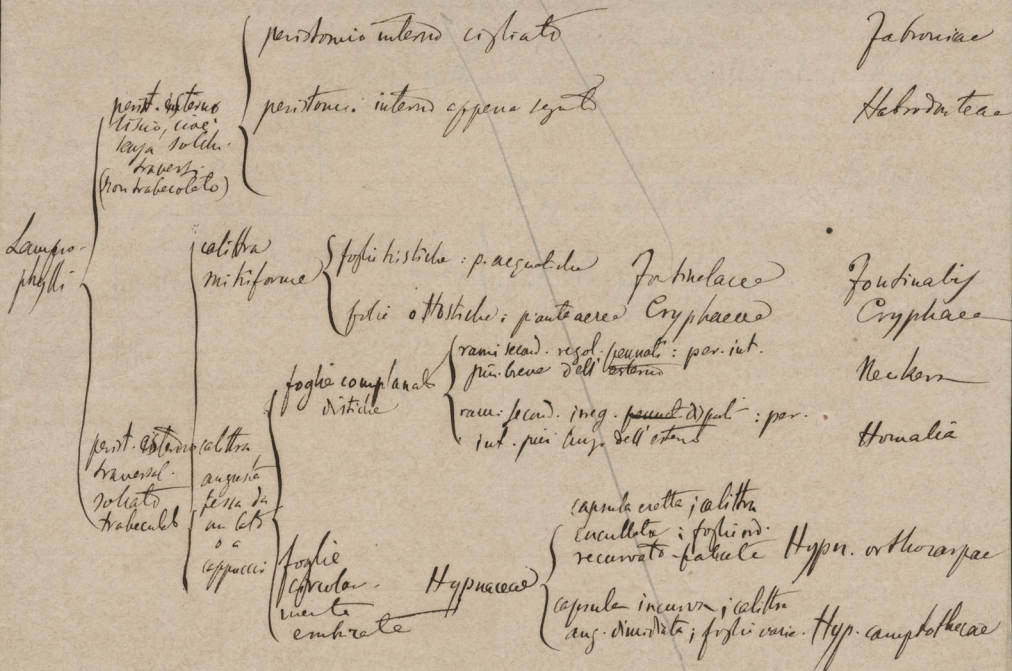
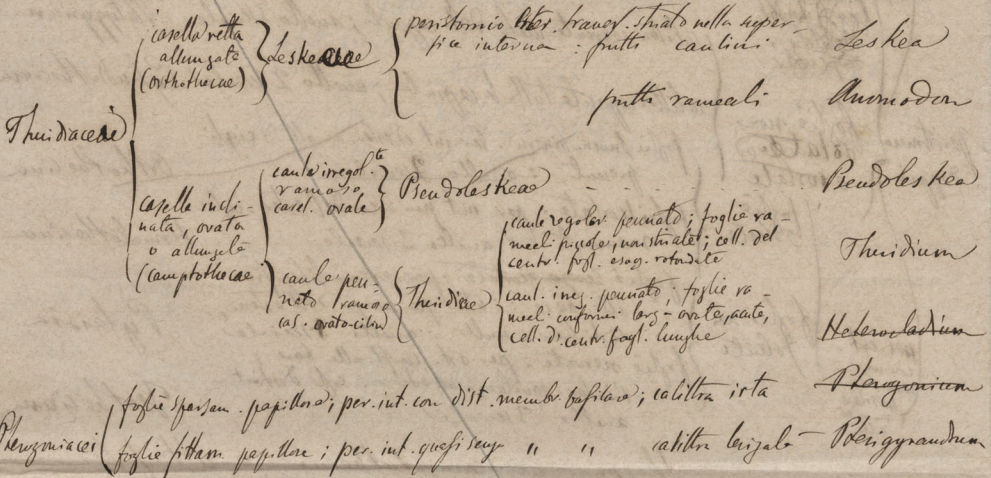




# Muschi pleurocarpi

fr. sempre ascollari. Questi s. dividono in

- Thuidiacei : { foglie primo d'acqua } cellule del centro fogliace *cladoflores*  
 Pterogoniacei : { foglie papilion. } " " " *aclofiflores*  
 Lamprophylli : foglie lucenti, nitide, rev. opaco, papiflores.



*Hypnaceae orthothecae*

peristoma  
duplice

calittra nuda; fogli visibili da vicino  
calittra cincta; fogli appianate  
foglie solite e scortate  
calittra ricoperta metà delle capsule  
calittra ricoperta tutte le capsule

Leucoda  
Leptodon  
Autiothecia  
Climacium

peristoma  
duplice

foglie non  
scortate  
e scortate  
foliate

calittra ricoperta metà delle capsule; anello 3-merale  
calittra ricoperta tutte le capsule; anello 2-merale  
foglie brev. divisi. per. int. ed ester. di alti: cigli  
percut.: anello 2-merale  
foglie scortate: per. int. più brevi dell'ester. cigli  
mancaut.: anello 3-merale

Platygnium  
Cylindrothecium  
Orthothecium  
Homolothecium

per. est.  
con usse  
nervi  
pari  
mole  
alba

foglie non  
foliate

foglie senza scortate: per. estimo libero fino  
alle base; i altri più lunghi dell'esterio;  
cigli bre. o nulli: anello 3-merale  
foglie nervate: per. est. conf. alle base;  
l'inter. eguale all'ester.: cigli diritti  
anello 3-merale

Pylaisia  
Isoetesium

*Hypnaceae campylothecae* v. alt. fogli





*Sp. vent. - sept.* { *folia* *achlorophyll. variegata* } *caps. capsulae* *apophysal. sept. angula* Polytrichum  
*dat. 32. 64* } *folia* *basi* *nava* <sup>sattlophila</sup> *variegata* " *caps. physal. pl. texta* Pogonatum  
*bract. apice* } *folia* *basi* *nava* *variegata* Catharine  
*epi. imbricati*  
*herem. lat.*

*Sp. vent. - simpl.* { *capsulae* *long. pedunculatae* } *Barbicum*  
*v. duplex* } *capsulae* *patulae* } *Xiphosium*  
*int. caud. truncat. eximii plurimum*

*Sp. pist. - un. 4-dentata* } *Tetraphys*  
*caps. - cincta* } *Potter*

*Sp. pist. - nullum* { *calypt. cucull.* } *anulata leuco*  
*caps. - cincta* } *calyx fiss.* } " *angustior*  
*caps. - cincta* } *calyx fiss.* } *caps. epiph.*  
*calypt. nitidiformis* } *Physomitrium*

*Cleistocarpus*

*fol. subulata, bip. ovata cell. angust. - ad. cucull.* } *Maundus*  
*ovale - oblonge lance paraclypeo - quereb.* } *calypt. cucull.* } *Pharum*  
*opercul. distinct. - in deciduum; fol. unip. palata* } *calypt. cucull.* } *Physomitrium*  
*opercul. distinct. - in deciduum; fol. unip. palata* } *calypt. cucull.* } *Systegium*

*Leurocarp*

*Capulae* *quadratae* *deschus* } *Aucto*

## Orthotrichum

Peristom. simplex;	dentes 16 succinei;	capsula emergens ellipsoide-oblonga	<i>O. animalium</i>	
Peristomium duplex circa pallens	dentes 16 per paria conserti	capsulae stomate normali	pedunculata capsula toto longitudine costata multo brevior calyptra parva strigosa	<i>O. affine</i>
		capsulae stomate sphincteriformi	pedunculata capsulam superne costatam, <sup>emergentem</sup> Equans calyptra magna valde strigosa	<i>O. spiciferum</i>
	dentes 16 diversi	capsulae stomate sphincteriformi	vaginula nuda; caps. matere exserta anguste cylindraceo-urcedata; calyptra parva strigosa; cilia 8	<i>O. tenellum</i>
			vaginula paraphysi- phora	vaginula parva paraphysiphora; capsula non omnino exserta, matere breviter urcedata; cal. nuda; cilia 8 vaginula valde paraphysate-urcedata; capsula partim, immersa, matere urcedata, calyptra stramineo-parva strigosa; cilia 16, albena longiora, raro 8
		folia apice diaphano- aristata; capsula costata; cilia normalia; stoma- ta sphincteriformia	<i>O. diaphanum</i>	
		folia nitida, nulla parte diaphana; capsula omnino laevis; cilia nodulosa- pubescentia; stomate normali	<i>O. leucocarpum</i>	

## Tribo. Encalyptaceae

## Encalypta

peristomium duplex;	flores divae;	capsula spiralter striata	<i>E. streptocarpa</i>
peristomium simplex;	flores monae;	capsula laevis; calyptra haud pubescente	<i>E. vulgaris</i>

## Sex. II Homocarpae

## Tribo. Polytichaceae

## Polytichum

peristomii dentes interne exappendiculati (Leiodon)	folia <sup>brunna</sup> marginate serrulata; calyptra totam capsulam tegens, <sup>pubescentia</sup> <del>pubescentia</del>	<i>P. formosum</i>	
	folia lanceolato-lucida, margine serrulata; calyptra capsulam non omnino tegens; apophysis parum distincta - palea nuda	<i>P. gracile</i>	
	folia marginate serrulata; cellulae epicaepae planiusculae	<i>P. commune</i>	
peristomii dentes interne brevi-appendiculati (Pterogon)	folia integra, soli capsulae serrulata	folia apice piliformi-aristata caulis inferne tomento nudo	<i>P. piliferum</i> <i>P. lanuginosum</i>
	folia sordaceo- caespitate non piligera	caulis inferne pallide-radicalis. truncatus	<i>P. strictum</i>

## Species.

Cohors II *Acrocarpae*  
 ser. I *Stegocarpae*  
 Sect. I *Tenuicarpae*  
 Trib. *Bartramiae*

*Philonotis*

*folia periantha nervo sub apice evanido pedita, lata brevia acuminata; flor. discida* *Ph. fontana*  
*folia periantha nervo* { *planta robusta; folia ramosa secundata; periantha*  
*valido evanescendo* { *latissima ovato-acuminata; flor. ♂ discide.* *Ph. calarea*  
*praedita* { *planta gracilior; folia ramosa non secundata; periantha*  
*ovata-cuspidata; flor. ♂ discido-gemmata.* *Ph. marchica*

*Bartramia*

*pedunculus* { *monoica; folia nannosa papillosa, lanceolata-linearia* *B. pomiformis*  
*elongatus* { *synoica; folia sublinearia, lanceolata, acuta* *B. oederi*  
*pedunculus, capsulae longitudine non vix excedens; folia long. linearis-capillacea; monoica* *B. Halleriana*

Trib. *Aulacomniaceae**Aulacomnion*

*folia linear-lanceolata, papillosa, serrata, areolatione densa, rotunda abque aequali* *A. palustre*

Trib. *Leucobryaceae*

*Late puberulus glauco-pallens; folia ovato-lanceolata, mollia; capsula convexa, oper. rotata* *L. glaucum*

Trib. *Orthotrichaceae**Ulotia*

*capsula matura* { *folia cincto-cincta; capsula badi, firmiuscula, sicca sub ore*  
*tota longit. dire* { *valle contracta subformis* *U. crispa*  
*octo-costata* { *folia cincto-cincta; capsula pallens, cito detrita, sicca sub*  
*perist. dentis, et cilia aequali* { *ore parum contracta aperte urceolata* *U. crispula*  
*capsula matura sub ore plus octo breviter notata; perist. cilia brevissima* *U. Ludovigii*



## Bryum

flores  
 Synoici { folia apice serrulata, basi purpurascens; capsula badii oblongo-pyriformis  
 siccis sub ore contracta; operculum breviter concavum, badii unum B. bimum  
 folia integra, virescentia; capsula sanguineo-atra, cylindro-clavata, siccis  
 ore non contracta; operculum altius concavum, tubellum B. torquens

flores monoici; folia, subintegra, basi purpurascens; capsula pallida, elongata-  
 pyriformis; operculum alte concavum, nitidulum B. pallens

flores  
 divici { rami tereti, julacei, albo-argentei; folia obovata, evaniduo-ria, apiculata,  
 capsula ovata atro-nigra, dein nigrescens, operc. conc. acutius. B. argenteum  
 caulis foliis amplissimis mucicis, serratis, apice dense mucos-congestis B. roseum  
 folia ovata apice recurvo-cuspidato-aristata, marginata B. capillare  
 capsula subrotunda, cornua, siccis lacinata ore angulo hians, rufa B. versicolor  
 capsula obliqua pyriformis, asymmetria, pallida B. pallens  
 caulis elatus, caespitosus, ramis, folia  
 late ovata; capsula alte pedunc. ; paludicola B. pseudohypnum  
 rami  
 hauri  
 angulato  
 julacei { caulis  
 apice  
 mucos.  
 foliatus } folia  
 na  
 recurvo-  
 cupidata } capsula  
 oblonga  
 v.  
 pyriformi } capsula  
 hauri  
 cupidata } caulis  
 hauri  
 cupidata } folia  
 brevia  
 cupidata; capsula ovato-  
 oblonga, badii; operc. brevis con-  
 cav. apiculatum, rubrum B. caespitium  
 cupidata } folia  
 oblonga, sanguinea; operc. alte non nullatenus  
 contracta } B. atro-purpureum

## Lieria

Folia ovato-acuta, nervo ante apicem depresso profunde; capsula horizontali; elongata, clavata L. julacea

## Webera

flores monoici  
 v. polygam { fl. monoici; folia plana, cartilaginea, ovato-lanceolata, supero-ov. hauri-  
 lanceolata, perispermium purpurascens; capsula spissa natans W. nutans  
 fl. polygami; folia plana, aurescens nitentia; ovata, supero-ov. hauri-  
 lanceolata; perispermium pallide flavum; capsula subhorizontali W. erida  
 folia ovato-lanceolata, albidoglaucis W. albicans  
 fl. monoici { folia ovato-lanceolata, laevi-texta; pedunculus crassiusculus  
 et capsula obtusa-brevi, siccis angulo ore hians subhauri-phae-  
 rica; mucos. carneo-sanguinea - caulis, bulbosus ..... W. carnea  
 ovirentia { folia ovato-lanceolata, angustius-texta; pedunculus et capsula  
 elongata-pyriformis, siccis sub ore contracta, pallide purpurascens  
 caulis, bulbosus ..... W. annulata







evolutio caulis definita: caulis ramisque

plumaeque erectissimae et brevissimae  
fructus laminales s. spines laterales

M. arborescens

evolutio caulis indefinita, caulis ramisque

plumaeque diffusi et elongati;  
fructus laminales

M. pleurocarpi

Plumaeque

{ folia prostrata in specu ni-  
vota; cellulae elongatae  
folia nitore exserta;  
cellulae abbreviatae  
tetraedrae

lamp. phyll.

- thuridacei

lamp. phyll.

{ montani  
dent. trilob.  
cubet

# Pogonatum

## Urnigera

Proxiores. Vagina fol. arcte  
amplect., cellularij clausatis  
perangustis pachydermatis contexta

## Aloidea

Humiles. Vagina fol. laxe amplex.  
cellulij latiusculij parallelis, rarij  
paralichymatis contexta.

caps. oblong. cras-  
sissima, flaccida, opor-  
culo concavo-mollato  
(*P. alpinum*)

caps. oblong.  
angusta, coriacea,  
operc. hemisph. mollato  
(*P. urnigerum*)

capsula oblongo-  
cylindracea  
(*P. aloidea*)

caps. hemisphaer.  
rivo-cyathoides  
(*P. nanum*)

# Dissidens

Majores, pedunc. later. perichaet distinct.

Minores, pedunc. termin., perichaet. indistinct.

Pedunc. e med. caul.  
Folia nerv. arcte apic.  
berratum deflexa, im-  
marginata, utrinque  
convexiuscula cellularij  
(*D. adiantoides*)

Pedunc. ....  
Folia nerv. sub  
apice deflexa, mar-  
ginata serrulata  
utrinque mucrono-  
peristichata  
(*D. Laegeri*)

Pedunc. e med. caul.  
Folia nerv. excav.  
later. marginata  
ap. serrata, utrinque  
planiuscula cellularij  
(*D. decipiens*)

Ped. e basi caul.  
Folia nerv. excav.  
marginata  
serrulata,  
in alijs nam  
muse cellularij  
(*D. taxifolius*)

Caul. claus. imov.  
Folia immarginata  
lorenul. nerv. concav.  
operc. longior.  
perist. curv.  
long. strobilata  
fl. divic.

caul. claus. par. imov.  
Folia crisp. marginata  
lorenul. nerv. concav.  
operc. ....  
perist. curv. obliq.  
strobilata  
fl. divic.

caul. brev. par.  
imov. Folia  
lorenul. nerv. concav.  
operc. ....  
perist. curv.  
strobilata  
fl. max. term.  
vel laterale  
fl. divic.

caul. medio. long.  
Folia ....  
lorenul. nerv. concav.  
operc. ....  
perist. curv.  
strobilata  
fl. divic.

caul. rept. long.  
Folia ....  
lorenul. nerv. concav.  
operc. ....  
perist. curv.  
strobilata  
fl. divic.

caul. simplex  
Folia tenuit. marginata  
lorenul. nerv. concav.  
operc. ....  
perist. curv. subob.  
fl. ....  
plant. femin. det.  
in plant. parva & herb.

*D. communis*

*D. Mildebrandii*

*D. laegeri*

*D. crispifolius*

*D. vicarius*

*D. laudus*





## Procuri

Già dal 1864, ho fatto N° publico report una centena  
 di muschi dissecati, che i aveva raccolti nelle  
 prairie di Trips, e seguitamente nel P.  
 Mantello, che nelle sue ombre e uvide  
 vallate alimete un essere re comun-  
 forme di cottage. Posteriormente ebbe  
 occasione di visitare più volte, esordendo,  
 monti intorno Vittorio e più particolarmente  
 il P. Canoglio, il quale giace ad un'altezza  
 di oltre 1000 metri sul livello del mare,  
 e costituito di faggi, di conifere offre  
 una vegetazione biologica ben diversa da quella  
 del Mantello, che, come è noto, è posto  
 nelle regioni colline ed è formato quasi  
 totalmente di querce. Nel P. Canoglio  
 feci <sup>quasi</sup> copiosa raccolta di oltre 1000 specie di  
 muschi, cotiche <sup>parte usuale</sup> <sup>altre</sup> aggiunte quasi  
 (1) quelle del Mantello e delle molte  
 altre regioni colline, palustri e campestri  
 del Trips da un'explorazione, ne risultò  
 un numero di specie un offatto scarso  
 (217)



Poche cose dei due sulla distribuzione geografica  
 dei muschi triisici. Le ~~specie~~ <sup>specie</sup> ~~reali~~  
 Essi <sup>infatti</sup> appartengono <sup>tutte</sup> <sup>quella</sup> <sup>botanica</sup> <sup>di</sup> alla zona intermedia, che  
 l'alt. de Notari, <sup>diam. intermedio</sup> <sup>del</sup> <sup>limite</sup> <sup>del</sup>  
 oltre al limite superiore delle conifere.  
 Mancando nel Triisico <sup>specie</sup> <sup>di</sup>  
 roccie <sup>per</sup> <sup>certi</sup> <sup>tipi</sup>, e <sup>per</sup> <sup>alcune</sup>  
 parti della, ci mancano quindi molti  
 generi e specie che in tal luogo spesso  
 prosperano, com. p. e. il <sup>gen.</sup> <sup>Ambrosia</sup>,  
 Compositum, Catechu, e molti  
 specie di <sup>frumini</sup>, Eucalypti, Hypn  
 etc.

~~Il~~ <sup>Il</sup> <sup>champ.</sup> <sup>Ba.</sup> <sup>de</sup> <sup>Hoheubibel</sup> <sup>Beuffer</sup>  
 ha compilato e pubblicato nella scorsa annata  
 una <sup>monografia</sup> <sup>delle</sup> <sup>altre</sup> <sup>specie</sup> <sup>venute</sup>,  
 fra cui i muschi, di <sup>esse</sup> <sup>specie</sup> <sup>per</sup> <sup>la</sup> <sup>parte</sup>  
 delle <sup>specie</sup> <sup>dei</sup> <sup>lavori</sup> <sup>pubblicati</sup> <sup>di</sup>  
 Triisico, del de Notari, del Molend,  
 e <sup>miei</sup>. ~~Le~~ ~~specie~~ ~~che~~  
 Le <sup>specie</sup> <sup>piu</sup> <sup>importanti</sup> <sup>d'</sup> <sup>queste</sup> <sup>specie</sup>  
 sono: il Rhynchos depressum, l'A. intermedium  
 l'Hypn reptile <sup>var. intermedium</sup>, T. recurvum

3.

# Limnobiium

folia imbricata, patula, subsecunda, ovata, concavata, nervi ultra medium  
evanidus; capsula incurva

L. palestine

folia imbricata ad prope, falcata, ovata, concava, nervi ad apicem  
evanidus; capsula suberecta

L. subphaerica sp.

# Hypnum

- |                               |  |   |   |
|-------------------------------|--|---|---|
| obtusifolium;                 | caulis apex ex foliis involutus acutatus;  | fol. ovata obtusa basi 2-nervi  | H. cuspidatum   |
|                               |  |   | H. stellatum  |
| folia undique<br>squarrosa    | flos dorsi;  | folia o basi ovata attenuata subulata enervia   | H. Halleri  |
|                               |  | flos<br>monici  | fol. squarrosa refracta o basi ovata lobunculo-subulata hamata,<br>anguste areolata |
| folia se,<br>cunda<br>falcata | caulis in planum pectinato-ramosus, pinniformis, parve paraphyllosum,<br>capsula brevis, incurva, operculum acutum |   | H. mollexum   |
|                               |  | flos<br>dorsi   | folia disticha secunda, falcata, ovata, cuspidata-subulata                          |
| crinata<br>subincta           | caulis<br>non<br>pinnifor-<br>mis  | folia haud disticha, secunda, falcata, ovata obliqua cuspidata                                  | H. arcuatum   |
|                               |  | flos monici; fol. undique imbricata, in ramis subsecunda,<br>ovata oblonga, attenuata-cuspidata | H. Haldanianum  |





- Thamniium*. caul. dendroide; foliis nerv.; per. int. est. 2 cigl. equali; cigl. appendic. ped. liscio; anello 2-seriale; operc. rotund.; cell. foli. quadr. - losangol. hinc -
- Euschyndium* caul. cespit. dimisso; ped. liscio o scabro; op. longirostr. cell. foli. rotund. lineari; allungate
- Mazothecium* caule cespit. perilegio radiante: per. a cigl. 0; ped. liscio: op. brevis; cellulae rotund. hinc o allug.
- Amblystegium* caule cesp. repente; fo ovate nerv. uno, perist. manente perno d cigli e diacolle ped. liscio; op. brevis; cell. oblong. paracolum.
- Campylothecium* caule cesp. foli. nerv. perist. est confl. alle bar, equali all' interno; cyste dr 2-3. ped. scabro operc. unice; cell. angustissime lineari.
- Brachythecium* caule cespit. foliis ovate, nervate; perist. imbricatis; ped. liscio o scabro: op. unice: cellulae rotundae-eragulae, clonifilae.
- Hypnum* caule cespit. dimisso ascend.; foliis nerv. o no. perist. confluent alle bar ad equidistanti all' interno, cyst. 2-3 - op. unice: cellulae angustissime lineari: a clonifilae.
- Hylacomium* caule cespit. dim. o ascend. foliis 2 nervate, longis, serratis; peristomio imbricatis; ped. liscio; operc. unice attenuato; cellulae angustissime lineari: a clonifilae.



calyptrata  
Opunculet  
holocarp

axtoni } calyptra dim. data  
          } p. cucull. formi

gymnotum }

cal. cucull. for.

peristomii  
diviso

calyptra  
multiplici

p. dent 16 interi

cal. bar. interm; caps. exapophys.

cal. bif. laev, unchi; caps. subapophys.

p. dent. 11

p. dent. 16 ex. pugnati. calyptra cau

pan. capsula exapophys. longior.

Pharcon  
Pleuridra  
Gymnotum  
Physconotum  
Tetraphys  
Eucalypt

*R. hypoleucum*  
 foliis lanceatis subultr. long.  
 Men. ap. u. dehn. fol. planior. nerv.  
 ut et n. et c.

*R. leucum*  
 foliis lanceatis subultr. long.  
 Men. ap. u. dehn. fol. planior. nerv.  
 ut et n. et c.

*R. prostratum*  
 foliis lanceatis subultr. long.  
 Men. ap. u. dehn. fol. planior. nerv.  
 ut et n. et c.

*R. thalictroides*  
 foliis lanceatis subultr. long.  
 Men. ap. u. dehn. fol. planior. nerv.  
 ut et n. et c.

*R. hirsutum*  
 foliis lanceatis subultr. long.  
 Men. ap. u. dehn. fol. planior. nerv.  
 ut et n. et c.

*R. depressum*  
 foliis lanceatis subultr. long.  
 Men. ap. u. dehn. fol. planior. nerv.  
 ut et n. et c.

*R. scaberrimum*  
 foliis lanceatis subultr. long.  
 Men. ap. u. dehn. fol. planior. nerv.  
 ut et n. et c.

*R. caperatum*  
 foliis lanceatis subultr. long.  
 Men. ap. u. dehn. fol. planior. nerv.  
 ut et n. et c.

*R. muricatum*  
 foliis lanceatis subultr. long.  
 Men. ap. u. dehn. fol. planior. nerv.  
 ut et n. et c.

*R. serrulatum*  
 foliis lanceatis subultr. long.  
 Men. ap. u. dehn. fol. planior. nerv.  
 ut et n. et c.

**Hylocium**

foliis late ovatis, apice mucronatis, basi obtusis, integris, paucis. nullo  
 caulis pallens; foliis oppositis, ovatis, basi obtusis, integris, paucis. nullo  
 H. parvum

foliis ovatis, basi cordatis, mucronatis, integris, paucis. nullo  
 caulis subultr. long.; foliis ovatis, basi obtusis, mucronatis, integris, paucis. nullo  
 H. Schuber

foliis ovatis, basi cordatis, mucronatis, integris, paucis. nullo  
 caulis planis, bipinnatis, mucronatis; foliis ovatis, basi obtusis, mucronatis, integris, paucis. nullo  
 H. splendens

foliis ovatis, basi cordatis, mucronatis, integris, paucis. nullo  
 caulis vix ramosus  
 folia imbricate, basi cordatis, mucronatis, integris, paucis. nullo  
 H. Bakeri

foliis ovatis, basi cordatis, mucronatis, integris, paucis. nullo  
 caulis vix ramosus  
 folia squamata, basi cordatis, mucronatis, integris, paucis. nullo  
 H. bicolor

foliis ovatis, basi cordatis, mucronatis, integris, paucis. nullo  
 caulis vix ramosus  
 folia ovata, basi cordatis, mucronatis, integris, paucis. nullo  
 H. nigrosum

foliis ovatis, basi cordatis, mucronatis, integris, paucis. nullo  
 caulis vix ramosus  
 folia ovata, basi cordatis, mucronatis, integris, paucis. nullo  
 H. hypoleucum

foliis ovatis, basi cordatis, mucronatis, integris, paucis. nullo  
 caulis vix ramosus  
 folia ovata, basi cordatis, mucronatis, integris, paucis. nullo  
 H. squamatum

Pleurocarpi

Lamprophyllae: folia in toto crisco, persistentia per exsiccationem, compressa; cellulae plerumque elongatae, proechymatae, rarius parenchymatae  
calyptra mitiformis . . . . . Ventralis

calyptra anguste lateralis filia	capula cor. tot. copiosa constr. densa	caulis dendroideus; cellulae fol. plerumq. abbreviat. <span style="float:right">Thamniaceae</span>
		op. laxioribus; per. int. segn. breviss. late elongat.
	fol. imbricata 1-2-3-4-5-6-7-8-9-10-11-12-13-14-15-16-17-18-19-20-21-22-23-24-25-26-27-28-29-30-31-32-33-34-35-36-37-38-39-40-41-42-43-44-45-46-47-48-49-50-51-52-53-54-55-56-57-58-59-60-61-62-63-64-65-66-67-68-69-70-71-72-73-74-75-76-77-78-79-80-81-82-83-84-85-86-87-88-89-90-91-92-93-94-95-96-97-98-99-100	caulis densius copulatus; cellulae fol. plerumq. elongatae <span style="float:right">Rhytidolobaceae</span>
		op. laxioribus; per. int. segn. breviss. late elongat.
	fol. imbricata 1-2-3-4-5-6-7-8-9-10-11-12-13-14-15-16-17-18-19-20-21-22-23-24-25-26-27-28-29-30-31-32-33-34-35-36-37-38-39-40-41-42-43-44-45-46-47-48-49-50-51-52-53-54-55-56-57-58-59-60-61-62-63-64-65-66-67-68-69-70-71-72-73-74-75-76-77-78-79-80-81-82-83-84-85-86-87-88-89-90-91-92-93-94-95-96-97-98-99-100	caulis validus, copulatus; cellulae fol. elongatae linearis <span style="float:right">Hylocomiaceae</span>
		op. crisco, v. brevioribus; per. int. segn. late elongat.
	fol. imbricata 1-2-3-4-5-6-7-8-9-10-11-12-13-14-15-16-17-18-19-20-21-22-23-24-25-26-27-28-29-30-31-32-33-34-35-36-37-38-39-40-41-42-43-44-45-46-47-48-49-50-51-52-53-54-55-56-57-58-59-60-61-62-63-64-65-66-67-68-69-70-71-72-73-74-75-76-77-78-79-80-81-82-83-84-85-86-87-88-89-90-91-92-93-94-95-96-97-98-99-100	caulis eximie pectinatus; cellulae fol. elongatae <span style="float:right">Ptilium</span>
		op. concoloribus; per. int. segn. ang. breviss.
	fol. imbricata 1-2-3-4-5-6-7-8-9-10-11-12-13-14-15-16-17-18-19-20-21-22-23-24-25-26-27-28-29-30-31-32-33-34-35-36-37-38-39-40-41-42-43-44-45-46-47-48-49-50-51-52-53-54-55-56-57-58-59-60-61-62-63-64-65-66-67-68-69-70-71-72-73-74-75-76-77-78-79-80-81-82-83-84-85-86-87-88-89-90-91-92-93-94-95-96-97-98-99-100	caulis raris copulatus; cellulae fol. tereti-fusoides <span style="float:right">Brachythecium</span>
		op. brevibus; per. int. segn. ang. breviss.
fol. imbricata 1-2-3-4-5-6-7-8-9-10-11-12-13-14-15-16-17-18-19-20-21-22-23-24-25-26-27-28-29-30-31-32-33-34-35-36-37-38-39-40-41-42-43-44-45-46-47-48-49-50-51-52-53-54-55-56-57-58-59-60-61-62-63-64-65-66-67-68-69-70-71-72-73-74-75-76-77-78-79-80-81-82-83-84-85-86-87-88-89-90-91-92-93-94-95-96-97-98-99-100	caulis densius copulatus; cellulae fol. tereti-fusoides <span style="float:right">Athyrium</span>	
	op. brevibus; per. int. segn. ang. breviss.	
fol. imbricata 1-2-3-4-5-6-7-8-9-10-11-12-13-14-15-16-17-18-19-20-21-22-23-24-25-26-27-28-29-30-31-32-33-34-35-36-37-38-39-40-41-42-43-44-45-46-47-48-49-50-51-52-53-54-55-56-57-58-59-60-61-62-63-64-65-66-67-68-69-70-71-72-73-74-75-76-77-78-79-80-81-82-83-84-85-86-87-88-89-90-91-92-93-94-95-96-97-98-99-100	caulis cespit. cell. <span style="float:right">Lunularia</span>	
	op. brevibus; per. int. segn. ang. breviss.	
fol. imbricata 1-2-3-4-5-6-7-8-9-10-11-12-13-14-15-16-17-18-19-20-21-22-23-24-25-26-27-28-29-30-31-32-33-34-35-36-37-38-39-40-41-42-43-44-45-46-47-48-49-50-51-52-53-54-55-56-57-58-59-60-61-62-63-64-65-66-67-68-69-70-71-72-73-74-75-76-77-78-79-80-81-82-83-84-85-86-87-88-89-90-91-92-93-94-95-96-97-98-99-100	caulis cespit. cell. fol. elongatae fusoides <span style="float:right">Hypnum</span>	
	op. concoloribus; per. int. segn. ang. breviss.	
fol. imbricata 1-2-3-4-5-6-7-8-9-10-11-12-13-14-15-16-17-18-19-20-21-22-23-24-25-26-27-28-29-30-31-32-33-34-35-36-37-38-39-40-41-42-43-44-45-46-47-48-49-50-51-52-53-54-55-56-57-58-59-60-61-62-63-64-65-66-67-68-69-70-71-72-73-74-75-76-77-78-79-80-81-82-83-84-85-86-87-88-89-90-91-92-93-94-95-96-97-98-99-100	caulis cespit. cell. quadr. orbis. hexag. v. elong. <span style="float:right">Plagiodium</span>	
	op. concoloribus; per. int. segn. ang. breviss.	

longiora Thamniaceae Rhytidolobaceae

breviora:

Cellule della foglia verdi fusoides lineari. Hypnum, Hylocomium, Campylotrichum

peduncolo lisci { caule <sup>ovato</sup> pinnato di peristilii; Hylocomium  
per. int. segn. breviss. late elongat.

peduncolo callosi { caule <sup>ovato</sup> pinnato di peristilii; Hypnum  
per. int. segn. breviss. late elongat.

operculo longiora { caule dens. cellulae quadrat. v. orb. Thamniaceae  
 { caule cespit. top; cellulae romboid. orb. Eustichium

operculo crisco { peristilii radicante - per. int. segn. breviss. late elongat. Plagiobolus

operculo crisco { peristilii <sup>radicante</sup> Athyrium  
foliis raris subpinnatis, cell. elongat. angustis  
angustis operculo miciloides

operculo crisco { peristilii <sup>radicante</sup> Brachythecium  
foliis foliatis fusoides; cell. elongat. angustis  
angustis, orb. v. caput subovata

Cellule del uovo delle foglie quadrate, romboidali, allungate (non lineari), con cloroplasti

# Mnium

folia marginata	{	magne inter: costa levigata; fior. divisi	{	fior. divisi	{	operculo rostrato	M. punctatum		
		magne minuta & dent. seculis	{	fior. divisi	{	operculo	{	foglie perich. obovato-lunghe cellule fogliari ovato rot. pic.	M. rostratum
		{	{	{	{	erotte	{	foglie perich. larg. ligulate cellule rotondo spag. dopp. grandi	M. cuspidatum
		{	{	fior. divisi	{	foglie ovato-ligulate, piane caule pultifero eretto	{	M. medianum	
		{	{	{	{	foglie allungate-ligulate, undulate caule pultifero per uniformes	M. affine		
		{	{	fior. divisi; costa al dorso levigata	{	{	M. undulatum		
magne minuta & dent. geminati	{	fior. divisi; costa spinulosa	{	{	{	operculo rostrato	M. striatum		
		{	{	{	{	operculo erotte	M. orthorrhynchum		
		{	{	{	{	{	M. hornum		







Weber

Phlia  
cigli: perist. 0,0  
fiori: bracci della metà dei  
centri interni

capula baccata; op. conico -  
" longicolla. op. subtrito

W. polymorpha  
W. elongata

fiori monici { foglie piane  
foglie cucullate

W. nutans  
W. cucullata  
W. cruda

Weber  
cogli lunghi  
grandi i  
o centri inter-  
ni.

fiori poliziani: foglie splendidi - molto di  
foglie bianco-fulvere per int. espilato  
~~capula ristretta sotto la base, setosa~~

W. albicans  
W. annotina

fiori  
dibici { retroscissura lassa

W. comae  
W. pubescentia

foglie ovate  
deggianti { ~~capula lassa~~  
long. apice } cogli nodosi filif.

W. Ludovici

foglie larghe ovate, acum. subtrite

W. Tozeri



*Bryum*

flores synœci

foliis oblongo-lanceolatis, <sup>brevis</sup> cuspidatis, apice serratis, basi purpurascens; capsulis badiis oblongo-pyriformibus, sicci subse contractis, operculo breviter conico, apiculato, badio viridibus; capsulis <sup>ovatis</sup> sanguineis, sicci non contractis, operculo alto conico, apiculato nitide rubello

*B. bimum* Schreb.  
*B. torquens* B.S.

flores monœci

foliis oblongo-ovatis, cuspidatis, subtequis, basi purpurascens; capsulis elongato-pyriformibus, pallide badiis; operculo alto conico, apiculato, nitidulo

*B. pallens* Schl.

habitu musci, caulis folis capillibus  
oblongo-ovatis, serratis apice dense mucosulis

flores divici

foliis ovato-acuminatis, <sup>non excavatis</sup> cuspidatis, flavidiis; capsulis, solidis, ovato-oblongis, sanguineis, sicci non contractis; operculo alto mammilato, nitide purpureo

*B. abopopurcum*  
W. M.

foliis rectis, ovatis lanceolatis, cuspidatis, innatis; capsulis conicis ovato-rotundis, miltis, obo angulo mammatis; operculo alto conico

*B. versicolor* A. Br.  
Caer

foliis ovato-lanceolatis, longe cuspidatis, marginatis; capsulis <sup>oblongis</sup> pyriformibus, inclinatibus, badiis; operculo conico, apiculato, rubello

*B. caespitium*  
Caer

foliis obovatis, acuminatis, nervo <sup>1 supra medium</sup> excavato; capsulis ovatis, <sup>basin</sup> subse contractis, operculo conico-acutiusculis

*B. agrestium* L.  
Myer

foliis late ovato-acuminatis, <sup>nervis excavatis</sup> apice capilliformi; nervo <sup>1 supra medium</sup> excavato; capsulis <sup>oblongis</sup> ovatis, inclinatibus horizontalibus, operculo bre mammilato

*B. capillare* Willd.  
M

foliis latius, subpatatis, oblongo-lanceolatis, apice serratis, marginatis, flabris maculis gemmaceis; capsulis longe pyriformibus, oblongo-pyriformibus, ov. glandulis; badiis; operculo alto mammilato, apiculato  
foliis elongato-acuminatis, nervo excavato apiculatis, marginatis; capsulis pyriformibus, abymicis, flavidiis; basin subse contractis, operculo conico apiculato

*B. pseudotripartitum*  
M.

*B. pallens* Siv-  
apid

~~Loric - areol. hexag. rhomb; inf. angustata perist. col. rudimentaria  
 Anisum - areolat. ubiq. lata, pascuhyrn hexangulata; fol. late  
 Bryum - areol. hexagono-rhombica, inf. angustata; fol. late  
 Weber - areol. ubiq. lineali; fol. lanceolata; angustata  
 Anisum - fol. late areolat. <sup>capitul.</sup> per. est in brev. delin. cat. subsessile  
 Meesia - f. deus areol. papill. per. est multo u u cat. aculeat.~~

perist. est. = interio.  
 per. est. multo per  
 brev. delin. interio.

perist. exterior  
 interior  
 subgrans

fol. areolat. ubiq. laxa, hexagon-pascuhyrn. fol. late  
 fol. areol. hexag. rhomb. sp. int. citis. perfecte  
 fol. areol. inf. angustata sp. int. citis. 0. v. rudiment.  
 fol. areolat. ubiq. hexagono-lineali; fol. angustata

Anisum  
 Bryum  
 Loric  
 Weber

perist. exterior  
 interior  
 brevius

fol. laxe areolat. capitulum: per. est paulo brevius quam  
 inter. calyptra sub-vestiata  
 fol. deus areolat. papillata; per. est multo brevius quam  
 inter. - calyptra aculeata

Anisum  
 Meesia

foliis: squamis  
 foliis: costa robustis  
 foliis: costa tenui  
 v. nuda  
 foliis: parte  
 pallid. parte erect. petiol.

Cerythra  
 demum exalata  
 caulis: planum pectinatus ramis, fundiformis  
 caulis: assurgens  
 caulis: sequis, radians  
 caulis: papillo  
 Cratomeum  
 Chamaedon  
 Hypnidium  
 Homomallum  
 Helictes phyll.

Hypnum

Leptocarpus  
Cladocarpus

areol. parench. bnf. lacini papill. dens  
" " dens plus minus papill. dens

fol. multif.  
" diuretica

Andraceae  
Brachiaceae

Acaula  
Phacum  
Lichium  
Bridens  
Leucogyne

distichophyll.

areol. fol. parench. min. fol. clausellip  
" " " fol. diviso et apice in lamellas pedicel.

fol. context. polystrumatis  
linea areolata

fol. areol. parench. lax. chlorophyll. hex. v. polyg. min. echlorophy.

polytrichos.

f. epapill.  
lign.

decurvatoareolata

fol. areol. bnf. parallel. ep. versus rotund. hexag. parenchym. chloroph. v. v. crisp. Mnaceae

Stegopyg. p. hylla

fol. 1  
strom.

fol. areol. parench. pl. rhombid. chloroph. Bryaceae

fol. cell. parench. alax. bnf. p. mare in vertum. angustae v. planae et superio. v. bnf. multa lacini. reticulatae Durandaceae

fol. cell. bnf. rhombae sup. rectang. v. mixtae, laxae, alax. p. mare nulle Leptobryaceae

fol. papillae

fol. cell. parenchym. quad. p. mare ad part. dens. papill. nodulosa v. habe nung. grac. Bartramiaceae

fol. cell. parenchym. quad. super. bnf. p. mare und. oblatas et bnf. pedunculat. Rothaceae

10.

Tribo. *Dicranaceae**Dicranum*

capsula oblonga- cylindrica	capsula curvata cernua	foliorum nervi dorso dentatis v. asper	folia in fimo pallida-secunda	capsulae in singulis perichathis foliorum folia non undulata; nervus dorso bifurcus serratus . . . . .	<u><i>D. scoparium</i></u>
			folia in fimo uncata tortuosa v. cimbata, flavo- viridia, dorso ad nervum scabida	capsulae in singulis perichathis plures; folia exquisite undulata; nervus dorso quinque parvas dentatus	<u><i>D. undulatum</i></u> <u><i>D. Mühlenbeckii</i></u>
	foliorum nervi dorso laevis	folia lanceolata, cauculata, pallida, undulata, capsula terres	folia obovata, pubescentia, nervo v. c. latata; caps. oblonga	foliorum costa crassissima i. e. tortuam parvam latitudinem foliorum bases occupans . . . . .	<u><i>D. Bonjeani</i></u> <u><i>D. virens</i></u>
			folia stramineo sicc. foliata v. secunda	foliorum costa angustior i. e. quidam par- tem latitudinis foliorum bases occupans	<u><i>D. longifolium</i></u> <u><i>D. Lauteri</i></u> <u><i>D. montanum</i></u>
capsula erecta v. lentius imbricata	folia madida erecto-secunda, sicc. tortuosa-cimbata				

capsula ovata, parva, obliqua, basi vix truncata; fol. obovata caps. fusca, secunda subpallida *D. heteromellum*

*Dicranodolium*

fol. secunda caps. fusca pubescentia, subpallida; capsulae ovatae pedunc. cyaneo-fuscae *D. longirostre*

*Dicranella*

fol. vix secunda; capsula ovata, obliqua, curvata, anulus mediantarium *D. varia*  
fol. pallida-secunda; capsula ovata, erecta; anulus nullus *D. rufescens*

Tribo. *Seliginaeae**Seligeria*

flor. monici; caulibus brevissimis; folia superiora subulata, summa obovata  
subelliptica obtusiuscula subulata; pedunculus rectus; capsula  
subpyriformis, sicc. cyathiformis, feno badi *S. pusilla*  
*S. borealis*

*Anodus*

fl. monici; caulibus humilissimis; folia lobata subulata; capsula  
cyathiformis; columella, operculo rotato, pyxis erecta *A. Domany*

# Dissidium

Capula oblonga, ovata; planta densiflora pubescentia; foliis eximie disticha,  
et basi semi-circlinante ovate capsulaceo subulata

D. capitatum

# Grimmiaceae

## Grimmia

Pedunc. cyneo-flexuosus; fl. monici; capsula <sup>siccis pilis</sup> elliptica pedunculatum dimidium aequans;  
operculum concavo-intellectum; foliis saepe ex ap. obtuse longe piligeris

G. pulvinata

Pedunc. gymnaeas; fl. monici; capsula oblique ovata, sive cornigata, pedunculatum  
longitudine superans, subimmissa; operculum convexo-intellectum; foliis plerumque  
obovato eximie piliformi-erectata

G. crinita

# Schistidium

Pascuab. caespitosa fusco-virens; foliis ovato-lanceolata, hyalino-apiculata;  
capsula perichaetis summa; ovato-digitaliformis; peristomium saturate rubrum

S. apocarpum

# Trib. Tetraphidaceae

## Tetraphis

Folia ovata, acuta, superiora lanceolata; flores masculi <sup>monici</sup> ternales in ramulis lateralibus  
basi; capsula ternis, badiis

T. pollicata

# Ser. II Clitocarpis

## Trib. Pleuridraceae

### Pleuridium

Virens; foliis a basi ovata longe subulata; flores masculi monici axillares

P. alpinifolium

## Trib. Phascaceae

### Phascum

Pedunculus capsulam longitudine exaequant; fol. oblongo-lanceolata, mucronata; capsula  
fusco-elliptica, apice obliquata

Ph. hyalae

Pedunculus capsula conspicue brevior; fol. ovato-lanceolata, cuspidata; capsula  
sphaerica <sup>apice</sup> subobovata

Ph. cuspidatum