

ICONES  
ANATOMICAE  
EX OPTIMIS NEOTERICORUM OPERIBUS  
summa diligentia depromptae et collectae  
OPERA ET STUDIO  
LEOPOLDI MARCI ANTONII  
ET  
FLORIANI CALDANI

VOLUMINIS TERTII  
SECTIO PRIMA

*Venetis ex Calcographia Josephi Picotti Anno 1810*

T A B U L A R U M  
A N A T O M I C A R U M

*P A R S T E R T I A*

---

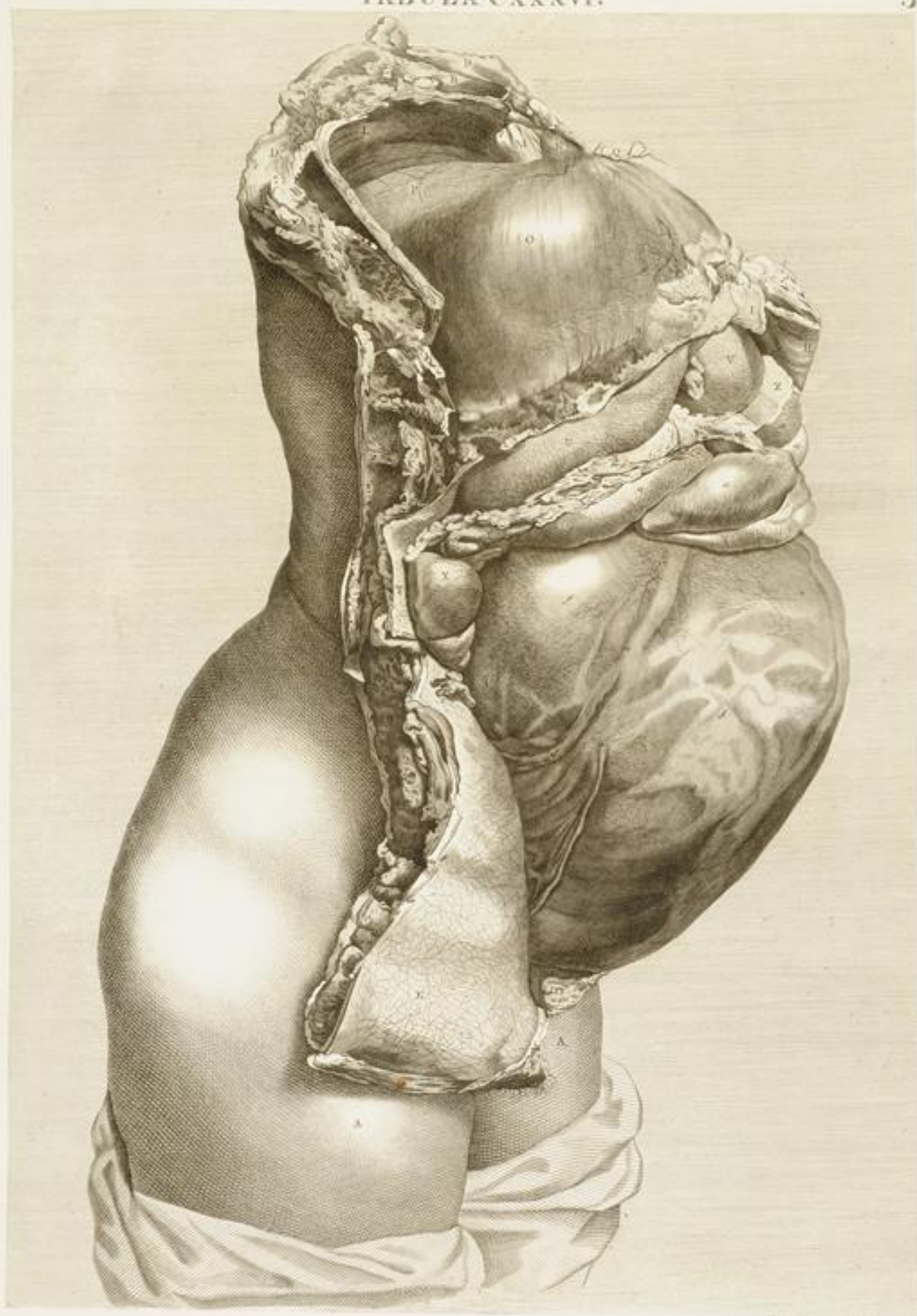
*U T E R U S G R A V I D U S E M B R I O N E S H U M A N I*

*C O R A R T E R I A E V E N A E*

TABULA CXXXV.-CCIV.

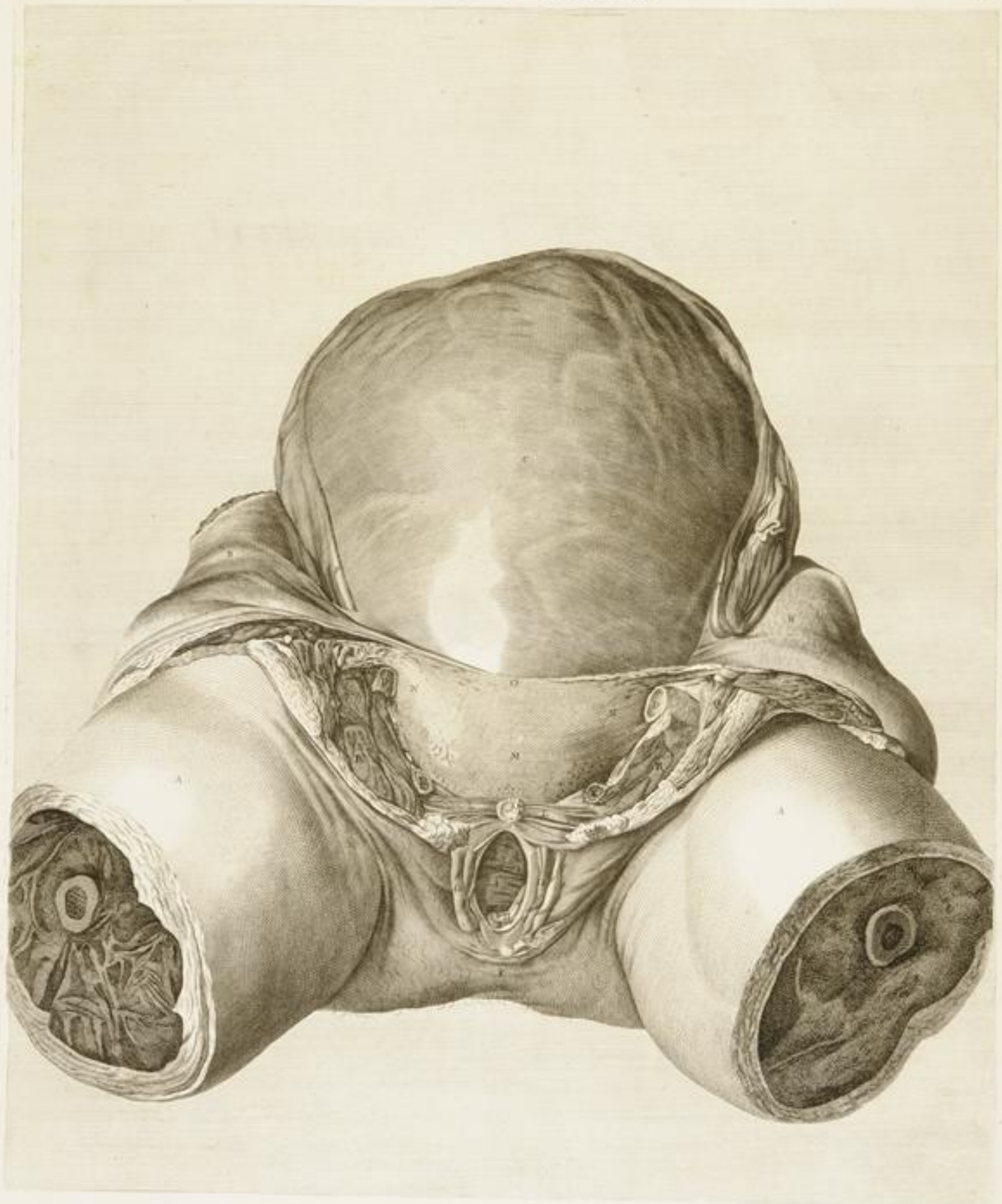


*W. Cheselden sculp.*





*Tabula CXXXVII.*



*W. Cheselden sculp.*



*W. G. S. sculp.*





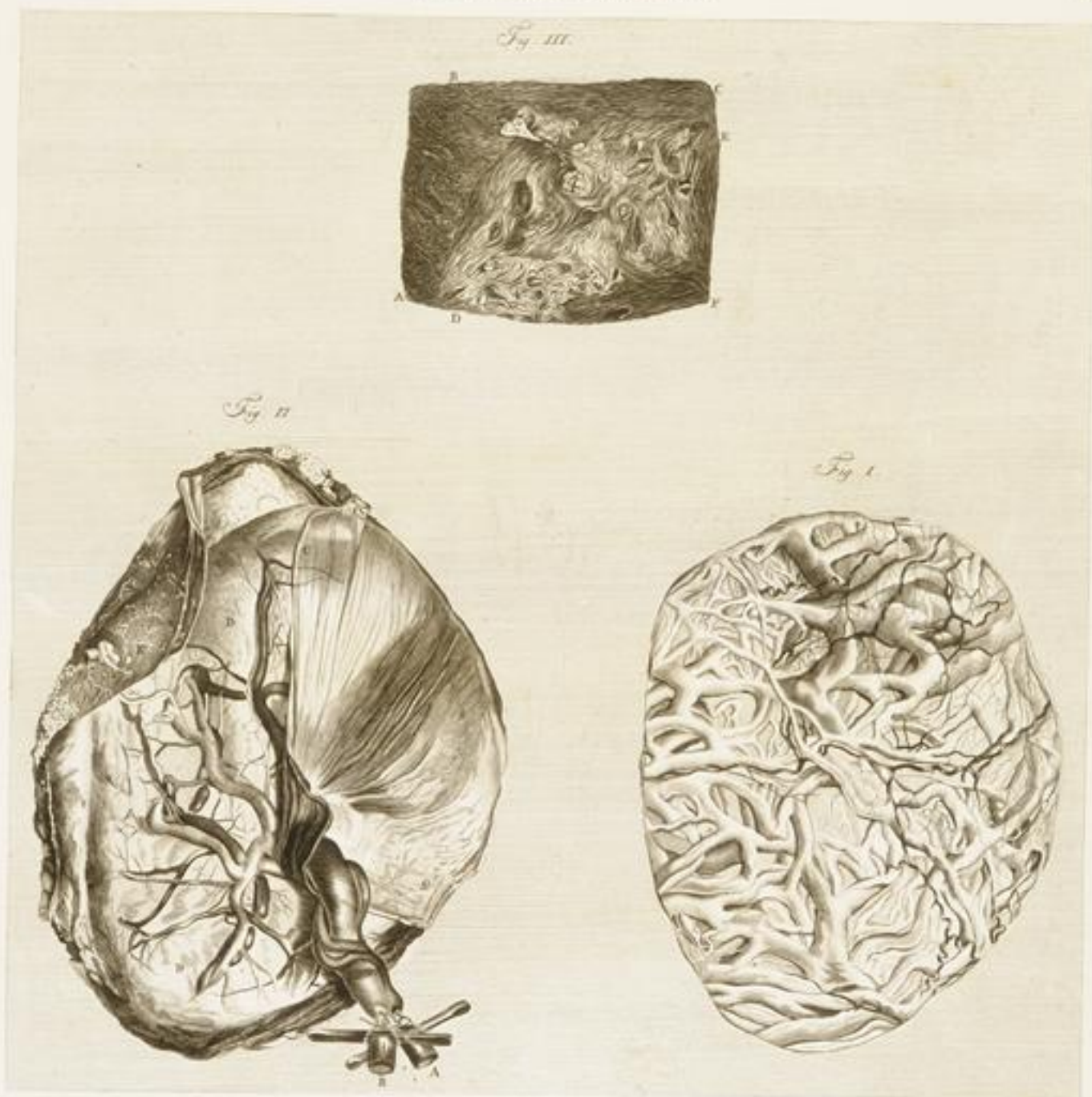




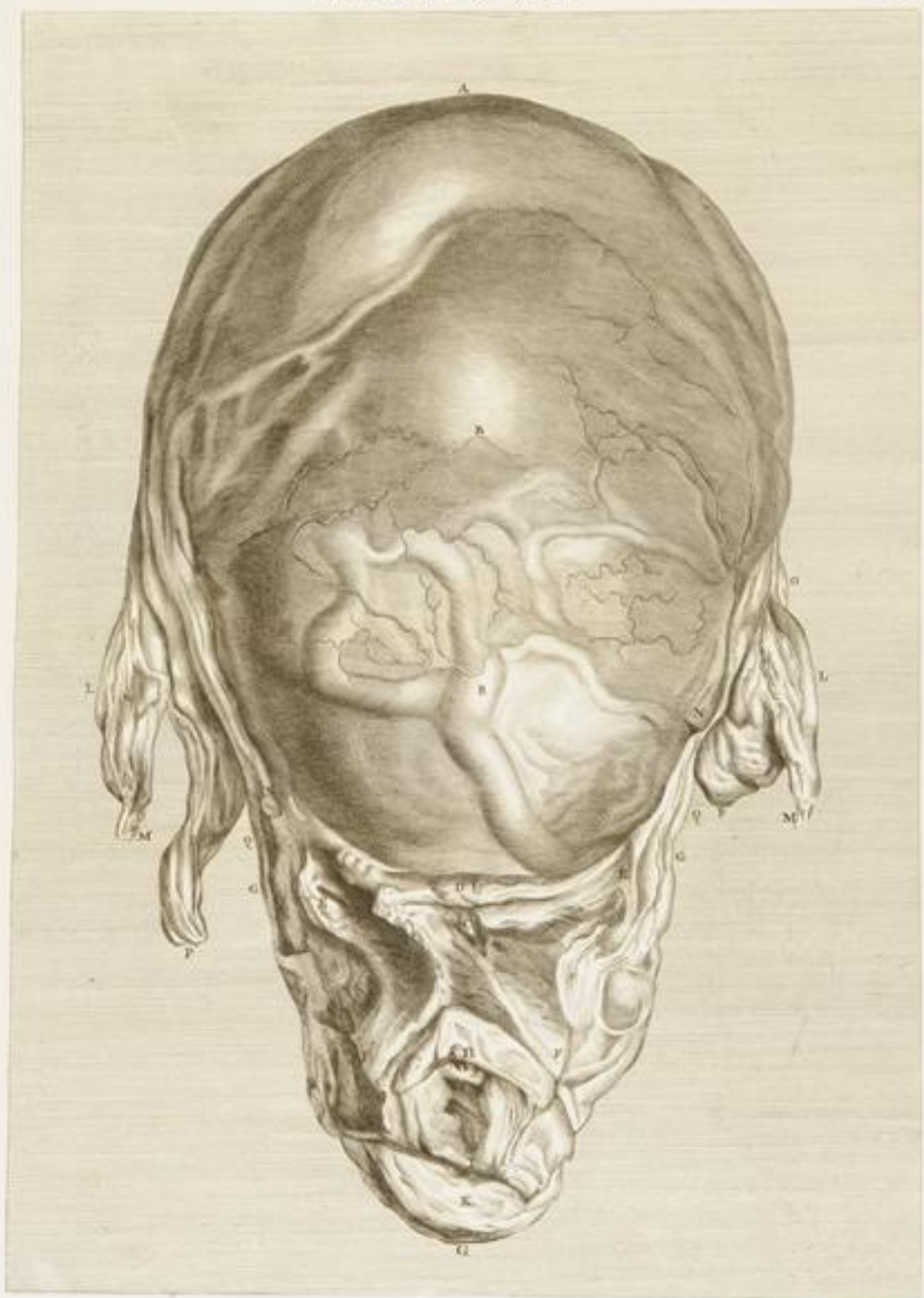
*W. Cheselden sculp.*



*W. Goussier sculp.*



*W. Cheselden sculp.*

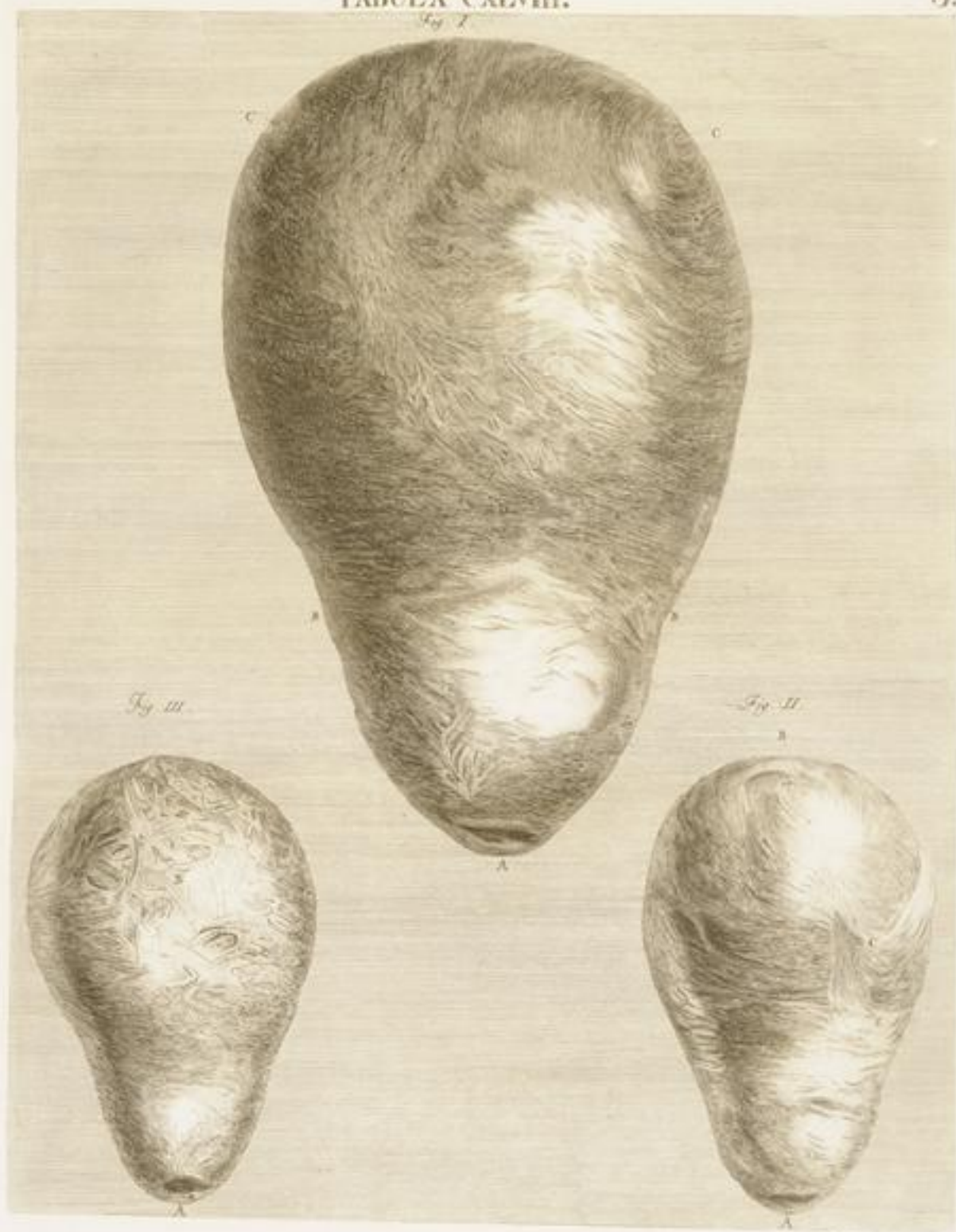


*W. Cheselden sculp.*



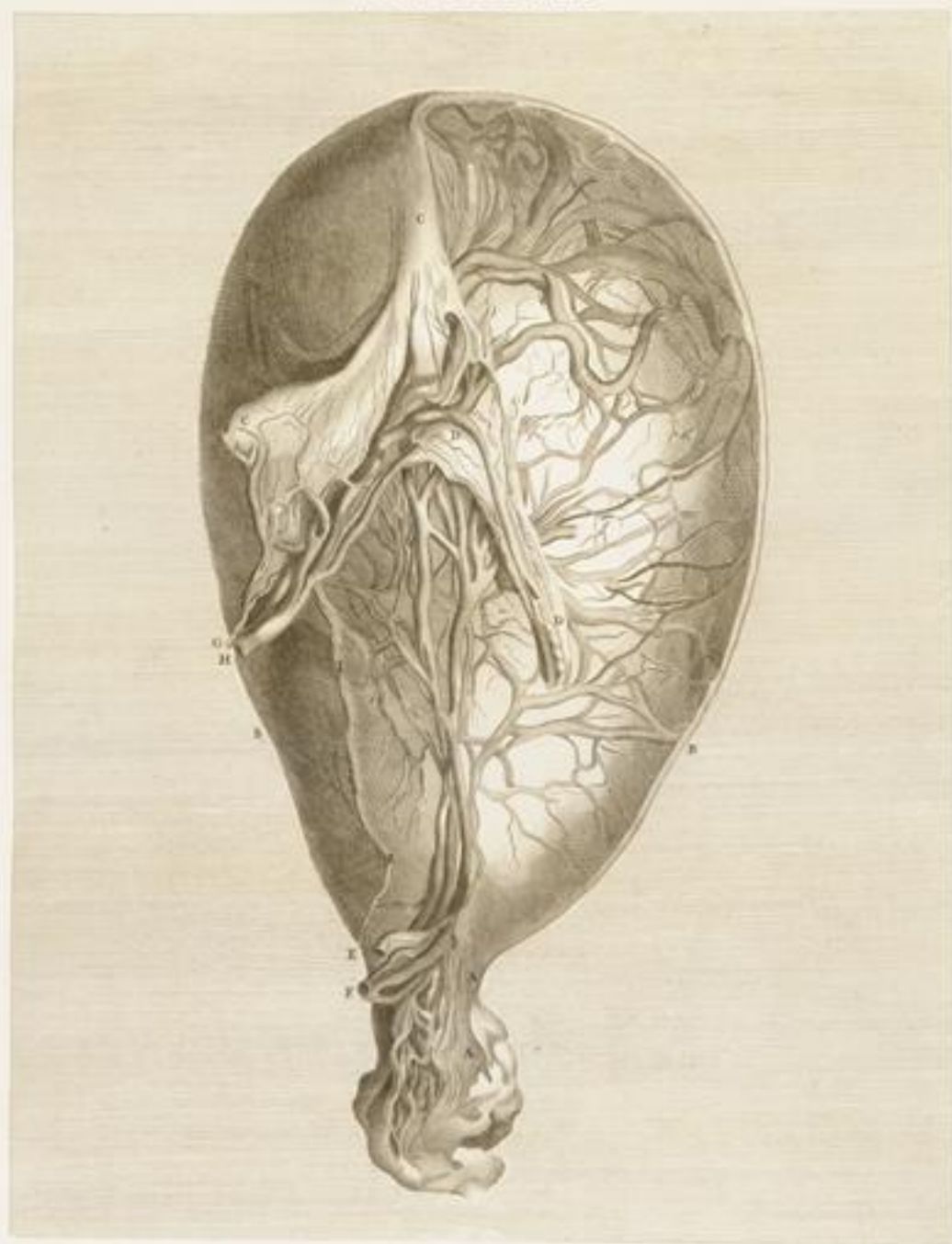


*W. Cheselden sculp.*



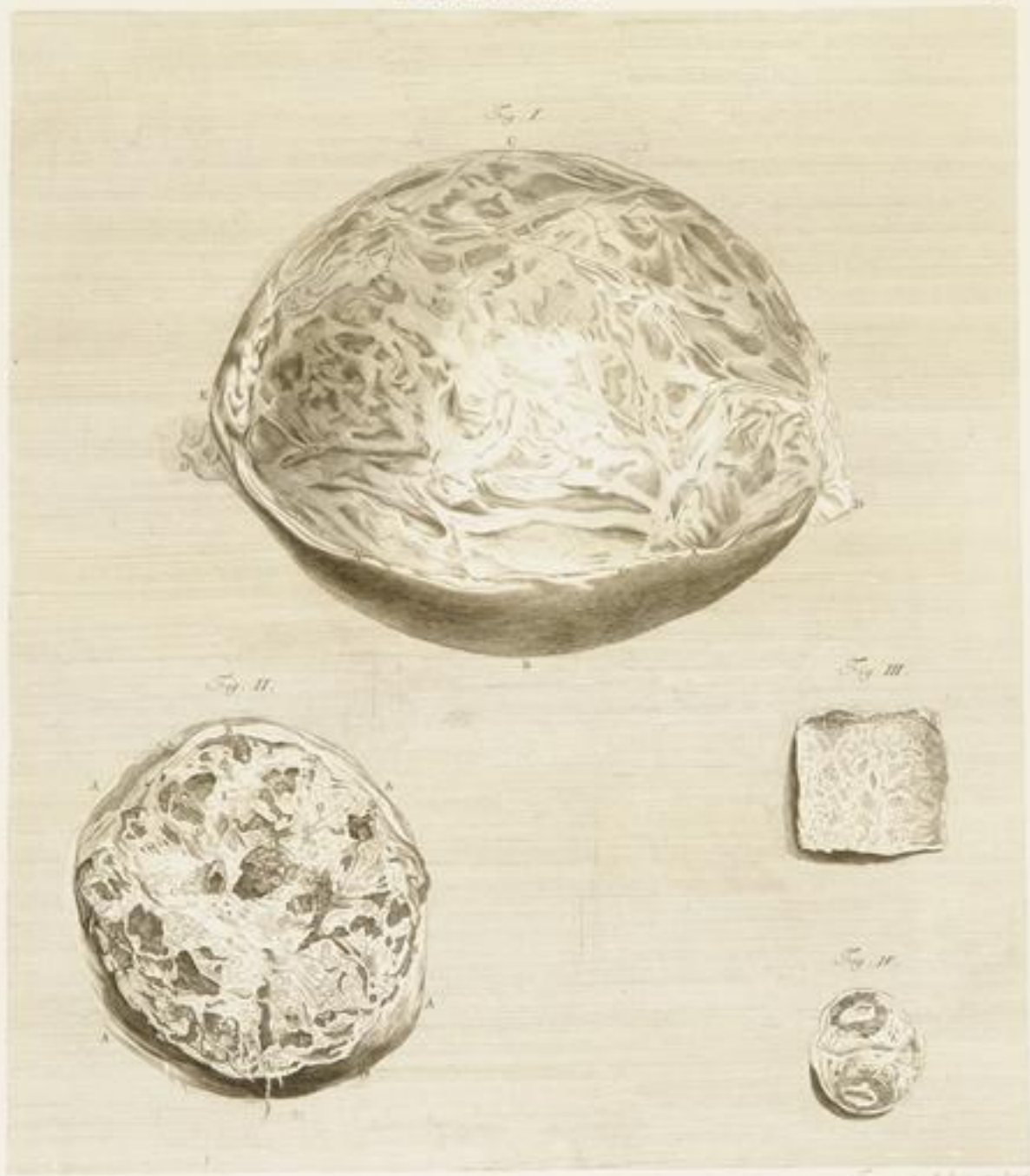








W. Woodcut





*W. Cheselden del.*



*W. Woodcut sculp.*









TABULA CLVIII.





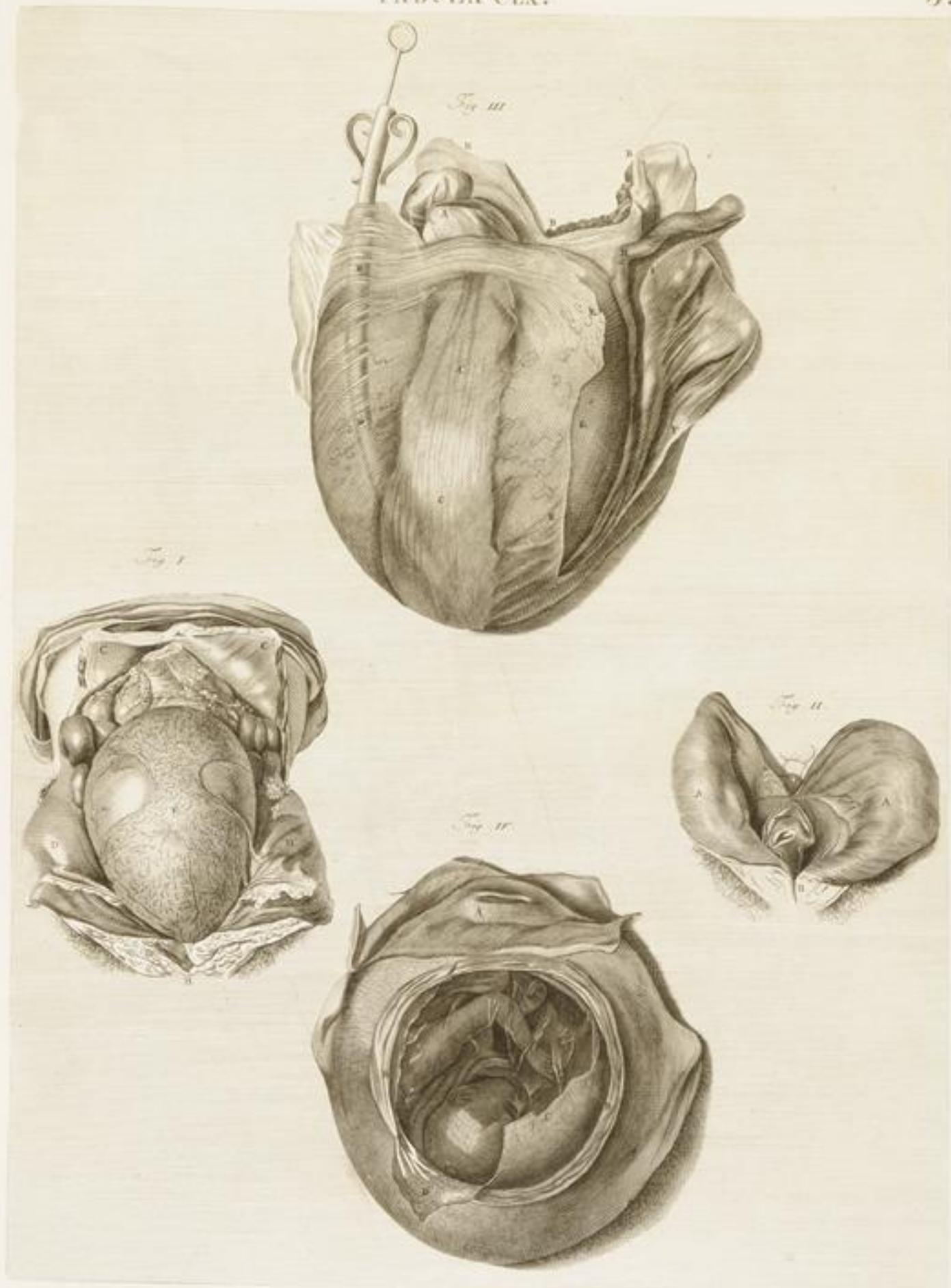










Fig. II.



Fig. III.







TABULA CLXVI.

5.



TABULA CLXVII.

5.



Tab. Clxvii.

TABULA CLXIX.





*W. Cheselden del.*

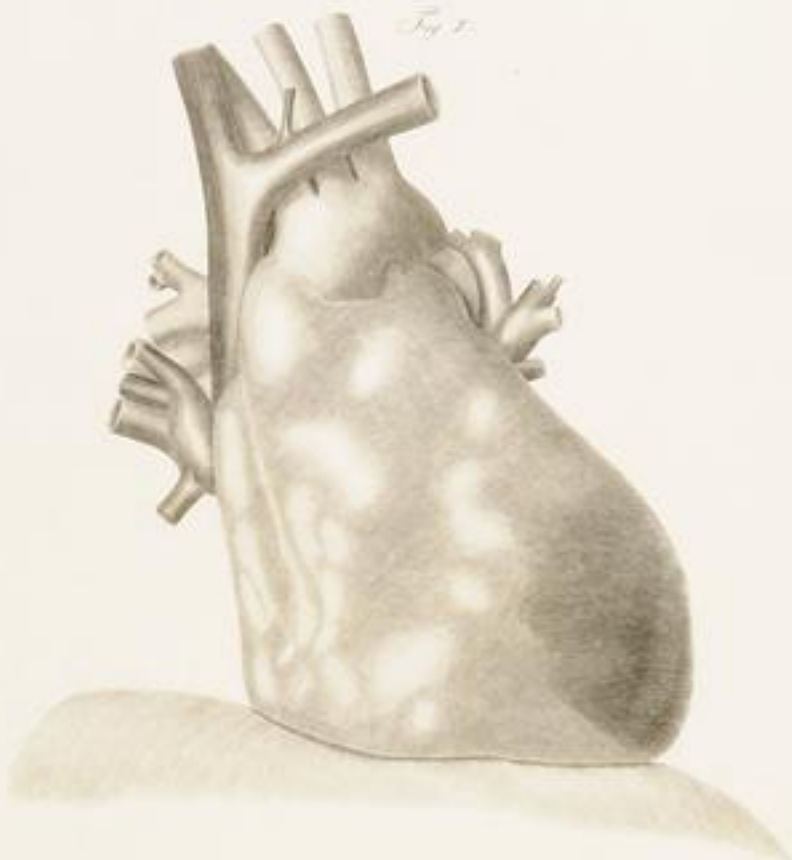


Fig. I.



Fig. III.



Fig. II.



Fig. IV.

*Tabulae Anatomicae Tab. CLXX. Anatomicae Tab. CLXX.*

*Anatomicae Tab. CLXX.*

TABULA CLXXI.





*Tabula CLXXII.*





*Cor Cordis, et pericardium, et coronariae.*

*Cor Cordis, et pericardium, et coronariae.*



*Cor Cordis, et per ipsum dextram dextram*

*Cor Cordis, et per ipsum dextram dextram*

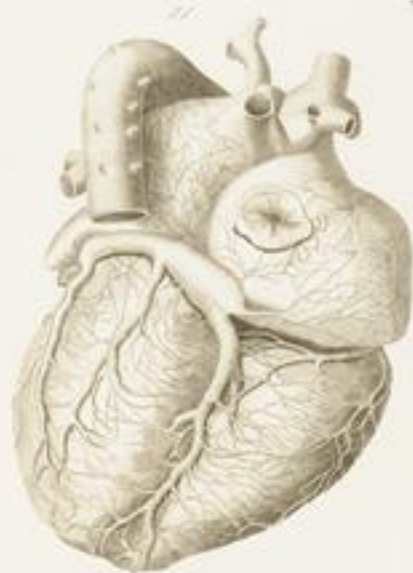
TABULA CLXXV.

3.



*Plac. de la Roche*

TABULA CLXXVI.





TABULA CLXXVII.

*Thomas Blizard fecit*



Tab. Clxxviii.





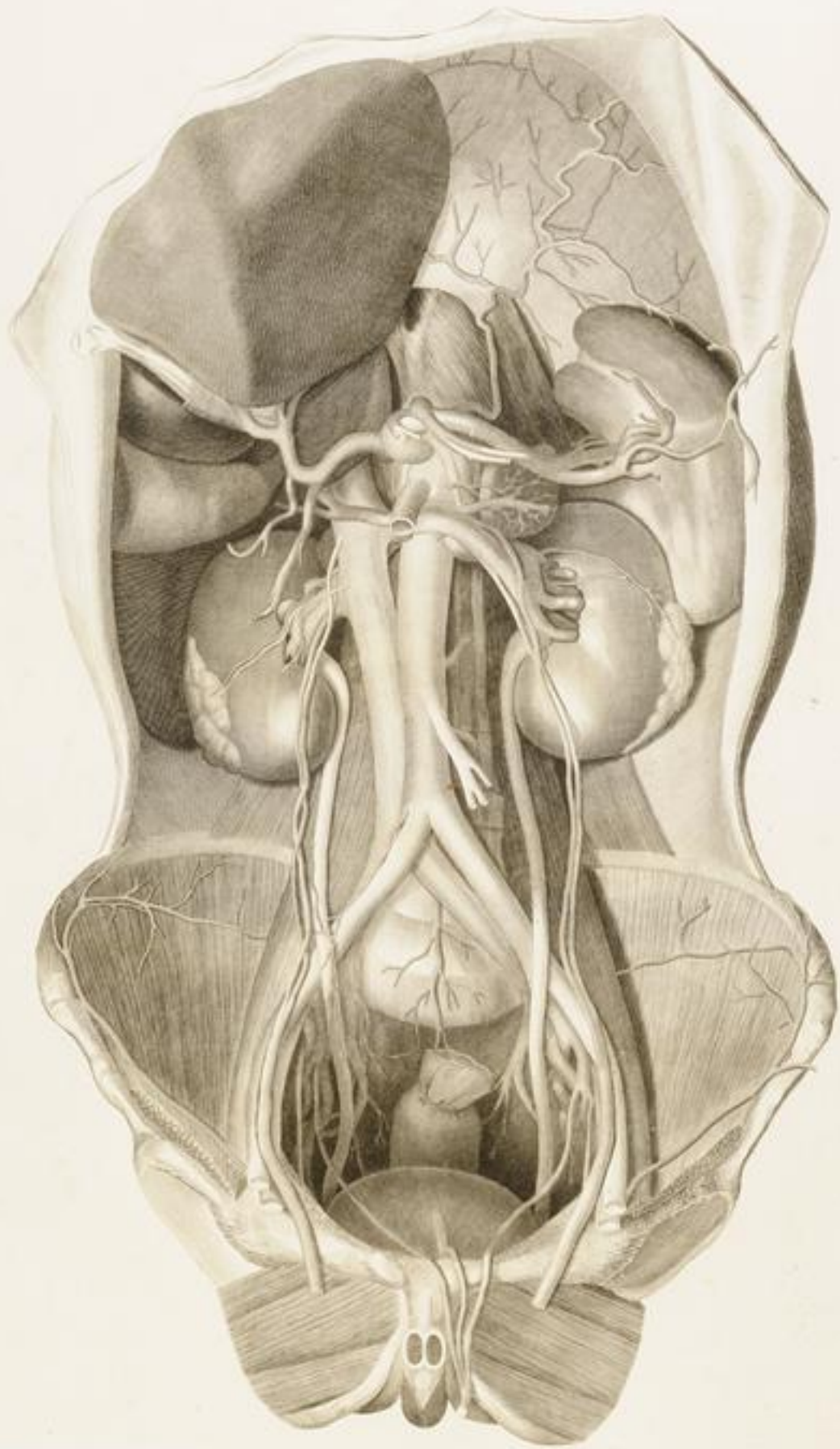
*W. Cheselden sculp.*





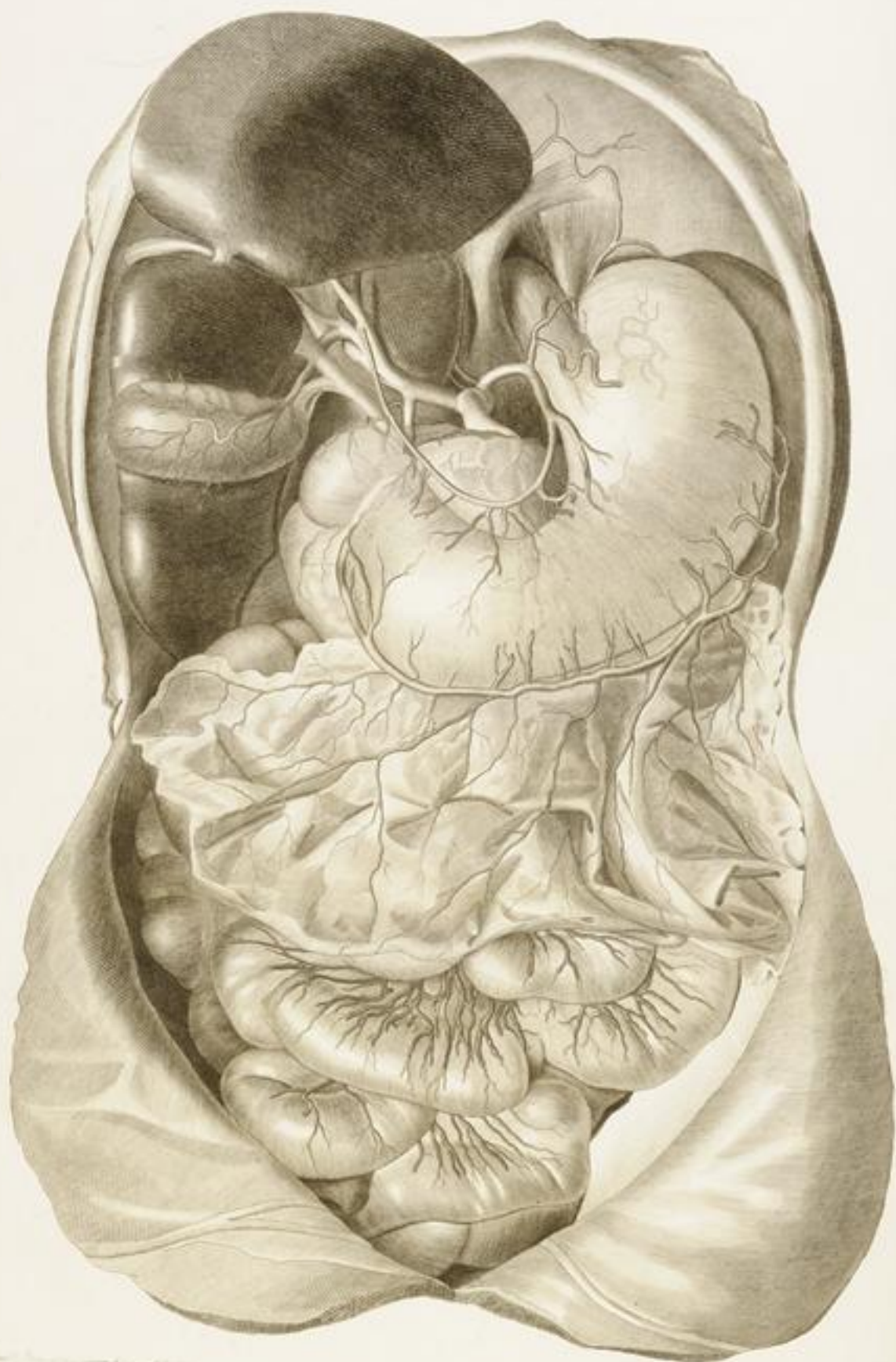


*Tab. Clxxxii.*



*Andreas Vesalius delinavit*

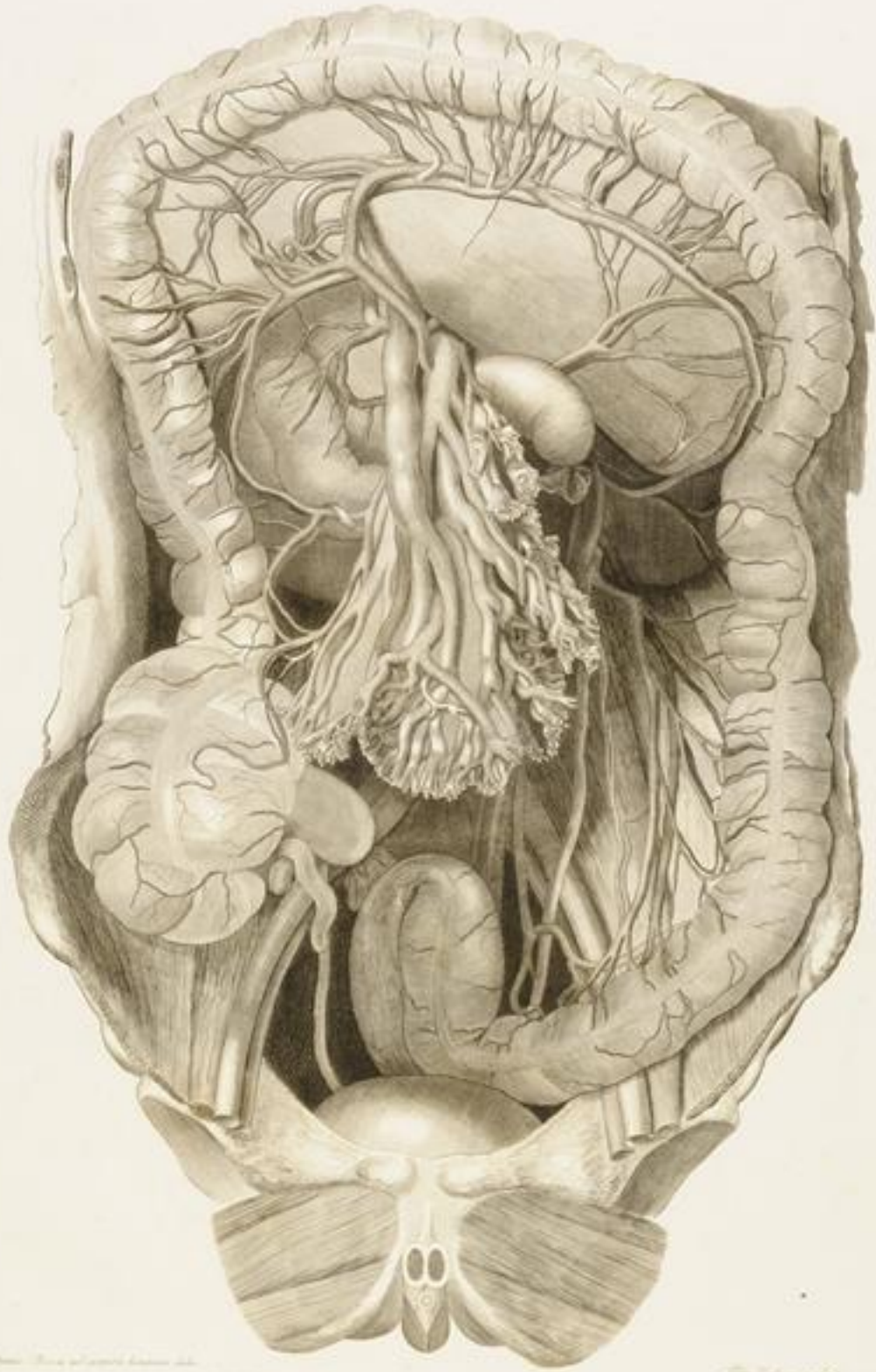
*W. Costenoble fecit*





*Capitulum Pulmonum et vasa hinc inde delata*

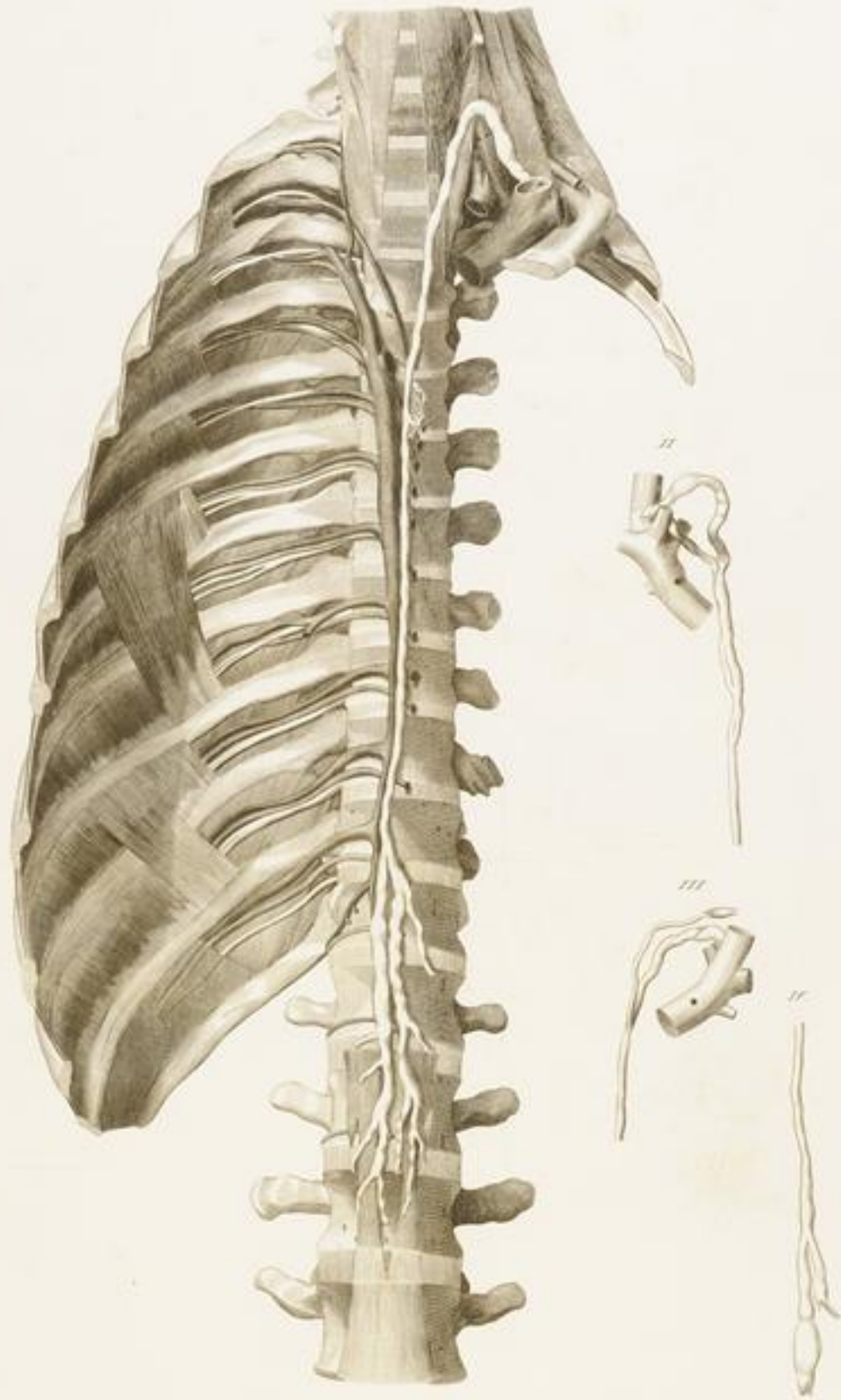
*Tab. Tabula superior*





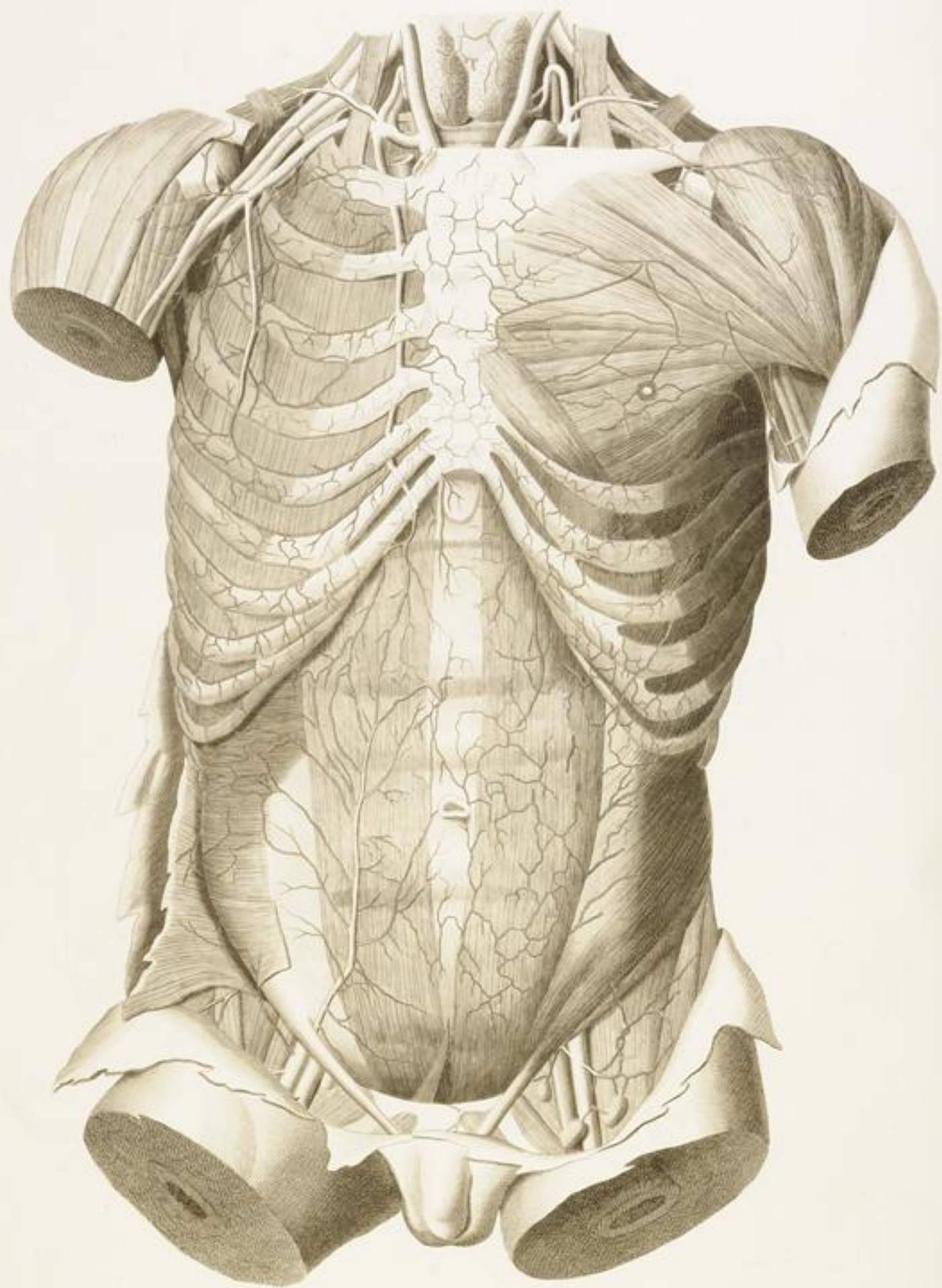
*Tabulae Anatomicae*

*Tabulae Anatomicae*



*W. Cheselden del.*  
*J. Smith sculp.*





*W. Cheselden del.*



*Robt. Zuckerman sculp.*







*W. Cheselden sculp.*



*Tabula CXCIV. Fig. I.*

*Tabula CXCIV. Fig. II.*

Fig. I.



*Capitulum. Pars superior brachii dexter.*

Fig. II.



*Pars inferior brachii dexter.*

Fig. I.

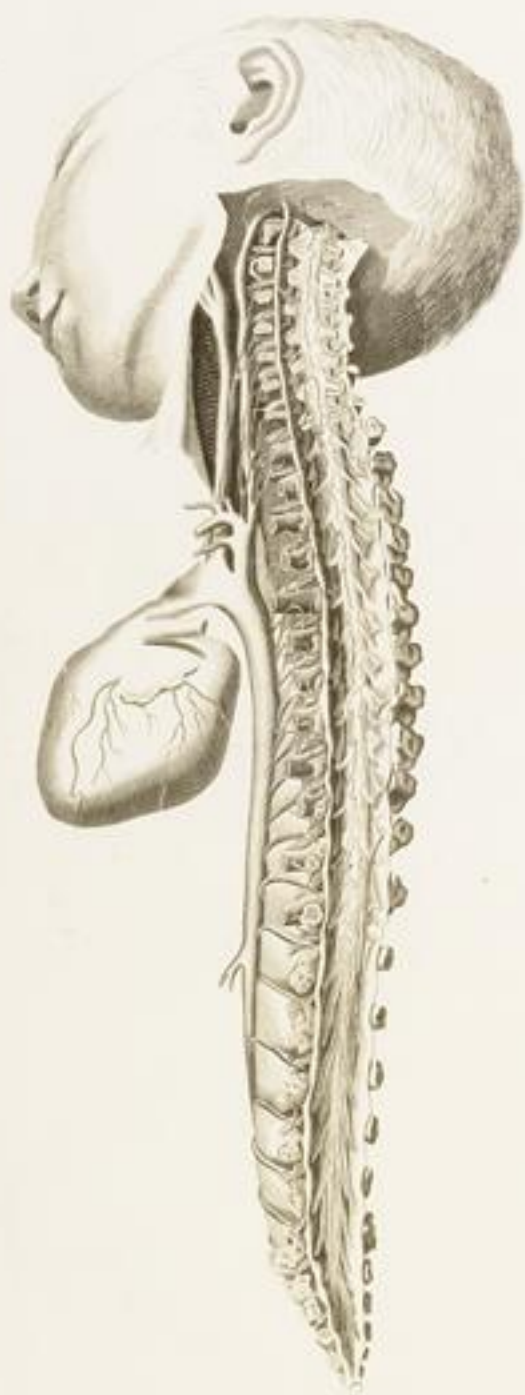
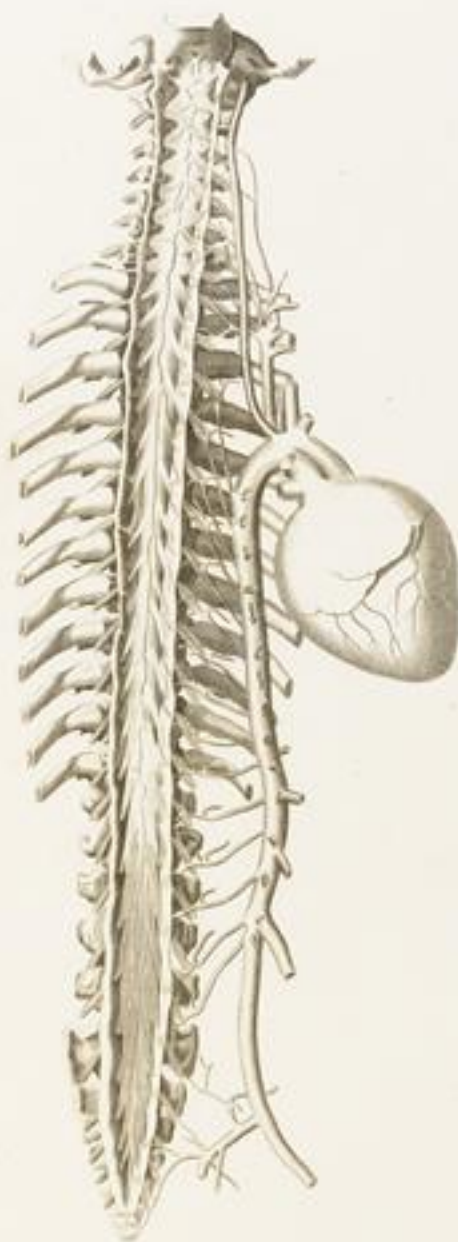
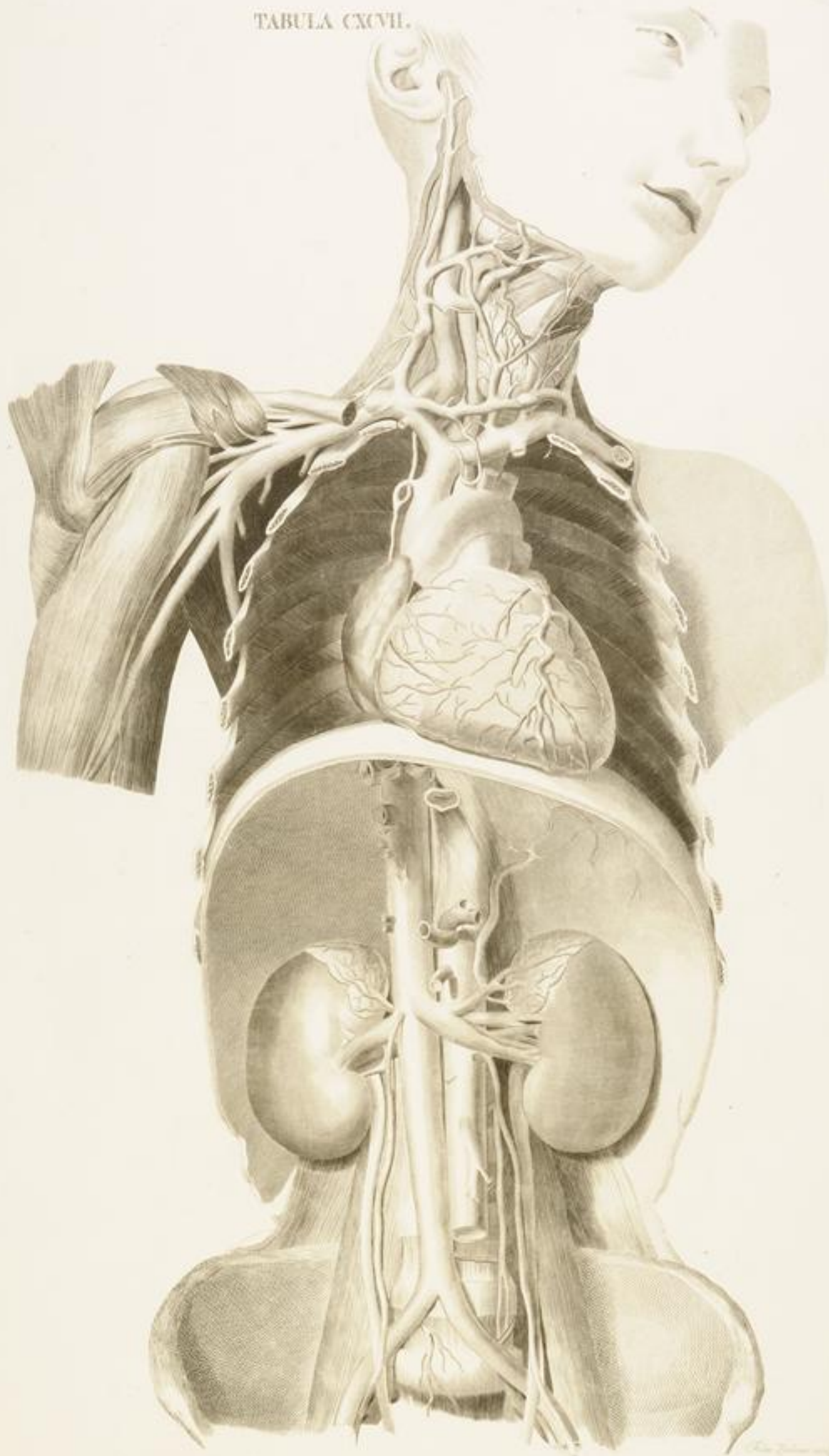


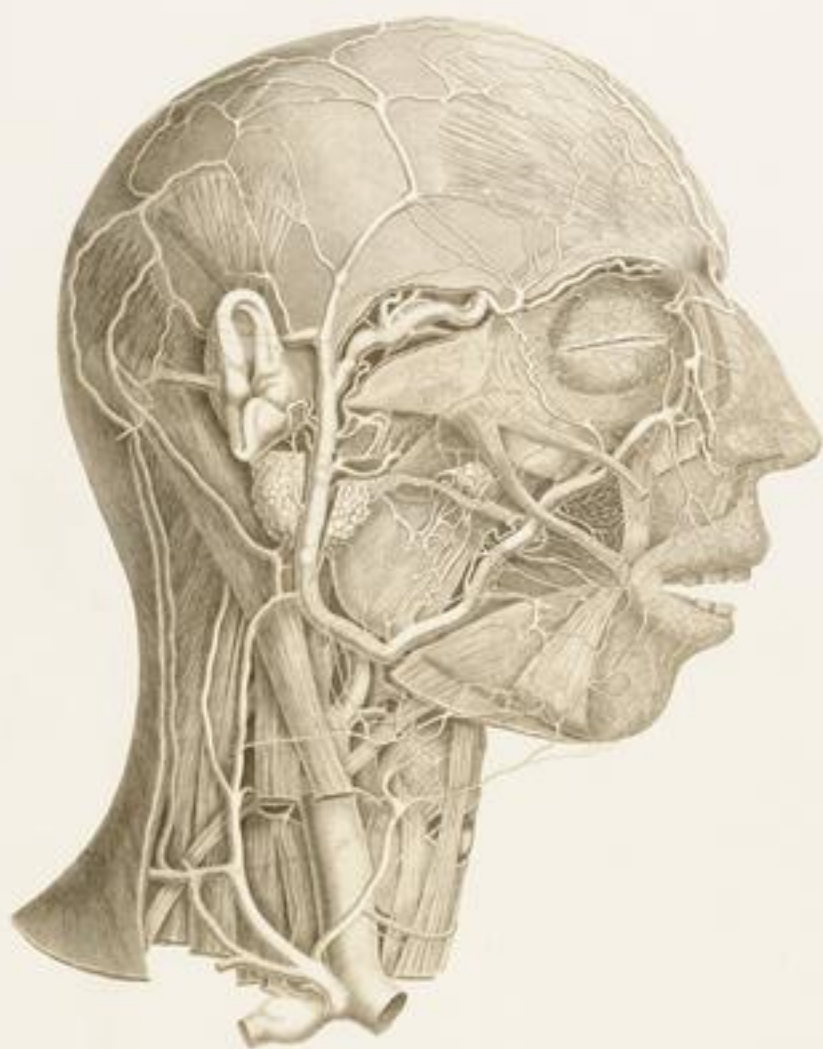
Fig. II.



*Robt. Zucchi sculp.*







*W. Cheselden del.*





TABULA CC.

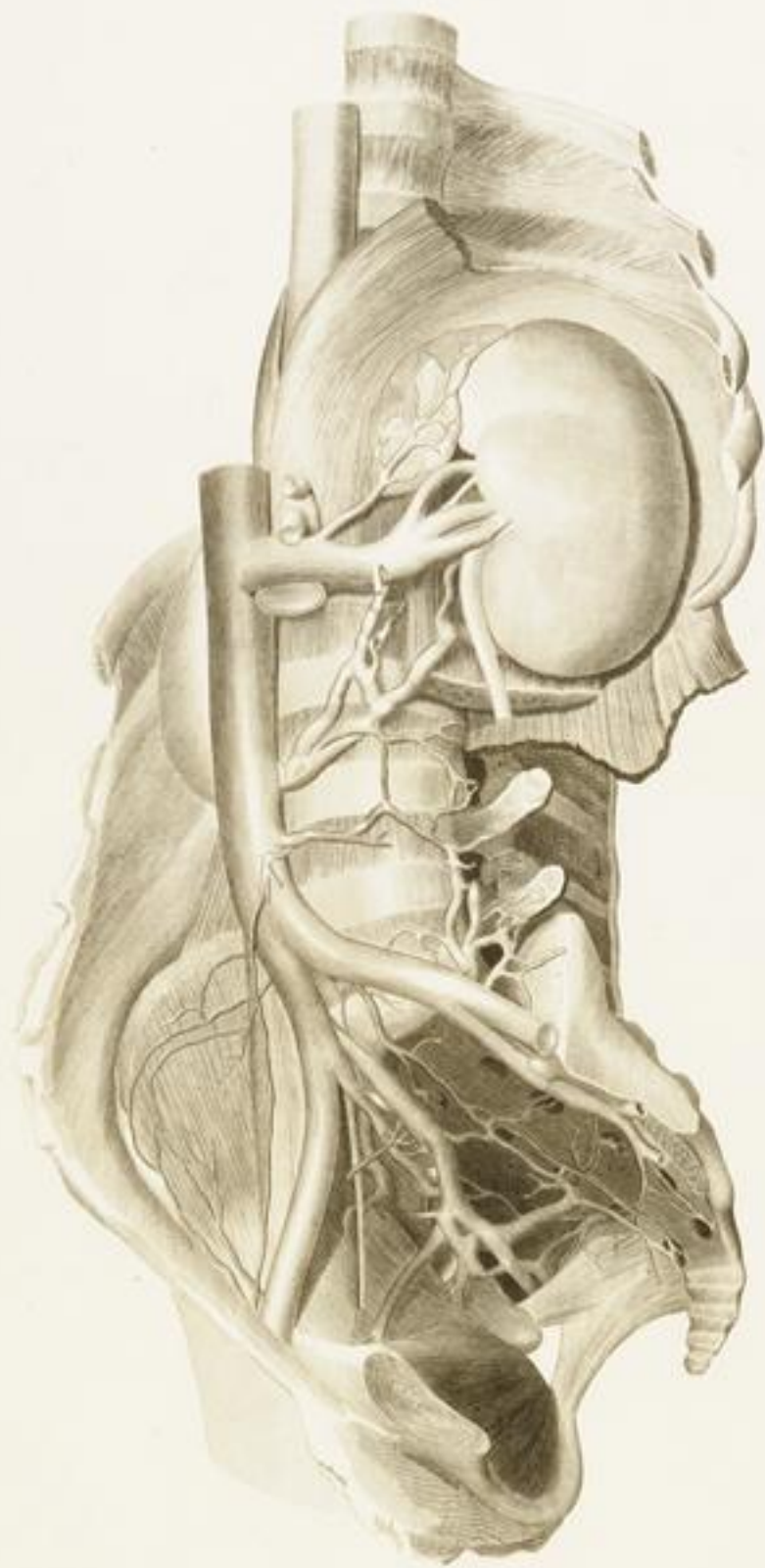


3.

*Handwritten text at the bottom left of the page.*

*Handwritten text at the bottom right of the page.*





*Tabula CCII. Anatomia*

*Tabula CCII. Anatomia*



*C. S. de Meunier delin.*



*P. J. de Meunier sculp.*



*Ch. Goussier del.*

*Ch. Goussier sculp.*