

FORNIZIONE  
DELLA REFFESSA  
COSTE



I



III



II

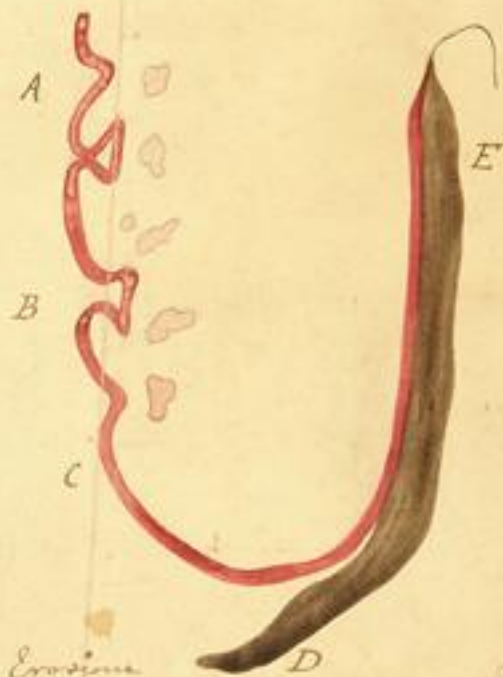




Stato normale 1.



Ectropium cong. prothlorica (part) 2.



Erosione 3.



Ulcerazione 4.



Chemosi della mucosa 5.



Ectropium patologico 6.



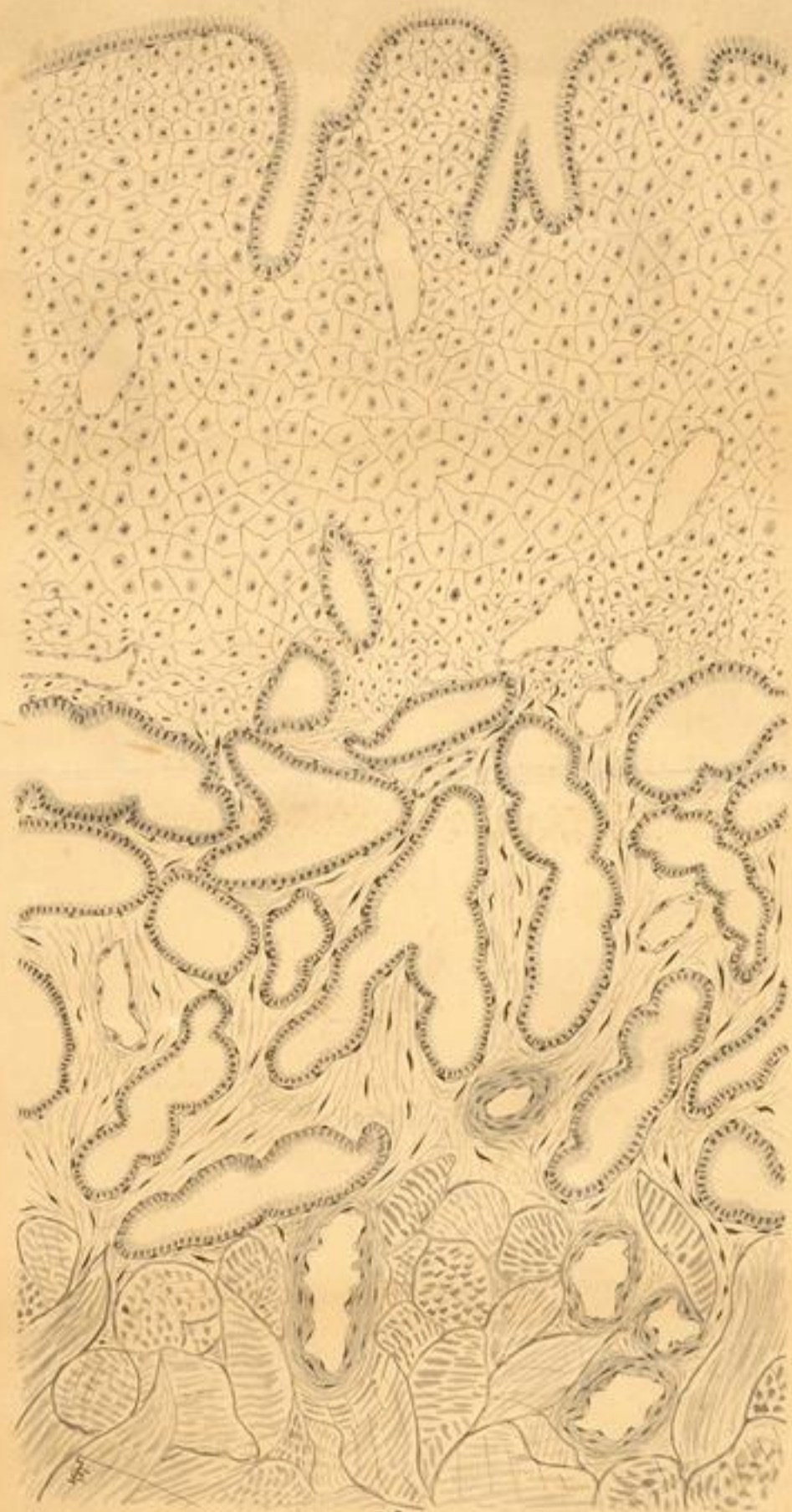
Pseudocystite (ectropium in apparenza) 7.



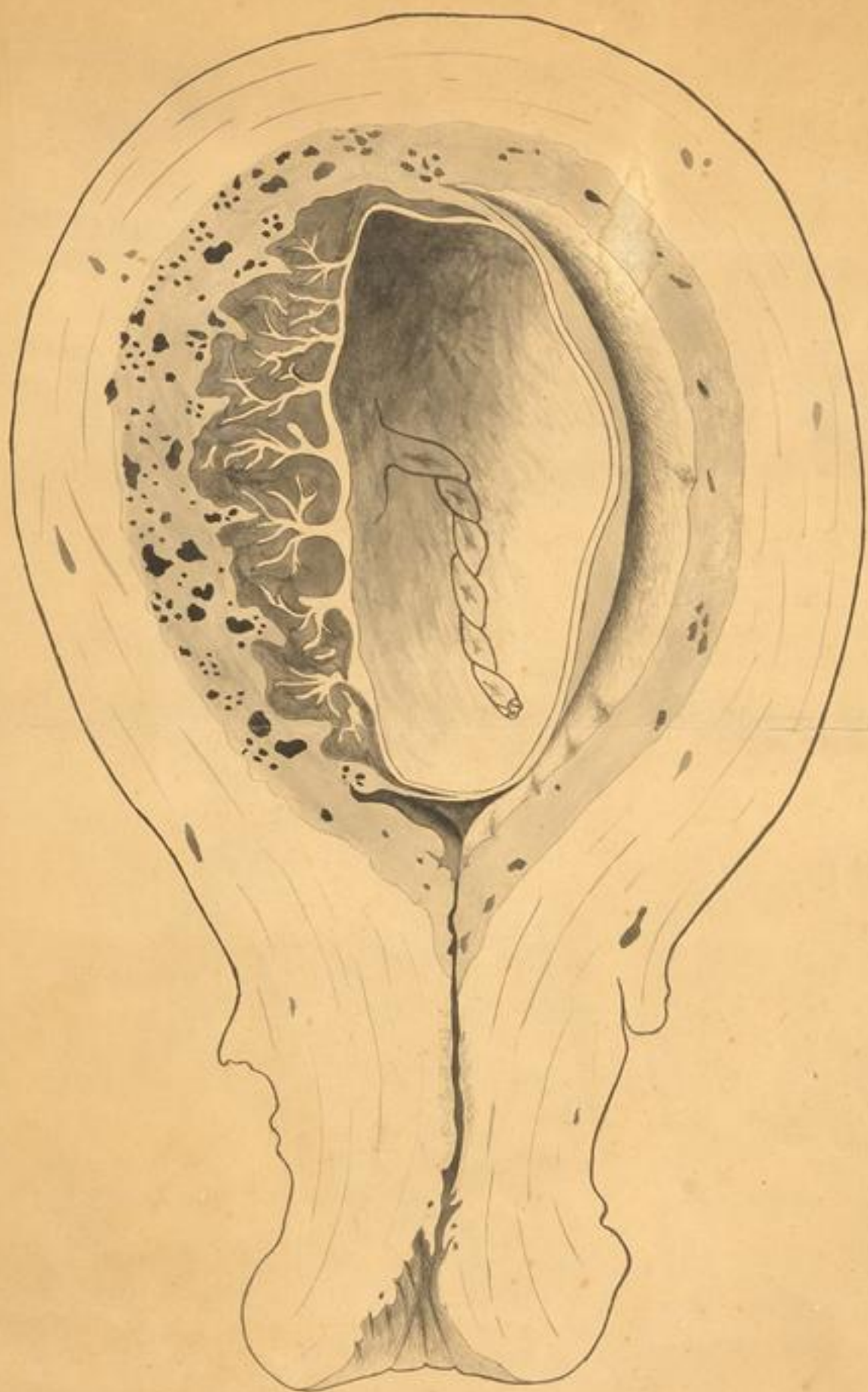
Ectropium pseudo-cystite 8.

Villi choriali di un uovo  
di 5 settimane





DUMM Grundriss / Geb. Seite 64.



107

Baumh. Anatom. Tab. 57.

3



tav. A

Dal Guysi  
1927

8



C.C.

O.I.

**Tav. B**

*Dal Cuzzi*

1927

9



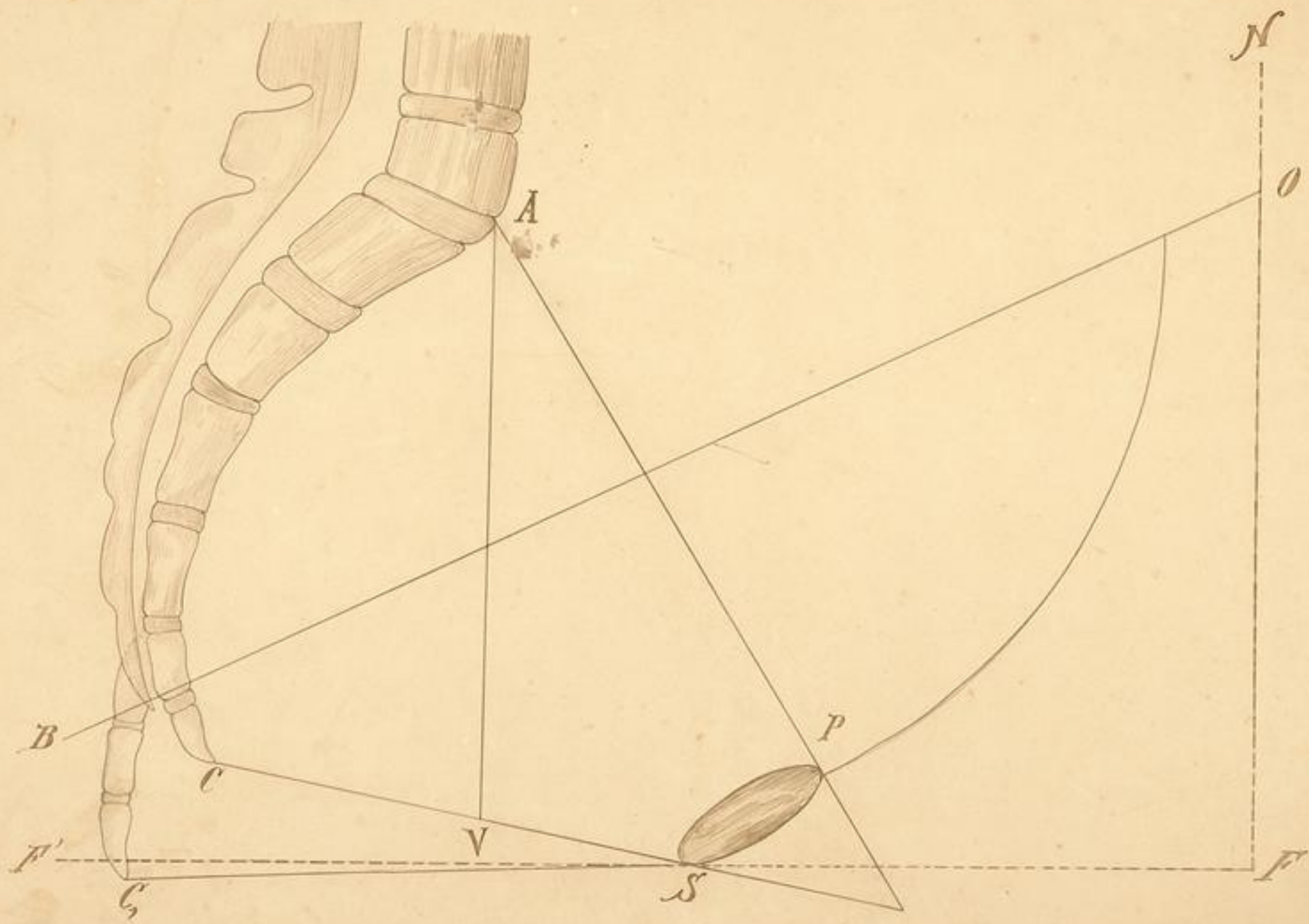


lav. **D**

Dal Cussi

1927

11



*Fig. 11*

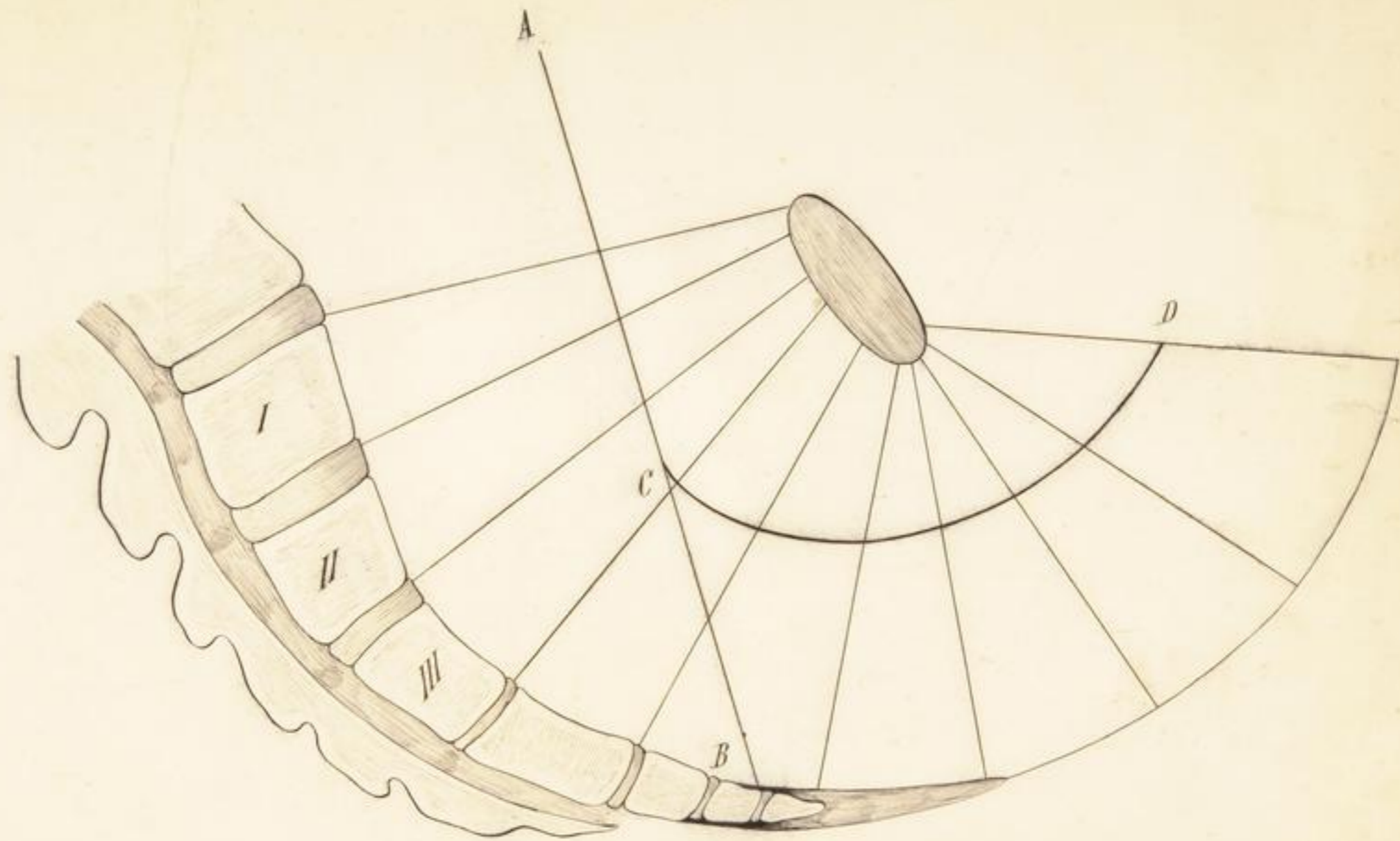
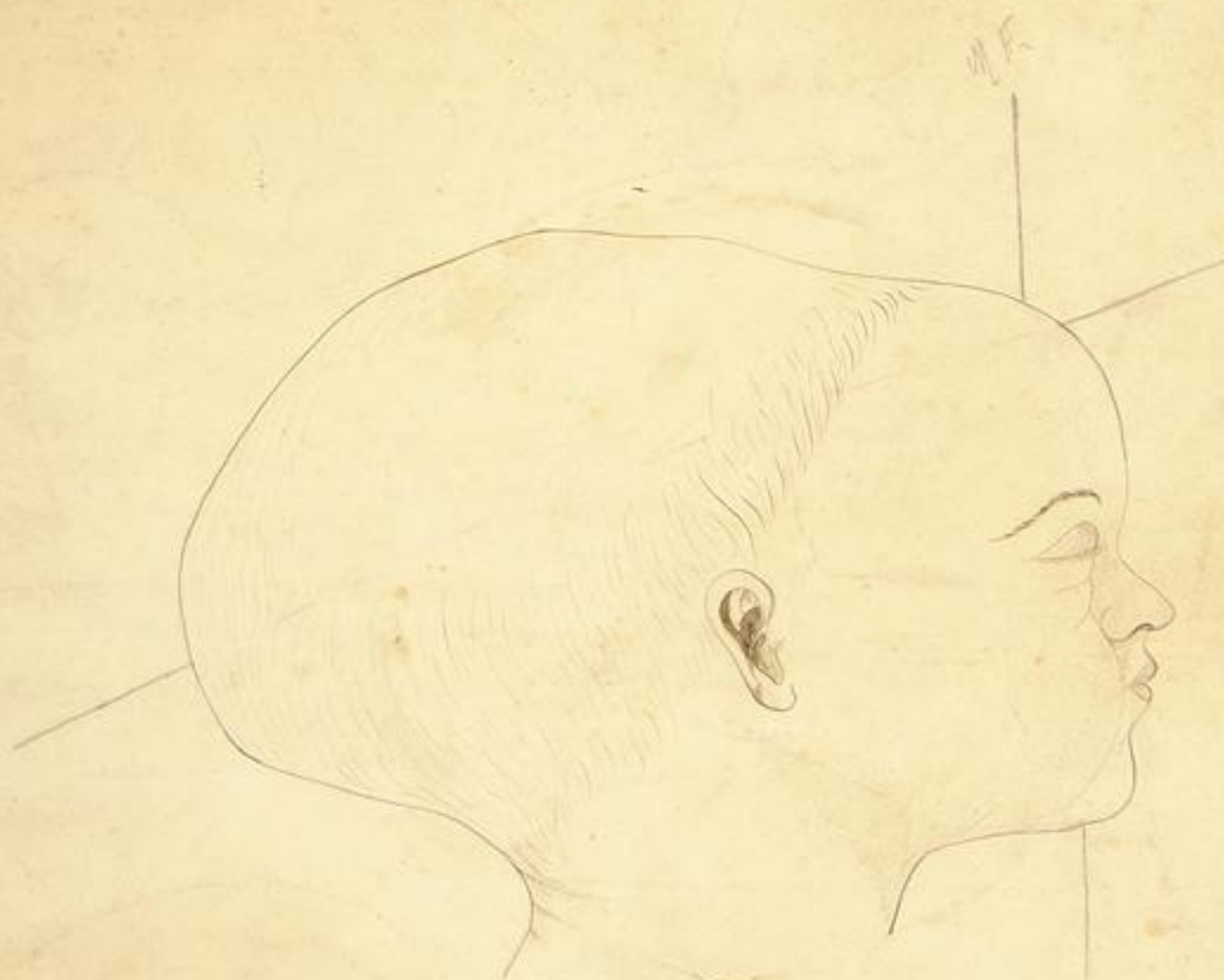


Fig. 111 / 112.  
Plate 1. fig. 111.



13

12/11

Cupis

19/131



C. GUZZI  
1892



Fig. 2a



Fig. 2b

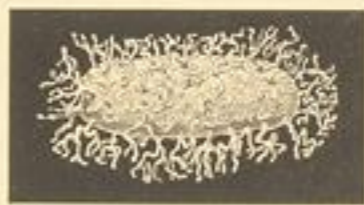


Fig. 3a

Fig. 1, 2, 2a—b: Uterus mit Ei von 7—8 Tagen.  
 Fig. 1, 2, 2a—b: Uterus with ovum of 7—8 days.  
 Fig. 1, 2, 2a—b: Utérus et oeuf de 7 à 8 jours.

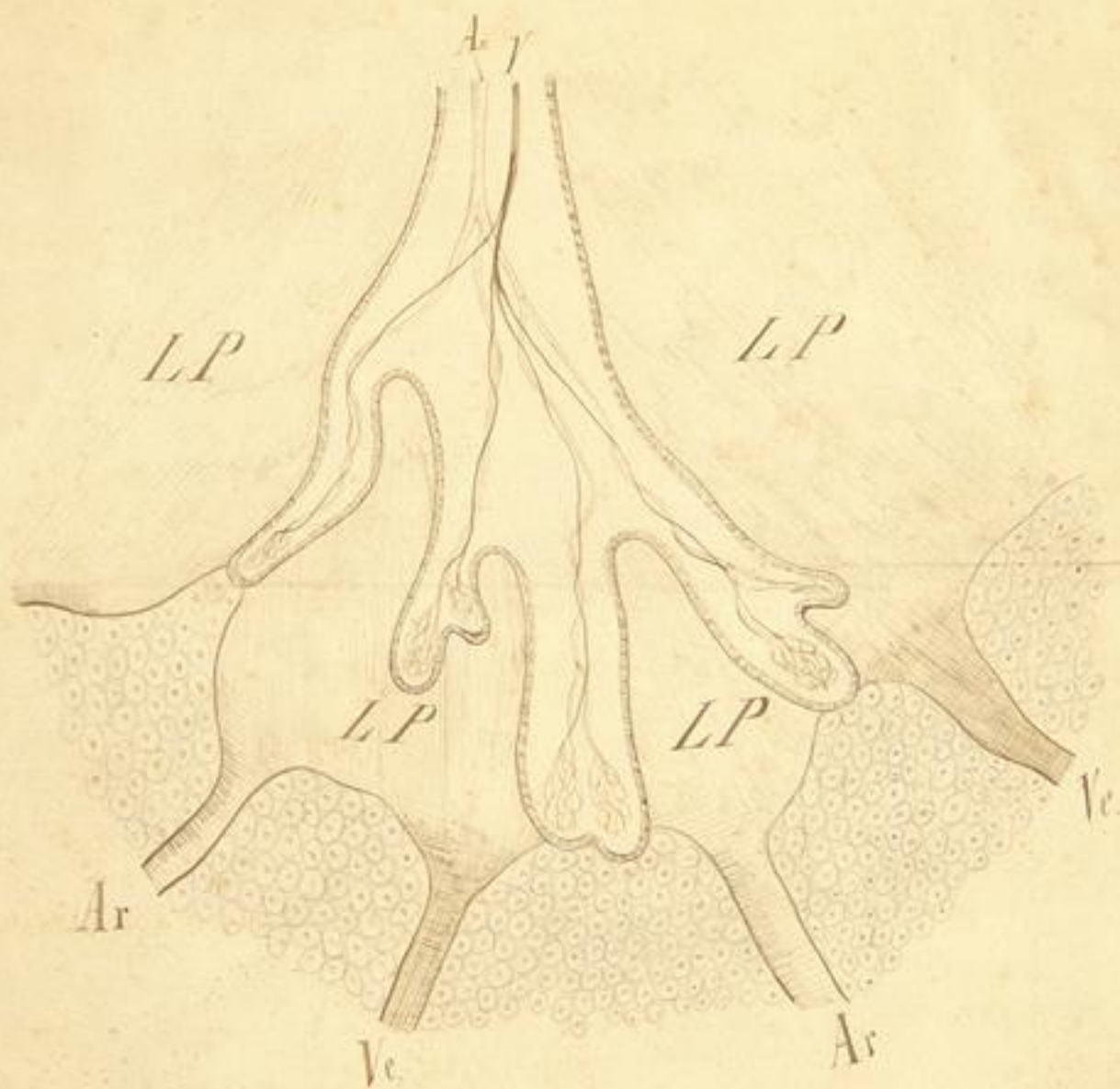
Fig. 3 und 3a: Uterus mit Ei von ca. 14 Tagen.  
 Fig. 3 and 3a: Uterus with ovum of ca. 2 weeks.  
 Fig. 3 et 3a: Utérus et oeuf de ca. 15 jours.



**Fig. 6:** Uterus mit Fötus von  $3\frac{1}{2}$  Monaten. Beginnende Placenta praevia.  
**Fig. 6:** Uterus with foetus of  $3\frac{1}{2}$  months. Beginning placenta praevia.  
**Fig. 6:** Utérus et foetus de 3 mois et demi. Placenta praevia au début.



**Fig. 7:** Uterus mit Fötus von 4 Monaten.  
**Fig. 7:** Uterus with foetus of 4 months.  
**Fig. 7:** Utérus et foetus de 4 mois.



6

*Sibemont*

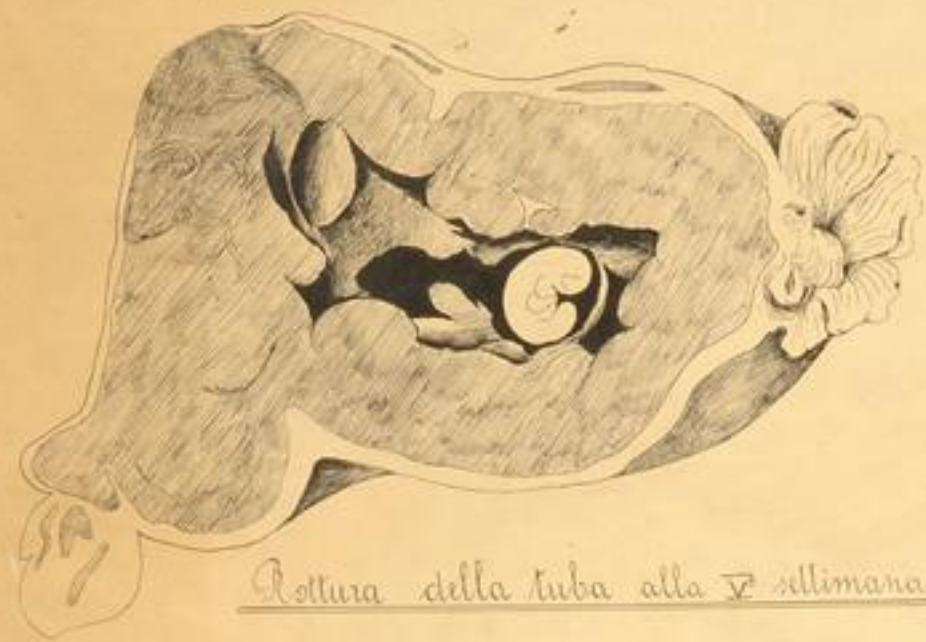




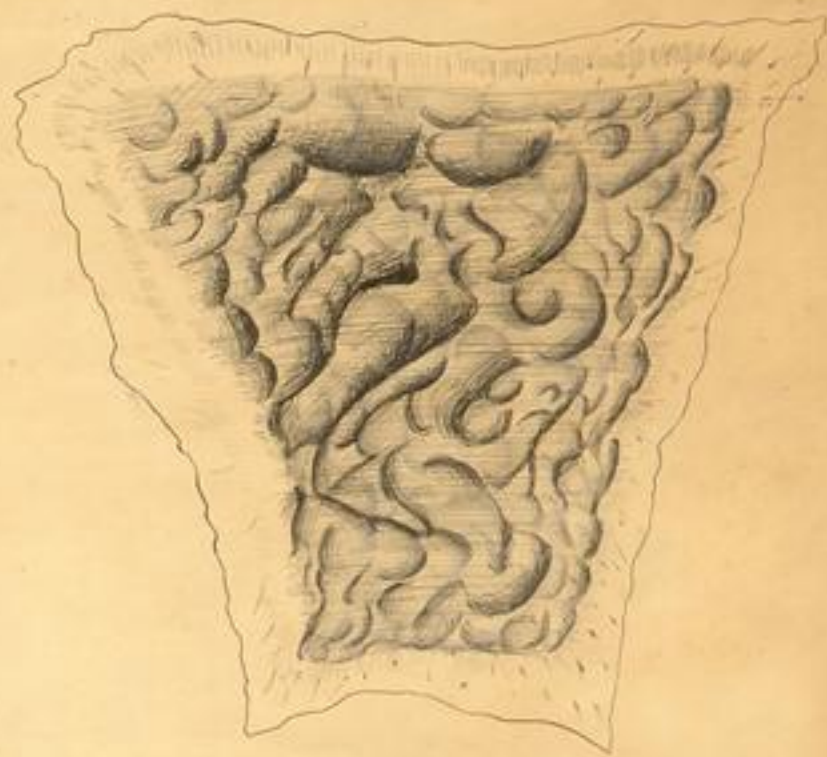
**MODO D'IMPEGNO  
DELLA TESTA IN UN  
BACINO PIATTO**



**COME LA TESTA  
SUPERA LO STRETTO  
SUPERIORE**



Rottura della tuba alla 7<sup>a</sup> settimana



Decidua alla fine del 1<sup>o</sup> mes di gravidanza



(2-3-4-5-6) Gravidanza extra-uterina



Rottura della tuba



Aborto tubarico