

GEBURTSHÜFLICHER



in 48 Tafeln und erklärendem Texte

von

D^r H. F. KILIAN,

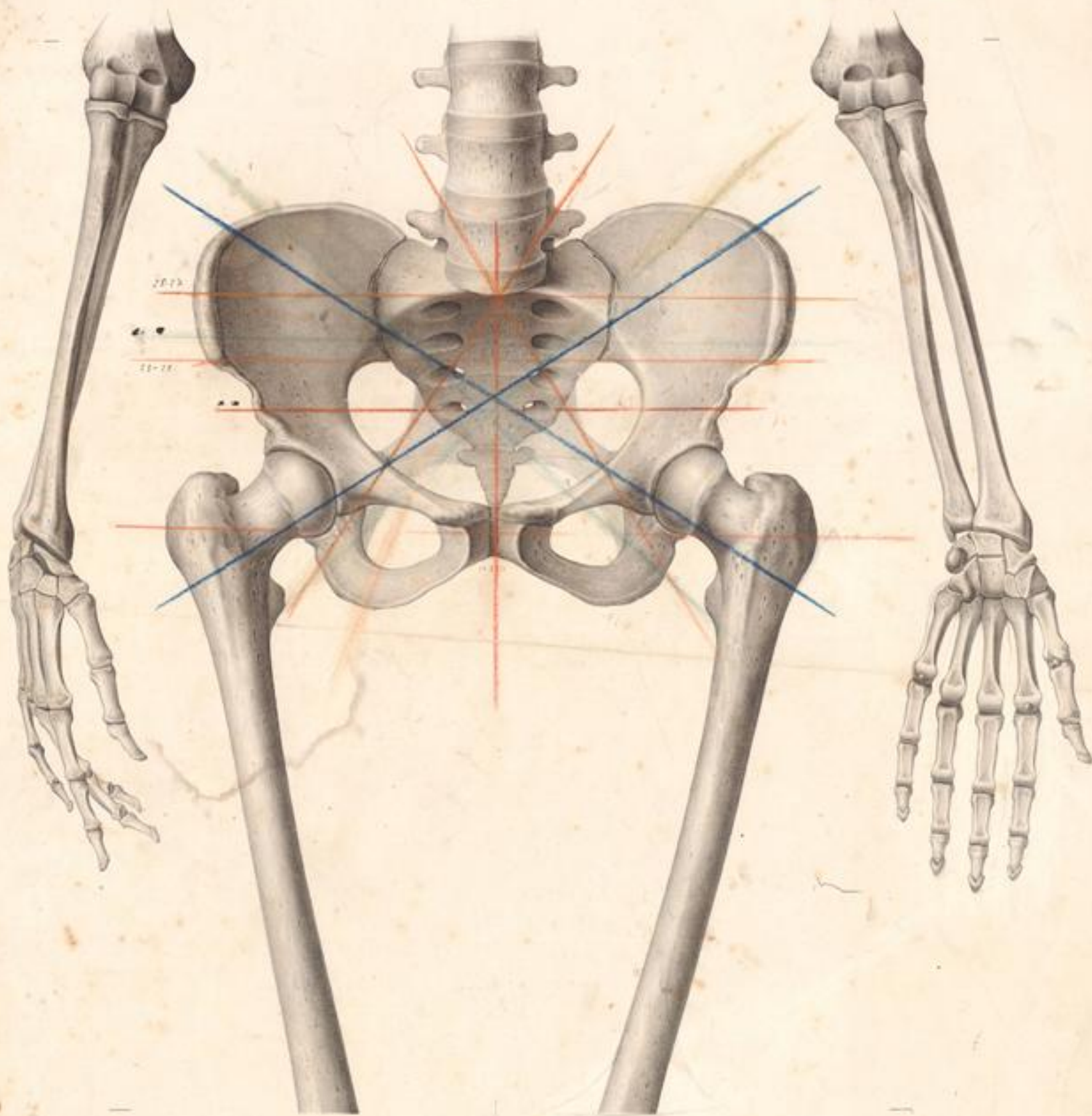
ordentl. Professor der Geburtshülfe und geburtshülfflichen
Klinik, und Director des geburtshülfflichen Institutes an der
Universität zu Bonn.

DUSSELDORF

Verlag von Arnz & C^o



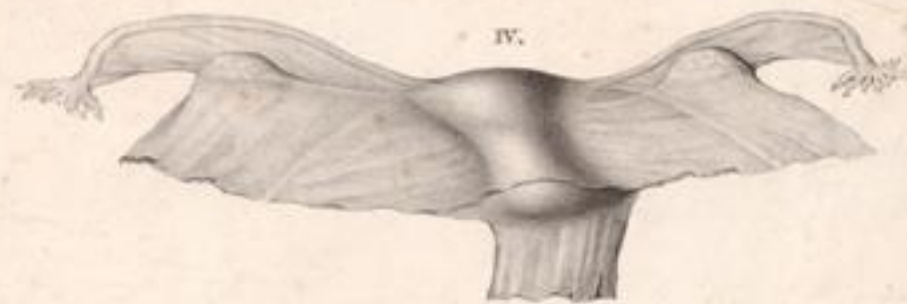
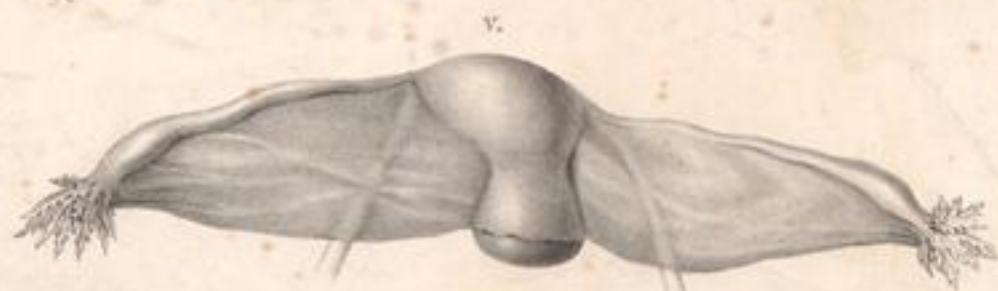
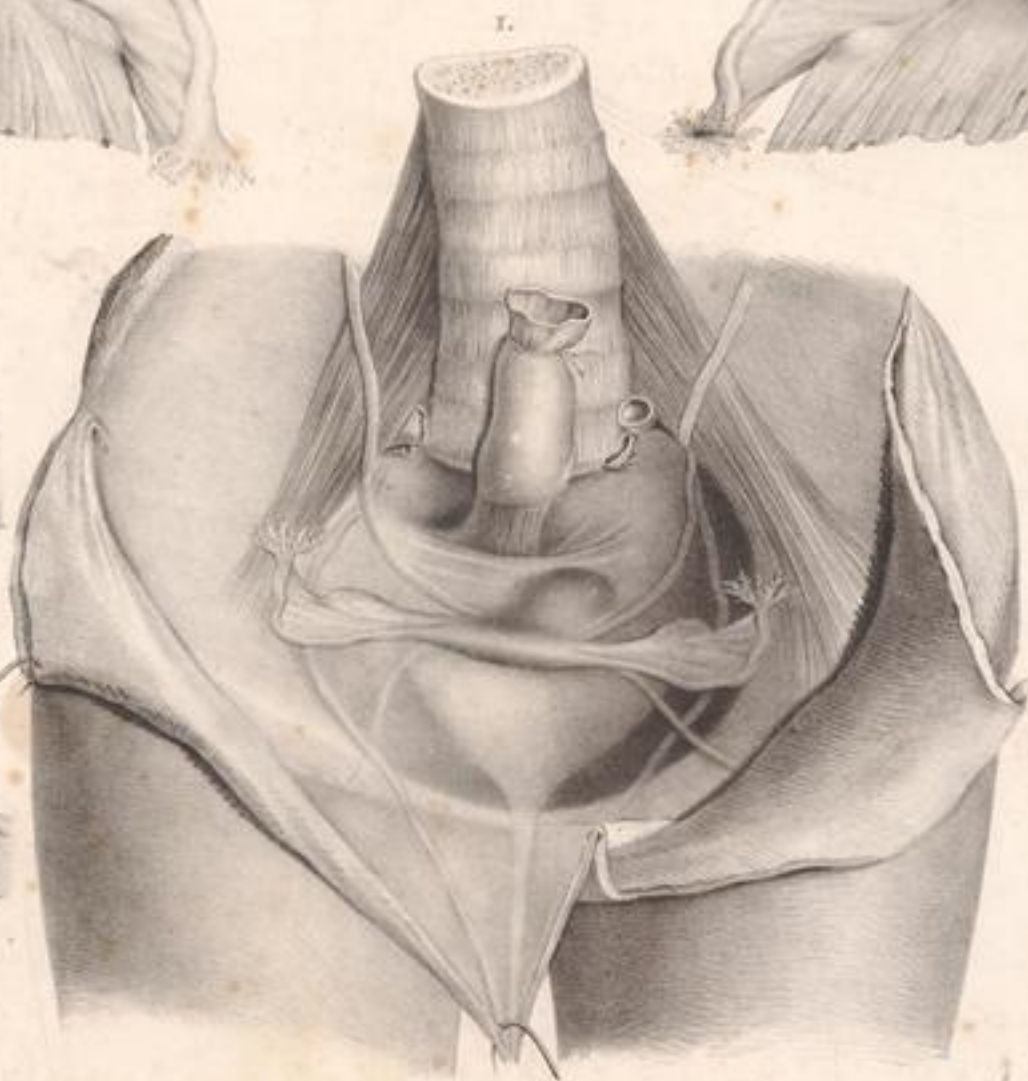


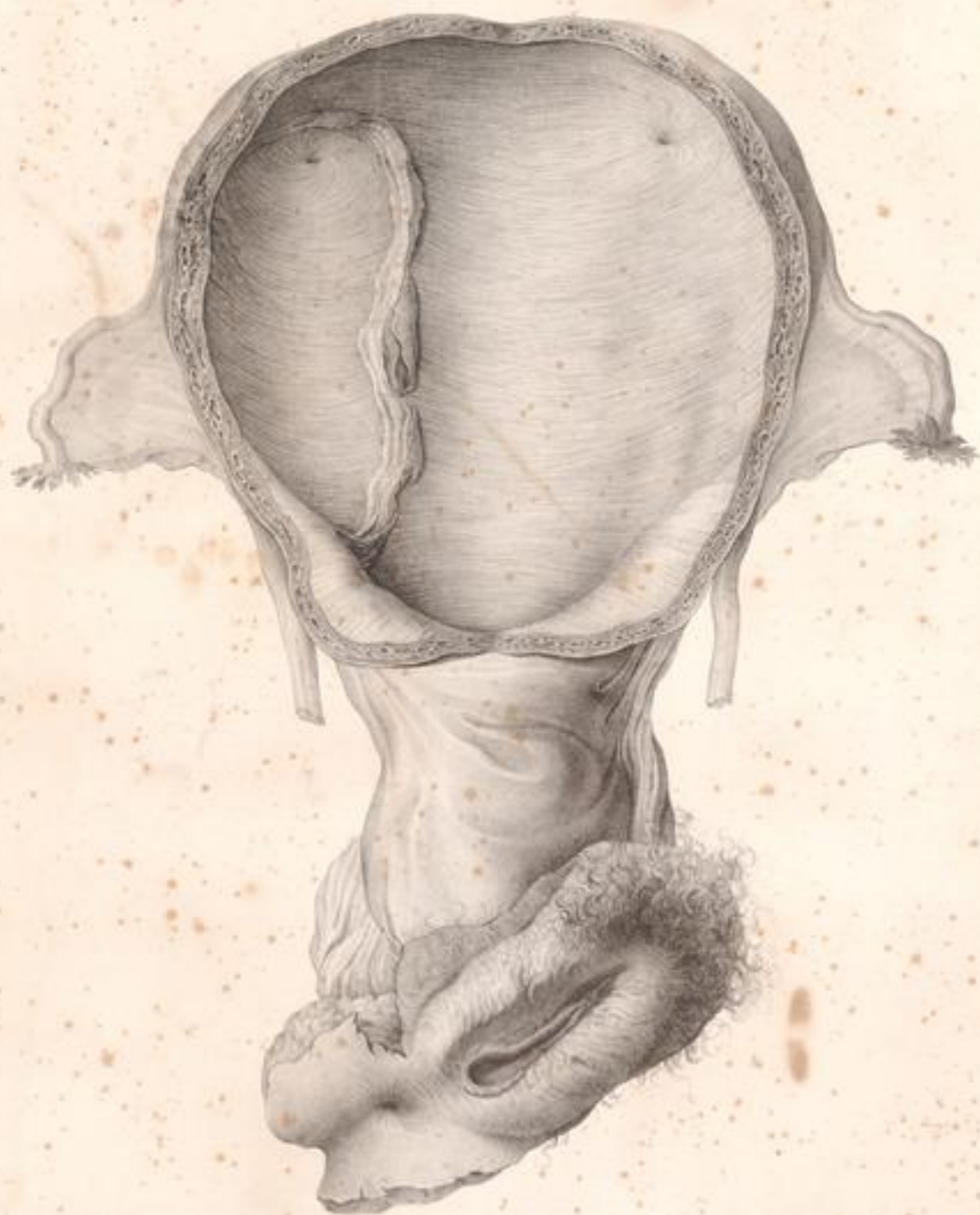




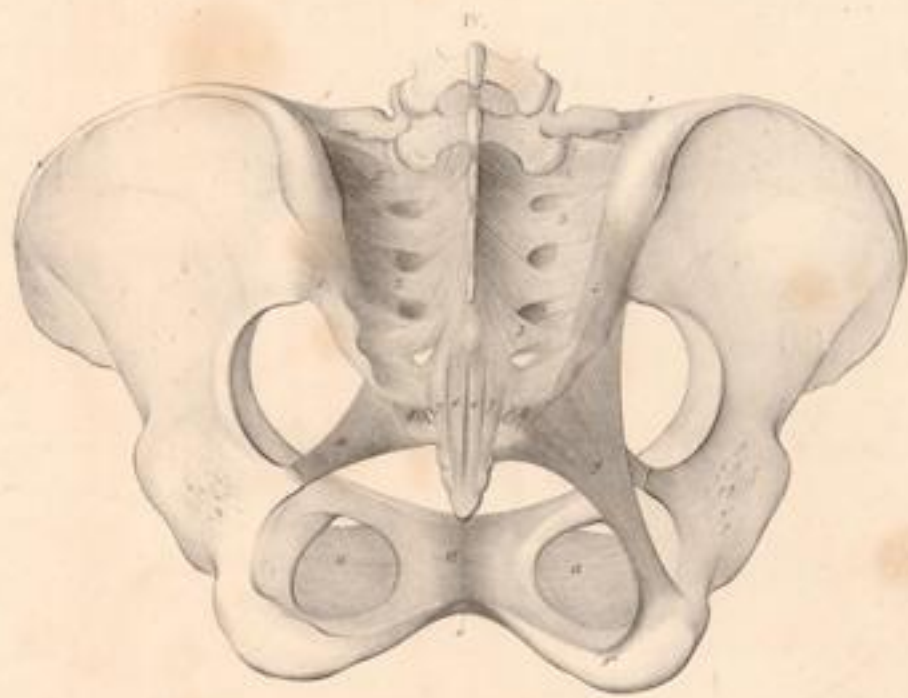
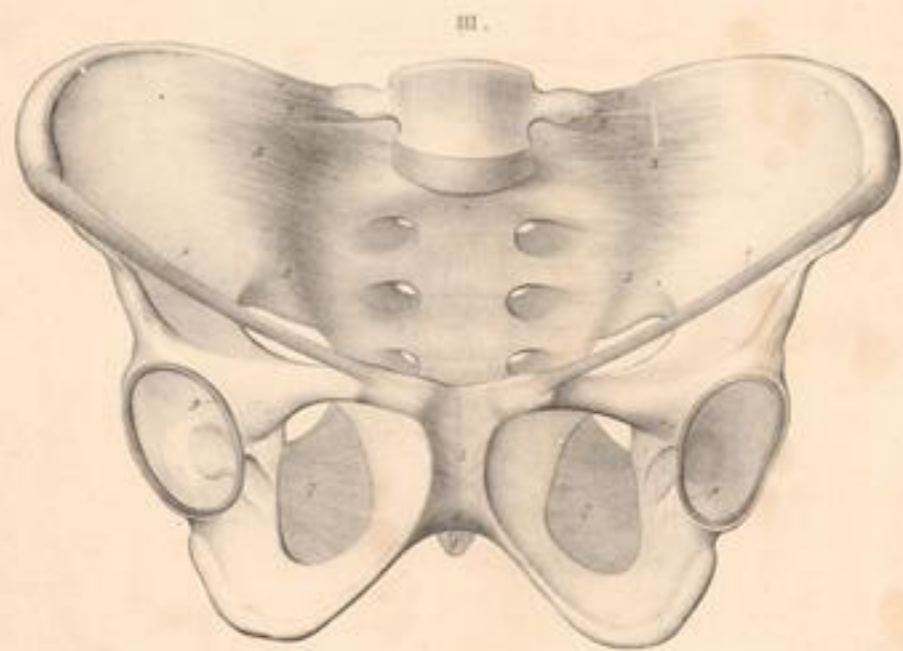
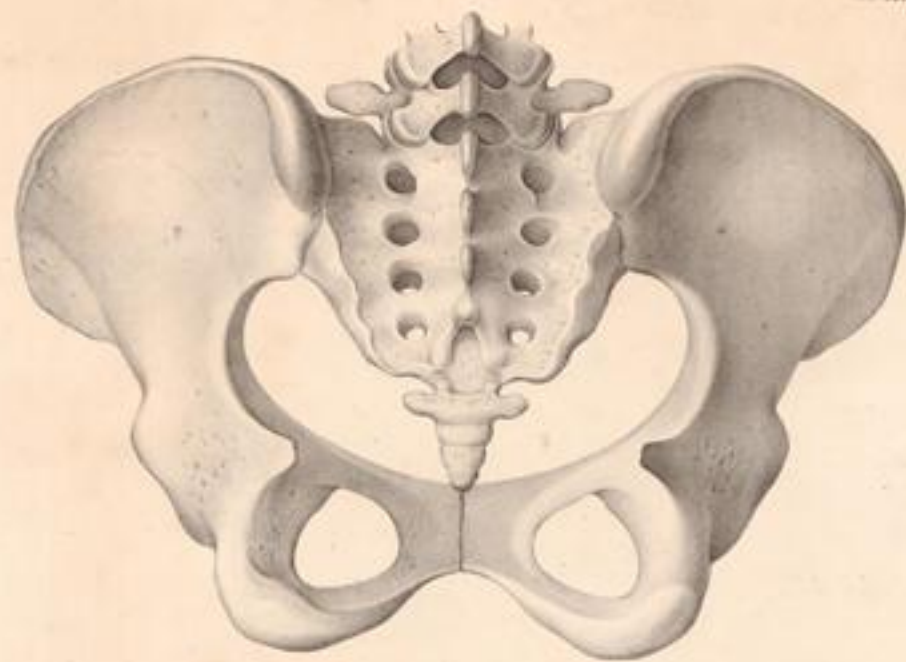
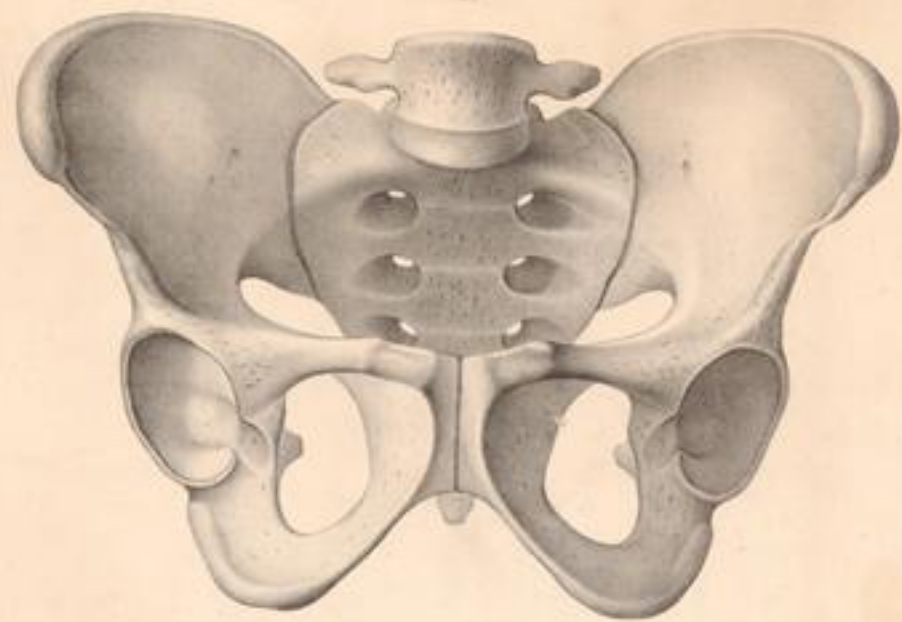


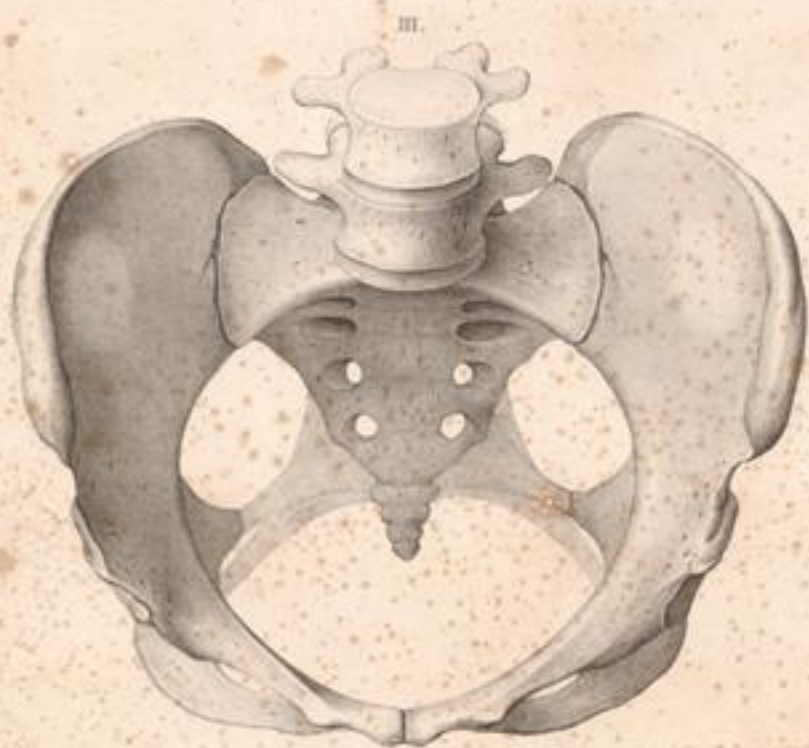


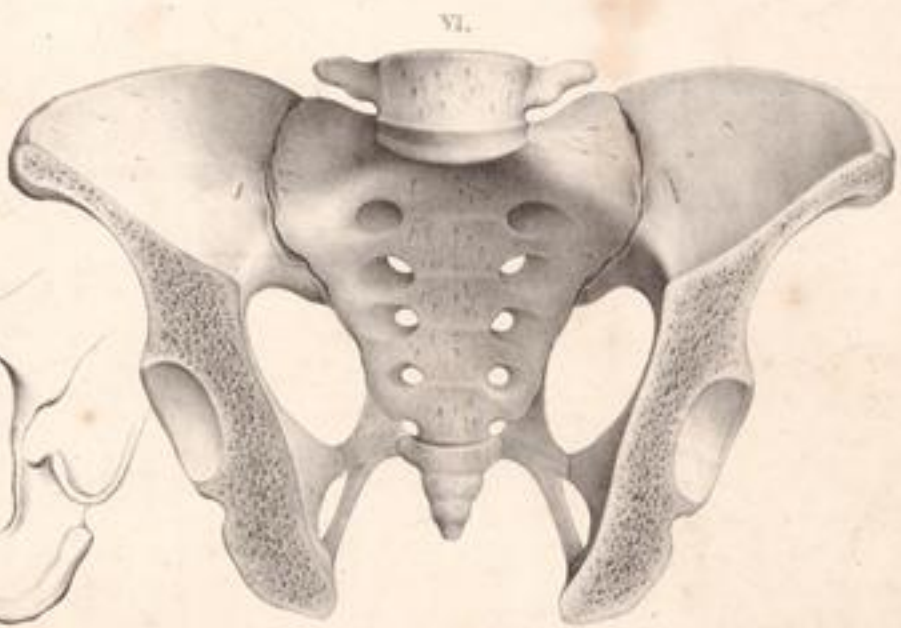
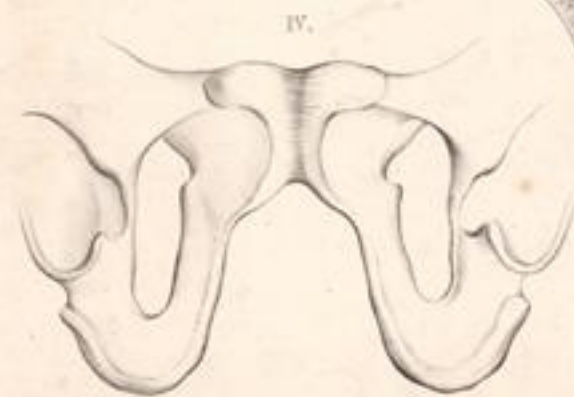
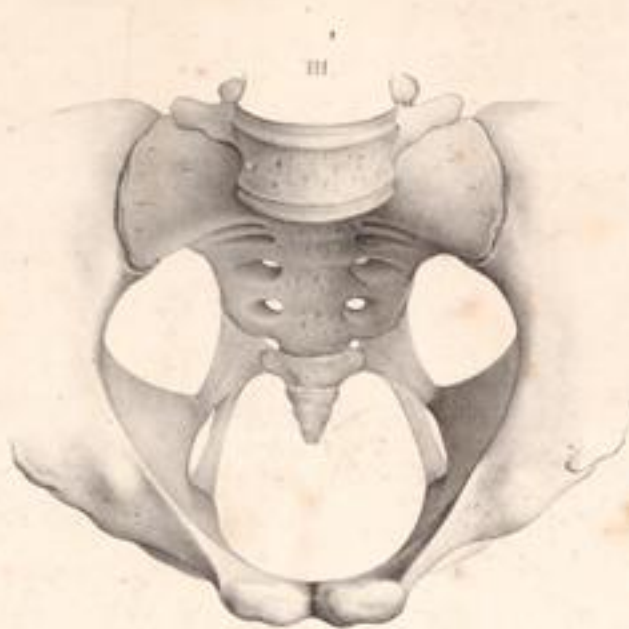


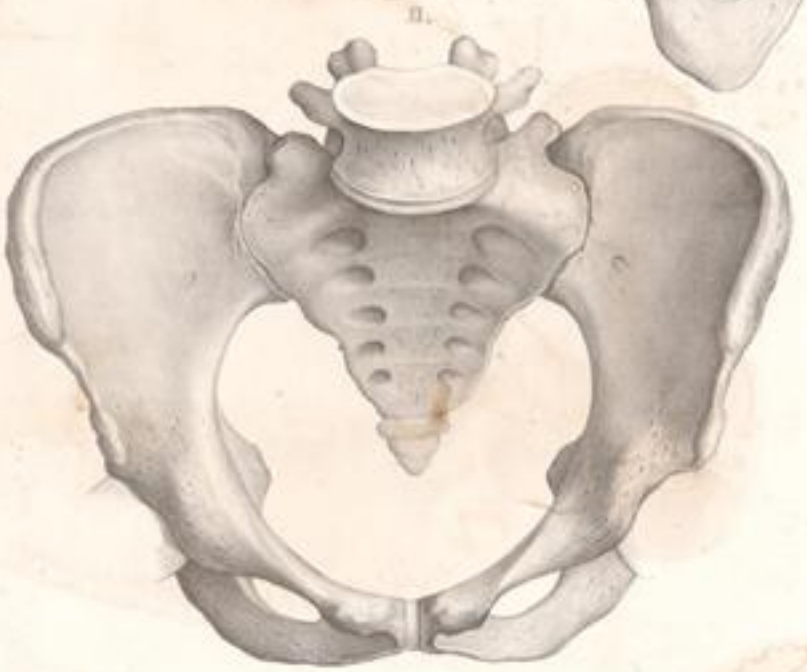




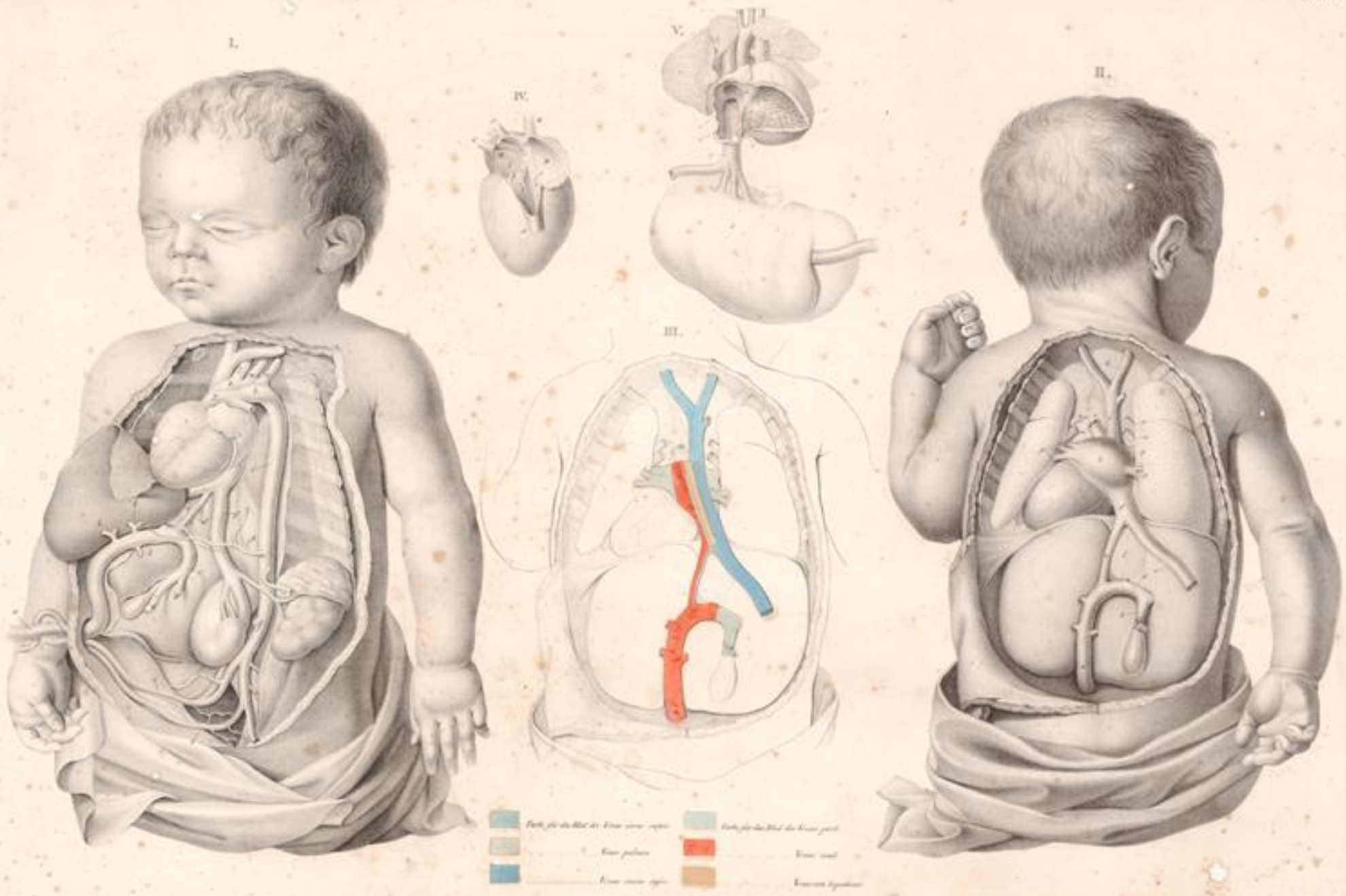


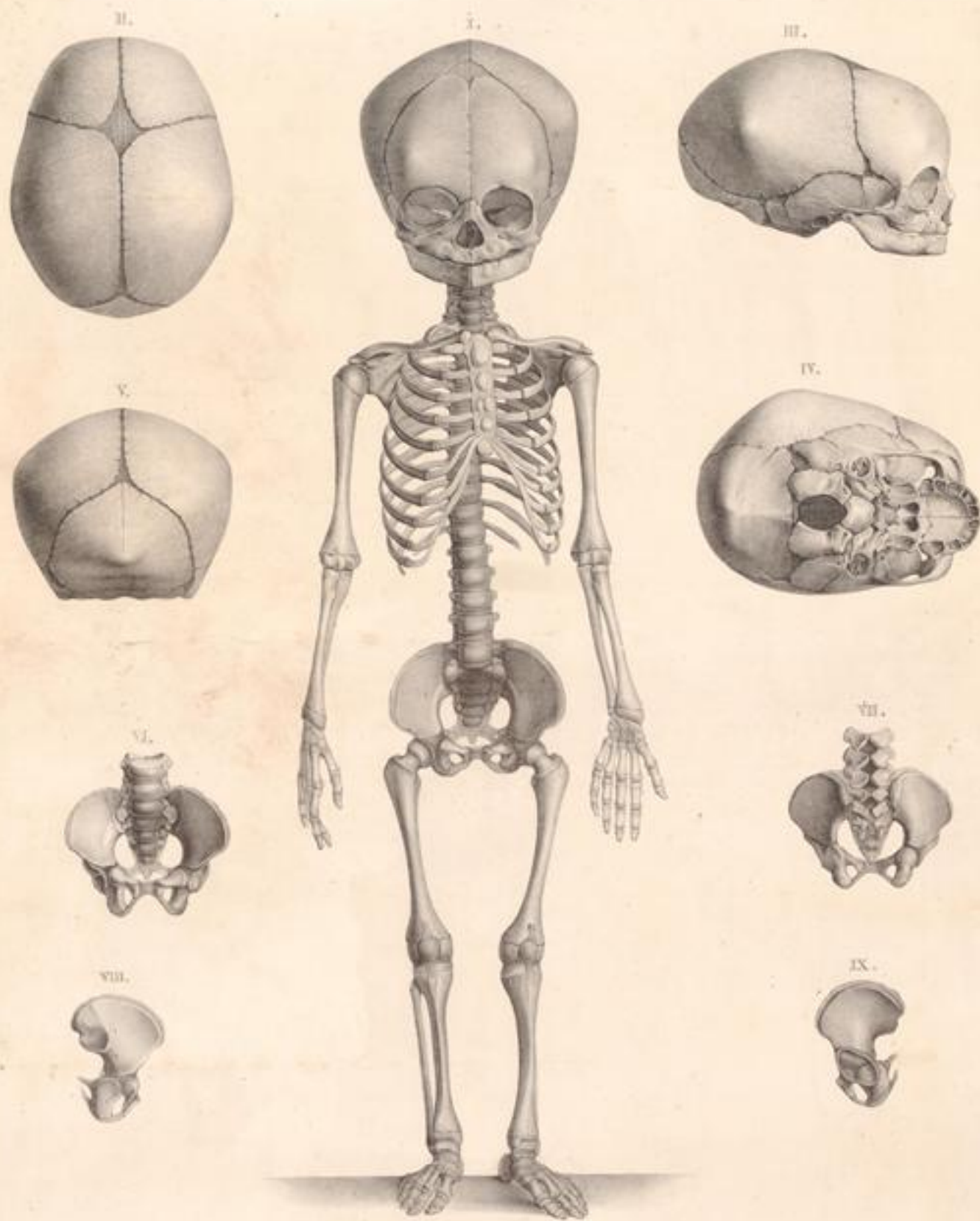


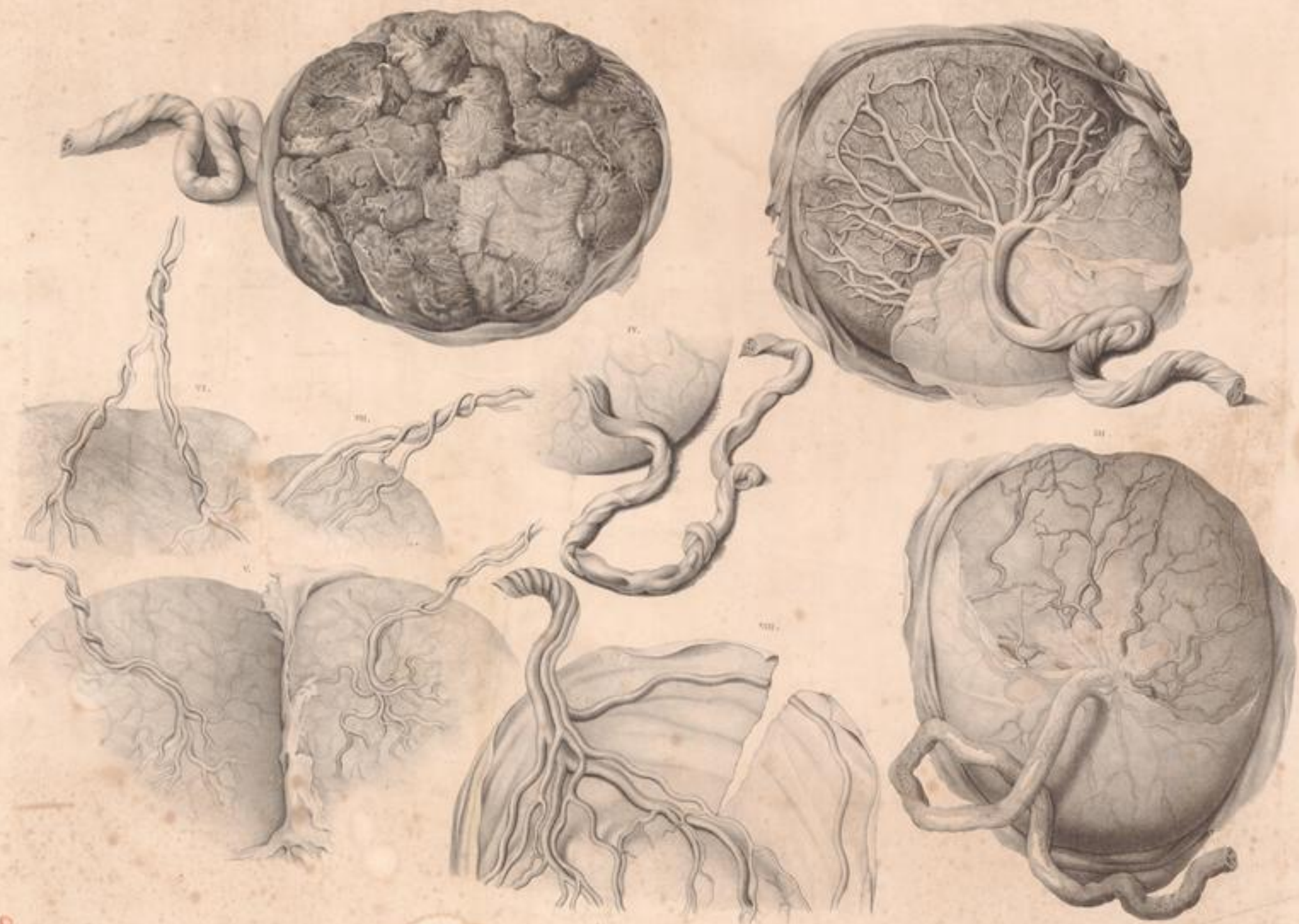


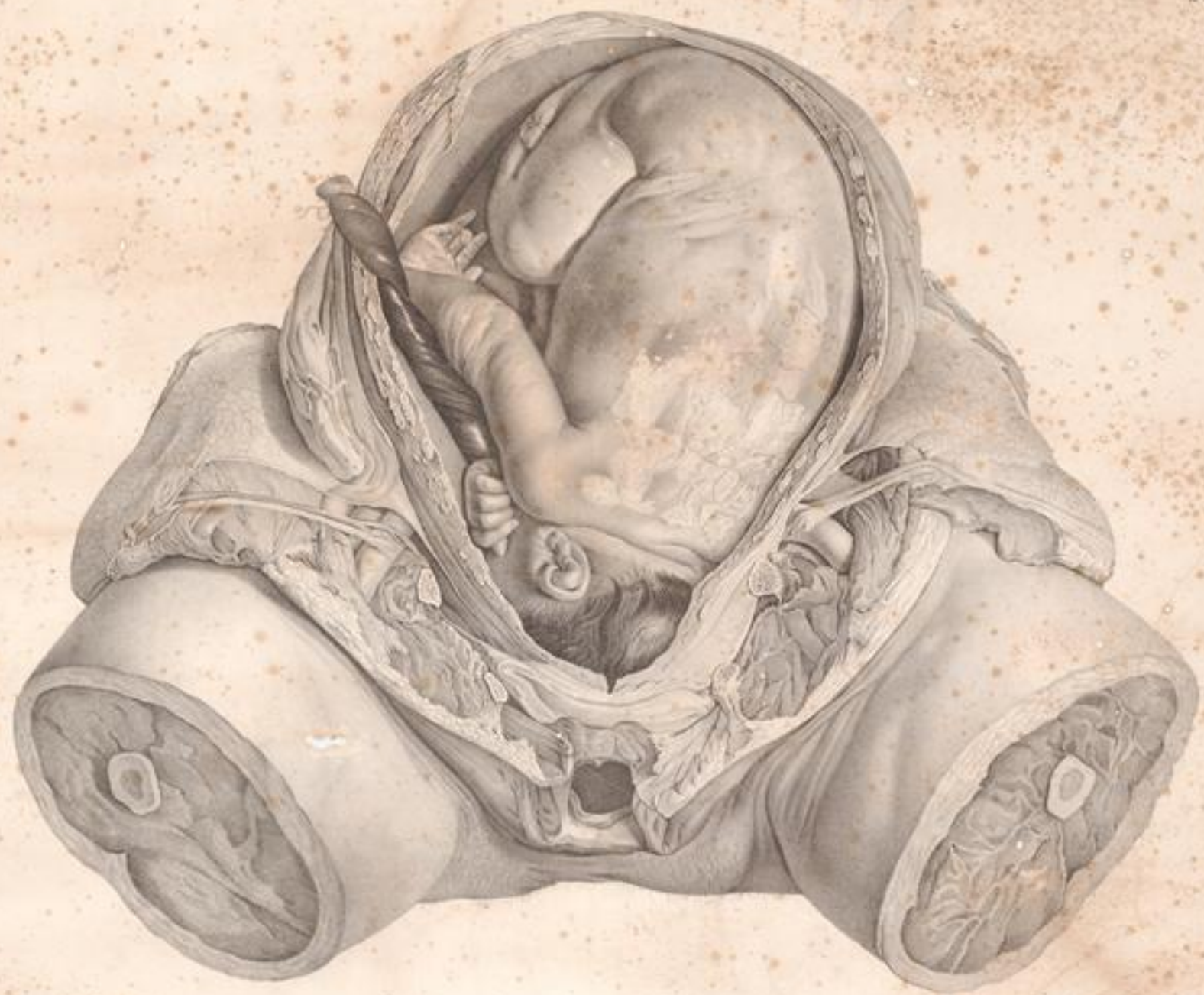










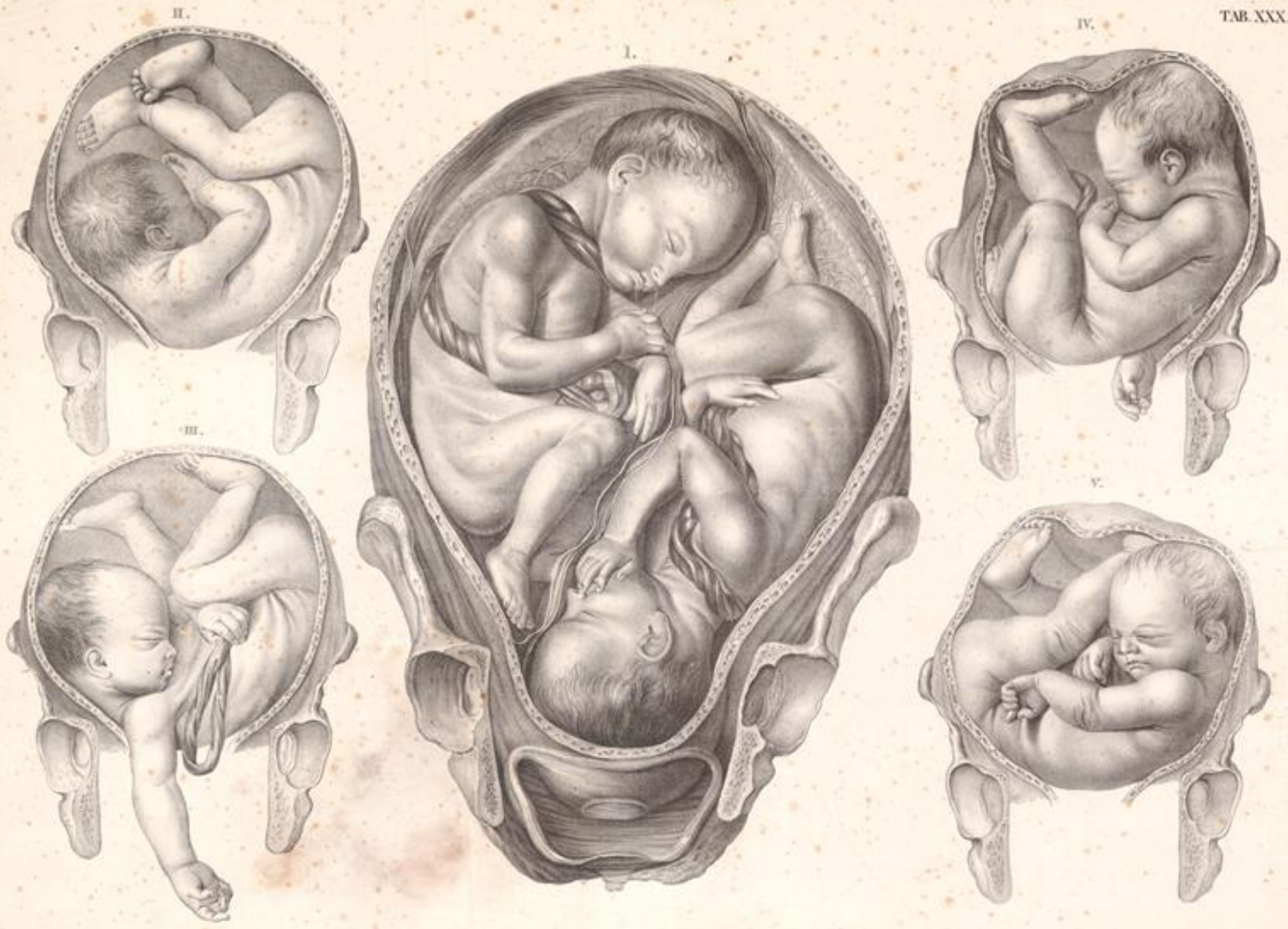


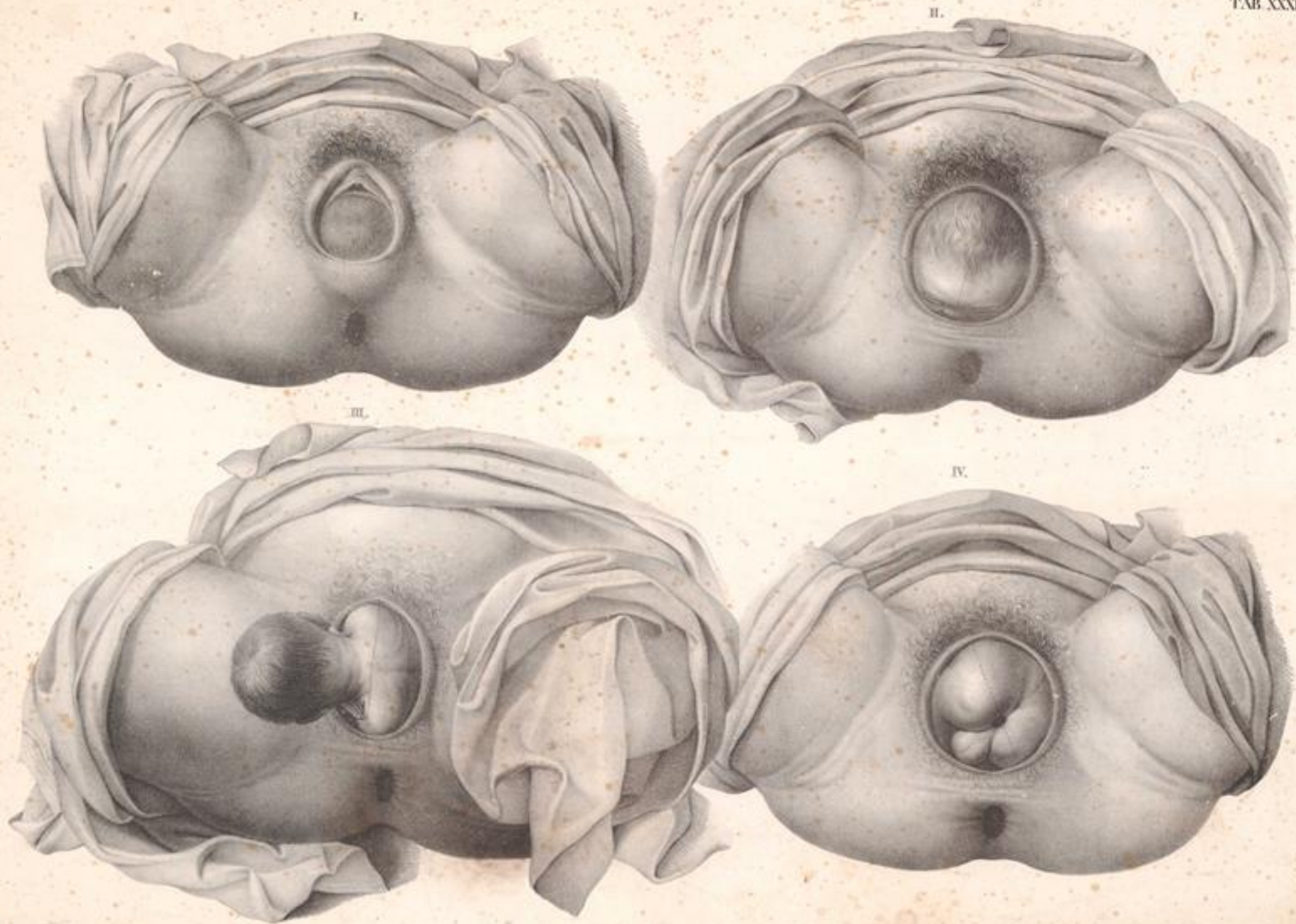




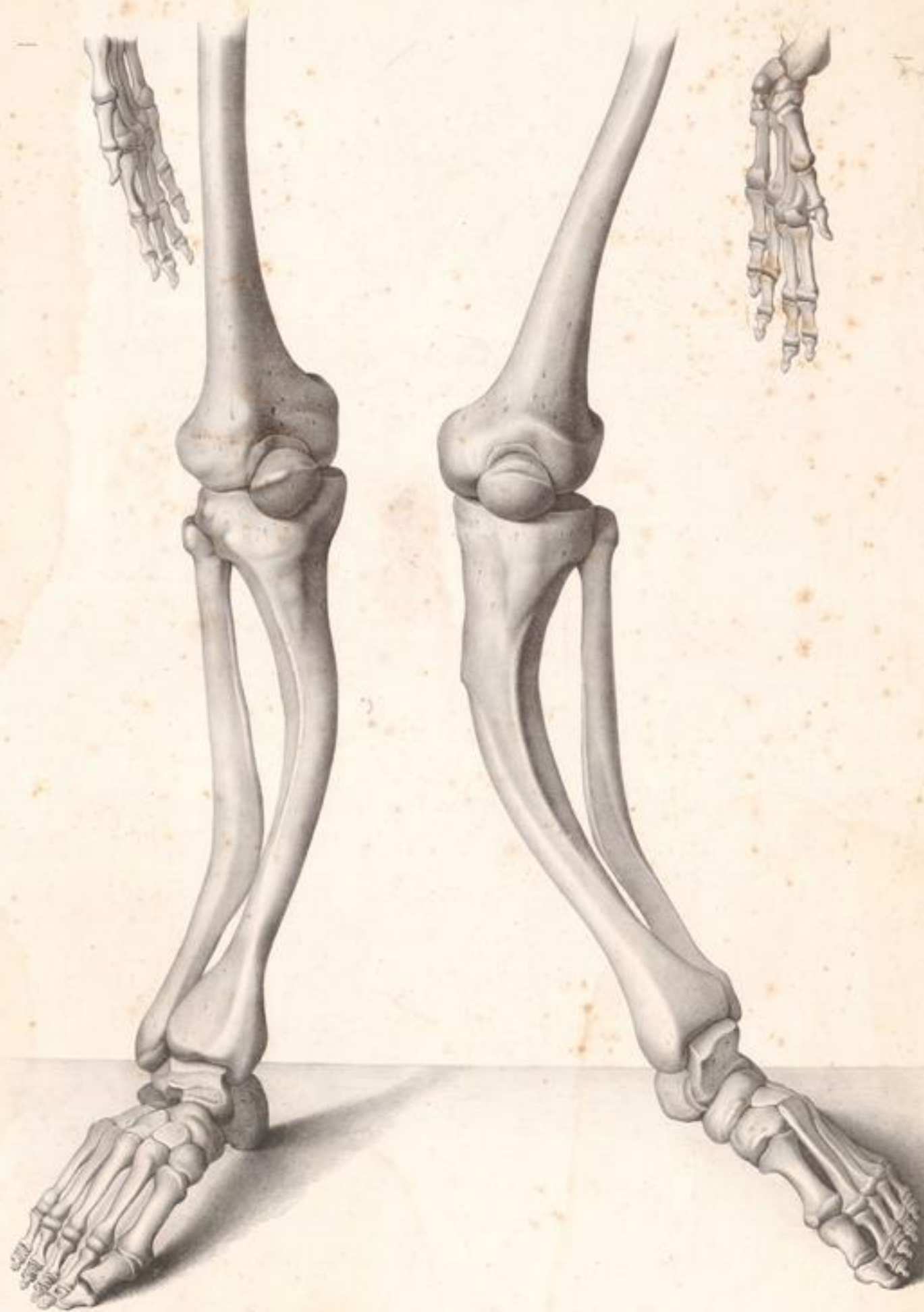
II.





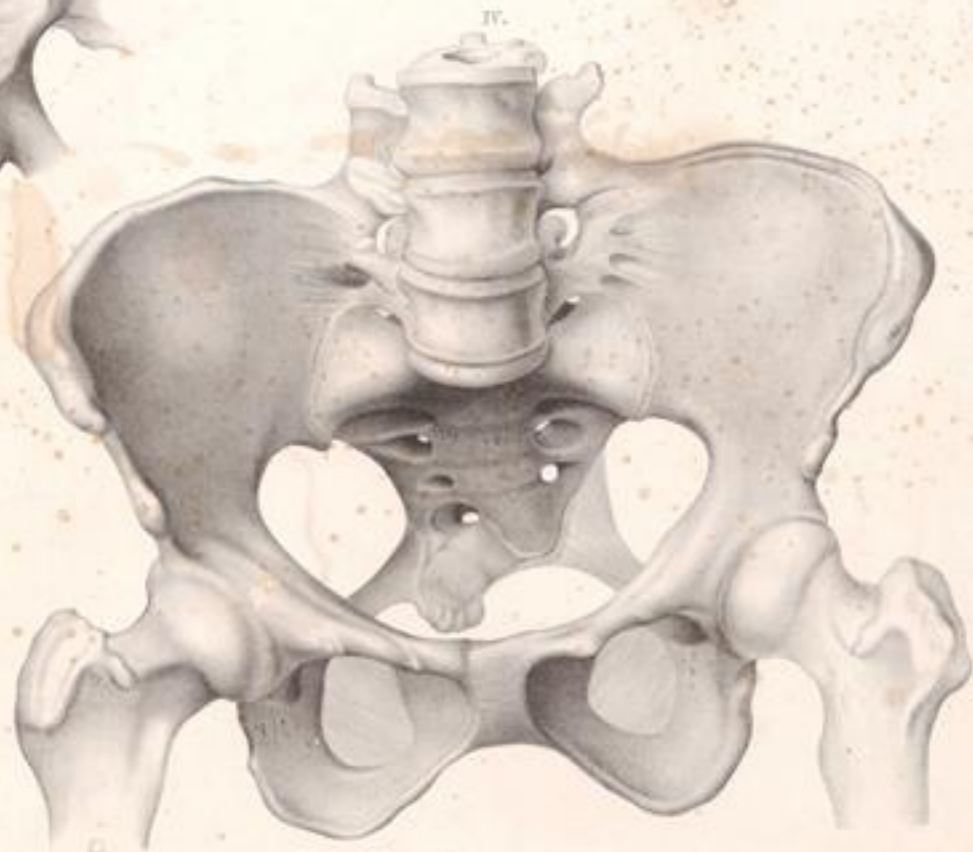
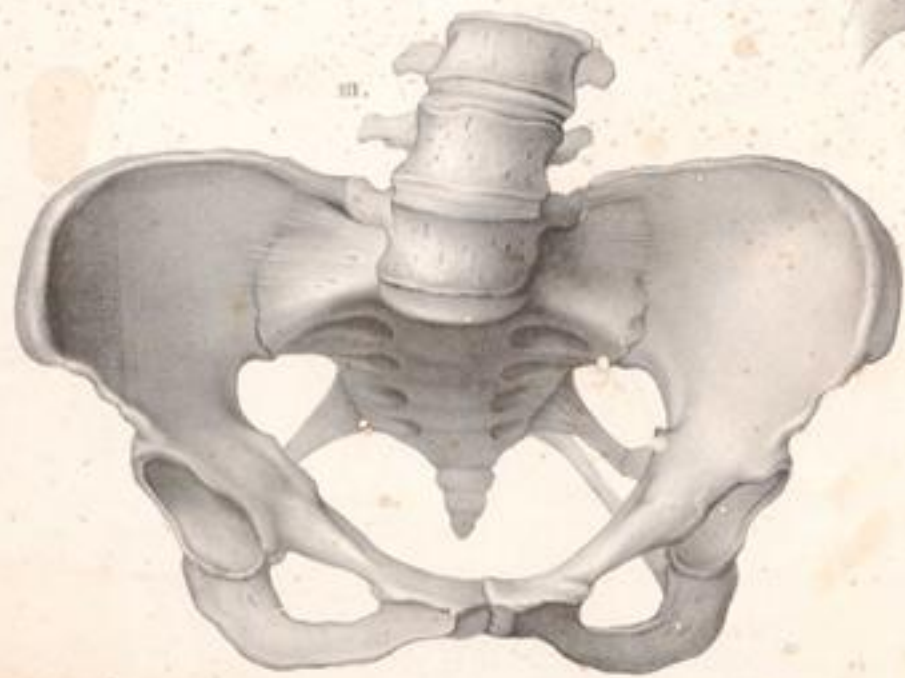


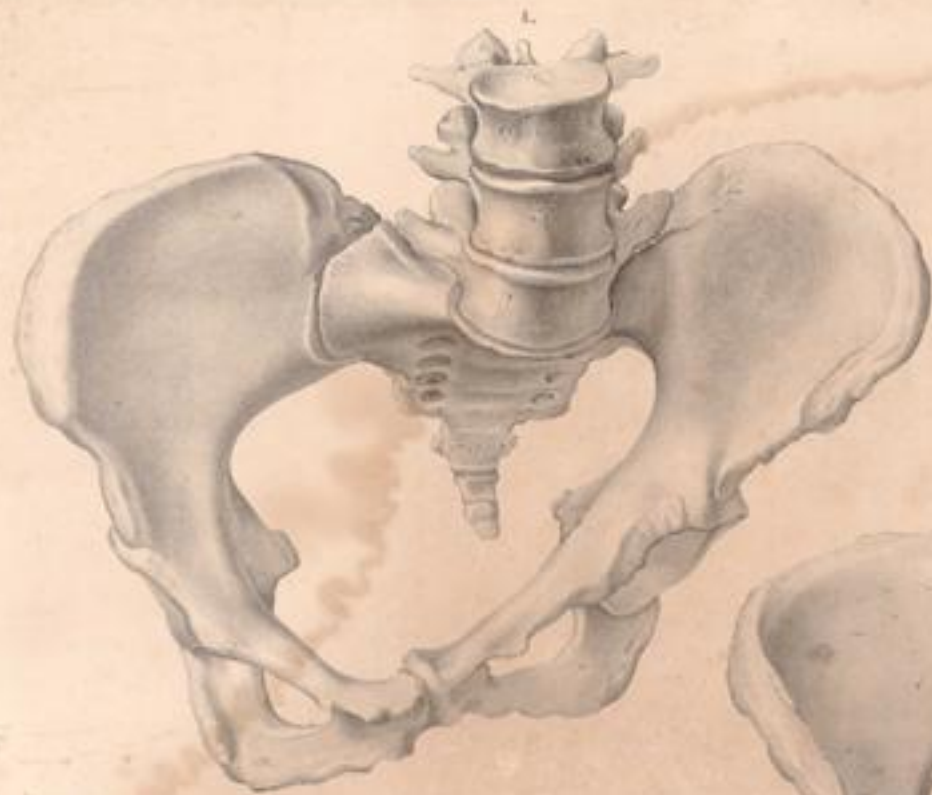












I.



II.



III.



IV.



V.



VII.



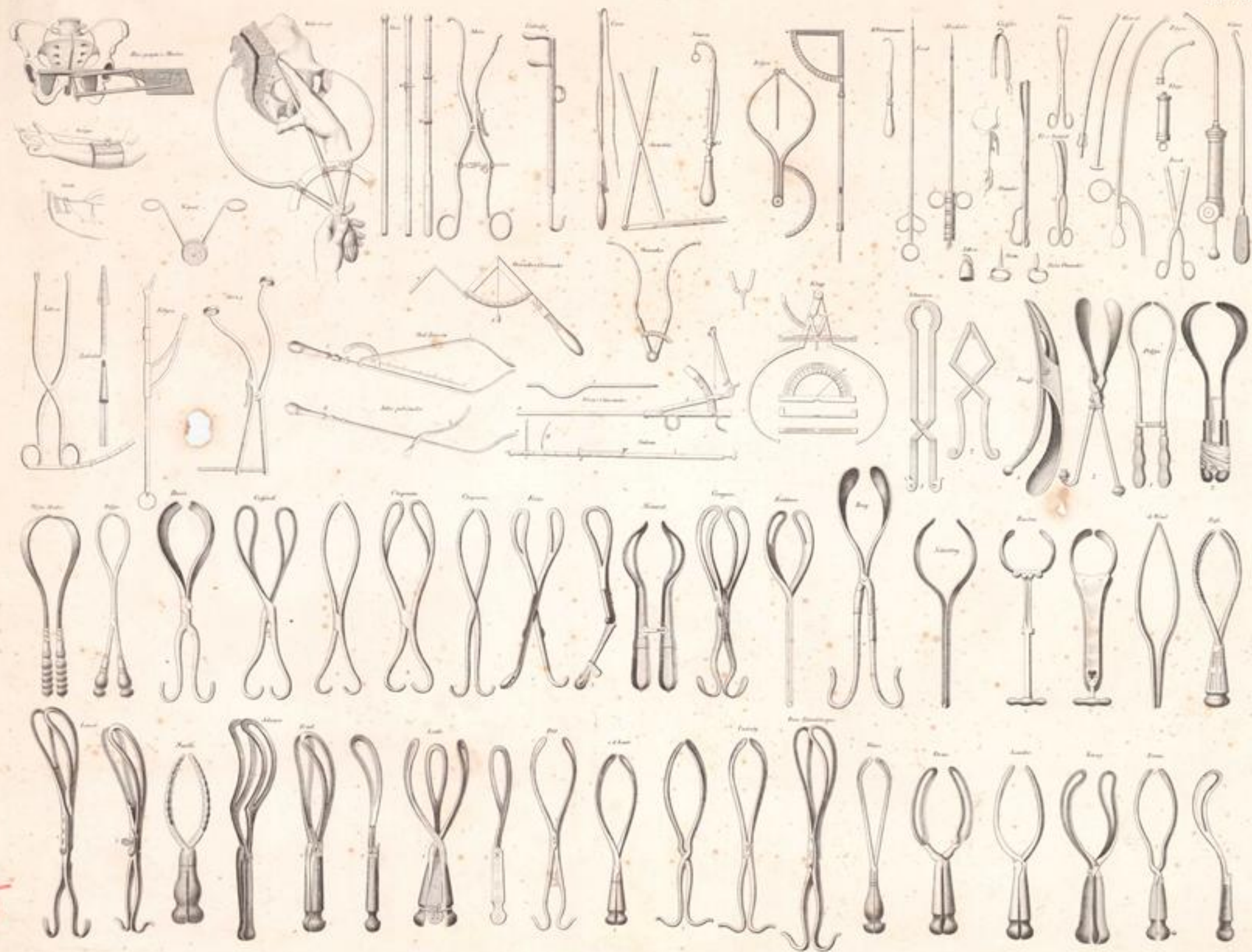
VI.



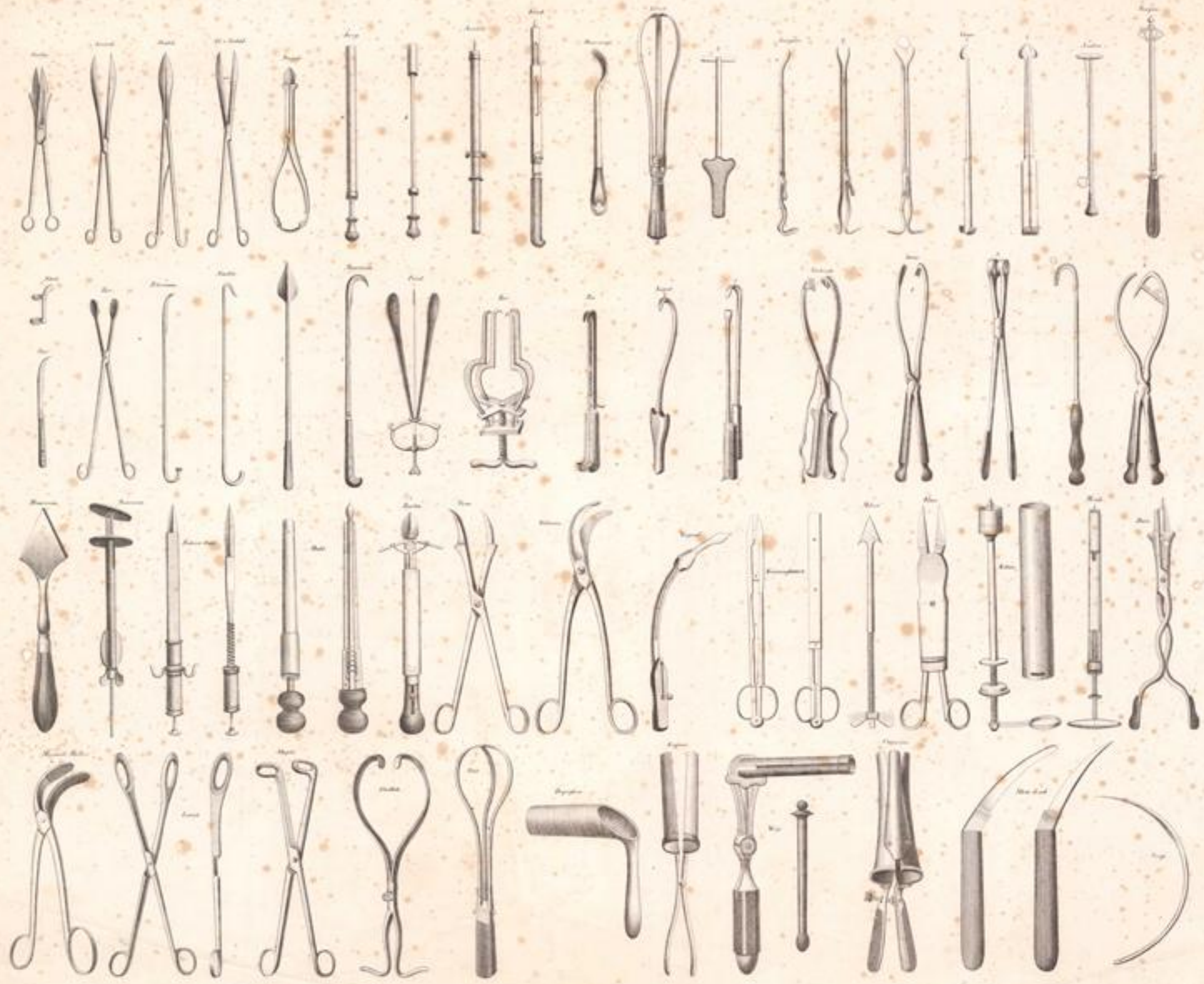
VII.

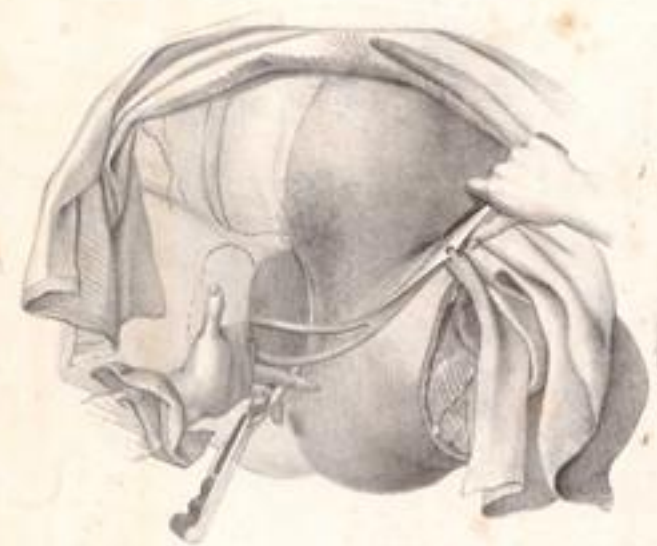
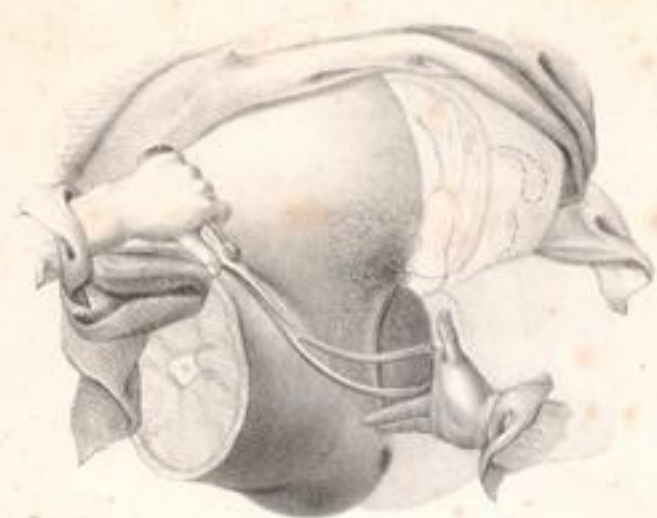


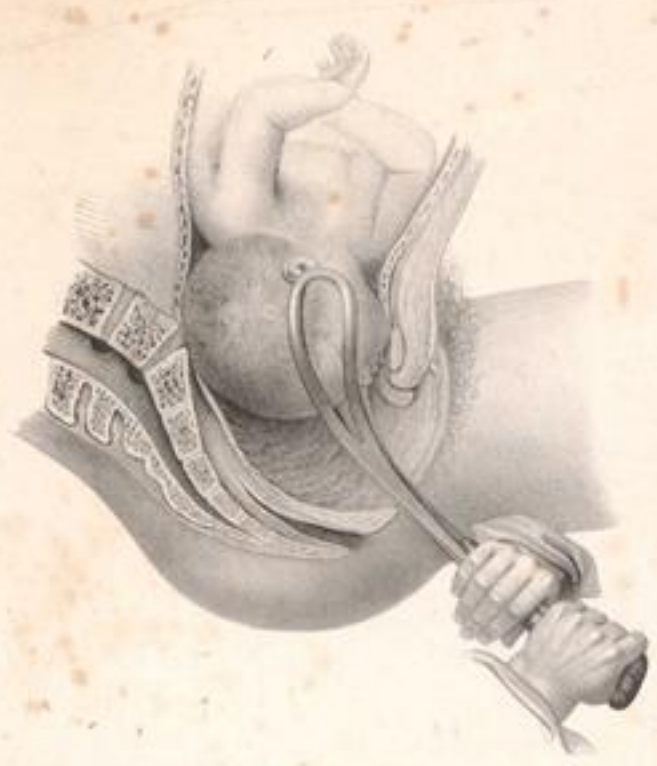


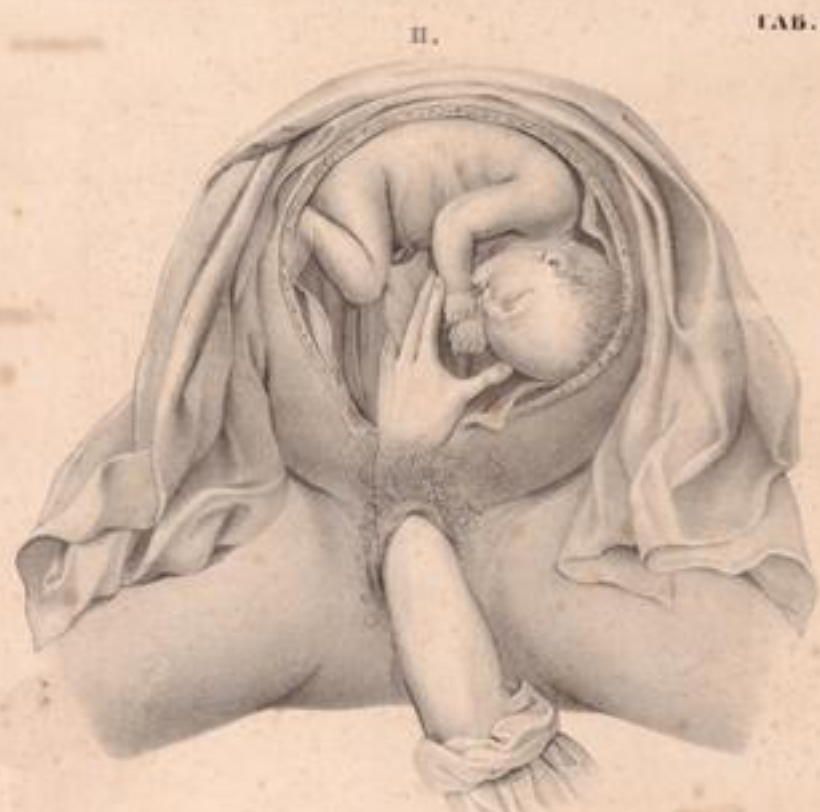








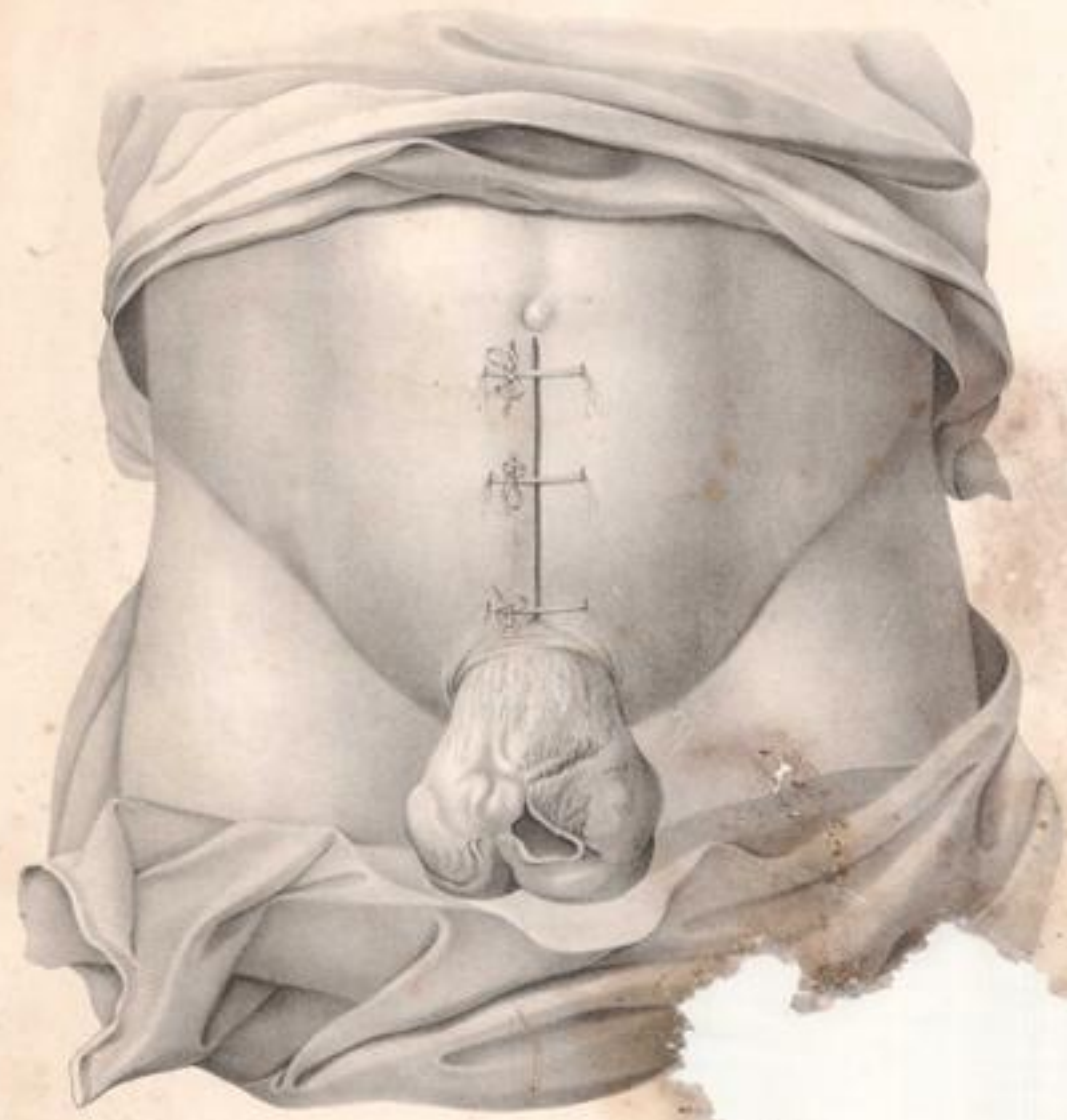




I.



II.



42